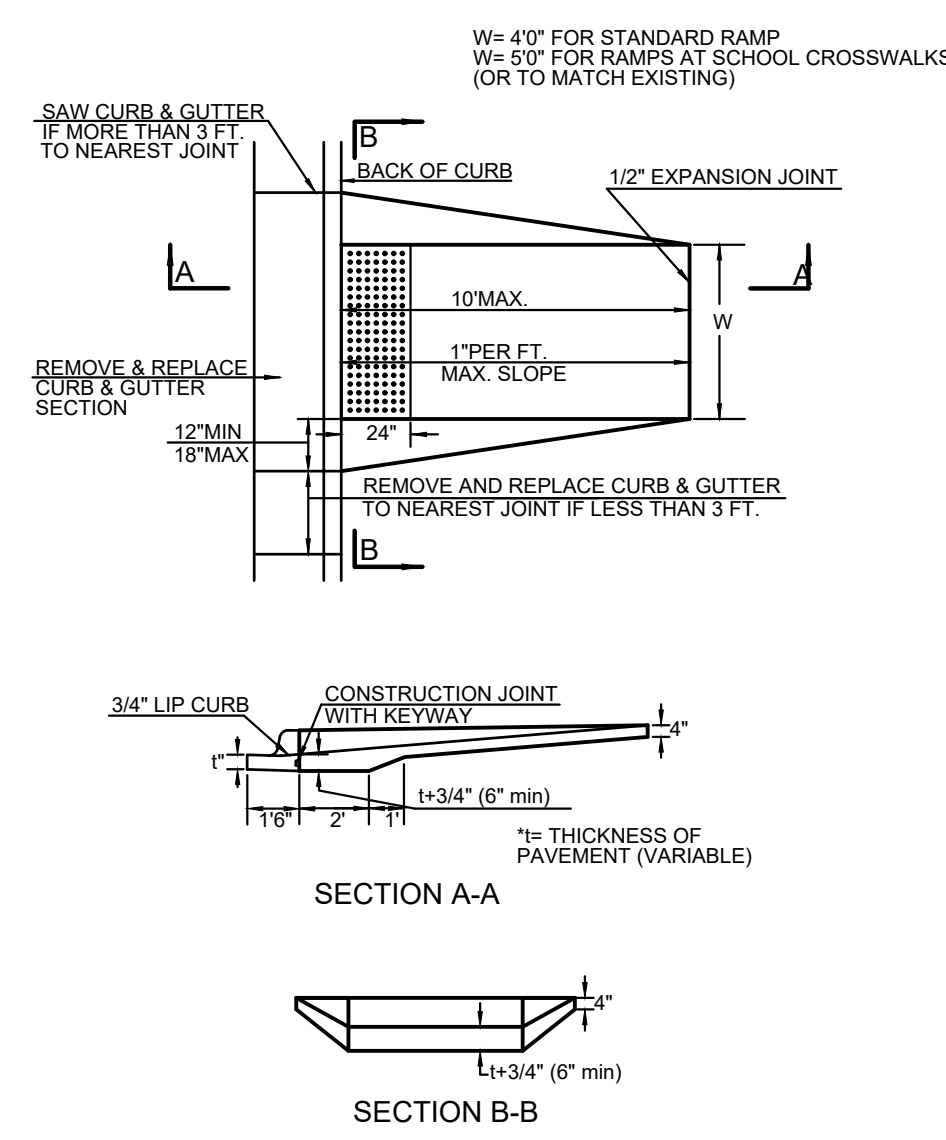
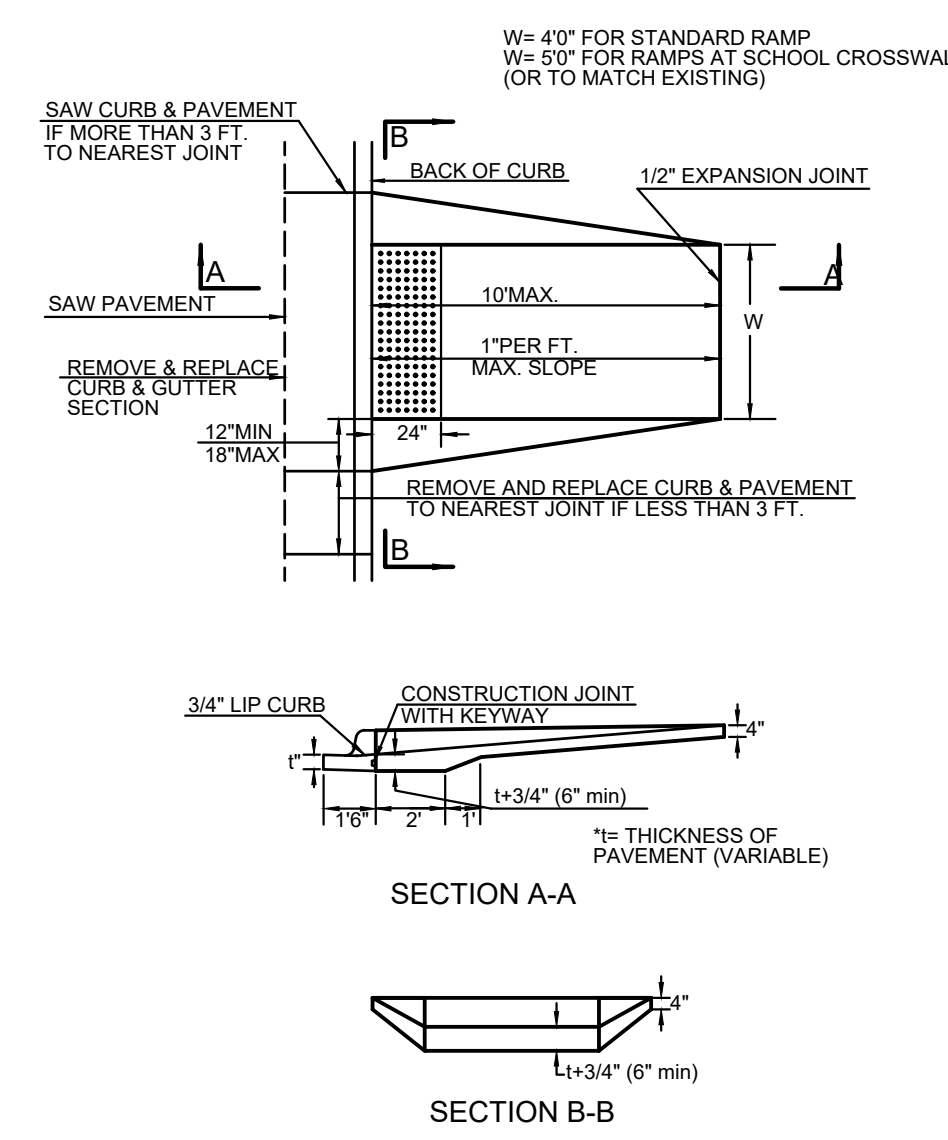


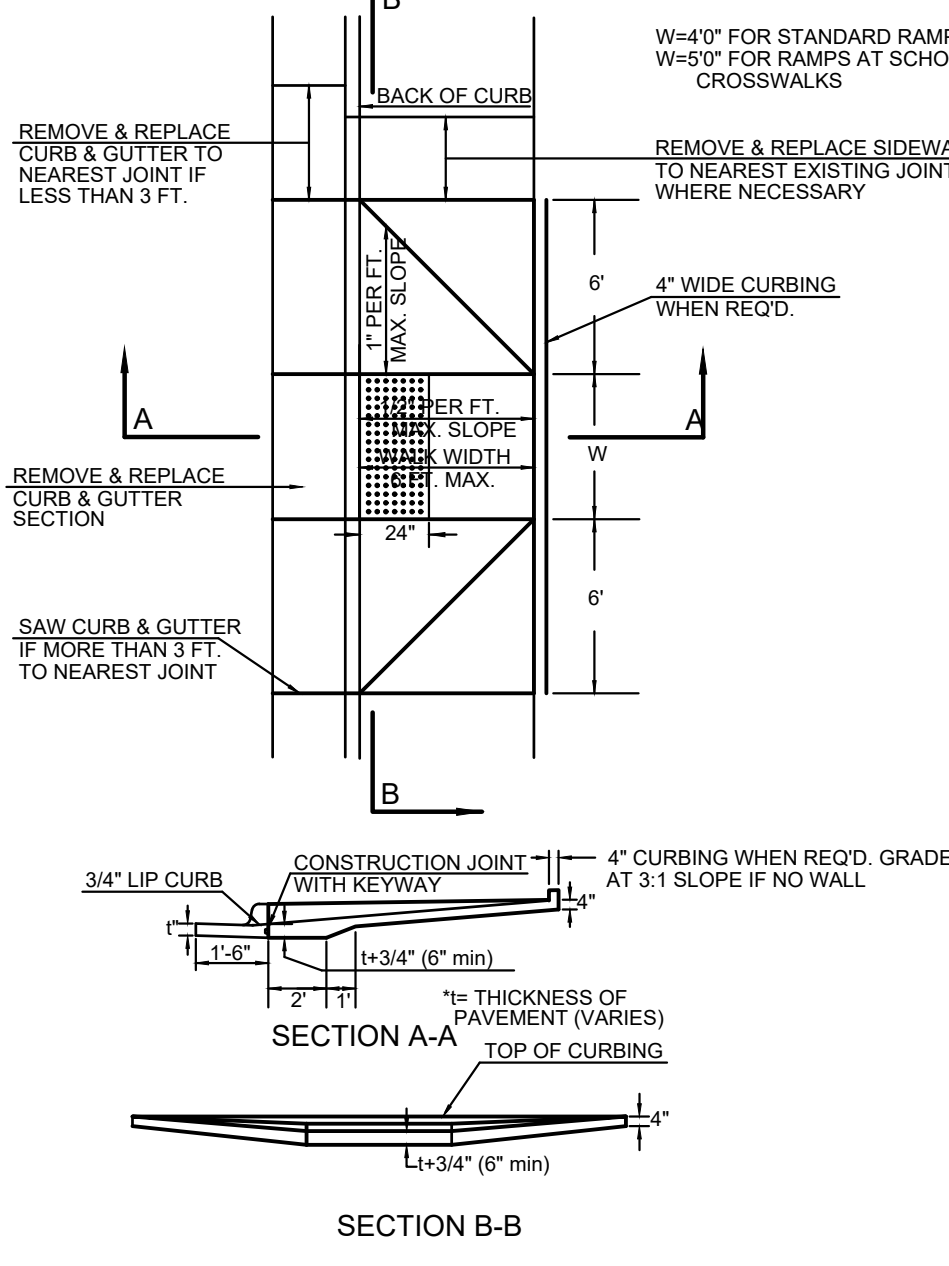
STANDARD WHEELCHAIR RAMP CONSTRUCTION DETAIL FOR STREETS WITH COMBINED CURB & GUTTER (TYPE A)



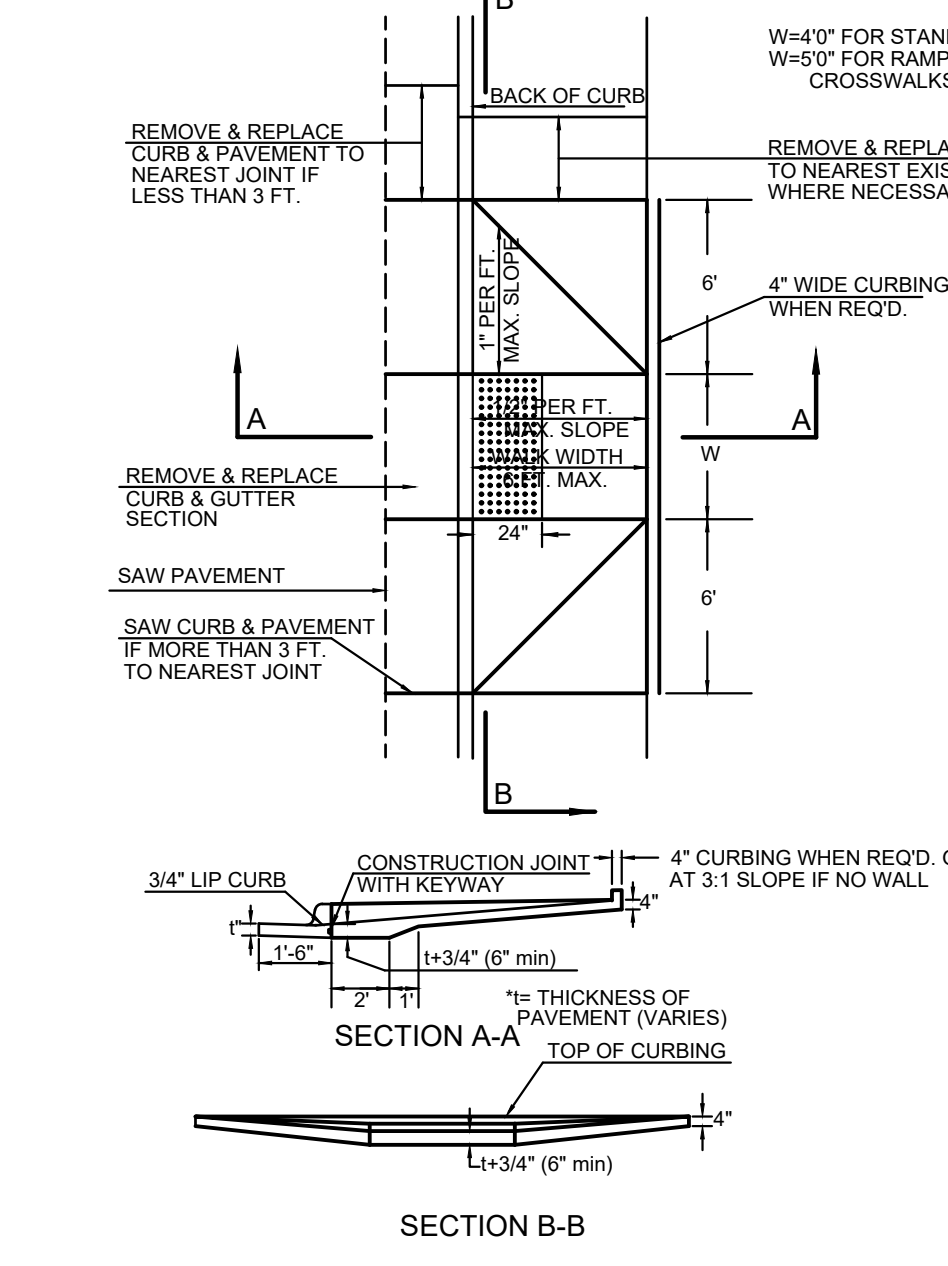
STANDARD WHEELCHAIR RAMP CONSTRUCTION DETAIL FOR CONCRETE STREETS WITH MONOLITHIC CURB (TYPE A)



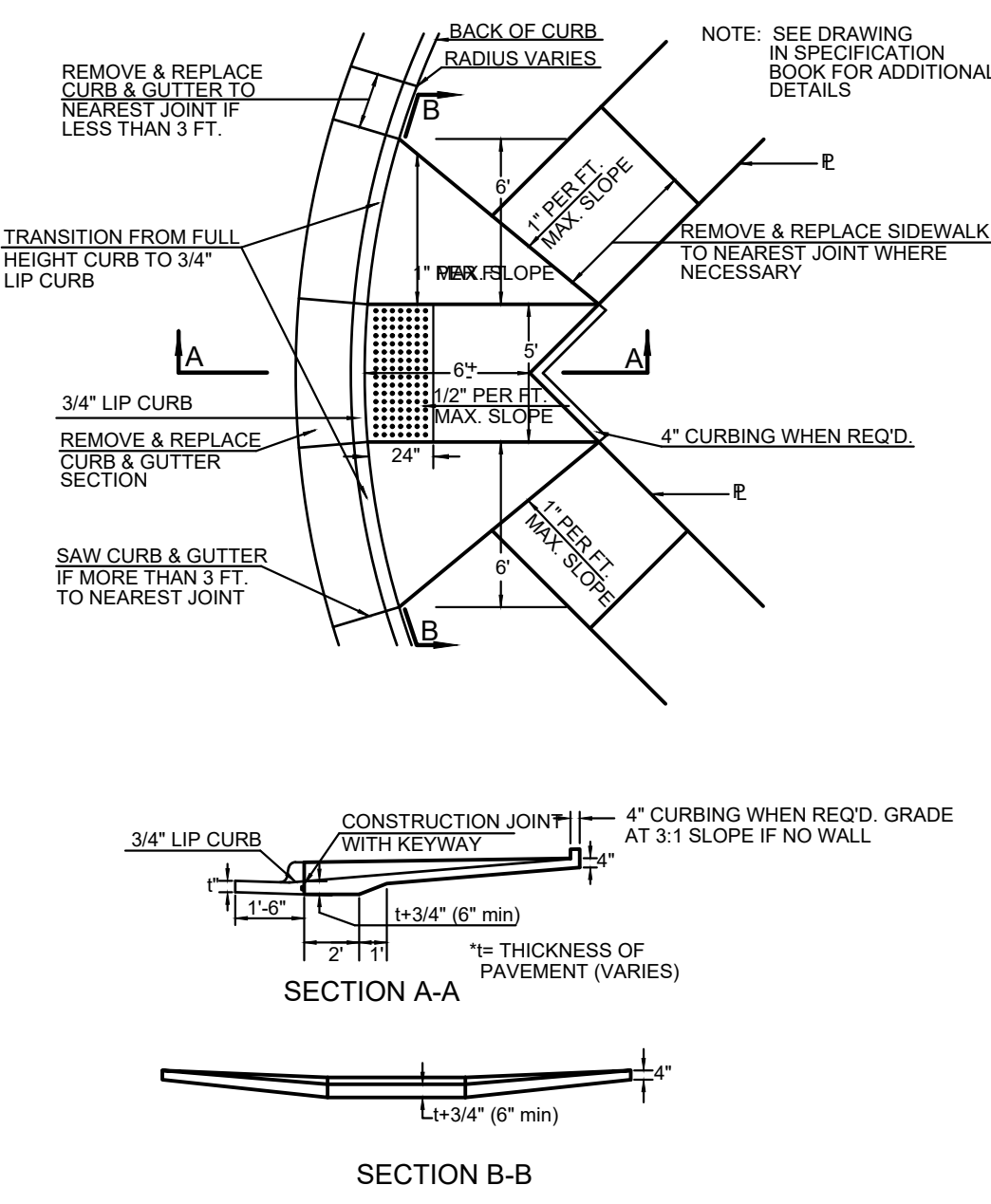
STANDARD WHEELCHAIR RAMP CONSTRUCTION DETAIL FOR STREETS WITH COMBINED CURB & GUTTER AND FULL WALK (TYPE B)



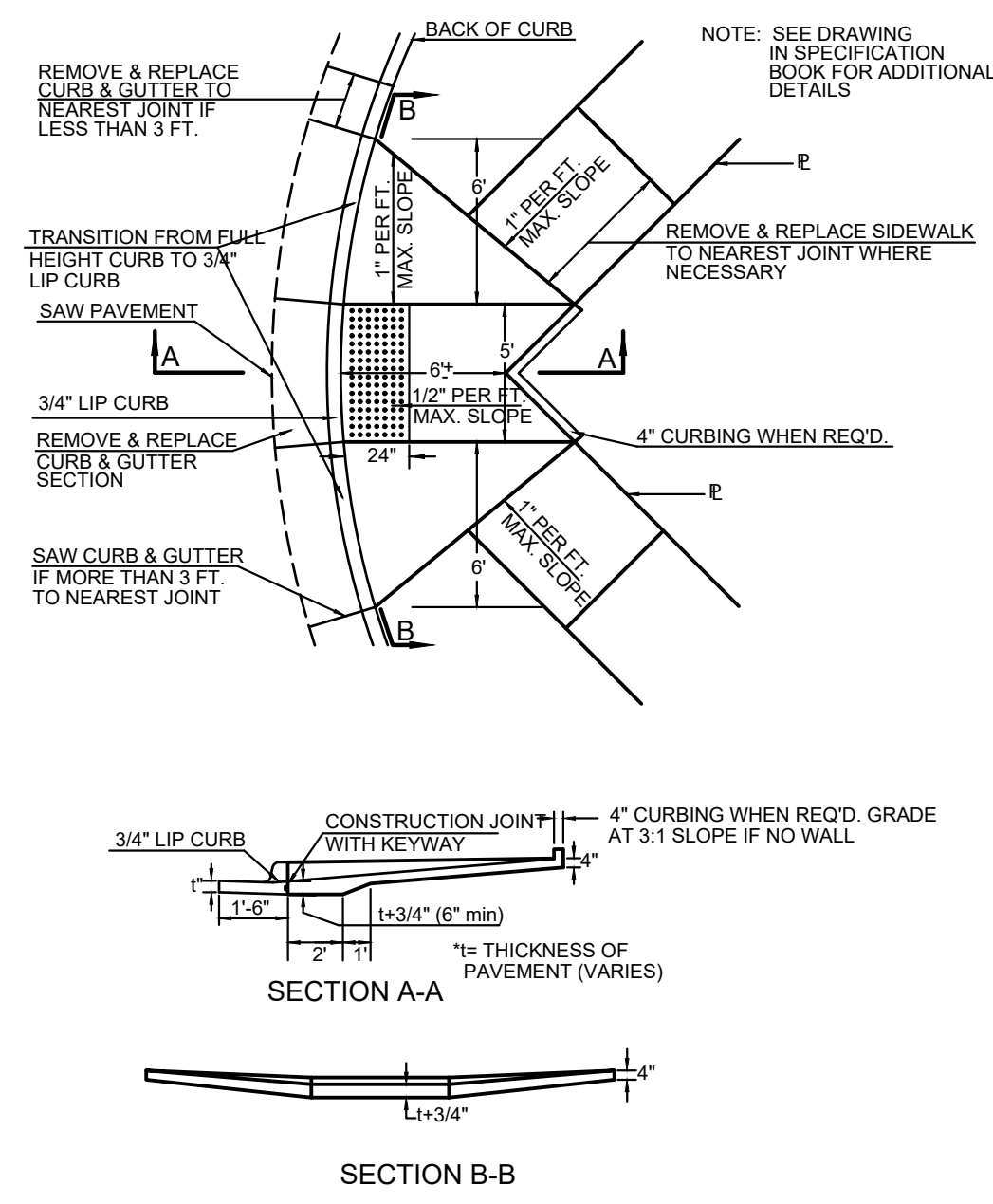
STANDARD WHEELCHAIR RAMP CONSTRUCTION DETAIL FOR STREETS WITH MONOLITHIC CURB AND FULL WALK (TYPE B)



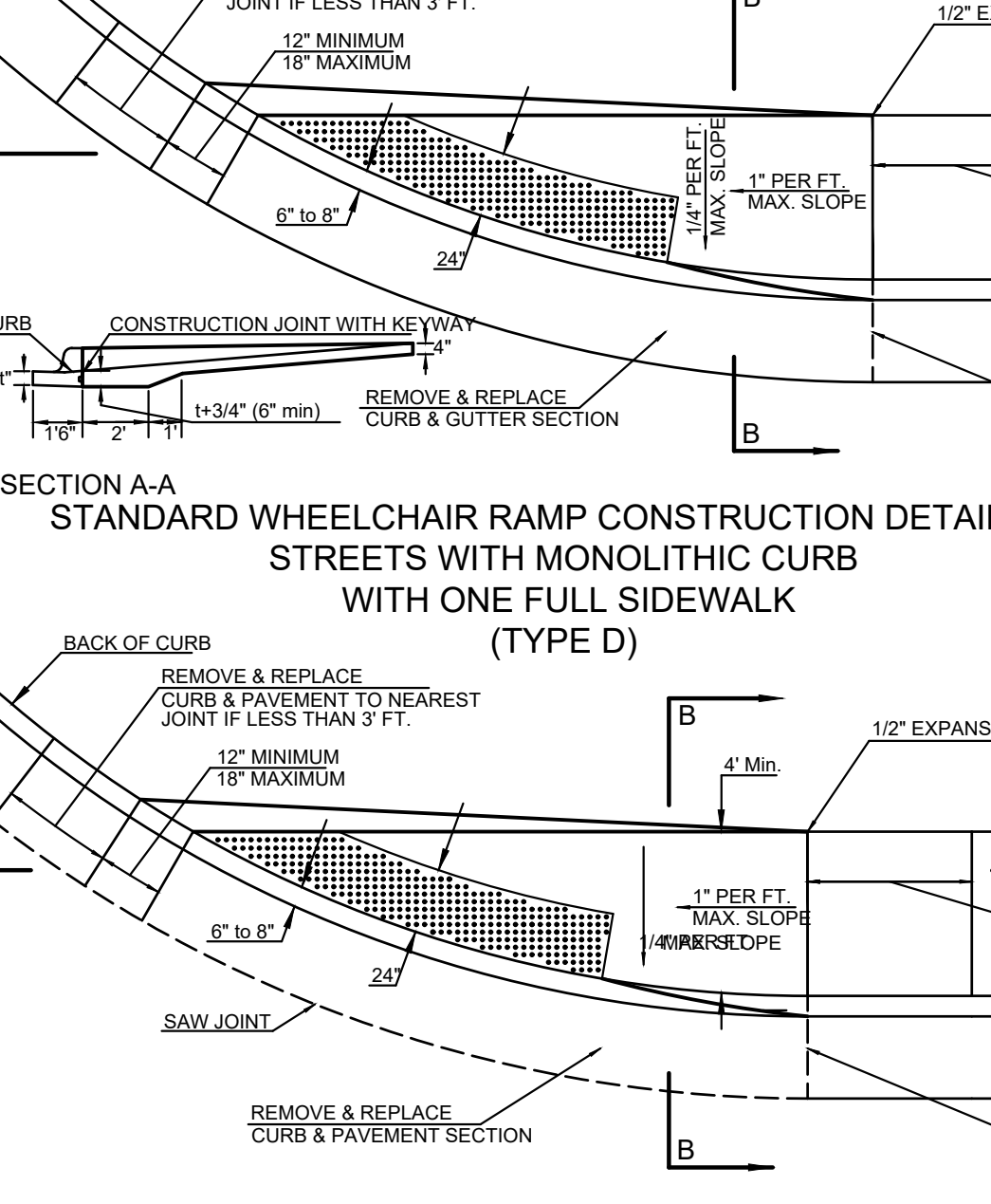
STANDARD WHEELCHAIR RAMP CONSTRUCTION DETAIL FOR STREET WITH COMBINED CURB AND GUTTER ON RADIUS WITH 6\"/>



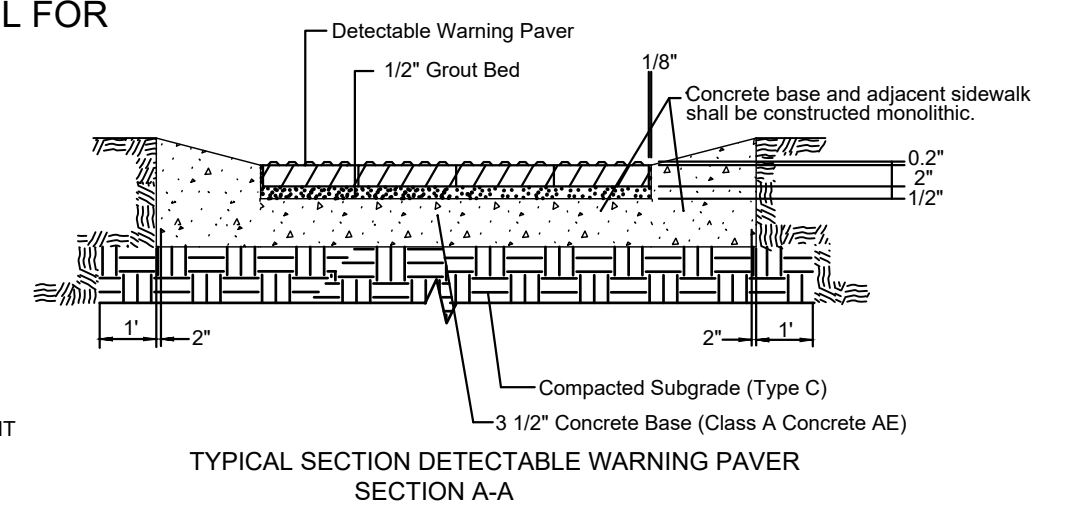
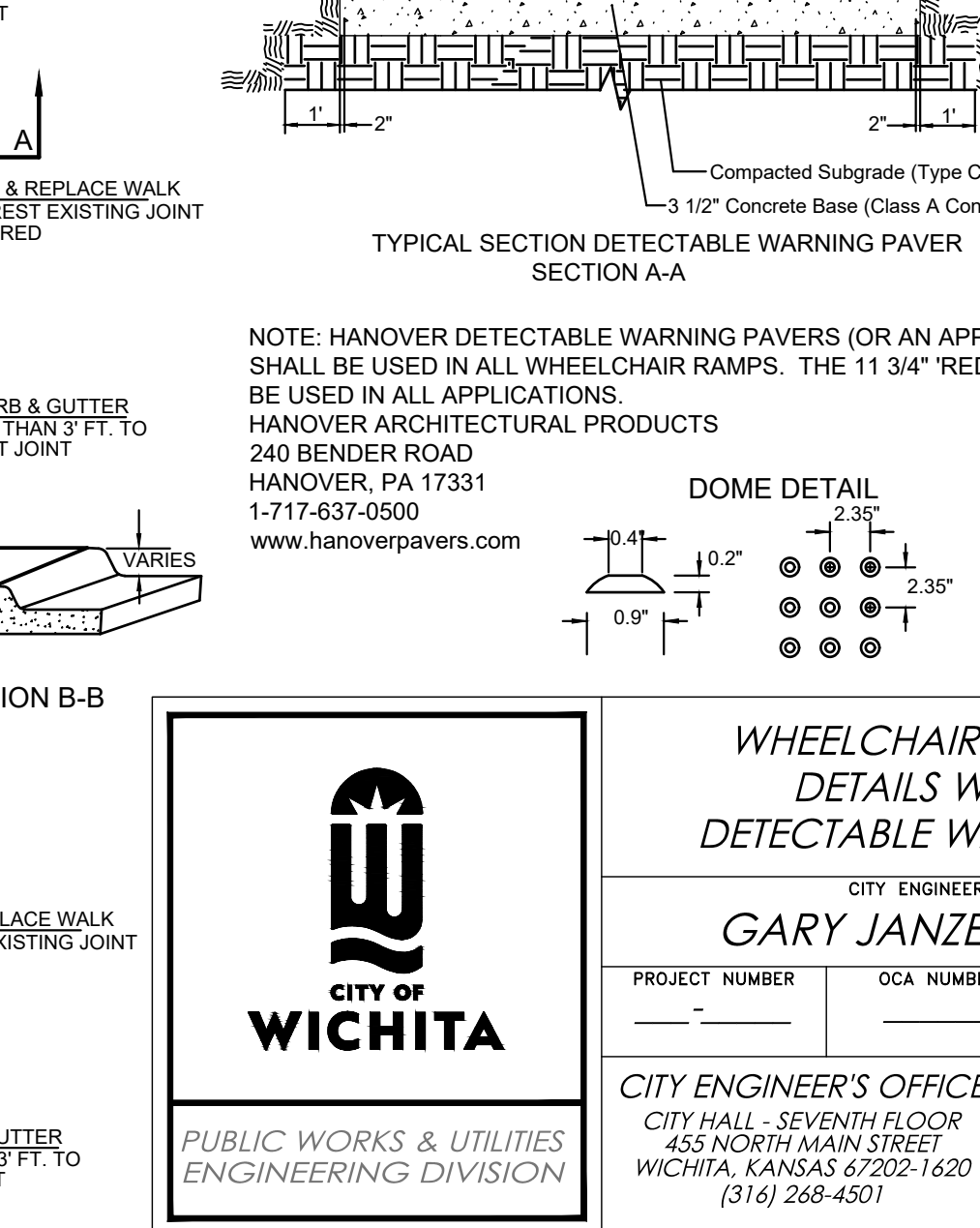
STANDARD WHEELCHAIR RAMP CONSTRUCTION DETAIL FOR STREET WITH MONOLITHIC CURB ON RADIUS WITH 6\"/>



STANDARD WHEELCHAIR RAMP CONSTRUCTION DETAIL FOR STREETS WITH COMBINED CURB & GUTTER WITH ONE FULL SIDEWALK (TYPE D)

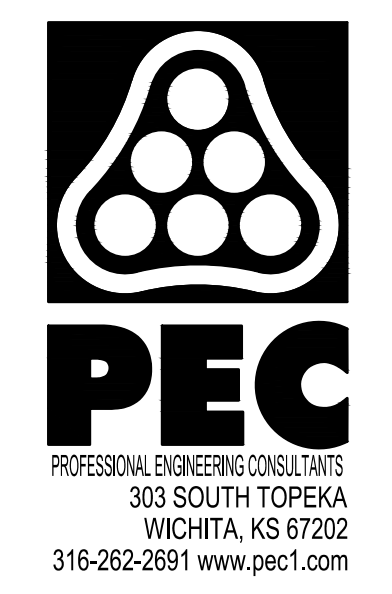


STANDARD WHEELCHAIR RAMP CONSTRUCTION DETAIL FOR STREETS WITH MONOLITHIC CURB WITH ONE FULL SIDEWALK (TYPE D)



NOTE: HANOVER DETECTABLE WARNING PAVERS (OR AN APPROVED ALTERNATE) SHALL BE USED IN ALL WHEELCHAIR RAMPS. THE 11 3/4\"/>

WHEELCHAIR RAMP DETAILS WITH DETECTABLE WARNING  
CITY ENGINEER  
**GARY JANZEN, P.E.**  
PROJECT NUMBER: \_\_\_\_\_ OCA NUMBER: \_\_\_\_\_ DATE: 08/2013  
SHEET: \_\_\_\_\_ of \_\_\_\_\_  
CITY ENGINEER'S OFFICE  
CITY HALL - SEVENTH FLOOR  
455 NORTH MAIN STREET  
WICHITA, KANSAS 67202-1620  
(316) 268-4501



PAVING IMPROVEMENTS TO SERVE THE VILLAS AT OAK CREEK 3RD ADDITION  
GARY JANZEN, P.E. - CITY ENGINEER  
CITY OF WICHITA ENGINEERING PROJECT NO. 472-2022-085795

JOB NO.	210524-000
DATE	SEPTEMBER 2022
PM	TPA
DESIGNED BY	AKL, LGP
DRAWN BY	CP
CHECKED BY	RJS

WHEELCHAIR RAMP DETAILS

Saved: 06-09-2022 2:02:31 PM by CARLOS PEREZ  
Plot: 06-09-2022 4:12:43 PM by LUKE PETER  
U:\WICHITA-CIVIL\2021\210524\000\PECDRAWINGS\210524-000-CP153

SAVED 6/9/2022 2:02:31 PM BY CARLOS PEREZ  
PLOTTED 9/8/2022 4:12:43 PM BY LUKE PETER  
U:\WICHITA-CIVIL\2021\210524\000\PECDRAWINGS\210524-000-CP153.DWG