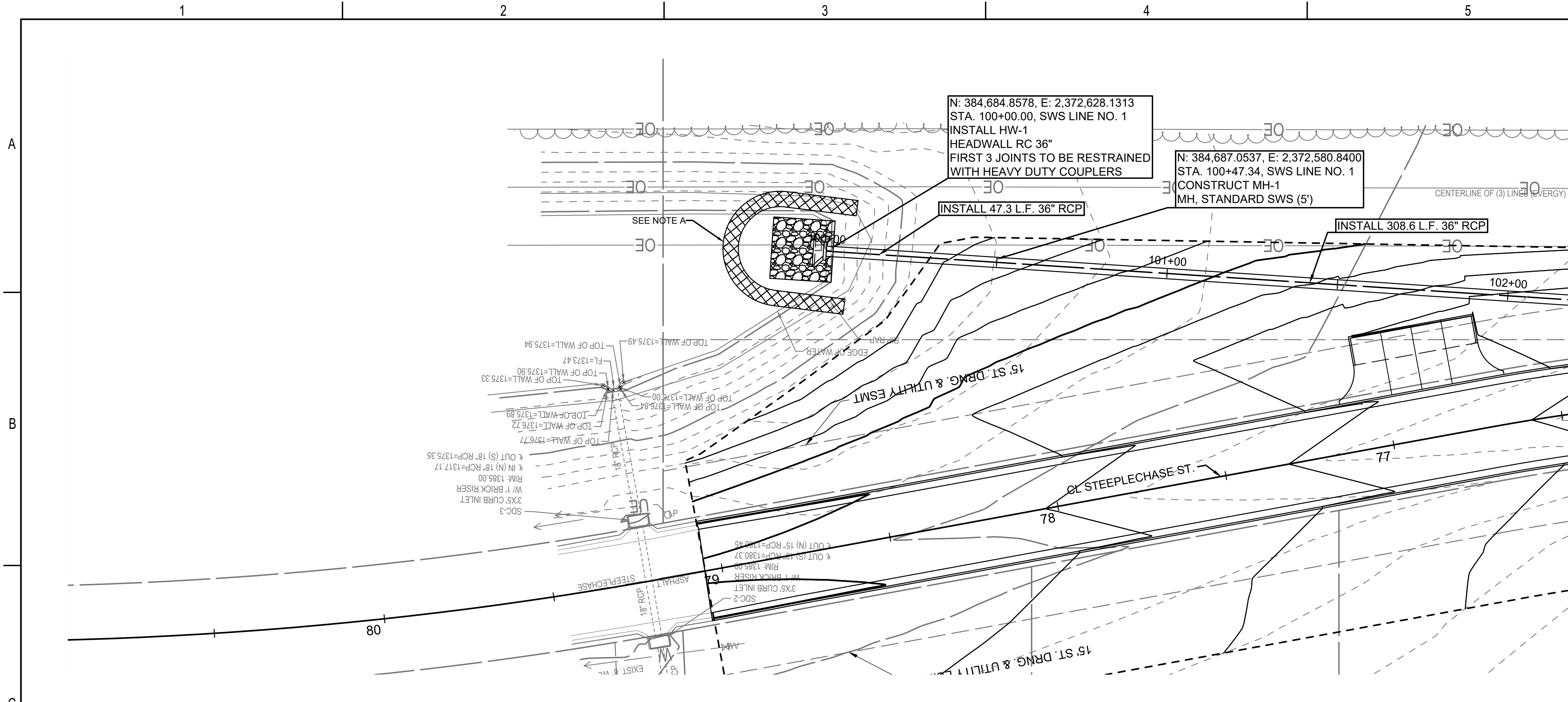


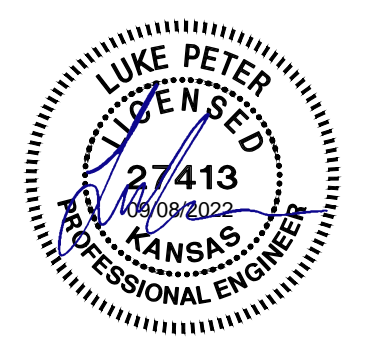
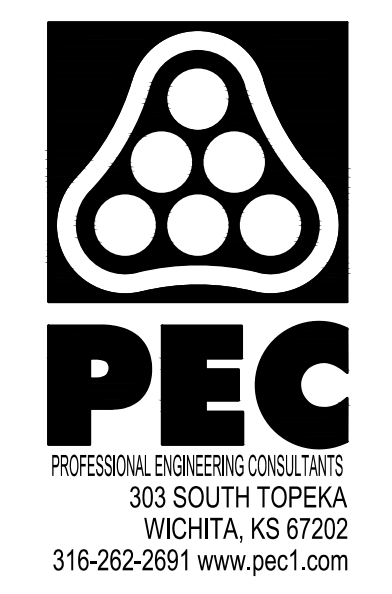
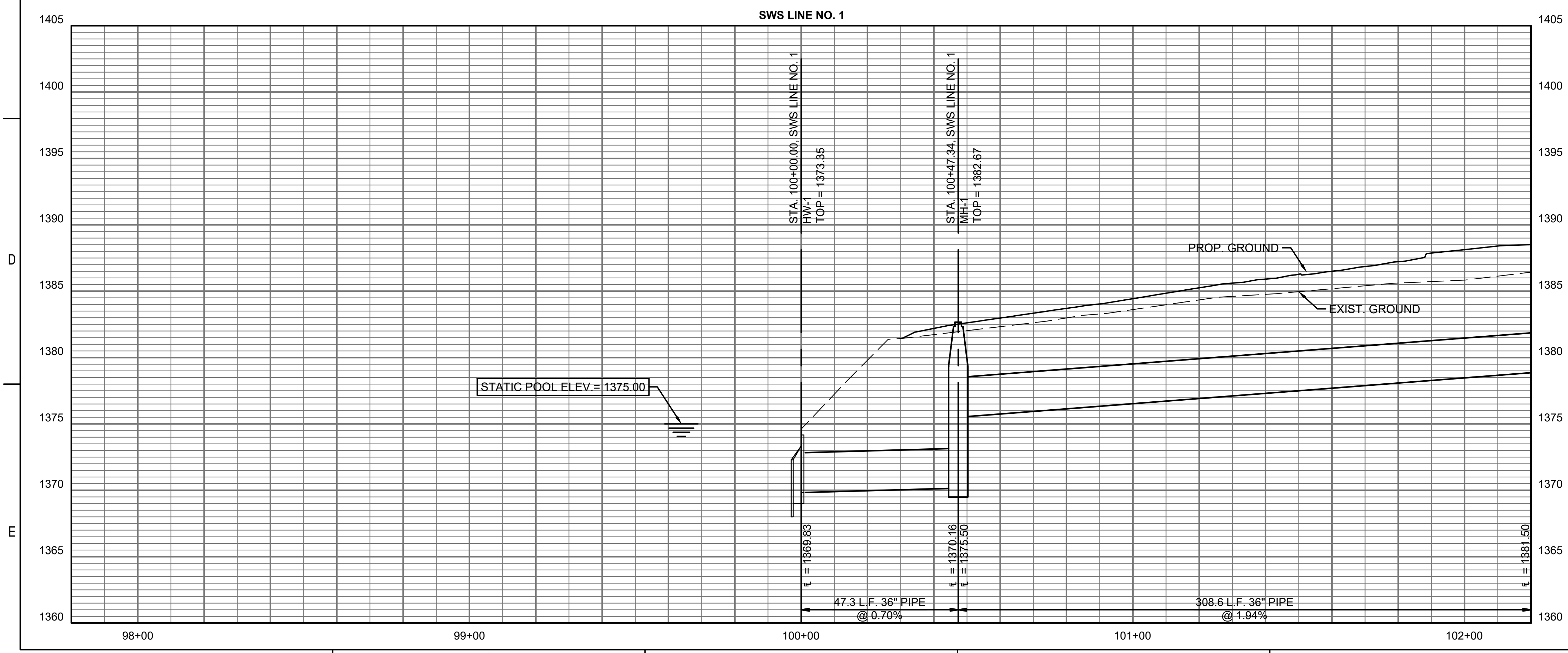
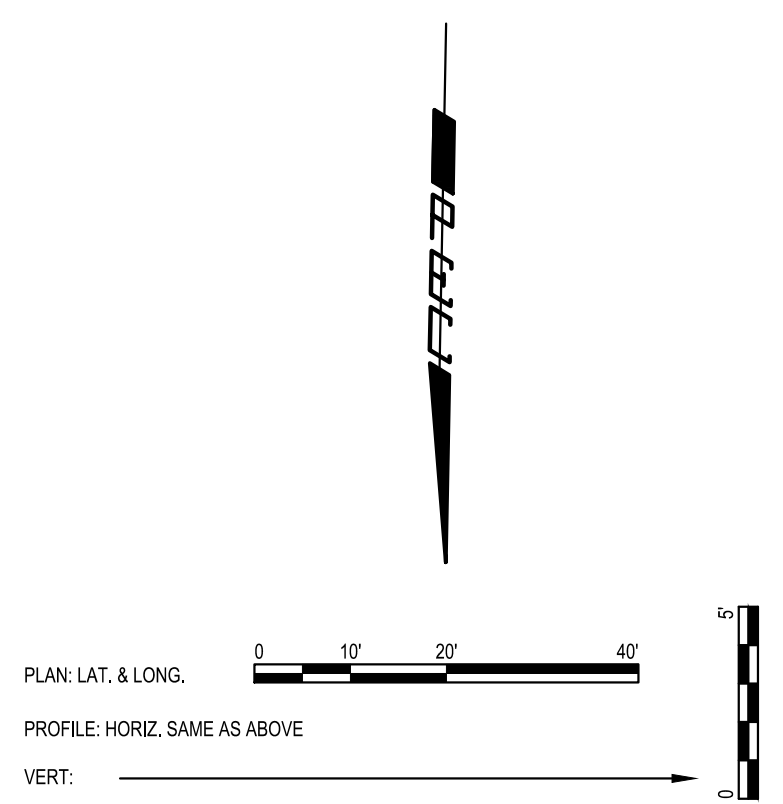
SAVED 9/8/2022 4:04:05 PM BY LUKE.PETER
 PLOTTED 9/8/2022 4:12:56 PM BY LUKE.PETER
 U:\WICHITA-CIVIL\2021\210524\000\PECDRAWINGS\210524-000-CP201.DWG



SEE SHEET NOS.
 CP251, THRU CP254 FOR
 STRUCTURE DETAILS

(A) CONSTRUCT SUITABLE COFFERDAM AND DEWATER AS NECESSARY TO CONSTRUCT SWS LINE NO. 1. COFFERDAM MAY BE COMPACTED EARTH MATERIAL OR SHEET PILES. UPON COMPLETION OF DRAINAGE IMPROVEMENTS, REMOVE COFFERDAM AND RESTORE POND BANKS WITH CLAY LINER. SEE DETAIL THIS SHEET. THIS WORK SHALL BE SUBSIDIARY TO "SITE RESTORATION".

SEE SHEET CP209 FOR ADDITIONAL DETAILS.



PAVING IMPROVEMENTS
 TO SERVE
 THE VILLAS AT
 OAK CREEK 3RD ADDITION
 GARY JANZEN, P.E. - CITY ENGINEER
 CITY OF WICHITA ENGINEERING PROJECT NO. 472-2022-085795

JOB NO.	210524-000
DATE	SEPTEMBER 2022
PM	TPA
DESIGNED BY	AKL, LGP
DRAWN BY	CP
CHECKED BY	RJS

SWS LINE NO. 1 PLAN &
 PROFILE

CP201
 26 OF 53