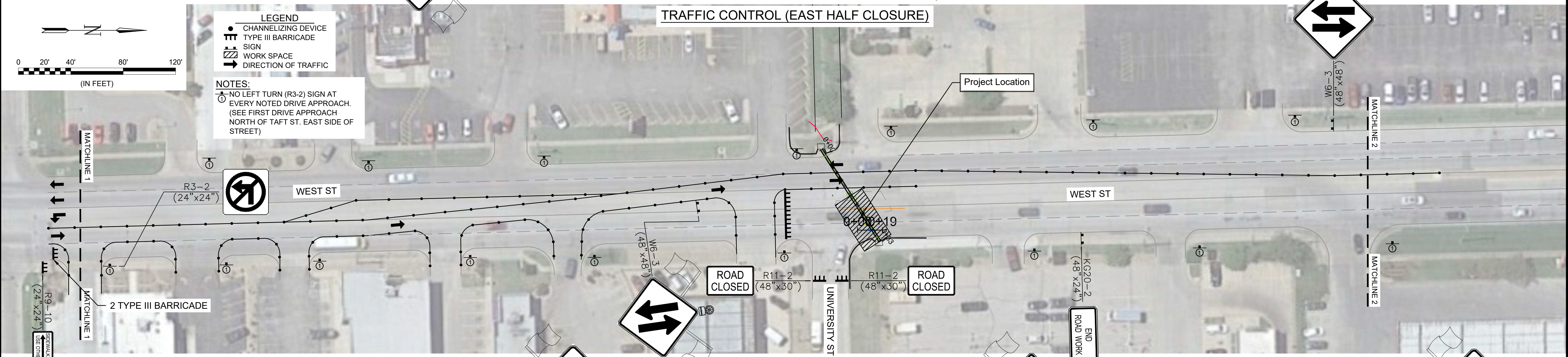


File: L:\2021\12\14\1011 - West Street SWS Replacement\Drawings\C3D\TRAFFIC CONTROL (EAST HALF CLOSURE).dwg Last Save: 1/18/2022 5:39 PM Last saved by: MCameraPiedra  
 Last plotted by: Glover, Eric J. Plot Style: --- Plot Scale: 1:2,5849 Plot Date: 4/20/2022 1:43 PM Plotter used: None

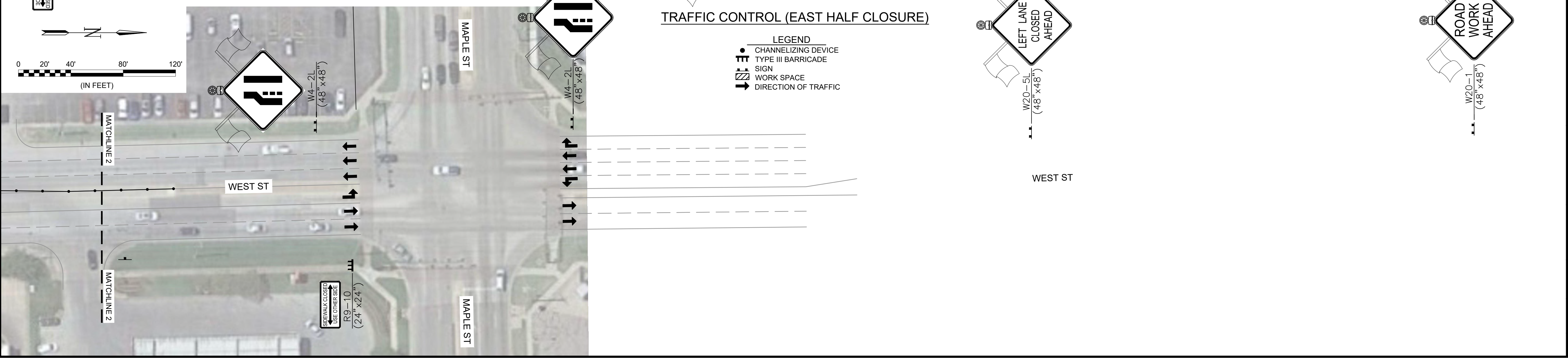
TRAFFIC CONTROL (EAST HALF CLOSURE)



TRAFFIC CONTROL (EAST HALF CLOSURE)



TRAFFIC CONTROL (EAST HALF CLOSURE)



**GARVER**  
 © 2021 GARVER, LLC  
 THIS DOCUMENT, ALONG WITH THE IDEAS AND DESIGNS CONVEYED HEREIN, SHALL BE CONSIDERED INSTRUMENTS OF PROFESSIONAL SERVICE AND ARE PROPERTY OF GARVER, LLC. ANY USE, REPRODUCTION, OR DISTRIBUTION OF THIS DOCUMENT, ALONG WITH THE IDEAS AND DESIGN CONTAINED HEREIN, IS PROHIBITED UNLESS AUTHORIZED IN WRITING BY GARVER, LLC OR EXPLICITLY ALLOWED IN THE GOVERNING PROFESSIONAL SERVICES AGREEMENT FOR THIS WORK.  
 1995 Midfield Road  
 Wichita, KS 67209  
 (316) 221-3016

REV.	DATE	DESCRIPTION	BY

CITY OF WICHITA  
 WICHITA, KANSAS  
  
 WEST & UNIVERSITY  
 SWS REPLACEMENT

TRAFFIC CONTROL (EAST HALF CLOSURE)  
 JOB NO.: 21T41004  
 DATE: Jan-22  
 DESIGNED BY: EJG  
 DRAWN BY: MCP  
 BAR IS ONE INCH ON ORIGINAL DRAWING  
 IF NOT ONE INCH ON THIS SHEET, ADJUST SCALES ACCORDINGLY.  
 DRAWING NUMBER  
 SHEET NUMBER **4** OF **5**