

PL01101.DWG, Friday, November 04, 2022 @ 09:22AM

STA. 20+08.18, WTR LINE 1=  
 STA. 10+00.00, WTR LINE 4=  
 STA. 10+00.00, WTR LINE 6=  
 ST. STA. 31+09.78, 24.00' LT.  
 1-8" DIMJ CROSS  
 1-8"x4" REDUCER (E)  
 1-4" VALVE ASSEMBLY (E)  
 (MJ GATE VALVE)  
 1-8" VALVE ASSEMBLY (W)  
 (MJ GATE VALVE)  
 VALVE BOX ELEV=1361.0

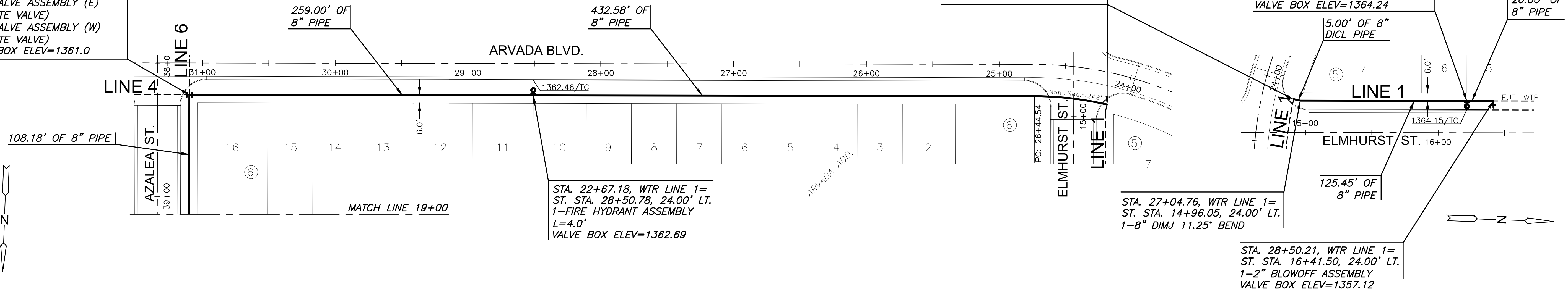
STA. 26+99.76, WTR LINE 1=  
 ST. STA. 24+12.82, 24.00' LT.  
 1-8" DIMJ 90° BEND

STA. 28+30.21, WTR LINE 1=  
 ST. STA. 16+21.50, 24.00' LT.  
 1-FIRE HYDRANT ASSEMBLY  
 L=4.0'  
 1-8" ANCH. VALVE ASSEMBLY (N),  
 (SPECIAL) (MJ GATE VALVE)  
 VALVE BOX ELEV=1364.24

STA. 22+67.18, WTR LINE 1=  
 ST. STA. 28+50.78, 24.00' LT.  
 1-FIRE HYDRANT ASSEMBLY  
 L=4.0'  
 VALVE BOX ELEV=1362.69

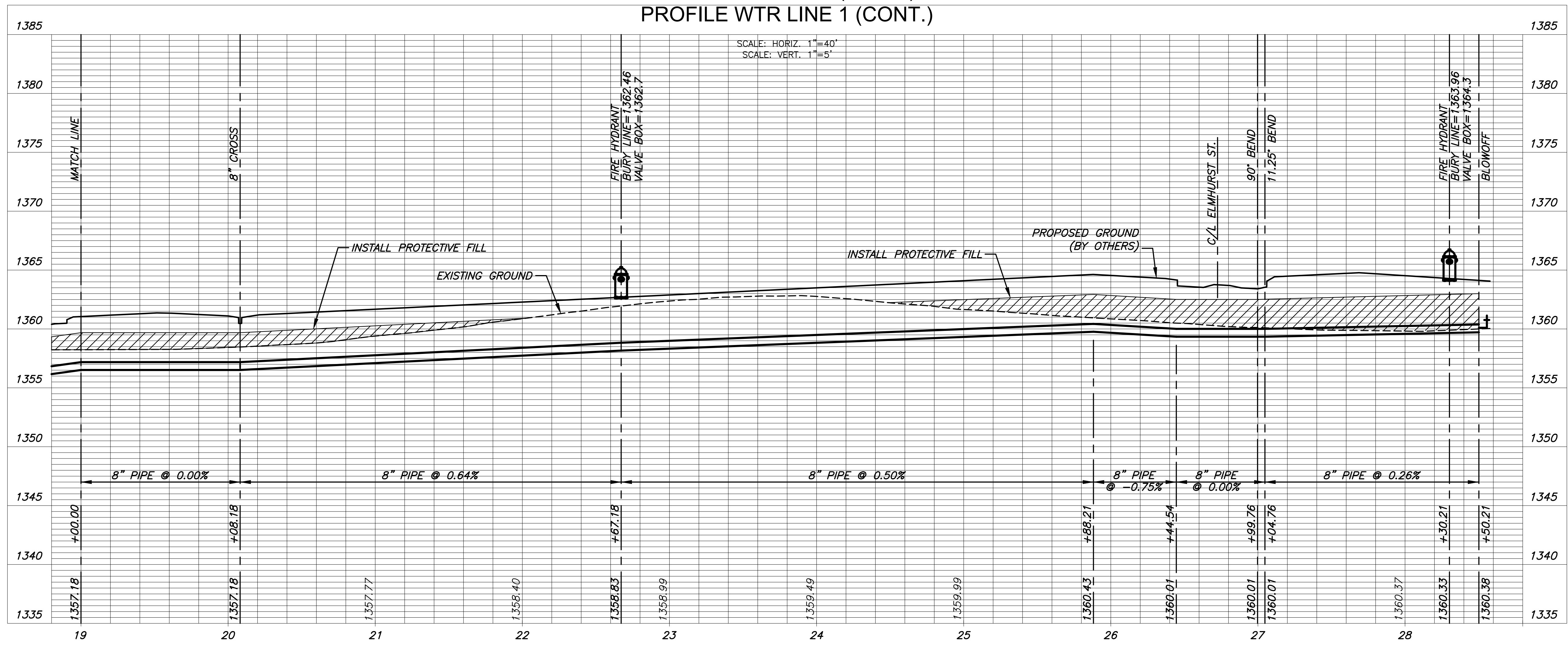
STA. 28+50.21, WTR LINE 1=  
 ST. STA. 16+41.50, 24.00' LT.  
 1-2" BLOWOFF ASSEMBLY  
 VALVE BOX ELEV=1357.12

STA. 27+04.76, WTR LINE 1=  
 ST. STA. 14+96.05, 24.00' LT.  
 1-8" DIMJ 11.25° BEND



NOTE:  
 CONTRACTOR TO VERIFY LOCATION  
 AND ELEVATION OF EXISTING WATER  
 LINE PRIOR TO CONSTRUCTION.

PLAN WTR LINE 1 (CONT.)  
 PROFILE WTR LINE 1 (CONT.)



SCALE: HORIZ. 1"=40'  
 SCALE: VERT. 1"=5'



WATER DISTRIBUTION PLANS FOR  
**ARVADA ADDITION**  
 PHASE 1

©2022  
 MKEC Engineering  
 All Rights Reserved  
 www.mkec.com  
 These drawings and their contents,  
 including, but not limited to, all concepts,  
 designs, & ideas are the exclusive  
 property of MKEC Engineering (MKEC),  
 and may not be used or reproduced in any  
 way without the express consent of MKEC.

WTR LINE 1  
 (CONT.)

PROJECT NO.	448-2022-024786	
DATE	NOV 2022	
SCALE	1"=40'	
DESIGNED	DRAWN	CHECKED
SPE	LM	SPE

NO.	REVISION	DATE

SHEET NO.  
 05 OF 17

J:\PROJECTS\2022\0110708\_MPH\_119THAND37TH\DEVELOPMENT\SERVICES\024786 CAD\SH1\505 CIVIL\WTRPH1\207094-05-2000.DWG