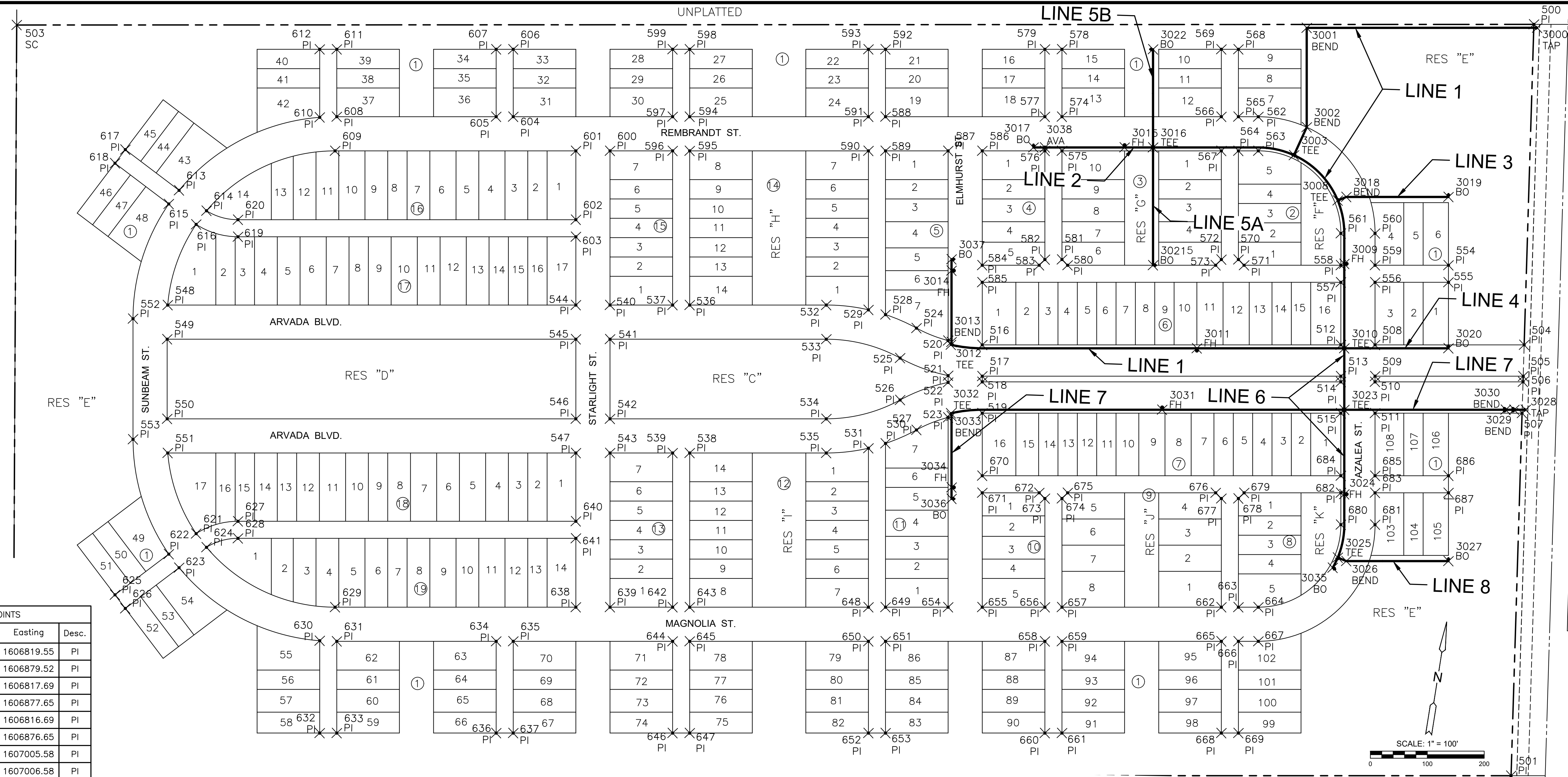


J:\PROJECTS\2020\201010708_MPH_119THAND37THDEVELOPMENT\SERVICERS\002788 CAD\SHS\05 CIVIL\WTRPH\120709-05-3000.DWG
 J:\PROJECTS\2020\201010708_MPH_119THAND37THDEVELOPMENT\SERVICERS\002788 CAD\SHS\05 CIVIL\WTRPH\120709-05-3000.DWG
 PLOTTED: Friday, November 04, 2022 @ 09:07AM



PLAT POINTS			
Point #	Northing	Easting	Desc.
680	1706922.86	1606819.55	PI
681	1706924.86	1606879.52	PI
682	1706978.83	1606817.69	PI
683	1706980.83	1606877.65	PI
684	1707008.82	1606816.69	PI
685	1707010.81	1606876.65	PI
686	1707015.10	1607005.58	PI
687	1706985.12	1607006.58	PI

PLAT POINTS			
Point #	Northing	Easting	Desc.
500	1707812.99	1607129.21	PI
501	1706491.86	1607133.05	PI
502	1706404.27	1604502.55	SC
503	1707723.15	1604465.29	SC
504	1707249.40	1607130.84	PI
505	1707194.38	1607131.00	PI
506	1707184.37	1607131.03	PI
507	1707129.35	1607131.19	PI
508	1707240.68	1606869.00	PI
509	1707185.71	1606870.83	PI
510	1707175.72	1606871.16	PI
511	1707120.75	1606872.99	PI
512	1707238.69	1606809.03	PI
513	1707183.72	1606810.86	PI
514	1707173.72	1606811.20	PI
515	1707118.75	1606813.03	PI
516	1707217.72	1606179.38	PI
517	1707162.75	1606181.21	PI
518	1707152.76	1606181.55	PI
519	1707097.79	1606183.38	PI

PLAT POINTS			
Point #	Northing	Easting	Desc.
520	1707223.25	1606119.16	PI
521	1707161.74	1606121.21	PI
522	1707149.77	1606121.61	PI
523	1707088.26	1606123.66	PI
524	1707243.33	1606062.88	PI
525	1707189.77	1606035.84	PI
526	1707116.13	1606038.29	PI
527	1707064.48	1606068.83	PI
528	1707265.21	1606007.71	PI
529	1707272.62	1605977.44	PI
530	1707038.99	1606015.24	PI
531	1707029.58	1605985.54	PI
532	1707278.56	1605903.17	PI
533	1707218.60	1605905.17	PI
534	1707078.67	1605909.83	PI
535	1707018.71	1605911.82	PI
536	1707270.58	1605663.34	PI
537	1707269.58	1605633.35	PI
538	1707010.72	1605671.99	PI
539	1707009.72	1605642.01	PI

PLAT POINTS			
Point #	Northing	Easting	Desc.
540	1707265.92	1605523.41	PI
541	1707205.95	1605525.41	PI
542	1707066.03	1605530.07	PI
543	1707006.06	1605532.07	PI
544	1707263.92	1605463.45	PI
545	1707203.95	1605465.44	PI
546	1707064.03	1605470.10	PI
547	1707004.06	1605472.10	PI
548	1707240.06	1604746.82	PI
549	1707180.06	1604747.84	PI
550	1707040.14	1604752.50	PI
551	1706980.20	1604755.48	PI
552	1707214.04	1604686.68	PI
553	1707002.16	1604693.73	PI
554	1707384.90	1606993.27	PI
555	1707354.92	1606994.27	PI
556	1707350.62	1606865.34	PI
557	1707348.63	1606805.37	PI
558	1707378.61	1606804.37	PI
559	1707380.61	1606864.34	PI

PLAT POINTS			
Point #	Northing	Easting	Desc.
620	1707394.08	1604865.16	PI
621	1706840.22	1604810.13	PI
622	1706802.67	1604763.27	PI
623	1706779.34	1604782.13	PI
624	1706816.83	1604829.08	PI
625	1706727.96	1604671.21	PI
626	1706704.67	1604690.12	PI
627	1706864.37	1604882.80	PI
628	1706834.39	1604883.80	PI
629	1706719.14	1605058.35	PI
630	1706659.30	1605033.33	PI
631	1706659.27	1605063.35	PI
632	1706497.16	1605038.73	PI
633	1706498.16	1605068.71	PI
634	1706668.59	1605343.19	PI
635	1706669.59	1605373.18	PI
636	1706707.48	1605348.56	PI
637	1706508.48	1605378.54	PI
638	1706733.21	1605481.12	PI
639	1706735.21	1605541.09	PI

PLAT POINTS			
Point #	Northing	Easting	Desc.
640	1706884.13	1605476.09	PI
641	1706854.15	1605477.09	PI
642	1706738.87	1605651.03	PI
643	1706739.87	1605681.01	PI
644	1706678.90	1605653.02	PI
645	1706679.90	1605683.01	PI
646	1706517.80	1605658.39	PI
647	1706518.79	1605688.37	PI
648	1706750.32	1605994.84	PI
649	1706751.32	1606024.82	PI
650	1706690.35	1605996.83	PI
651	1706691.35	1606026.82	PI
652	1706529.24	1606002.20	PI
653	1706530.24	1606032.18	PI
654	1706754.98	1606134.76	PI
655	1706756.98	1606194.72	PI
656	1706760.64	1606304.66	PI
657	1706761.64	1606334.65	PI
658	1706700.67	1606306.66	PI
659	1706701.67	1606336.64	PI

PLAT POINTS			
Point #	Northing	Easting	Desc.
660	1706539.56	1606312.02	PI
661	1706540.56	1606342.01	PI
662	1706770.95	1606614.49	PI
663	1706771.95	1606644.48	PI
664	1706773.12	1606679.46	PI
665	1706710.99	1606616.49	PI
666	1706711.99	1606646.47	PI
667	1706713.15	1606681.45	PI
668	1706549.88	1606621.85	PI
669	1706550.88	1606651.84	PI
670	1706987.85	1606187.04	PI
671	1706957.86	1606168.03	PI
672	1706961.19	1606287.98	PI
673	1706951.53	1606298.31	PI
674	1706952.53	1606328.29	PI
675	1706962.86	1606337.95	PI
676	1706971.51	1606597.81	PI
677	1706961.85	1606608.14	PI
678	1706962.85	1606638.12	PI
679	1706973.17	1606647.78	PI

WATER POINTS			
Point #	Northing	Easting	Desc.
3000	1707807.19	1607135.23	TAP
3001	1707793.55	1606730.52	BEND
3002	1707619.03	1606736.33	BEND
3003	1707569.17	1606715.59	TEE
3008	1707492.15	1606795.10	TEE
3009	1707381.31	1606810.29	FH
3010	1707232.89	1606815.23	TEE
3011	1707224.27	1606556.37	FH
3012	1707216.06	1606124.29	TEE
3013	1707220.97	1606125.24	BEND
3014	1707346.35	1606121.07	FH
3015	1707572.85	1606417.70	FH
3016	1707574.51	1606467.67	TEE
3017	1707567.53	1606257.78	BO
3018	1707498.86	1606809.90	BEND
3019	1707504.83	1606989.28	BO
3020	1707238.98	1606998.13	BO
3021	1707367.63	1606474.56	BO
3022	1707746.92	1606461.93	BO
3023	1707124.95	1606818.82	TEE

WATER POINTS			
Point #	Northing	Easting	Desc.
3024	1706976.53	1606823.77	FH
3025	1706864.93	1606815.98	TEE
3026	1706859.22	1606831.20	BEND
3027	1706865.19	1607010.57	BO
3028	1707135.55	1607137.18	TAP
3029	1707134.89	1607117.19	BEND
3030	1707134.39	1607102.20	BEND
3031	1707114.30	1606499.00	FH
3032	1707095.78	1606128.30	TEE
3033	1707090.95	1606129.57	BEND
3034	1706965.56	1606133.75	FH
3035	1706846.73	1606807.73	BO
3036	1706945.57	1606134.41	BO
3037	1707366.34	1606120.40	BO
3038	1707568.19	1606277.77	AVA



WATER DISTRIBUTION PLANS FOR
ARVADA ADDITION
 PHASE 1

©2022
 MKEC Engineering
 All Rights Reserved
 www.mkec.com
 These drawings and their contents, including, but not limited to, all concepts, designs, & ideas are the exclusive property of MKEC Engineering (MKEC), and may not be used or reproduced in any way without the express consent of MKEC.

BUBBLE MAP

PROJECT NO.	448-2022-024786	
DATE	NOV 2022	
SCALE	1"=100'	
DESIGNED	DRAWN	CHECKED
SPE	LM	SPE
NO.	REVISION	DATE
SHEET NO.		
11 OF 17		