

PLOTTED: Wednesday, November 09, 2022 @ 02:24PM

J:\PROJECTS\2022\010706_SCHROEDER_127TH AND PAWNEE\00_20706_CAD\SHS\05_CIVIL\WTR\20706_WTR_LINE 3.DWG

!!CAUTION!!
EX. GAS MAINS
CONTRACTOR TO COORDINATE WITH
KANSAS GAS AND PHILLIPS 66
PRIOR TO INSTLATION OF WATER
MAIN WITHIN GAS EASEMENTS

STA. 10+30.00 TO STA.
10+81.00, LINE 3
51.0' DIRECTIONAL DRILL
ALL CONNECTIONS TO
DIRECTIONAL DRILLED PIPE
MUST BE RESTRAINED JOINTS

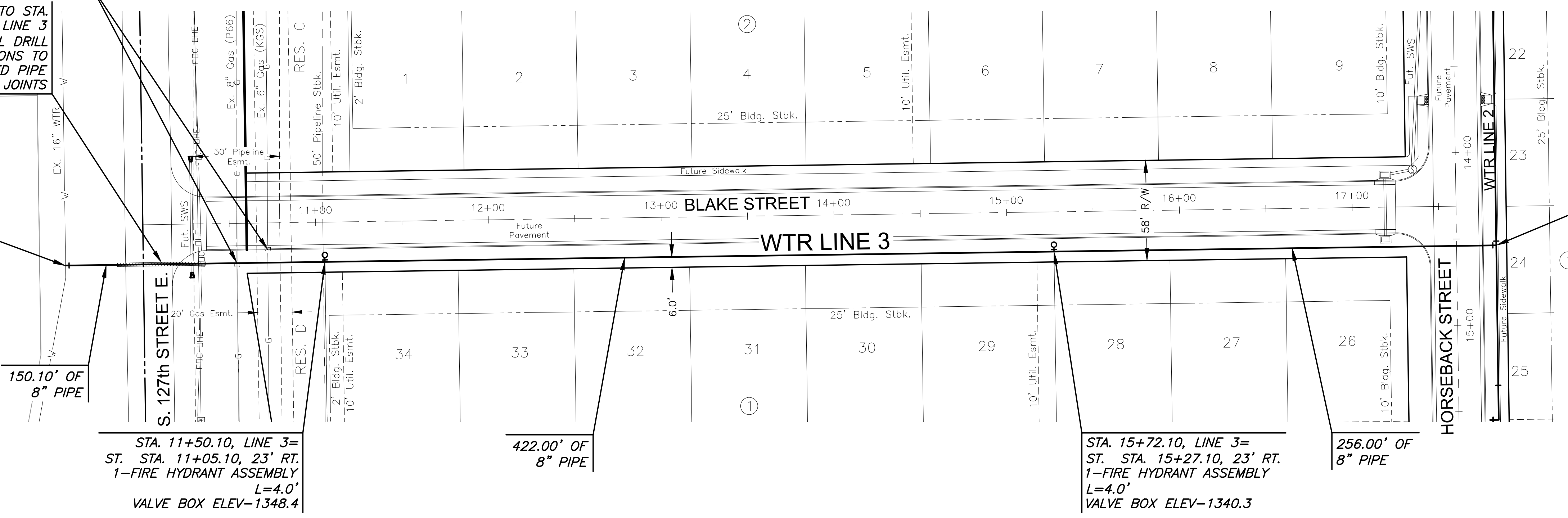
STA. 10+00.00, LINE 3
CONNECT TO EX. 16" WATER
CITY TO PROVIDE 1-16"x8" TAPPING
SLEEVE, 8" VALVE, AND VALVE BOX.
CITY TO INSTALL TAPPING SLEEVE
AND VALVE. CONTRACTOR TO SET
FINAL VALVE BOX ELEVATION.
(COST SUBSIDIARY TO PROJECT)

!!WARNING!!
HIGH PRESSURE PIPELINE
NO EXCAVATION OR CONSTRUCTION
IN THIS AREA WITHOUT ONE-CALL
AND WITHOUT CONTACTING GAS
COMPANIES.

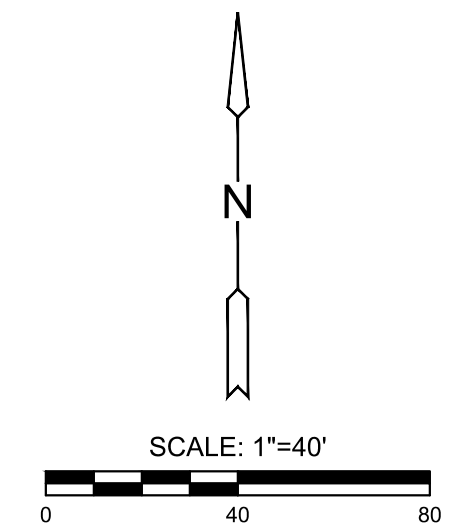
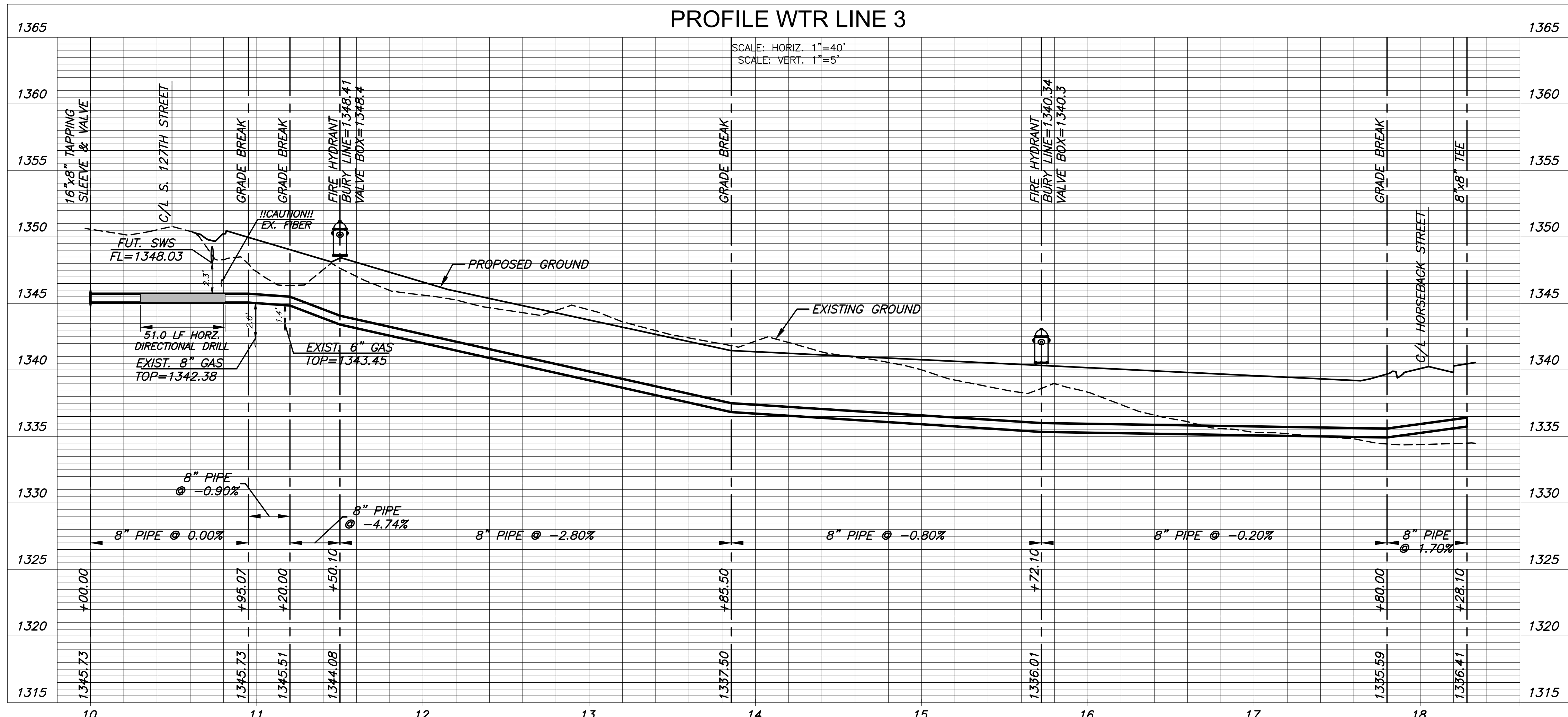
PHILLIPS 66 PIPELINE LLC (PSSPL)
AT 316-761-1621

KANSAS GAS
AT 316-832-3123

NOTE:
CONTRACTOR TO VERIFY LOCATION
AND ELEVATION OF EXISTING WATER
LINE PRIOR TO CONSTRUCTION.



PLAN WTR LINE 3
PROFILE WTR LINE 3



WATER DISTRIBUTION PLANS FOR
BUFFALO GROVE ADDITION
WICHITA, KANSAS

©2022
MKEC Engineering
All Rights Reserved
www.mkec.com
These drawings and their contents, including, but not limited to, all concepts, designs, & ideas are the exclusive property of MKEC Engineering (MKEC), and may not be used or reproduced in any way without the express consent of MKEC.

WATER LINE 3

PROJECT NO.	448-2022-026736
DATE	NOV 2022
SCALE	1" = 40"
DESIGNED	KPG
DRAWN	MKEC
CHECKED	KPG

NO.	REVISION	DATE

SHEET NO.
07 OF 14