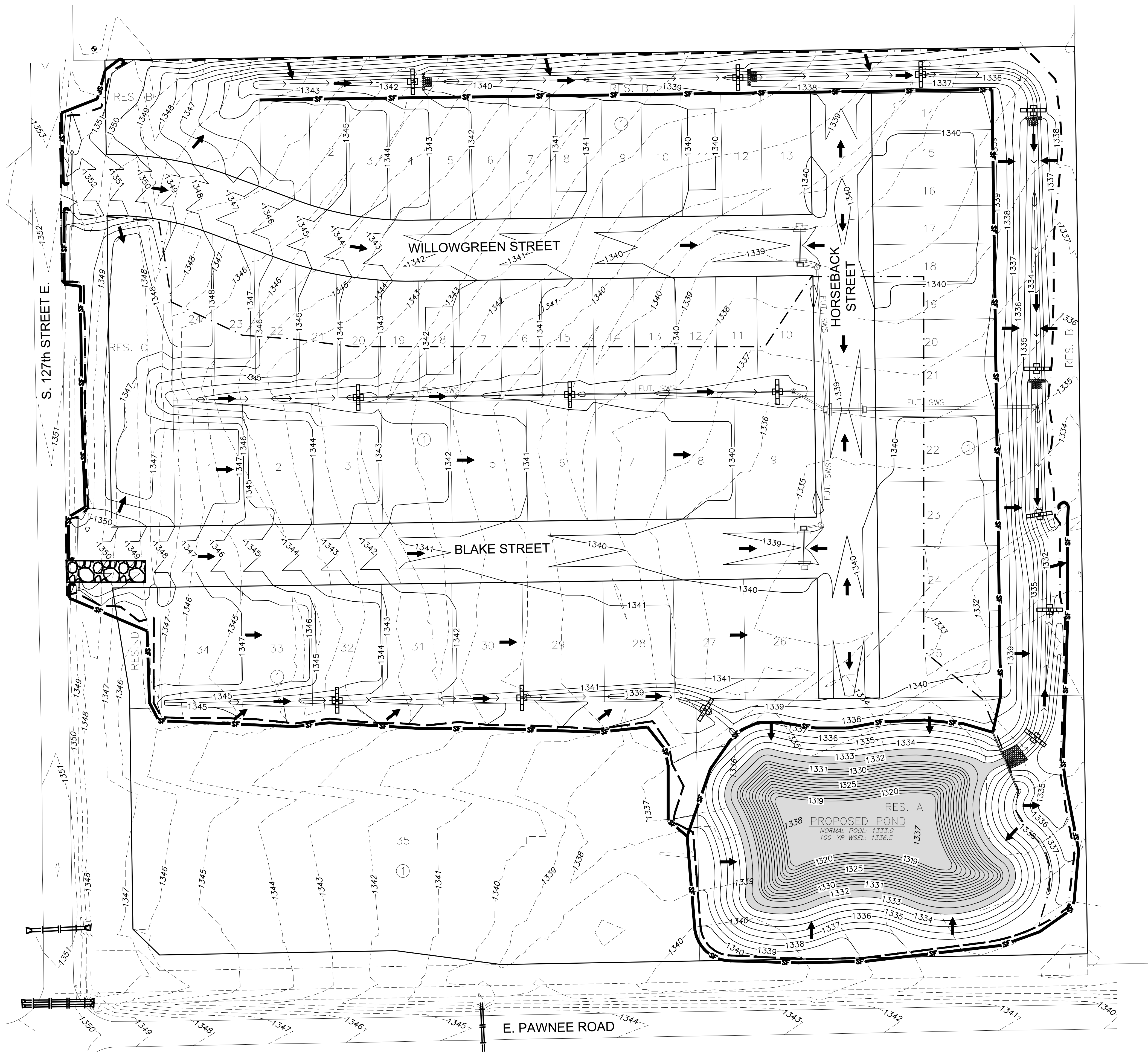


J:\PROJECTS\2022\2001010706\_SCHROEDER\_127TH AND PAWNEE\00\_20706 CAD\SHOTS\05\_CIVIL\GRD\20706\_GRD\_EROSION.DWG  
 PLOTTED: Friday, November 11, 2022 @ 08:54AM



### EROSION CONTROL NOTES

1. EROSION CONTROL IS TO MEET ALL FEDERAL, STATE, COUNTY AND LOCAL CODE STANDARDS.
2. IN THE EVENT THAT A PORTION OF THE SITE WILL REMAIN DISTURBED FOR MORE THAN 14 DAYS, PERMANENT AND/OR TEMPORARY EROSION CONTROL MEASUREMENTS SHALL BE INSTALLED.
3. ALL AREAS SHALL BE FINE GRADED AND SURFACE SHALL BE FREE FROM STICKS, SMALL STONES, AND OTHER EXTRANEIOUS MATERIALS.
4. CONTRACTOR SHALL PROVIDE EROSION PROTECTION THROUGHOUT PROJECT CONSTRUCTION. THE PLAN PROVIDED HERE IS FOR FINAL PROTECTION, VARIOUS PHASES OF THIS PLAN SHALL BE IMPLEMENTED OR MODIFIED TO CONTROL EROSION. MODIFICATIONS OF THE PLAN SHALL BE APPROVED BY THE OWNER'S REPRESENTATIVE.
5. CONTRACTOR IS RESPONSIBLE FOR MAINTAINING AND IMPLEMENTING ALL EROSION CONTROL.
6. IN ORDER TO PREVENT SILT OR SEDIMENT FROM ENTERING ADJACENT PROPERTIES, APPROPRIATE BMP'S SHALL BE IMPLEMENTED WITHIN THE PROJECT.
7. ANY MUD TRACKED ONTO ADJACENT PAVED AREAS OR STREETS SHALL BE REMOVED AT THE END OF EACH WORK DAY.
8. PER THE REQUIREMENTS OF THE NOI/SWPPP, BMP INSPECTION REPORTS SHALL BE COMPLETED BY THE CONTRACTOR WEEKLY AND WITHIN 24 HOURS AFTER A 1/2" RAIN. REPORTS SHALL BE KEPT WITH THE SWPPP ON SITE.
9. CONTRACTOR SHALL PROVIDE A SIGN NEAR THE ENTRANCE WITH THE FOLLOWING INFORMATION:
  - A. CONTACT NAME AND INFORMATION
  - B. A COPY OF THE NOI
  - C. LOCATION OF SWPPP

### SEDIMENTATION BASIN CALCULATIONS

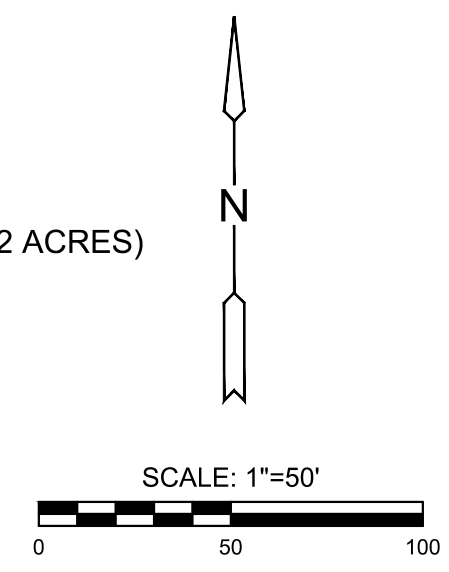
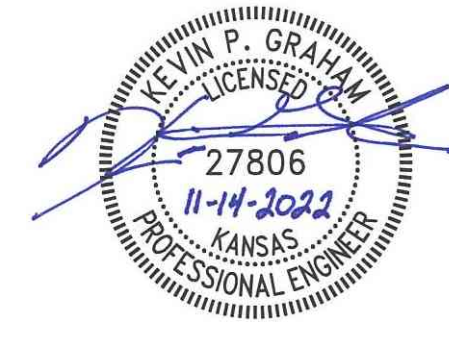
**REQUIRED:**  
 DISTURBED AREA DRAINAGE TO SEDIMENT BASIN = 8.6 ACRES  
 8.6 ACRES X (3,600 CUBIC FEET/ ACRE) = 30,960 CUBIC FEET REQUIRED  
  
**PROVIDED:**  
 \*assumed average pond depth = 10.0 FT  
 BOTTOM (ELEV. 1319.0) = approx. 6,050 SQUARE FEET  
 TOP (NP= ELEV. 1333.0) = approx. 35,502 SQUARE FEET  
 AVERAGE= (6,050 SQUARE FEET + 35,502 SQUARE FEET) / 2 = 20,776 SQUARE FEET  
 20,776 SQUARE FEET X 10.0 FEET = 207,760 CUBIC FEET PROVIDED

### CLEAN OUT ELEVATION CALCULATIONS

20% OF REQUIRED SEDIMENT BASIN CAPACITY  
 20% (30,960 CUBIC FEET) = 6,192 CUBIC FEET  
 THE SEDIMENT WILL BE AT A MAXIMUM DEPTH OF 1.1' (EL=1320.1) WHEN CLEAN OUT IS NECESSARY.

### LEGEND

- 1370 --- EXIST. CONTOUR
- 1370 — PROP. CONTOUR
- EX. STORMWATER SEWER
- FLOW ARROW
- ⊕ DITCH CHECK (14)
- SF — SILT FENCE (APPROX. 3,845 L.F.)
- - - - - LIMITS OF GRADING (APPROX. 15.2 ACRES)
- ⊗ STABILIZED CONSTRUCTION ENTRANCE



GRADING PLANS FOR  
**BUFFALO GROVE ADDITION**  
 WICHITA, KANSAS

©2022  
 MKEC Engineering  
 All Rights Reserved  
 www.mkec.com  
 These drawings and their contents, including, but not limited to, all concepts, designs, & ideas are the exclusive property of MKEC Engineering (MKEC), and may not be used or reproduced in any way without the express consent of MKEC.

### EROSION CONTROL PLAN

PROJECT NO.	458-2022-085514	
DATE	NOV 2022	
SCALE	1" = 50'	
DESIGNED	DRAWN	CHECKED
KPG	KPG	KPG
NO.	REVISION	DATE
SHEET NO.		
10 OF 17		