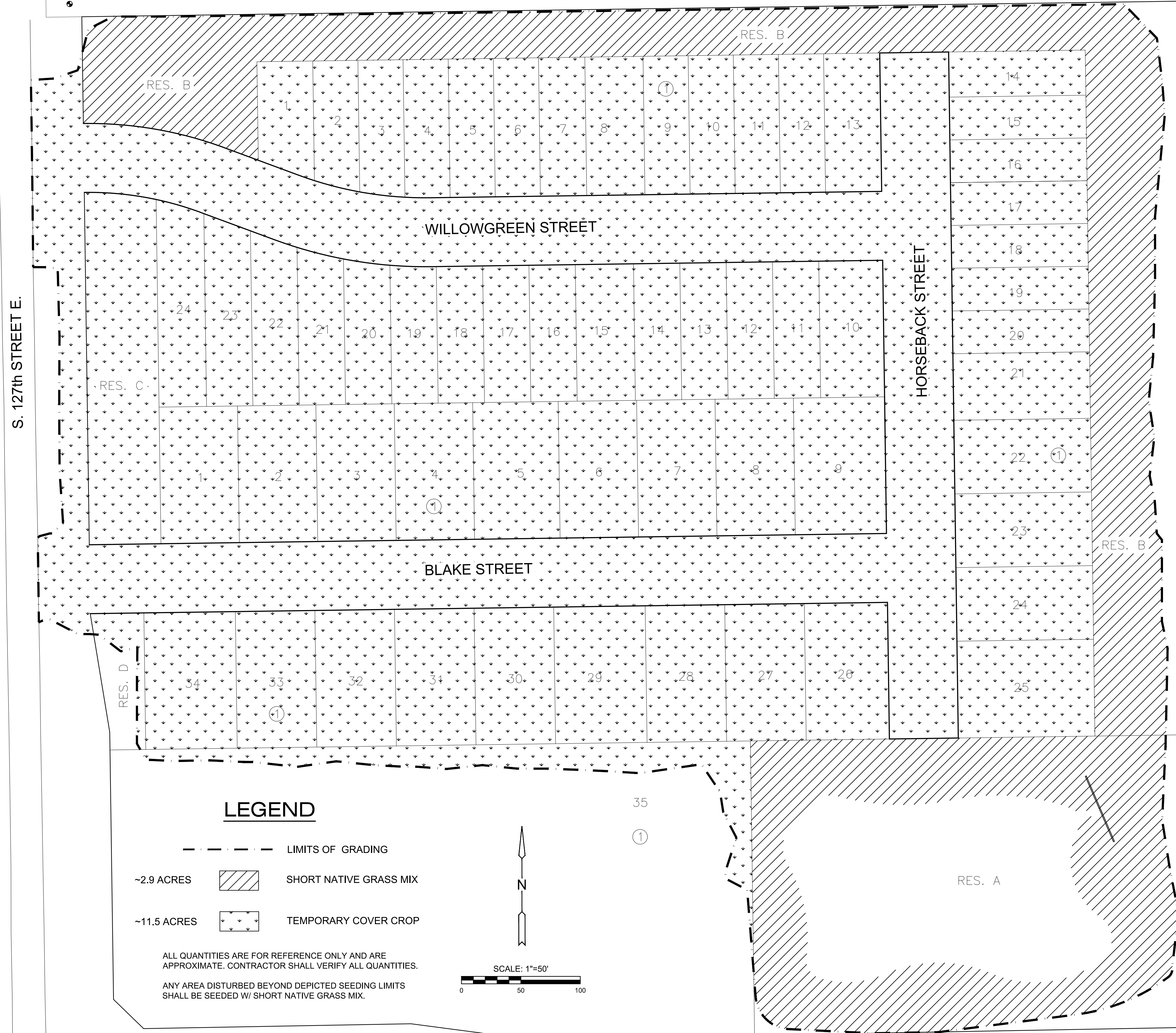


J:\PROJECTS\2020\20010706\_SCHROEDER\_127TH AND PAWNEE\00\_20706 CAD\SHS\05 CIVIL\GRD\20706\_GRD\_SEEDING.DWG  
 PLOTTED: Friday, November 11, 2022 @ 08:15AM



### SEEDING NOTES

- SEEDBED PREPARATION:**
- ONCE TOPSOIL HAS BEEN PLACED, DISC/SCARIFY SOIL PRIOR TO SEEDING UNLESS SEEDING INTO INTENTIONALLY PLANTED COVER CROP.
  - IT IS INTENDED A COVER CROP (TEMPORARY SEEDING) BE PLANTED IN ALL DISTURBED AREAS WHEN THE CALENDAR IS OUTSIDE OF THE NATIVE SEEDING DATES. THIS INCLUDES ALL NATIVE SEEDING AREAS (COST FOR COVER CROP WITHIN NATIVE SEEDING AREAS SHALL BE SUBSIDIARY TO NATIVE SEED ITEMS). REFER TO EROSION CONTROL & SEEDING PLAN NOTES.
- PERMANENT SEEDING MIX:**
- ALL DISTURBED AREAS AS SHOWN ON THE SEEDING PLAN SHALL RECEIVE PERMANENT NATIVE GRASS SEED MIX AND FERTILIZED AFTER GRADING OPERATIONS ARE COMPLETE.
- COVER CROP MIX (TEMPORARY SEEDING):**
- OATS @ 45LBS./ACRE
  - "REGREEN" STERILE WHEAT @ 20 LBS./ACRE
  - CANADA WILD RYE @ 20 LBS./ACRE
  - 110 LBS./ACRE TOTAL
  - SLOW RELEASE FERTILIZER @ 150 LBS./ACRE
- SHORT NATIVE MIX:**
- STOCK SEED FARMS - PRAIRIE 3 PLUS
  - DRILL @ 8 PLS LBS./ACRE
- SEEDING METHOD:**
- SEED PLACEMENT IS IMPORTANT AND SHOULD BE PLANTED NO MORE THAN 1/2" DEEP. TO ENSURE ACCURATE PLACEMENT OF SEED IT IS PREFERRED THAT SEED IS PLACED WITH A 'SEED DRILL' OR 'NO-TILL DRILL'. WHEN THIS METHOD IS NOT PRACTICAL THE SEED BED CAN BE PREPARED WITH A CULTIPACKER THEN BROADCAST SEED AND ROLL AGAIN. NOTE: A CULTIPACKER IS A SEGMENTED ROLLER THAT PREPARES THE SEEDBED THEN SLIGHTLY COMPACT THE SOIL AFTER SEEDING.
- SEEDING RATES:**
- ALL SEED SHOULD BE PLACED AT A UNIFORM RATE OVER THE DELINEATED AREA AT THE SPECIFIED SEEDING RATE. BROADCAST SEED SHALL BE PLACED @ 1.5 TIMES THE DESIGNATED RATE.
- SEEDING DATES:**
- PLANT SEED BETWEEN MARCH 25TH AND APRIL 10TH (PREFERRED) BETWEEN THE FIRST LATE YEAR HEAVY FROST AND MAY 1ST (ACCEPTABLE); OR AS APPROVED BY THE LANDSCAPE ARCHITECT THROUGH COORDINATION WITH THE CONTRACTOR. DO NOT SEED WHEN GROUND IS FROZEN.
- FERTILIZING:**
- GENERALLY FERTILIZING IS NOT REQUIRED OR RECOMMENDED FOR NATIVE GRASS OR WILDFLOWER ESTABLISHMENT AS IT WOULD PROMOTE WEED GROWTH. IN THIS INSTANCE HOWEVER, ALL WEEDS SHOULD BE KILLED PRIOR TO PLANTING. THE ONE TIME APPLICATION OF A GRANULAR FERTILIZER IS RECOMMENDED DURING ESTABLISHMENT.
- WATERING (BY OTHERS):**
- DURING THE ESTABLISHMENT PHASE, SUPPLEMENTAL WATERING (ONCE A WEEK) FOR 4 TO 6 WEEKS MAY BE REQUIRED TO ENSURE SEED GERMINATION; THEN GRADUALLY REDUCE WATERING. A TEMPORARY IRRIGATION SYSTEM SHALL BE UTILIZED FOR INITIAL PLANT ESTABLISHMENT, IF NECESSARY. ADDITIONAL WATERING WILL BE REQUIRED DURING TIMES OF PROLONGED DRY WEATHER IN THE FIRST 2 - 3 GROWING SEASONS.
- MANAGEMENT DURING ESTABLISHMENT (BY OTHERS):**
- WEED CONTROL IS NECESSARY IN NEW SEEDING TO REDUCE COMPETITION FOR MOISTURE, NUTRIENTS AND SUNLIGHT. HERBICIDES ARE NOT RECOMMENDED, AS THEY WILL HARM THE WILDFLOWER STAND. IF NECESSARY, HERBICIDES MAY BE APPLIED USING A WICK APPLICATOR. MOWING DURING THE FIRST YEAR OF ESTABLISHMENT IS THE MOST APPROPRIATE METHOD TO REDUCE WEED POPULATIONS. MOWING MUST TAKE PLACE BEFORE THE WEEDY PLANTS PRODUCE SEED. WEEDS SHALL BE MOWED BEFORE THEY ARE 6" TALL; AS MUCH OF THE WEED SHOULD BE CUT AS POSSIBLE WITHOUT REMOVING TOO MUCH OF THE NEW GROWTH OF NATIVE GRASSES.
- TRASH AND DEBRIS REMOVAL:**
- THE BMP AREA SHOULD BE INSPECTED FOLLOWING MAJOR STORMS AND ON A REGULAR MONTHLY SCHEDULE. ANY TRASH OR DEBRIS SHOULD BE REMOVED AS SOON AS IT IS FOUND TO PREVENT PLANTS FROM BEING SMOTHERED. REGULARLY REMOVING TRASH AND DEBRIS WILL MAINTAIN AESTHETICS OF THE FEATURE. ALL TRASH AND DEBRIS SHOULD BE DISPOSED OF PROPERLY.
- VEGETATION (BY OTHERS):**
- REVIEW AND INSPECT VEGETATION WITHIN THE PLANTING AREA ON A MONTHLY BASIS DURING THE SPRING AND SUMMER MONTHS. INSPECTION SHOULD BE PERFORMED TO DETERMINE HEALTH AND TO IDENTIFY WEEDS AND INVASIVE SPECIES. INSPECTIONS SHOULD BE PERFORMED BY A PERSON TRAINED IN PLANT IDENTIFICATION AND CHARACTERISTICS. VEGETATION SHOULD ONLY INCLUDE PLANT SPECIES AS IDENTIFIED IN THE SEED MIX SPECIFIED. ALL OTHER PLANT SPECIES NOT IDENTIFIED IN SEED MIX ARE TO BE REMOVED DURING MAINTENANCE.
- FALL AND WINTER MANAGEMENT (BY OTHERS):**
- SEEDED AREAS SHOULD BE MOWED FOLLOWING A HARD FREEZE AND AFTER PLANTS HAVE ESTABLISHED SEEDS. IF MOWING IS USED IT SHOULD BE A TWO STEP PROCESS. MOW SITE AND THEN REMOVE TOP GROWTH. TOP GROWTH MAY BE REMOVED BY RAKING, BALING OR MOWING WITH A BAGGER BUT A LAWN VACUUM SHOULD NOT BE USED.
- SATISFACTORY NATIVE STAND:**
- WITHIN ONE FULL GROWING SEASON AND AT THE END OF THE MAINTENANCE PERIOD, A HEALTHY, WELL-ROOTED, VIABLE NATIVE STAND SHALL BE ESTABLISHED, FREE OF BARE AREAS GREATER THAN TWO SQUARE FEET IN SIZE AND FREE OF BROADER AREAS FAILING TO ACHIEVE 85% DESIRABLE PLANT COVERAGE.
  - REESTABLISH NATIVE STANDS THAT DO NOT COMPLY WITH REQUIREMENTS AND CONTINUE MAINTENANCE UNTIL NATIVE STANDS ARE SATISFACTORY.

### GENERAL NOTES

- CONTRACTOR SHALL MAKE THEMSELVES FAMILIAR WITH ALL APPLICABLE SPECIFICATIONS RELATED TO THE NATIVE GRASS, WILDFLOWER AND PLUG INSTALLATION IN THE DRAINAGE AREA.
- LANDSCAPE CONTRACTOR IS TO VERIFY THE LOCATION OF ALL UNDERGROUND UTILITIES (INCLUDING THOSE INDICATED ON THE PLAN) PRIOR TO INSTALLATION OF PLANT MATERIAL. UTILITIES CAN BE FLAGGED BY CALLING 811 OR 1-800-344-7233, OR ONLINE AT WWW.KANSASONECALL.COM. DAMAGE TO UTILITIES SHALL BE AVOIDED DURING THE COURSE OF WORK. THE LANDSCAPE CONTRACTOR IS RESPONSIBLE FOR REPAIRING ANY AND ALL DAMAGE TO UTILITIES, STRUCTURES, SITE APPURTENANCES, ETC. WHICH OCCUR AS A RESULT OF THE LANDSCAPE CONSTRUCTION OPERATIONS.
- SEEDING CONTRACTOR SHALL COORDINATE WITH THE MASS GRADING CONTRACTOR TO ENSURE THEY THOROUGHLY PREPARE THE TOP SOIL LAYER FOR LANDSCAPE MATERIAL INSTALLATION.
- SEED MIXES SHALL BE OBTAINED THROUGH STOCK SEED FARMS, MURDOCK, NEBRASKA (800) 759-1520, OR APPROVED EQUAL.

ALL SEED MIXES & CERTIFIED CLEAN PRAIRIE HAY MULCH DOCUMENTATION SHALL BE SUBMITTED TO DESIGN ENGINEER (MKEC) FOR REVIEW AT LEAST ONE MONTH PRIOR TO INSTALLATION. SUBMITTALS SHALL BE SENT TO KEVIN GRAHAM, kgraham@mkec.com.



GRADING PLANS FOR  
**BUFFALO GROVE ADDITION**  
 WICHITA, KANSAS

©2022  
 MKEC Engineering  
 All Rights Reserved  
 www.mkec.com  
 These drawings and their contents, including, but not limited to, all concepts, designs, & ideas are the exclusive property of MKEC Engineering (MKEC), and may not be used or reproduced in any way without the express consent of MKEC.

### SEEDING PLAN

PROJECT NO.	458-2022-085514	
DATE	NOV 2022	
SCALE	1" = 50'	
DESIGNED	DRAWN	CHECKED
KPG	MKEC	KPG
NO.	REVISION	DATE