

GENERAL NOTES:

1. The Contractor shall comply with all applicable safety regulations. All construction shall be completed following current City Standard Specifications and Special Provisions.

2. Contractor will be required to provide notice to utility companies a minimum of seventy-two (72) hours prior to any excavation, as follows:

Kansas One-Call 687-2470

The Contractor must notify the following in case of an emergency:

AT&T 1-800-246-8464
 Black Hills Energy 1-800-694-8989
 City of Wichita Water & Sewer 1-316-219-8921
 City of Wichita Stormwater 1-316-268-4090
 City of Wichita Traffic 1-316-268-4034
 Cox Communications 1-888-249-3530
 Kansas Gas Service 1-888-482-4950
 Energy 1-800-544-4857

3. Utility service lines, poles, etc. are to be adjusted as necessary by others prior to construction unless the plans specifically call for their adjustment by the Contractor or unless the plans specifically identify a utility to be adjusted by its owner during construction. Existing utilities and their location, as shown on the plans, represent the best information obtainable for design. The Contractor will be required to work around existing utilities within the right-of-way which do not conflict with proposed construction.

4. Rubble from the removal of miscellaneous structures and excess excavation which is to be wasted shall be disposed of on sites to be provided by the Contractor. These sites shall be approved by the Engineer as to suitability, appearance and site location. Locations, in the opinion of the Engineer, that will leave an unsightly appearance will not be approved. All disposal sites must be approved by the Kansas Department of Health and Environment. Material either stockpiled or disposed of in a flood plain will require a Kansas State Board of Agriculture permit. Any material dumped in waters of the United States or wetlands is subject to U.S. Corps. of Engineers permitting regulations. Any material buried or stockpiled beyond approved construction limits will require additional archaeological investigations unless buried in a previously approved borrow location.

5. Trees and shrubs in public right-of-way which are in direct conflict with proposed new construction shall be removed by the Contractor with the City Engineer's approval. Trees and shrubs which are not in direct conflict with proposed new construction shall be saved and protected from damage.

6. The Contractor shall give all property owners and/or tenants of developed property abutting the construction of this project a minimum of ten (10) days notice prior to start of construction.

7. The Contractor shall be responsible for preserving property irons. The Contractor will be required to re-establish any property irons which are damaged or destroyed by his construction operations. Such irons shall be re-established by a licensed land surveyor in accordance with state laws.

8. All elevations shown are NAVD88.

9. All stubs and capped pipes shall be located with green plastic tape in the same manner as risers.

10. Connecting to Existing Manholes:
 Prior to laying sewer lines using existing stubs in existing manholes, the Contractor shall expose and verify the elevation, grade and alignment of existing stubs and notify the Engineer of any deviation from the plans. Where the stub is unusable due to elevation grade or alignment, the Contractor shall remove the stub and plug the hole, and reshape the existing manhole invert to provide smooth flow. Where connection to an existing manhole that does not have an existing stub, the Contractor shall core cut into existing manhole wall to make connection using approved water stop gasket, and reshape the existing manhole invert to provide smooth flow. The cost of connect to existing manholes is incidental to the project.

11. Contractor shall limit the extent of trench open overnight and weekends to less than 50 feet.

12. Contractor shall provide positive drainage away from all manhole covers.

13. The Contractor shall prevent any construction debris from entering the existing sanitary sewer during construction.

14. The Contractor shall protect from damage and support existing utilities through construction as approved by the utility owner and the Engineer at the contractor's expense.

15. Contractor shall grade around exposed manholes at a 1:1 slope. Manholes set lower than existing grade shall have a 9" berm constructed around manhole to prevent infiltration into sanitary sewer system. Cost of dirt, labor, equipment, etc. to be incidental to cost of manhole. Easements shall be graded with the street improvement project as part of the mass grading plan.

16. All of University Ave. R/W disturbed during construction shall be seeded and mulched as follows:

Seed -- Kansas Premium Fescue Blend; 8 lbs. PLS/1000 Sq. Ft.
 Annual Rye grass; 3 lbs./1000 Sq. Ft.
 Fertilizer -- 12-24-12 Ratio; 45 lbs./Ac.
 Mulch -- 2 Tons Prairie Hay/Ac.

All other areas disturbed during construction are to be seeded as follows:

Seed -- Rye grass; 5 lbs./1000 Sq. Ft.

All costs associated with seeding including mobilization, preparation of ground, seeding, fertilizing, mulching, etc. shall be included in the L.S. bid item "Seeding".

An additional bid item for "Seeding, Temporary" has been included and may be used at the discretion of the design engineer. Temporary seed shall be Annual Rye at 5 lbs./1000 Sq. Ft. unless otherwise noted and shall be planted when permanent seed or sod cannot be used due to seasonal limitations. If the "Seeding, Temporary" bid item is not used, 100% of the pay item will be deducted from the contract. All costs associated with temporary seeding including mobilization, preparation of ground, seeding, etc., shall be included in the L.S. bid item "Seeding, Temporary".

17. All existing and proposed erosion control measures including silt fencing, erosion control mat, straw bales, inlet barriers, and const. entrance shall be maintained throughout construction by the contractor and until project is accepted by the City of Wichita. The on-site engineer shall complete weekly reports on the status of erosion control measures. The contractor shall be required to comply with maintenance and/or replacement of erosion control measures as determined by the on-site engineer until project is accepted by City of Wichita. Maintenance and/or replacement of erosion control measures to be paid by L.S. bid item "Maintain Existing BMPs".

18. All excess excavation shall remain on-site and shall be stockpiled or spread at a location determined by the engineer.

19. Contractor shall contact Engineer for availability and location of contractor borrow.

20. The developer for this project is Jeffery & Kimberly Jones, Tru-Ridge, LLC (316) 247-2236.

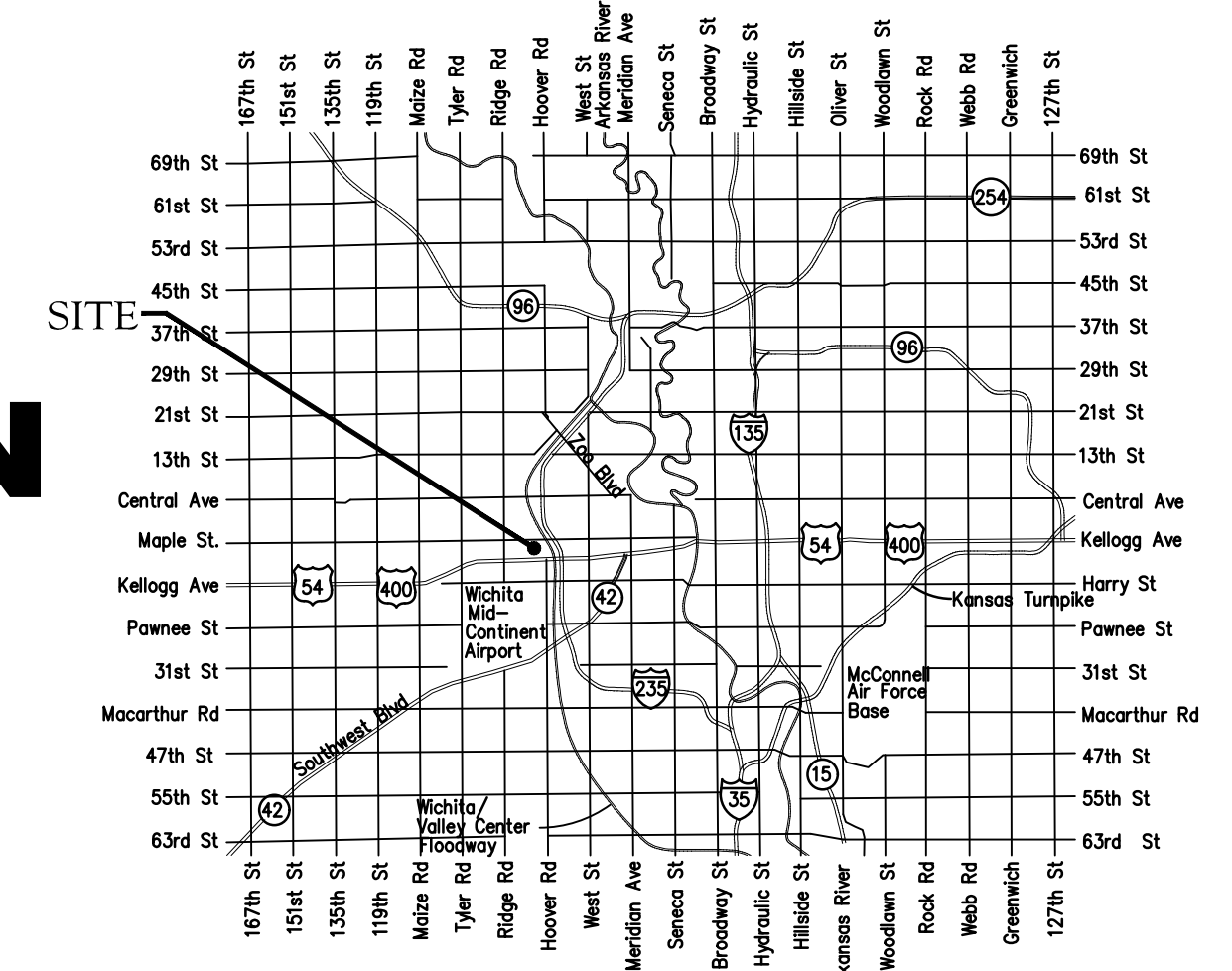
SANITARY SEWER IMPROVEMENTS to serve TRU-BUILDING ADDITION

CITY OF WICHITA, KANSAS

Gary Janzen, P.E. City Engineer
 Project Number 468-2020-033946

Org Code 47265821

Munis Number E1137



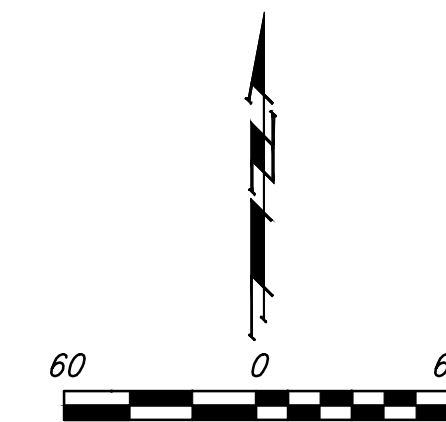
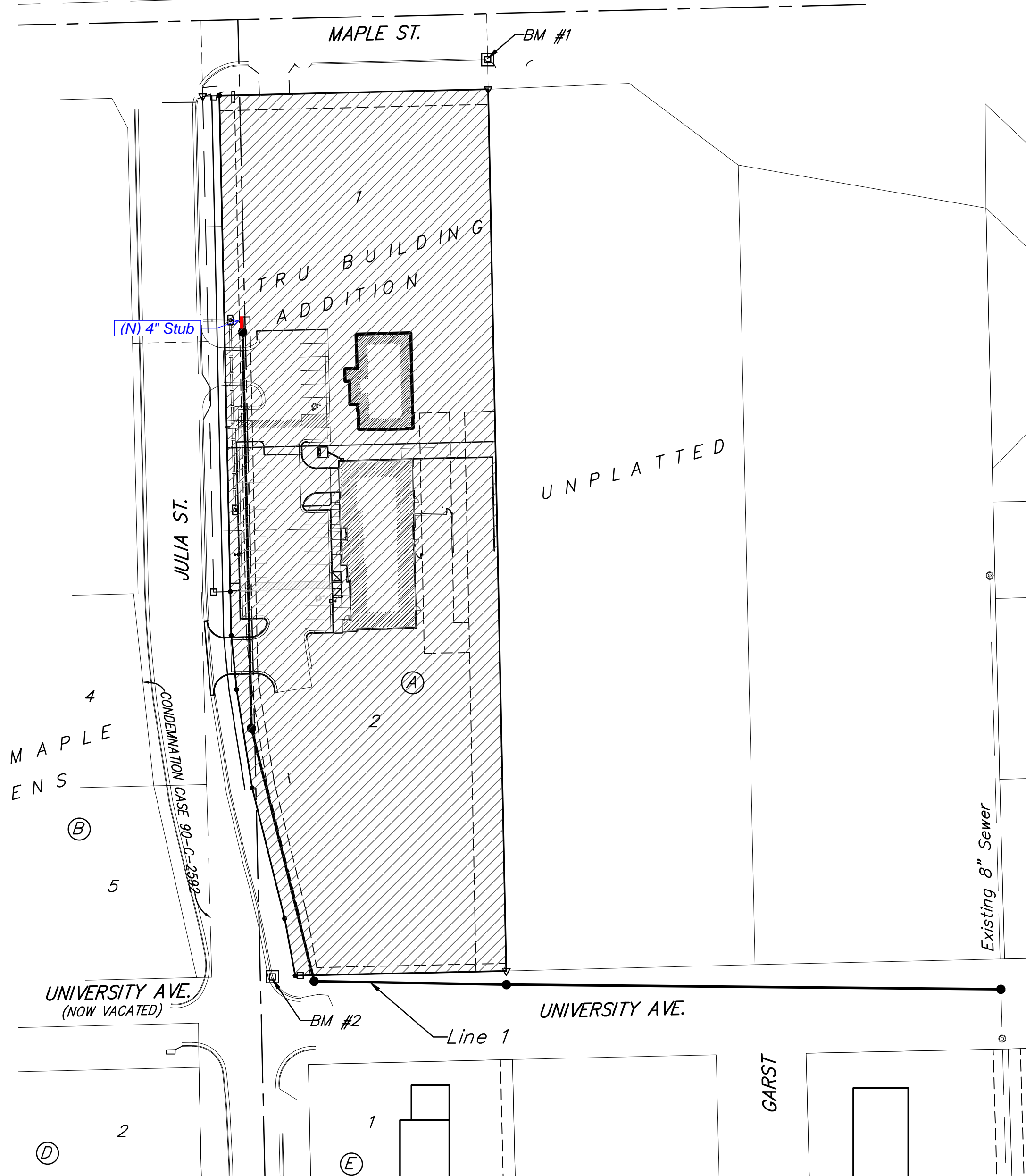
Vicinity Map

Benchmarks

BM #1: Square cut on top of curb south side of Maple St. west of drive east of NE corner of Tru-Building Addition.
 Elev. = 1308.53 (NAVD88)

BM #2: Square cut top of curb at north return at the NE corner of Julia St. and University.
 Elev. = 1304.92 (NAVD88)

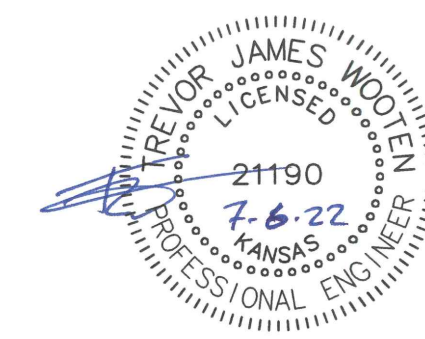
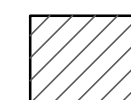
Dondlinger & Sons - Contractor
 S. Lowe - City of Wichita, Field Project Engineer
 T. Dvorak - City of Wichita, Inspector
 As-built
 Release Date (for connection purposes only): 12/13/2022
 Completion Date:
 pdf: 12/16/2022



Sheet Index

Title Sheet	1
Line 1	2-3
Erosion Control Plan	4
Precast SS Manhole Detail	5
Manhole Frame & Cover Detail	6
Erosion Control BMP Details	7-11
Coordinate Sheet	12
Copy of Plat	13

Benefit District



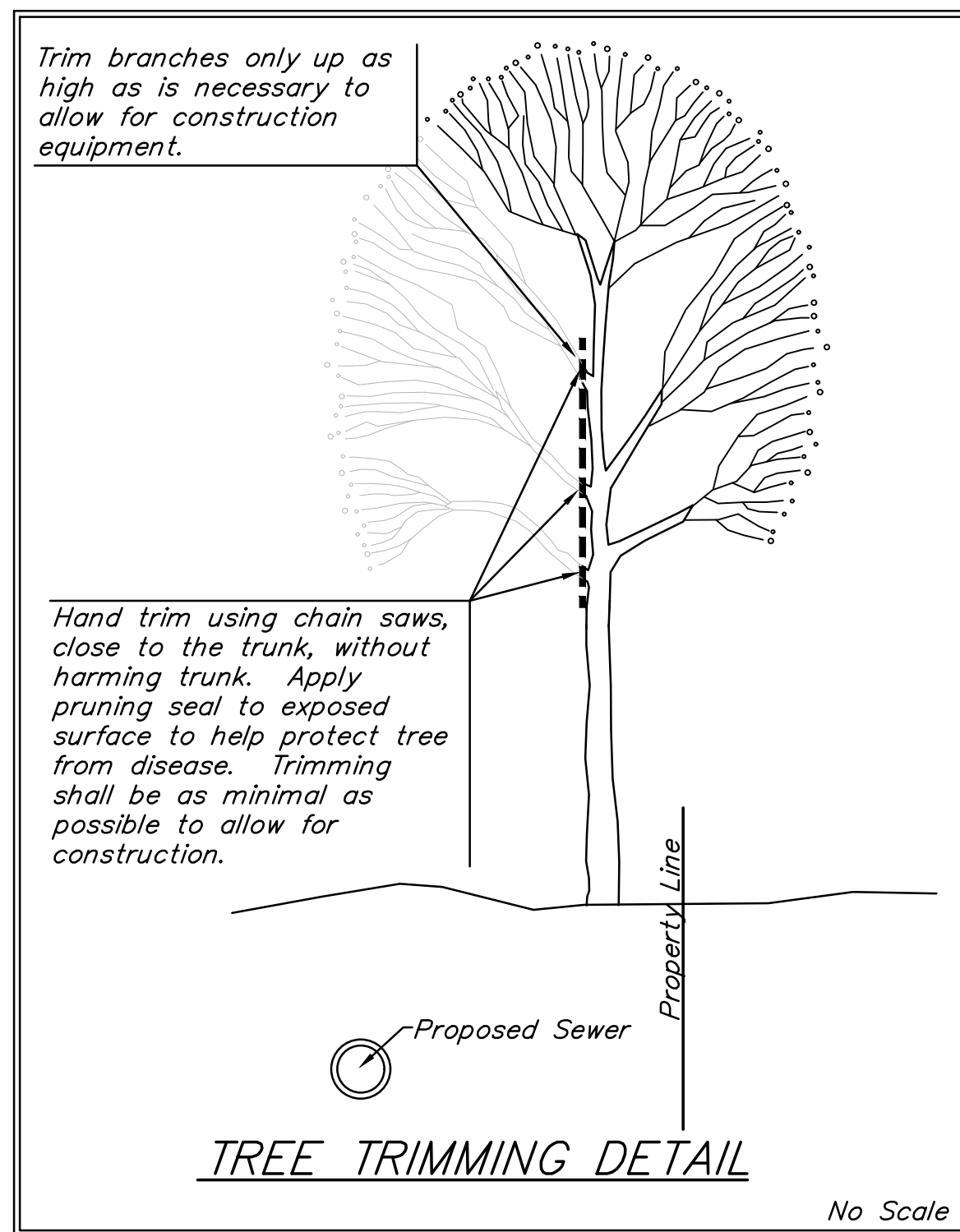
July 7, 2022

BAUGHMAN COMPANY
 315 Ellis St. Wichita, KS 67211 316-262-7271
 BaughmanCo.com

BENCHMARKS:

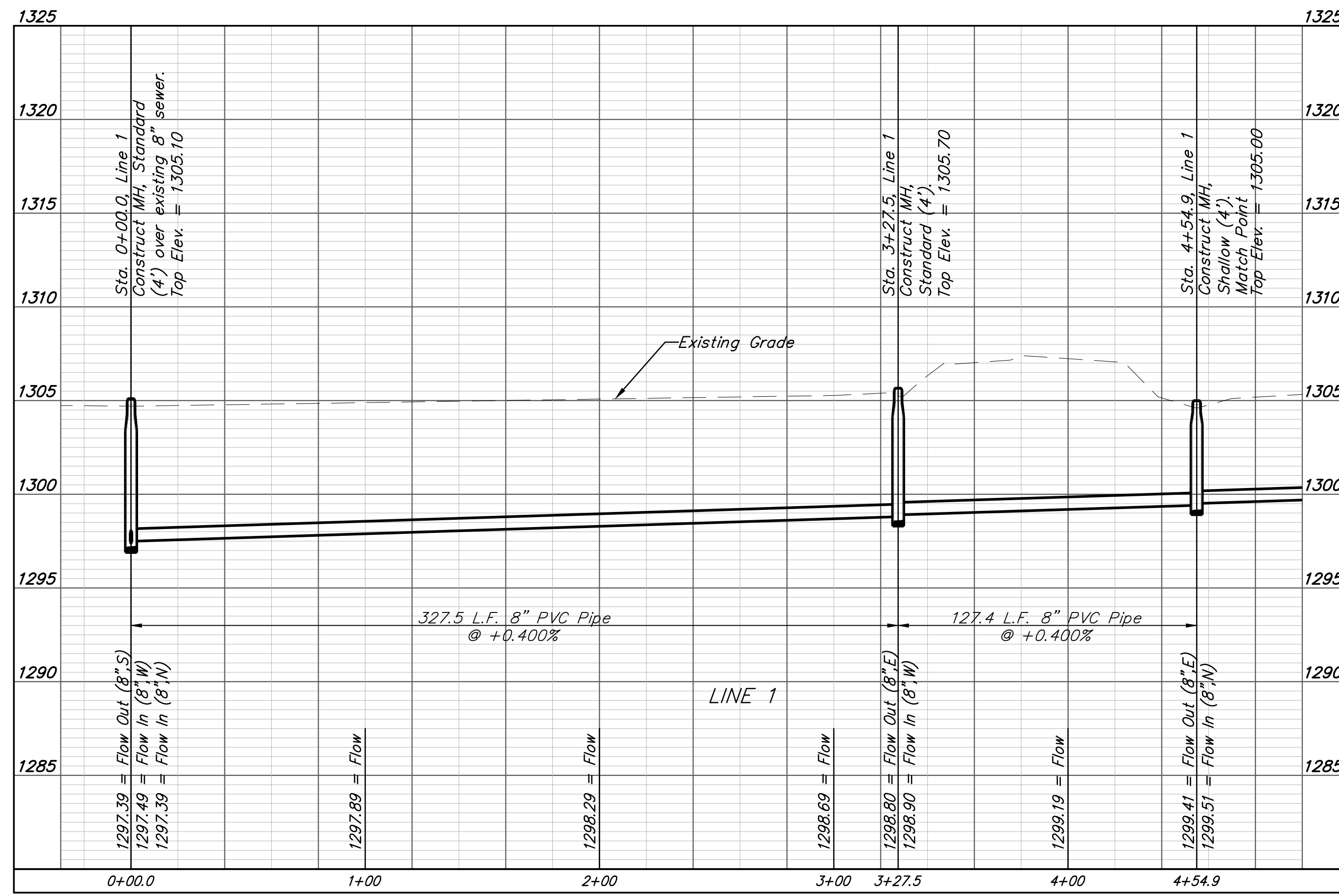
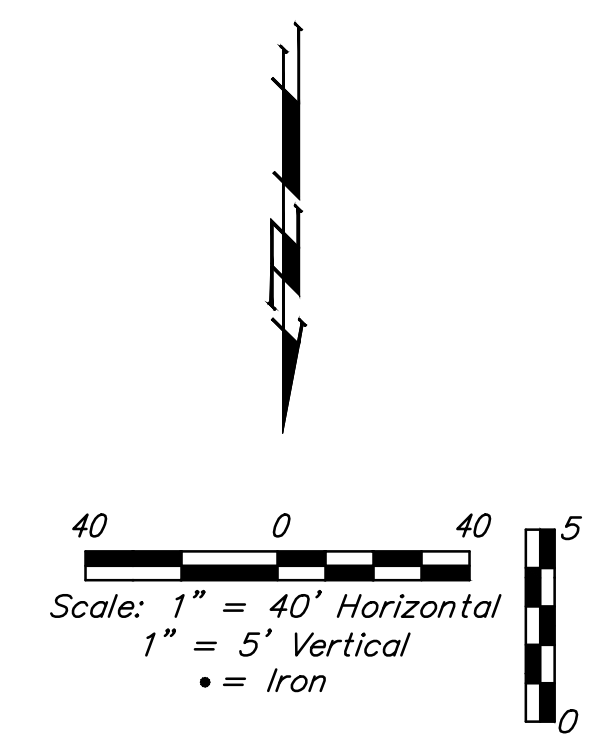
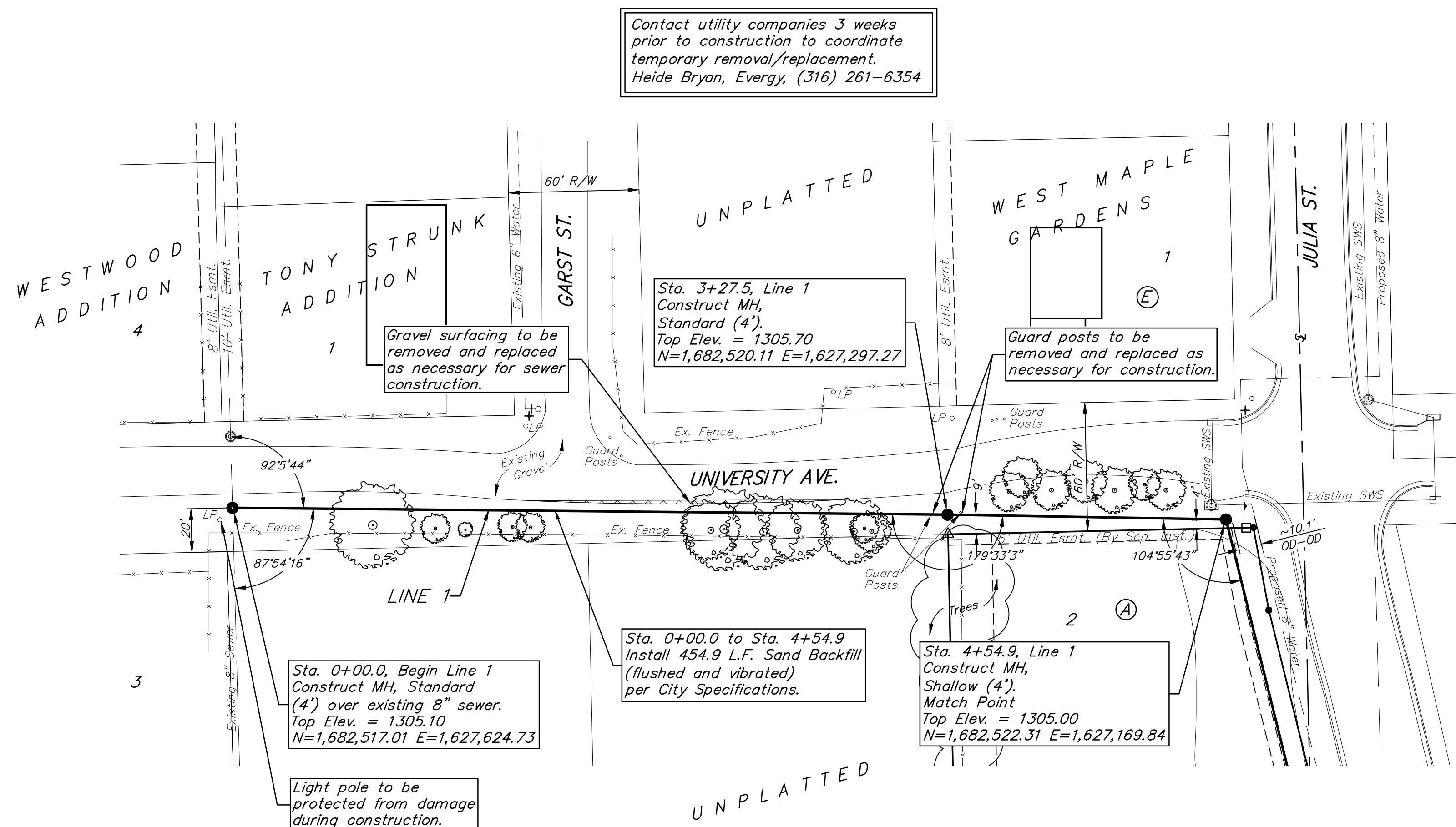
BM #1: Square cut on top of curb south side of Maple St, west of drive east of NE corner of Tru-Building Addition.
Elev. = 1308.53 (NAVD88)

BM #2: Square cut top of curb at north return at the NE corner of Julia St. and University.
Elev. = 1304.92 (NAVD88)



Existing trees shall be trimmed ONLY with approval of the Developer. Trimming of overhanging limbs will be permitted only with chainsaws. Trees not in direct conflict with new construction shall remain and be protected from damage. Prior to the start of construction, the Contractor shall schedule an on-site meeting with the Developer to discuss treed areas. All trimming shall be included in bid item "Site Clearing".

Contractor shall verify elevation and alignment of existing manhole prior to construction and notify Engineer of any discrepancy.



REVOR JAMES WOYEN
LICENSED
21190
7-6-22
KANSAS
PROFESSIONAL ENGINEER

BAUGHMAN COMPANY
315 Ellis St.
Wichita, KS 67211
316-262-7271
BaughmanCo.com

TRU-BUILDING ADDITION

LINE 1

SANITARY SEWER IMPROVEMENTS

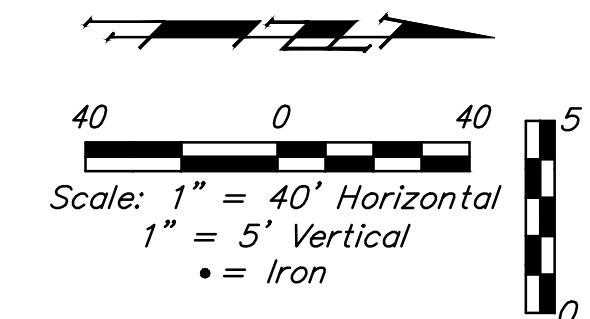
PROJECT NUMBER:

DESIGN: TJW DRAWN: TMS
DATE: July 7, 2022

SHEET 2 OF 12

File: E:\Projects\TRU-Building PUD 19-09-P482\Engineering\Phase 1\SSS\sewer.dwg

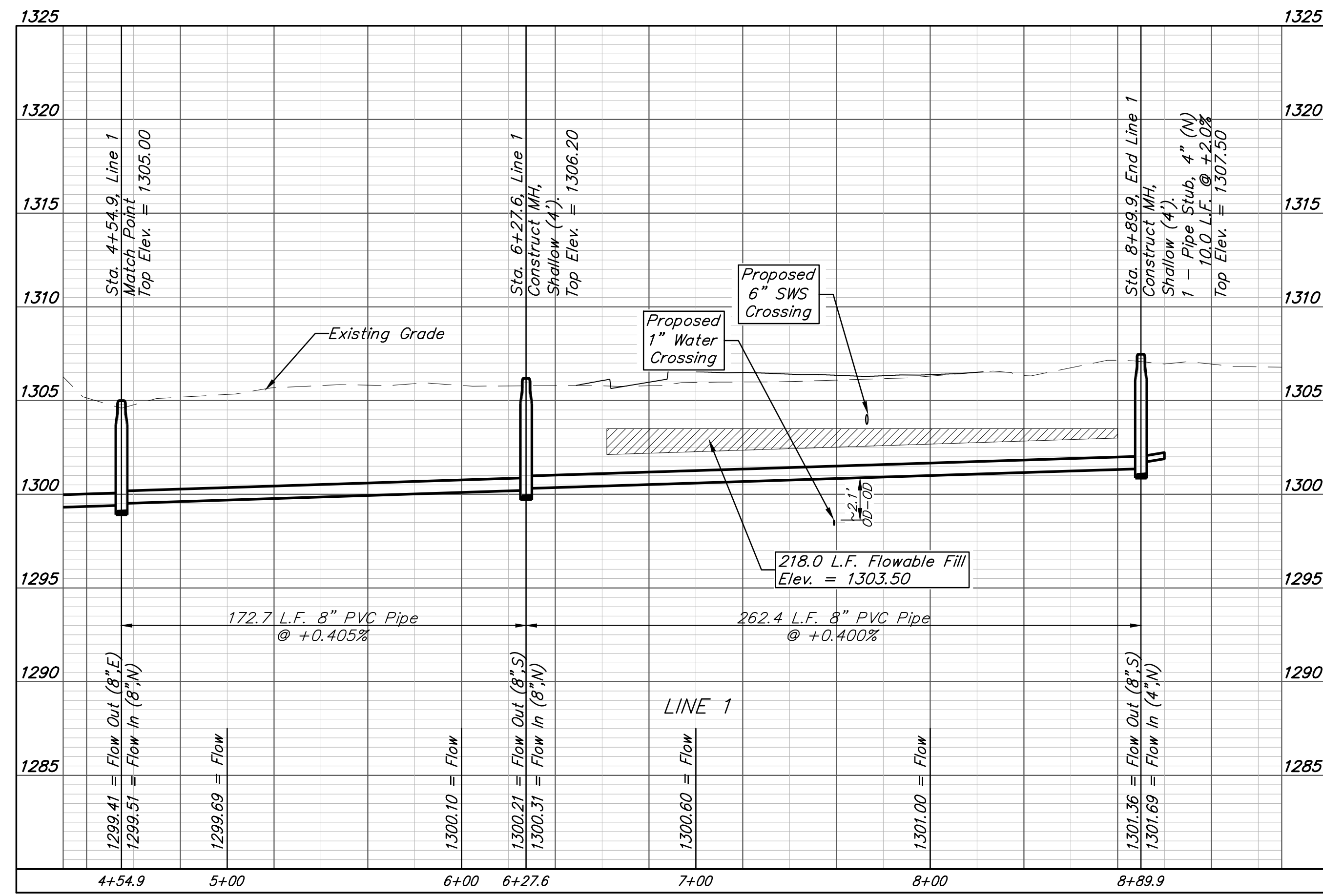
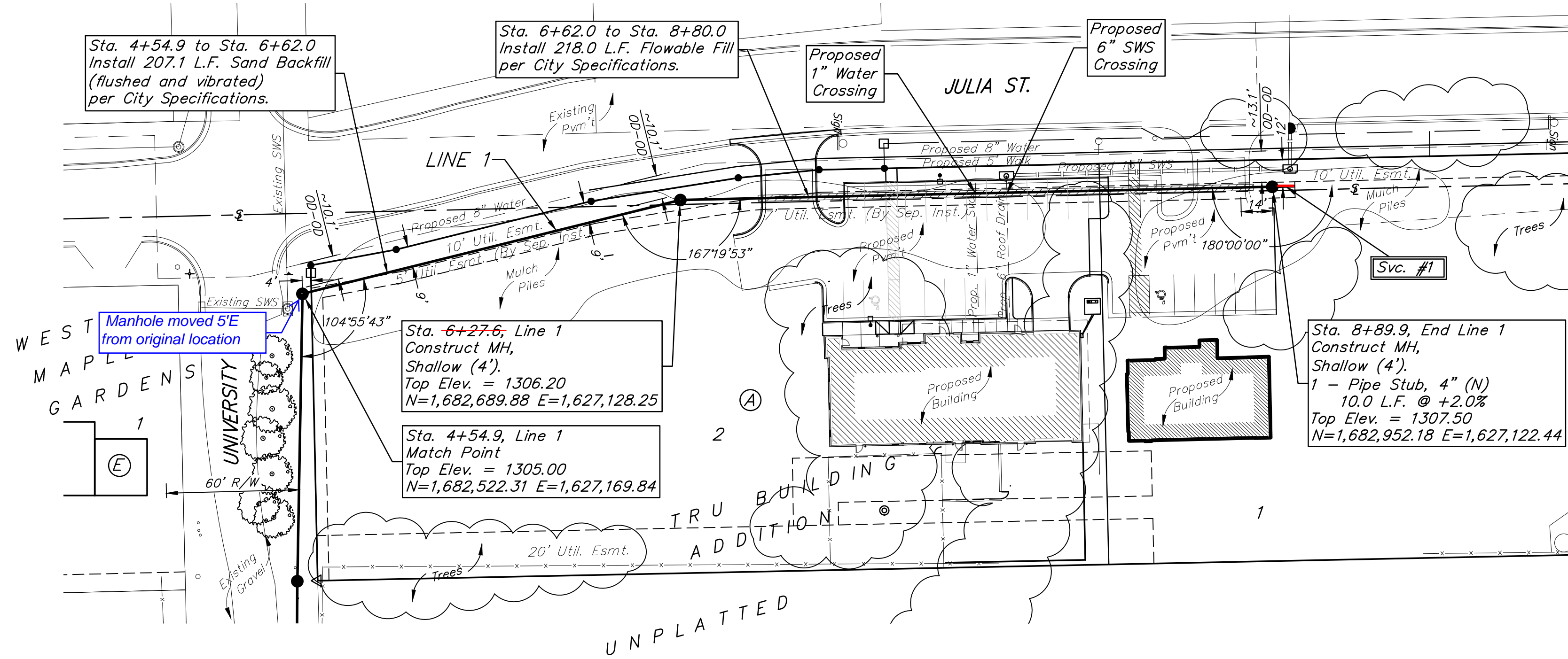
BENCHMARKS:
 BM #1: Square cut on top of curb south side of Maple St, west of drive east of NE corner of Tru-Building Addition. Elev. = 1308.53 (NAVD88)
 BM #2: Square cut top of curb at north return at the NE corner of Julia St. and University. Elev. = 1304.92 (NAVD88)



SEWER SERVICE TABLE

NUMBER	TYPE	LOCATION			FOR INFORMATION ONLY		
		LOT NO.	BLOCK NO.	LINE NO.	STATION \ DIRECTION	APPROXIMATE LENGTH 4" PIPE	
						VERTICAL	HORIZONTAL
1	4" Stub	1	A	1	8+89.9/-	-	10.0'

NOTE: Vertical Riser Pipe shall be extended to 2' minimum above ground water elevation and 4' maximum below proposed ground elevation.



BAUGHMAN COMPANY
 315 Ellis St.
 Wichita, KS 67211
 316-262-7271
 BaughmanCo.com

TRU-BUILDING ADDITION

LINE 1

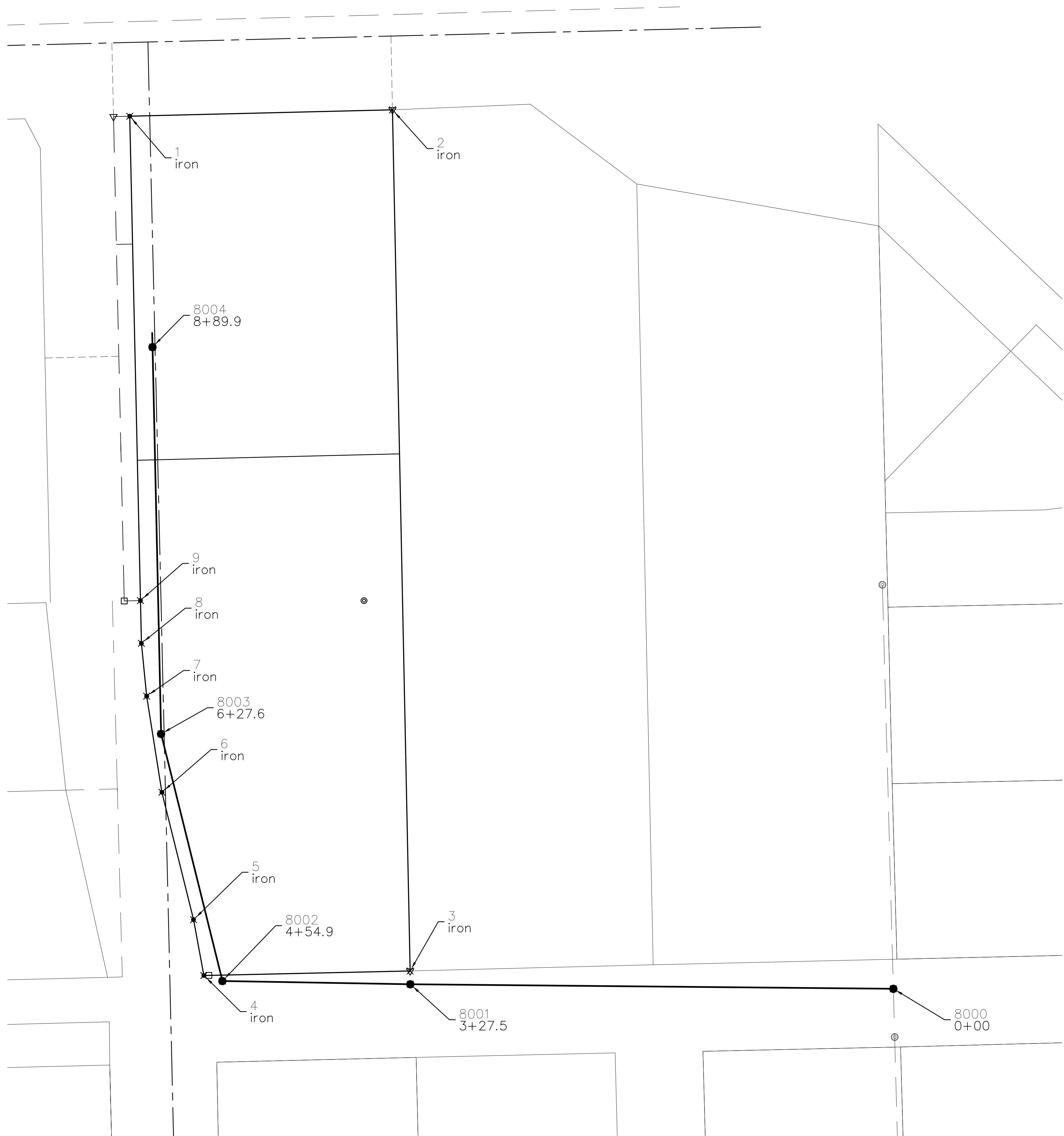
SANITARY SEWER IMPROVEMENTS

PROJECT NUMBER:

DESIGN: TJW DRAWN: TMS
 DATE: July 7, 2022

SHEET **3** OF **12**

File: E:\Projects\TRU-Building PUD 19-09-P482\Engineering\Phase 1\SSS\sewer.dwg

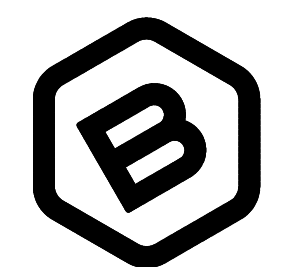
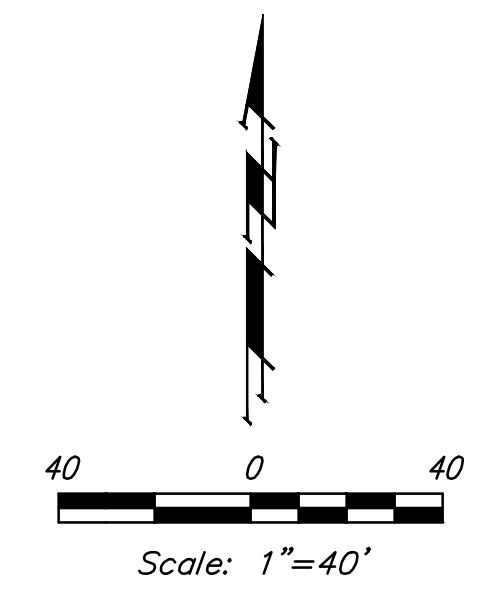


IRONS

Point Table			
Point #	Northing	Easting	Raw Description
1	1683108.68	1627106.97	iron
2	1683113.04	1627285.10	iron
3	1682529.11	1627297.08	iron
4	1682526.04	1627157.26	iron
5	1682563.89	1627150.24	iron
6	1682650.27	1627128.81	iron
7	1682715.45	1627118.46	iron
8	1682751.28	1627114.89	iron
9	1682780.27	1627114.24	iron

SANITARY SEWER

Point Table			
Point #	Northing	Easting	Raw Description
8000	1682517.01	1627624.73	0+00
8001	1682520.11	1627297.27	3+27.5
8002	1682522.31	1627169.84	4+54.9
8003	1682689.88	1627128.25	6+27.6
8004	1682952.18	1627122.44	8+89.9



**BAUGHMAN
COMPANY**

315 Ellis St.
Wichita, KS 67211
316-262-7271
BaughmanCo.com

TRU-BUILDING ADDITION

**COORDINATE
SHEET**

SANITARY SEWER
IMPROVEMENTS

PROJECT NUMBER:

DESIGN: DRAWN:

DATE: July 11, 2022

SHEET **12** OF **13**

File: E:\Projects\TRU-Building PUD 19-09-P482\Engineering\Phase 1\SSSewer.dwg