

STATE	PROJECT NO.	YEAR	SHEET NO.	TOTAL SHEETS
KANSAS	472-85296	2020	1	262

# WEST STREET IMPROVEMENTS FROM HARRY TO KELLOGG CITY OF WICHITA, KANSAS

GARY JANZEN, P.E. – CITY ENGINEER

C.O.W. PAVING PROJ. NO. 472-85296

O.C.A. No. 707106

C.O.W. WATER PROJ. NO. 448-2020-005520

O.C.A. No. W5018

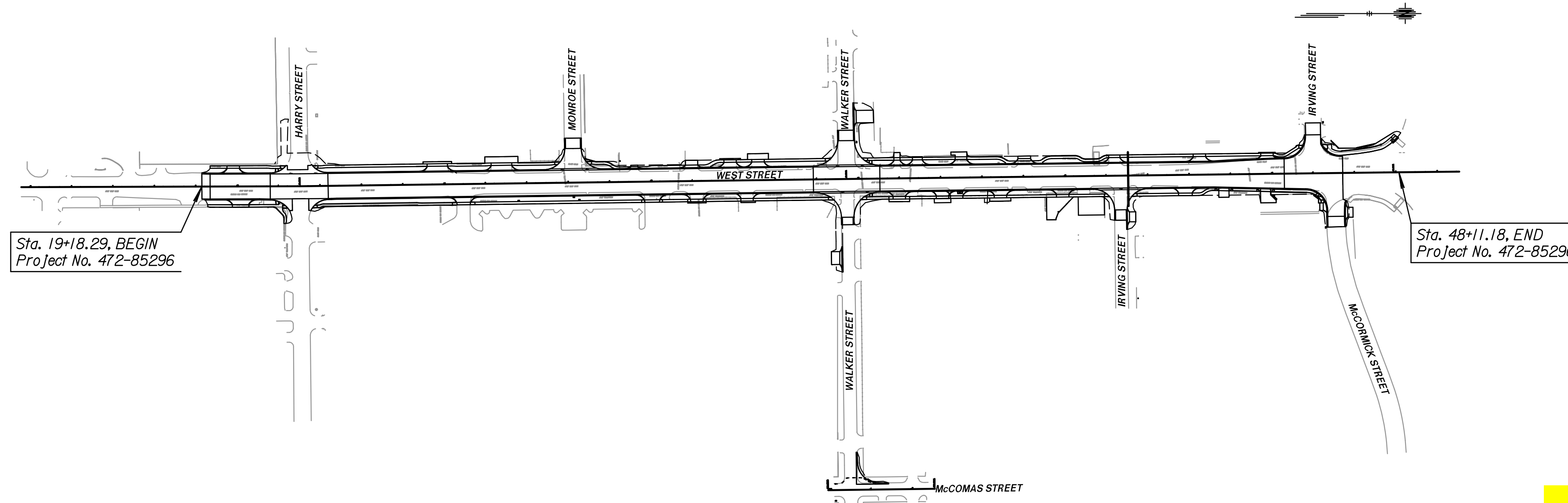
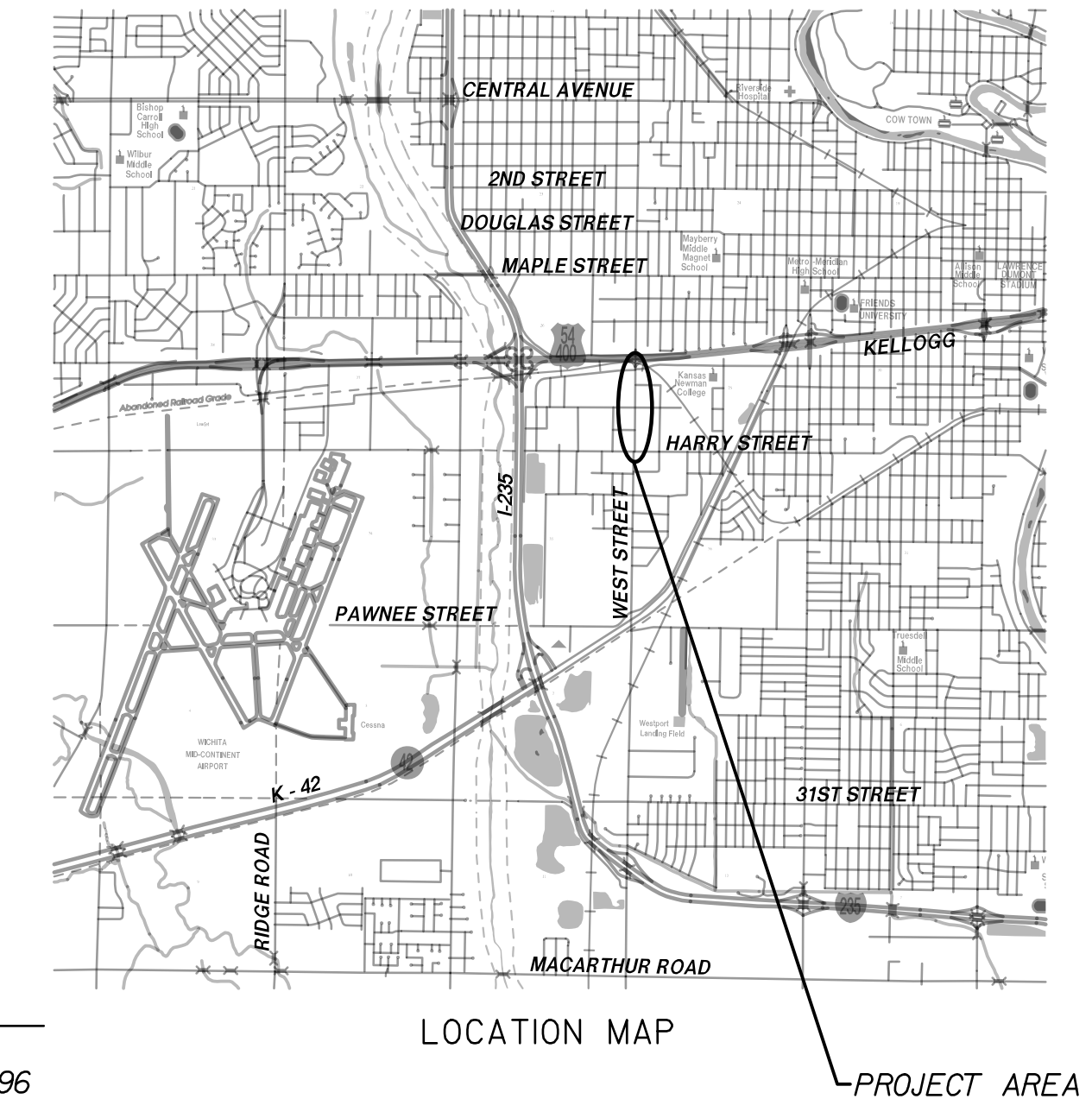
C.O.W. SAN. SEWER PROJ. NO. 468-2020-005517

O.C.A. No. S0004

### INDEX OF SHEETS

1	Title Sheet
2	General Notes
3	Coordinate & Geometric Data
4 - 5	Typical Sections
6 - 12	Proposed Plan Sheets
13 - 25	Storm Sewer Plan & Profile Sheets
26	Schedule of Storm Sewer
27 - 34	Inlet Standards
35 - 37	Manhole Details
38 - 39	Drainage Details
40 - 47	Joining Plan Sheets
48 - 49	Driveway Details
50	Wheelchair Ramp Details
51	Curb & Gutter and Brick Crosswalk Details
52 - 55	Concrete Pavement Details
56	Retaining Wall Details
57	Fence Details
58 - 61	Erosion Control Details
62 - 63	Summary of Quantities
64 - 160	Construction Phasing Plans
161 - 176	Temporary Traffic Signal Details
177 - 182	Traffic Control Standards
183 - 191	Pavement Marking & Signing Plans
192 - 196	Pavement Marking & Signing Details
197 - 199	Traffic Signal Plans Harry & West Street
200 - 202	Traffic Signal Plans Walker & West Street
203 - 209	Traffic Signal Details
210 - 213	Communication Duct Bank Plan
214 - 215	Sanitary Sewer System Details
216	Sanitary Sewer System Plan & Profile Sheet
217 - 220	Water System Details
221	Water System General Notes & Summary of Quantities
222	Water System Coordinate Control Data
223 - 229	Water System Plan & Profile Sheets
230 - 262	Cross Sections: West Street

- GRADING
- CONCRETE PAVEMENT
- ASPHALT PAVEMENT
- STORM SEWER
- PAVEMENT MARKING
- SIGNING
- TRAFFIC SIGNALIZATION
- SEEDING/SODDING
- ITS COMMUNICATION



### DESIGN DESIGNATION

AADT (2015)	=	16,175
AADT (2045)	=	27,219
V	=	40 MPH
C of A	=	NONE
LATERAL OFFSET	=	6.0 FT

TRAFFIC SHALL BE CARRIED THROUGH CONSTRUCTION AT ALL TIMES ON EXISTING ALIGNMENTS.

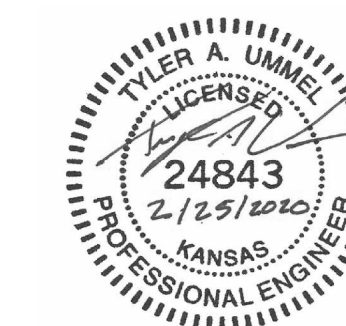
EXISTING ALIGNMENTS ARE TO BE SIGNED AND MAINTAINED BY THE CONTRACTOR

Comejo & Sons - Contractor  
K. Kerns - City of Wichita, Field Project Engineer  
J. Curtis - Transystem, Inspector  
As-built  
Release Date: 3/26/2021  
Completion Date:  
: apr 12/1/2022

### CONVENTIONAL SIGNS

COUNTY LINE	.....	CENTER LINE OF PROJECT	----- 50 1
CITY LIMITS	.....	TERRACE	.....
STATE OR NATIONAL LINE	.....	CULVERTS	.....
TOWNSHIP, SECTION or GRANT LINE	.....	DROP INLET & STORM SEWER	.....
PROPERTY LINE	.....	ACCESS CONTROL	.....
HIGHWAY FENCE	.....	POWER POLE	.....
EXISTING FENCE	.....	TELEPHONE POLE	.....
GUARD FENCE	.....	MARSH	.....
CONSTRUCTION LIMITS	.....	HEDGE	.....
RIGHT OF WAY LINE	.....	TREES	.....
TRAVELED WAY	.....	PROFILE ELEVATION	.....
RAILROADS	.....	STREAM or CREEK	.....

GROSS LENGTH OF PROJECT	2,892.89 FT.		
EXCEPTIONS	0.00 FT.		
NET LENGTH OF PROJECT	2,892.89 FT.	0.55 MILES	
NET LENGTH OF BRIDGES	0.00 FT.	0.00 MILES	
NET LENGTH OF ROAD	2,892.89 FT.	0.55 MILES	



PREPARED BY



245 NORTH WACO  
SUITE 222  
WICHITA, KANSAS 67202  
PHONE: 316-303-3000  
FAX: 316-462-5629

Batson Properties  
1005 S. West St  
Wichita, KS 67213

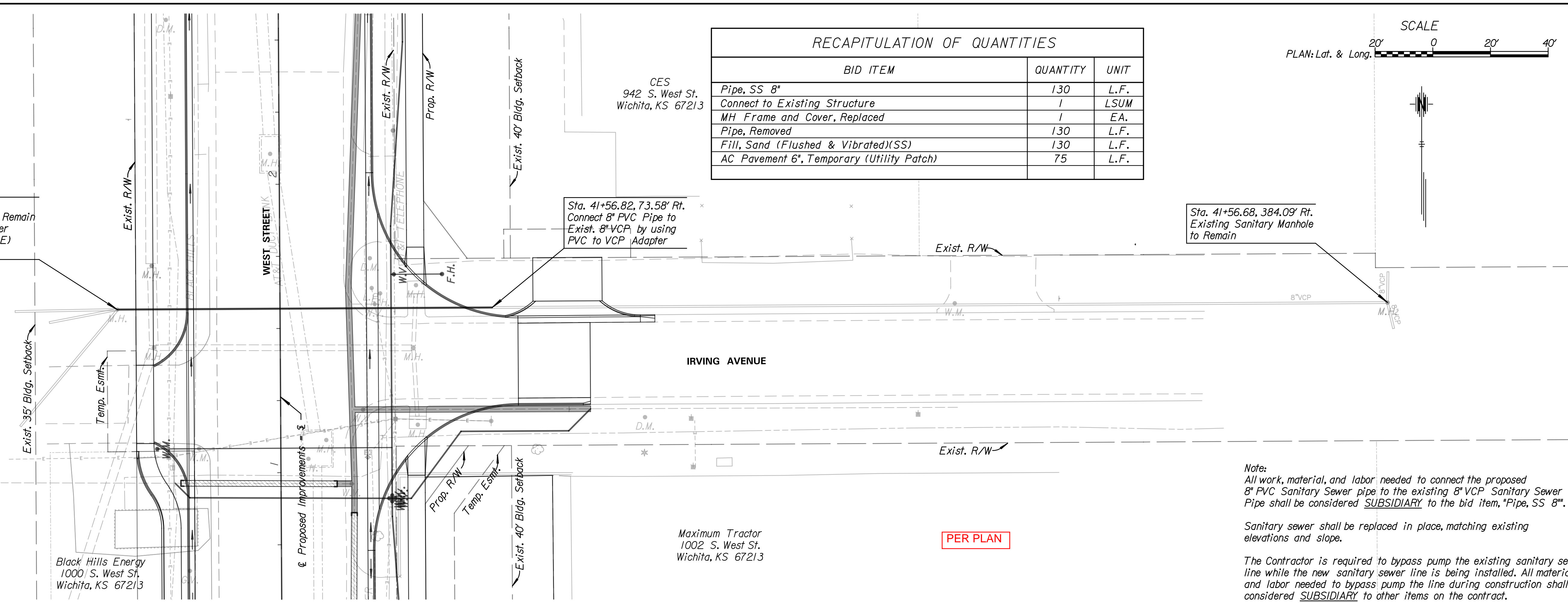
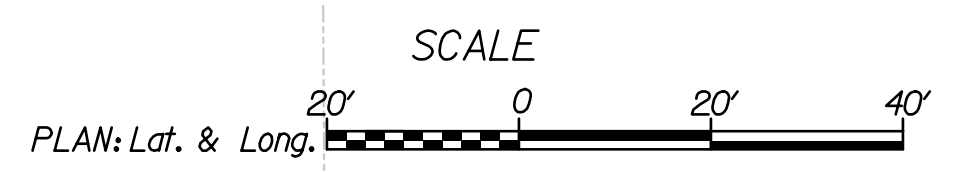
Sta. 41+56.88, 56.42' Lt.  
Exist. Sanitary Manhole to Remain  
Install MH Frame and Cover  
Remove 130 L.F. 8" VCP (E)  
Install 8" x 130.0' PVC (E)

Black Hills Energy  
1000 S. West St.  
Wichita, KS 67213

CES  
942 S. West St.  
Wichita, KS 67213

Maximum Tractor  
1002 S. West St.  
Wichita, KS 67213

RECAPITULATION OF QUANTITIES		
BID ITEM	QUANTITY	UNIT
Pipe, SS 8"	130	L.F.
Connect to Existing Structure	1	LSUM
MH Frame and Cover, Replaced	1	EA.
Pipe, Removed	130	L.F.
Fill, Sand (Flushed & Vibrated)(SS)	130	L.F.
AC Pavement 6", Temporary (Utility Patch)	75	L.F.



Note:  
All work, material, and labor needed to connect the proposed 8" PVC Sanitary Sewer pipe to the existing 8" VCP Sanitary Sewer Pipe shall be considered SUBSIDIARY to the bid item, "Pipe, SS 8".

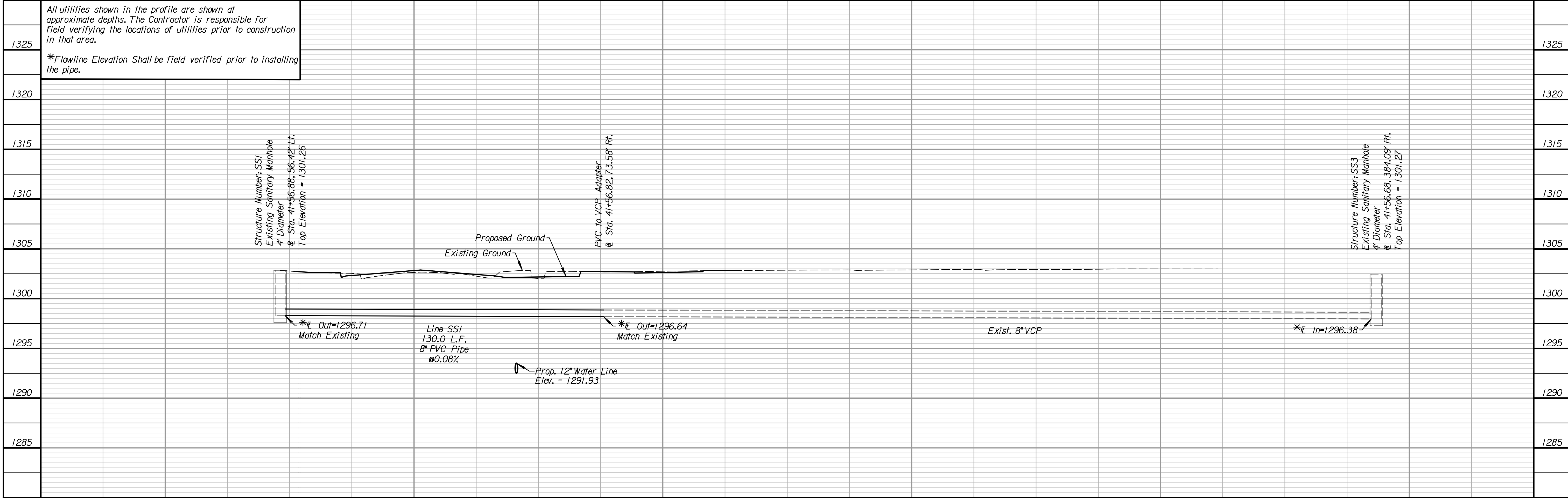
Sanitary sewer shall be replaced in place, matching existing elevations and slope.

The Contractor is required to bypass pump the existing sanitary sewer line while the new sanitary sewer line is being installed. All material and labor needed to bypass pump the line during construction shall be considered SUBSIDIARY to other items on the contract.

PER PLAN

All utilities shown in the profile are shown at approximate depths. The Contractor is responsible for field verifying the locations of utilities prior to construction in that area.

\*Flowline Elevation Shall be field verified prior to installing the pipe.



**Tran Systems**  
245 NORTH WACO  
SUITE 222  
WICHITA, KANSAS 67202  
PHONE: 316-303-3000  
FAX: 316-462-5629

Professional Engineer  
24843  
2/25/2020  
KANSAS

CONSULTANTS:

WEST STREET IMPROVEMENTS  
FROM HARRY TO KELLOGG  
WICHITA, KANSAS  
CITY OF WICHITA

REVISIONS:	MARK	DATE	DESCRIPTION

PROJ NO: 472-85296  
SCALE: 1"=20'  
DATE: 2/25/2020  
DESIGNED BY: TAU  
DRAWN BY: TAU  
CHECKED BY: MDB

SHEET TITLE:  
**WEST STREET  
SANITARY SEWER  
IMPROVEMENTS**

SHEET NO.  
**216**  
SHEET 216 OF 262

m:\m\er 2/25/2020 1:51:48 PM - c:\tran\systems\paw\local\tran\systems\paw\m\er\er\d519510\CC-SAN-M01-101.dgn