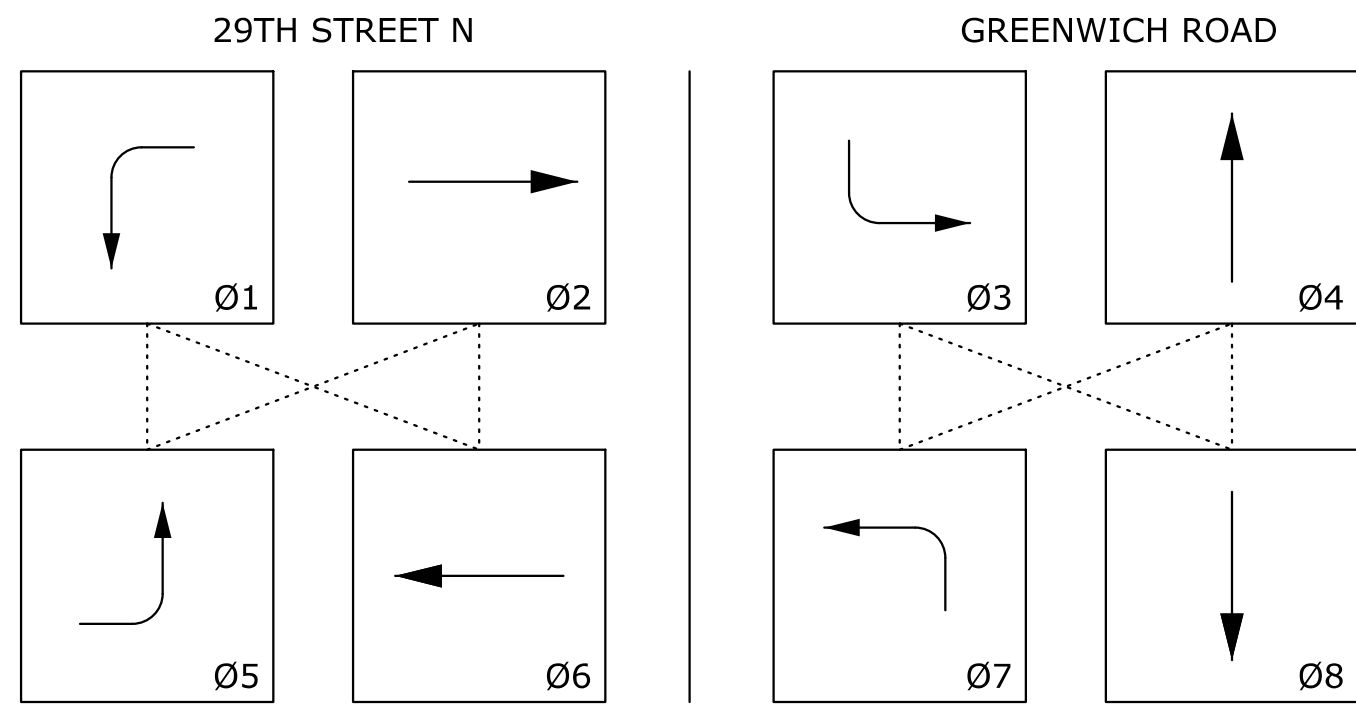


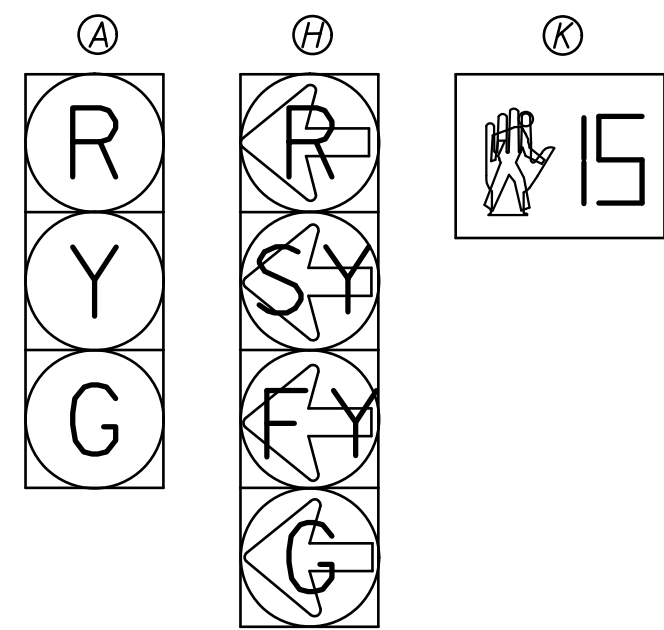
### PHASE DIAGRAM



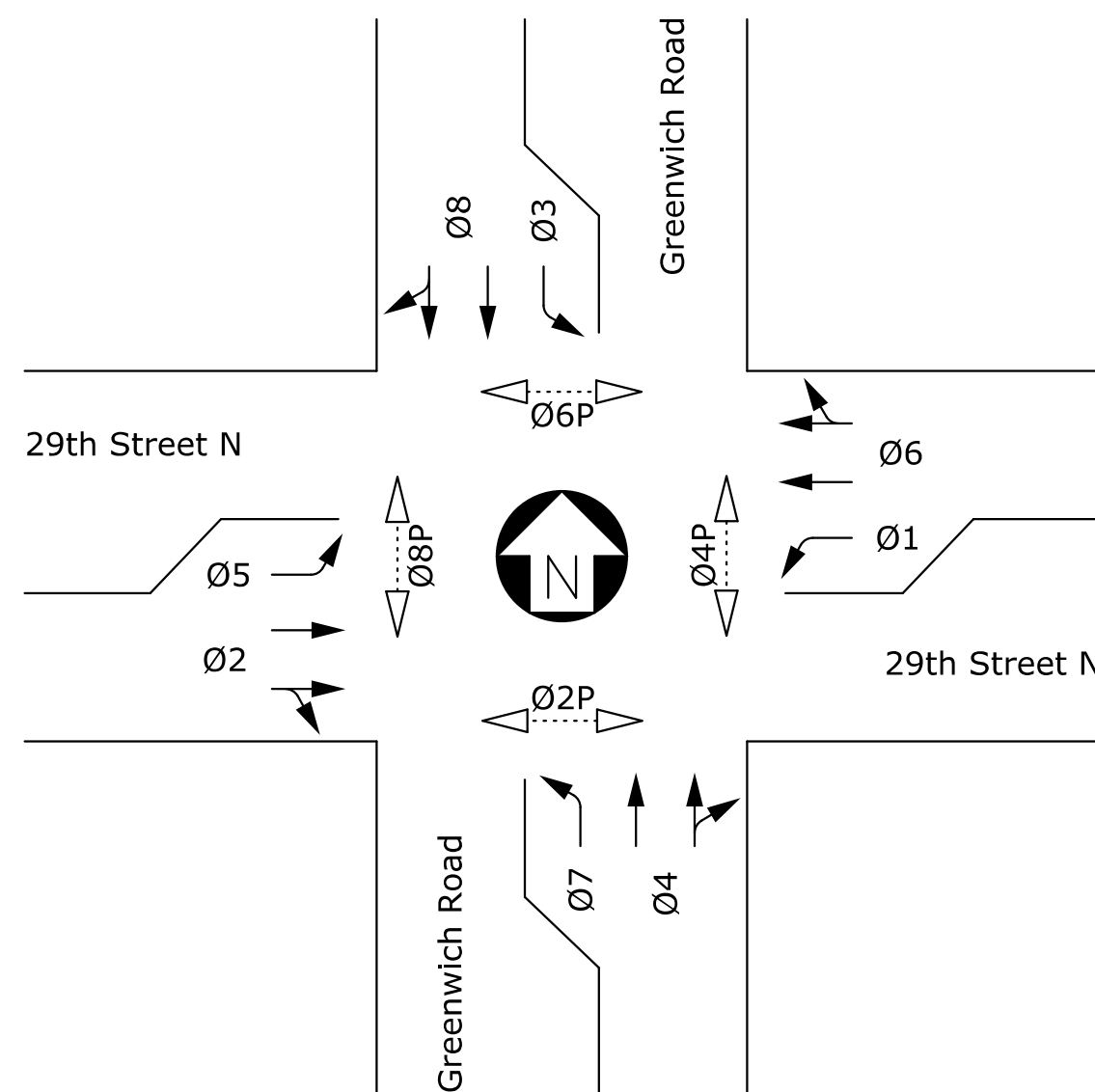
NOTE: DOTTED LINES CONNECTING PHASES INDICATE PHASES THAT CAN OCCUR CONCURRENTLY. PEDESTRIAN PHASE TO ONLY OCCUR AFTER PUSH BUTTON ACTIVATION.

### SIGNAL FACES

NOTE: ALL LENSES SHALL BE 12" L.E.D. PEDESTRIAN LENSES SHALL BE 16" AND BE COUNTDOWN SIGNALS.

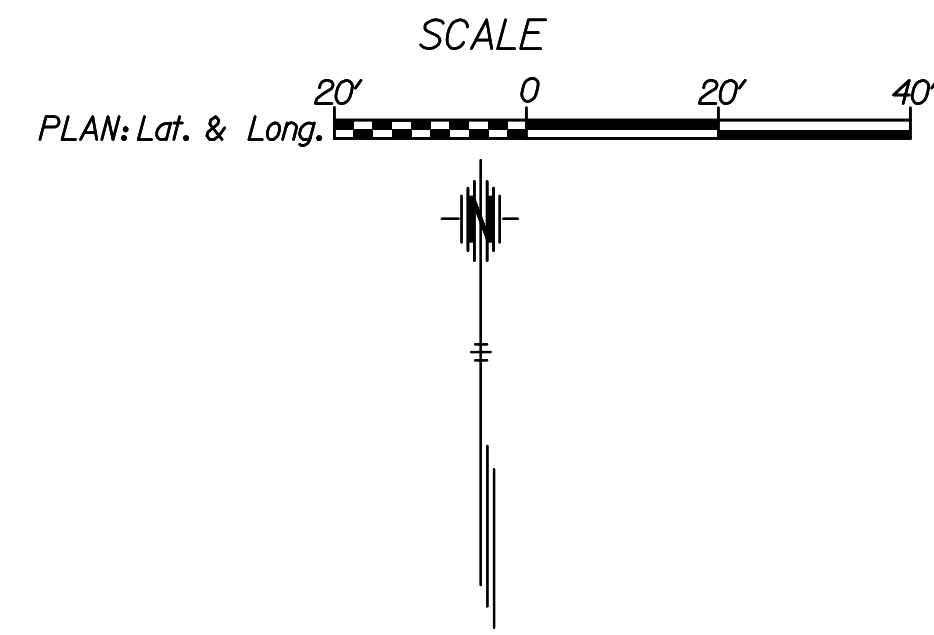


### SIGNAL PHASES



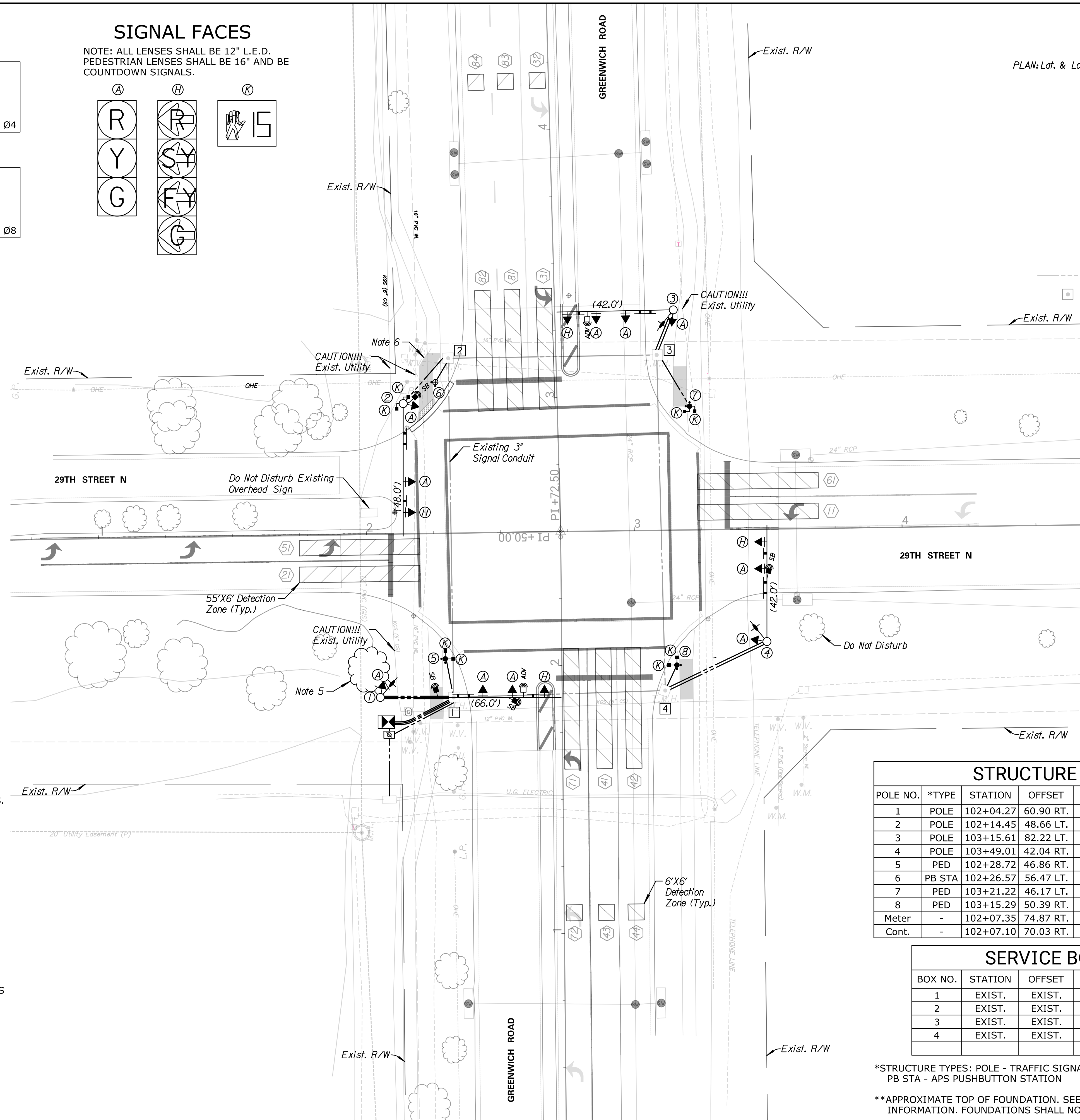
#### GENERAL NOTES:

- CONDUIT RUNS ARE APPROXIMATE & MAY BE FIELD ADJUSTED TO CLEAR OBSTRUCTIONS & FACILITATE WIRING, AS APPROVED BY THE ENGINEER. ALL CONDUIT RUNS SHALL BE STRAIGHT BETWEEN BOXES AND/OR FOUNDATIONS.
- EXISTING FEATURES & UTILITIES ARE SHOWN FROM AVAILABLE INFORMATION & SHOULD BE CONSIDERED APPROXIMATE ONLY. IT IS THE RESPONSIBILITY OF THE CONTRACTOR TO VERIFY UTILITIES & THEIR EXACT LOCATION PRIOR TO CONSTRUCTION.
- SEE "TRAFFIC SIGNAL INSTALLATION DETAIL SHEET" (TR-105) FOR SIGN SPACING AND ADDITIONAL DETAILS.
- SEE "PAVEMENT MARKING AND SIGNING SHEET" FOR NEW AND EXISTING PAVEMENT MARKING DETAILS.
- CONTRACTOR SHALL REMOVE THE ONE (1) EXISTING TREE IN THE SW CORNER AS SHOWN ON PLANS. ALL WORK SHALL BE SUBSIDIARY TO THE BID ITEM "TREE REMOVED, SMALL".
- REMOVE AND RECONSTRUCT EXISTING SIDEWALK AS SHOWN. FOR DETAILS SEE SHEET 13.
- INTERSECTION TWO-WAY STOP CONTROL SHALL REMAIN UNTIL THE NEW TRAFFIC SIGNAL IS IN-PLACE AND OPERATIONAL.
- CONTRACTOR SHALL ENSURE THAT ALL RECONSTRUCTED CONCRETE SIDEWALK AND RAMPS MEET ADA STANDARDS AND REQUIREMENTS.



### LEGEND

- EXISTING 3" CONDUIT
- EXISTING SERVICE BOX



### STRUCTURE LOCATIONS

| POLE NO. | *TYPE  | STATION   | OFFSET    | NORTHING   | EASTING    | **ELEV. |
|----------|--------|-----------|-----------|------------|------------|---------|
| 1        | POLE   | 102+04.27 | 60.90 RT. | 1704855.67 | 1685891.74 | 1388.97 |
| 2        | POLE   | 102+14.45 | 48.66 LT. | 1704965.37 | 1685900.26 | 1389.42 |
| 3        | POLE   | 103+15.61 | 82.22 LT. | 1705000.36 | 1686001.10 | 1389.23 |
| 4        | POLE   | 103+49.01 | 42.04 RT. | 1704876.53 | 1686036.08 | 1389.60 |
| 5        | PED    | 102+28.72 | 46.86 RT. | 1704870.07 | 1685915.98 | 1389.28 |
| 6        | PB STA | 102+26.57 | 56.47 LT. | 1704973.35 | 1685912.26 | 1389.18 |
| 7        | PED    | 103+21.22 | 46.17 LT. | 1704964.38 | 1686007.17 | 1389.60 |
| 8        | PED    | 103+15.29 | 50.39 RT. | 1704867.76 | 1686002.46 | 1389.30 |
| Meter    | -      | 102+07.35 | 74.87 RT. | 1704841.74 | 1685895.04 | 1388.11 |
| Cont.    | -      | 102+07.10 | 70.03 RT. | 1704846.58 | 1685894.71 | 1388.19 |

### SERVICE BOX LOCATIONS

| BOX NO. | STATION | OFFSET | NORTHING | EASTING | **ELEV. |
|---------|---------|--------|----------|---------|---------|
| 1       | EXIST.  | EXIST. | -        | -       | -       |
| 2       | EXIST.  | EXIST. | -        | -       | -       |
| 3       | EXIST.  | EXIST. | -        | -       | -       |
| 4       | EXIST.  | EXIST. | -        | -       | -       |

\*STRUCTURE TYPES: POLE - TRAFFIC SIGNAL POLE; PED - TRAFFIC SIGNAL PEDESTAL; PB STA - APS PUSHBUTTON STATION

\*\*APPROXIMATE TOP OF FOUNDATION. SEE STANDARDS AND SPECS FOR ADDITIONAL INFORMATION. FOUNDATIONS SHALL NOT CREATE A "LOW AREA".

**Tran Systems**  
 245 NORTH WACO  
 SUITE 222  
 WICHITA, KANSAS 67202  
 PHONE: 316-303-3000  
 FAX: 316-462-5629

CONSULTANTS:

29TH STREET N & GREENWICH ROAD  
 TRAFFIC SIGNALIZATION  
 WICHITA, KANSAS

| REVISIONS: | MARK | DATE | DESCRIPTION |
|------------|------|------|-------------|
|            |      |      |             |

PROJ NO: 472-085773  
 SCALE: 1:20  
 DATE: 12/20/2022  
 DESIGNED BY: SSP  
 DRAWN BY: SSP  
 CHECKED BY: SGE

SHEET TITLE:  
**TRAFFIC SIGNAL PLAN SHEET**

SHEET NO.  
**3**  
 SHEET 3 OF 17