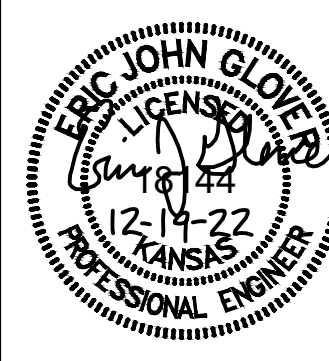




© 2021 GARVER, LLC
 THIS DOCUMENT, ALONG WITH THE IDEAS AND DESIGNS CONVEYED HEREIN, SHALL BE CONSIDERED INSTRUMENTS OF PROFESSIONAL SERVICE AND ARE PROPERTY OF GARVER, LLC. ANY USE, REPRODUCTION, OR DISTRIBUTION OF THIS DOCUMENT, ALONG WITH THE IDEAS AND DESIGN CONTAINED HEREIN, IS PROHIBITED UNLESS AUTHORIZED IN WRITING BY GARVER, LLC OR EXPLICITLY ALLOWED IN THE GOVERNING PROFESSIONAL SERVICES AGREEMENT FOR THIS WORK.

1995 Midfield Road
 Wichita, KS 67209
 (316) 264-8008



REV.	DATE	DESCRIPTION	BY



CITY OF WICHITA
 WICHITA, KANSAS
 47th Street Water Main
 Relocation

Spruce Ave
 Main

JOB NO.: 22T41003
 DATE: .
 DESIGNED BY: .
 DRAWN BY: .

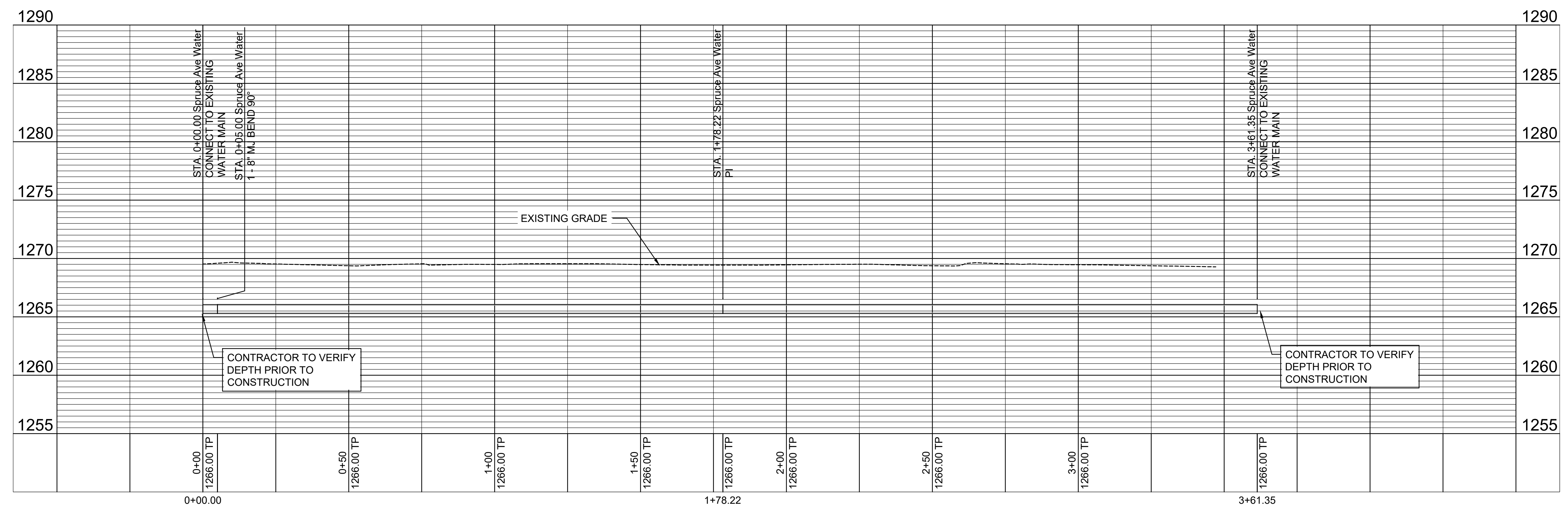
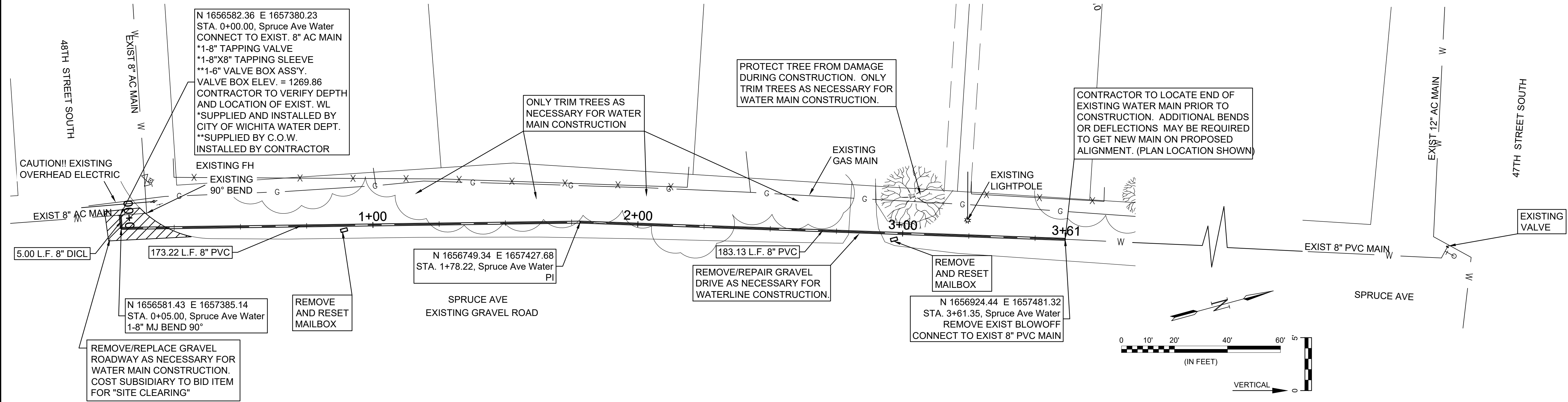
BAR IS ONE INCH ON ORIGINAL DRAWING
 0 1" IF NOT ONE INCH ON THIS SHEET, ADJUST SCALES ACCORDINGLY.

DRAWING NUMBER

SHEET NUMBER **5** OF **5**

THE COST FOR REMOVAL AND RESETTING OF MAILBOXES SHALL BE SUBSIDIARY TO "SITE CLEARING"

THE CONTRACTOR SHALL COORDINATE WITH THE US POSTAL SERVICE FOR DELIVERY OF MAIL WHILE MAILBOXES ARE REMOVED



File: L:\2022\22T41003 - 47th Street KTA Water Main Relocation\Drawings\C3D\Spruce Ave Water P-P.dwg, Last Save: 12/19/2022 3:55 PM, Last saved by: E.J.Glover
 Last plotted by: Glover, Eric J., Plot Style: ---, Plot Scale: 1:2,5849, Plot Date: 12/20/2022 8:09 AM, Plotter used: None