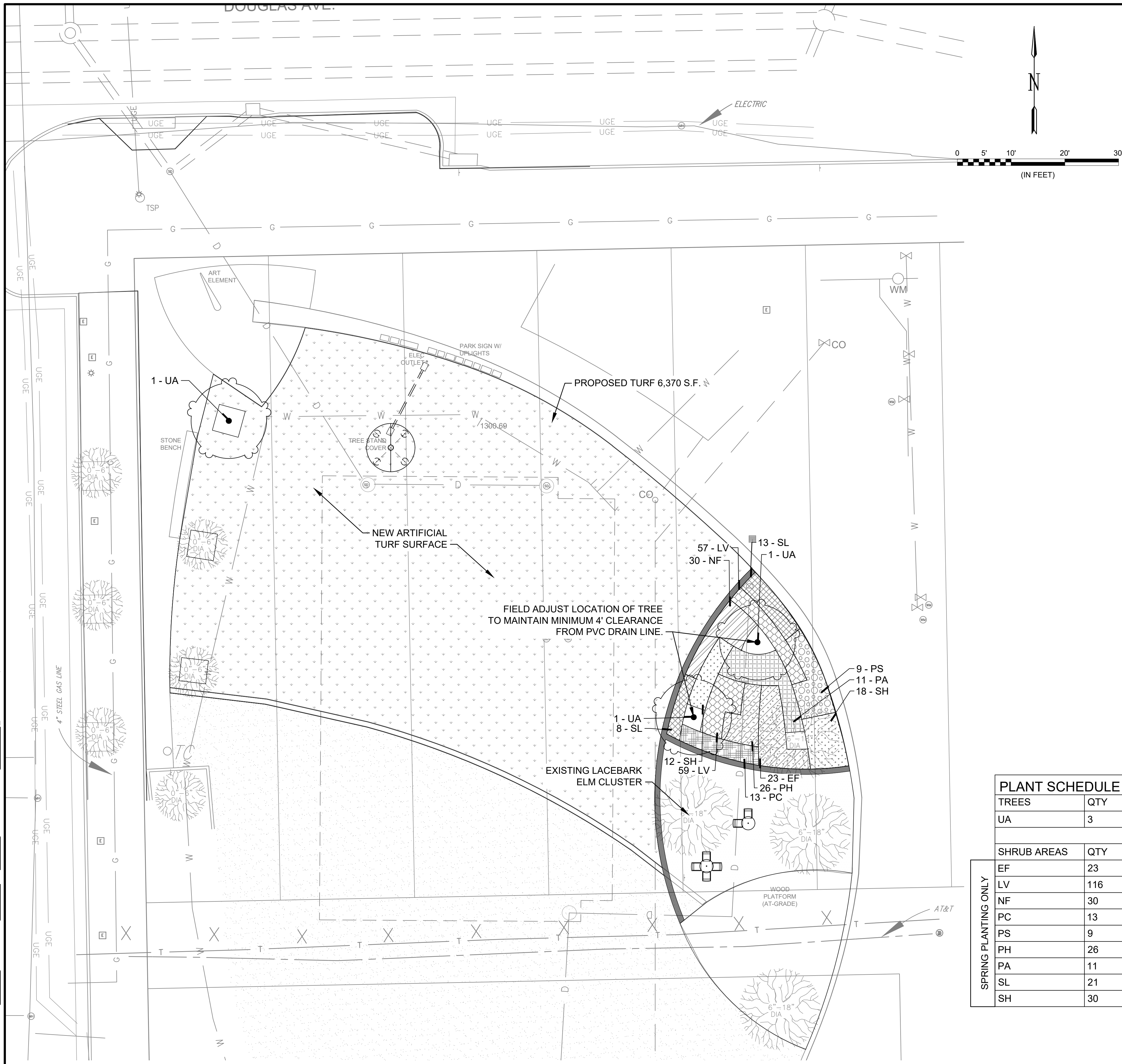


File: L:\2022\22F00030 - Natzger Park TurfDrawings\NAFPK L101.LS.dwg Last Saved: 12/7/2022 10:00 PM Last saved by: BDTThomas
 Last plotted by: Thomas, Brent D. Plot Date: 12/8/2022 5:49 PM Plotter used: DWG To PDF.pc3



LANDSCAPE NOTES

1. CONTRACTOR SHALL CONFIRM THE LOCATION OF ALL UTILITIES PRIOR TO STARTING ANY WORK. THE CONTRACTOR IS RESPONSIBLE FOR CONTACTING KANSAS ONE-CALL TO CONFIRM ALL UTILITIES.
2. ALL PLANTS MUST BE HEALTHY, VIGOROUS AND FREE OF PESTS AND DISEASE.
3. STANDARDS SET FORTH IN "AMERICAN STANDARD FOR NURSERY STOCK" REPRESENT GUIDELINE SPECIFICATIONS ONLY AND SHALL CONSTITUTE MINIMUM QUALITY REQUIREMENTS FOR PLANT MATERIAL.
4. ALL PLANTS MUST BE CONTAINER GROWN OR BALLED AND BURLAPPED AS INDICATED ON THE PLANT LIST.
5. ALL REQUIRED TREES SHALL BE 2" MINIMUM CALIPER, WITH A SINGLE DOMINATE CENTRAL TRUNK. MULTI-TRUNK TREES WILL NOT BE ACCEPTABLE WITHOUT PRIOR APPROVAL FROM PARK & RECREATION.
6. ALL TREES MUST BE STRAIGHT TRUNKED AND FULL HEADED, UNLESS SPECIFIED OTHERWISE, AND MUST MEET ALL REQUIREMENTS SPECIFIED ON PLANS.
7. ALL TREES AND SHRUBS SHALL BE INSTALLED PER STANDARD PLANTING DETAILS.
8. ALL PLANTS ARE SUBJECT TO THE APPROVAL OF THE LANDSCAPE ARCHITECT BEFORE, DURING, AND AFTER CONSTRUCTION.
9. PRIOR TO CONSTRUCTION, THE CONTRACTOR SHALL BE RESPONSIBLE FOR LOCATING ALL UNDERGROUND UTILITIES AND SHALL AVOID DAMAGE TO ALL UTILITIES DURING THE COURSE OF THE WORK. THE CONTRACTOR IS RESPONSIBLE FOR REPAIRING ANY AND ALL DAMAGE TO UTILITIES, STRUCTURES, SITE APPURTENANCES, ETC. WHICH OCCURS AS A RESULT OF THE LANDSCAPE CONSTRUCTION AT NO COST TO THE OWNER.
10. THE CONTRACTOR IS RESPONSIBLE FOR VERIFYING ALL QUANTITIES SHOWN ON THESE PLANS BEFORE PRICING THE WORK.
11. THE CONTRACTOR IS RESPONSIBLE FOR FULLY MAINTAINING ALL PLANTING MATERIAL (INCLUDING BUT NOT LIMITED TO: WATERING, SPRAYING, MULCHING, FERTILIZING, ETC.) IN ALL PLANTING AREAS AND LAWN AREAS UNTIL THE WORK IS ACCEPTED IN TOTAL BY THE OWNER.
12. TREES MAY BE PLANTED AFTER FALL OR WINTER CONSTRUCTION COMPLETION. HOWEVER, SHRUBS SHALL NOT BE PLANTED BETWEEN OCTOBER 15 AND APRIL 15. PERENNIALS SHALL ONLY BE PLANTED IN THE SPRING.
13. THE CONTRACTOR SHALL COMPLETELY GUARANTEE ALL PLANT MATERIAL FOR A PERIOD OF ONE (1) YEAR BEGINNING ON THE DATE OF TOTAL ACCEPTANCE. THE CONTRACTOR SHALL PROMPTLY MAKE ALL REPLACEMENTS BEFORE OR AT THE END OF THE GUARANTEE PERIOD.
14. ANY PLANT MATERIAL WHICH DIES, TURNS BROWN, OR DEFOLIATES (PRIOR TO TOTAL ACCEPTANCE OF THE WORK) SHALL BE PROMPTLY REMOVED FROM THE SITE AND REPLACED WITH MATERIAL OF THE SAME SPECIES, QUANTITY, AND SIZE AND MEETING ALL PLANT LIST SPECIFICATIONS.
15. NOTIFY LANDSCAPE ARCHITECT OR DESIGNATED REPRESENTATIVE OF ANY LAYOUT DISCREPANCIES PRIOR TO ANY PLANTING. LOCATE ALL UTILITIES AND SITE LIGHTING CONDUITS BEFORE CONSTRUCTION BEGINS.
16. REPLACEMENT LANDSCAPING: REQUIRED LANDSCAPING THAT DIES OR IS DAMAGED SHALL BE REMOVED AND REPLACED BY THE CONTRACTOR. THE CONTRACTOR SHALL HAVE 60 DAYS FROM THE RECEIPT OF WRITTEN NOTICE ISSUED BY THE CITY TO REMOVE AND REPLACE ANY REQUIRED LANDSCAPING THAT DIES OR IS DAMAGED.
17. MAINTAIN 5' MIN. HORIZONTAL SEPARATION BETWEEN TREE PLANTINGS AND UTILITY LINES.

PLANT SCHEDULE

TREES	QTY	BOTANICAL NAME	COMMON NAME	CONT	CAL	
UA	3	Ulmus parvifolia 'Allee' TM	Allee Lacebark Elm	B & B	2.5" Cal	
SHRUB AREAS	QTY	BOTANICAL NAME	COMMON NAME	CONT	FIELD2	SPACING
EF	23	Echinacea purpurea 'Magnus'	Coneflower	1 gal		24" o.c.
LV	116	Liatris spicata 'Kobold'	Kobold Liatris	1 gal		12" o.c.
NF	30	Nepeta x faassenii	Catmint	1 gal		18" o.c.
PC	13	Panicum virgatum 'Cheyenne Sky'	Cheyenne Sky Switch Grass	1 gal		24" o.c.
PS	9	Panicum virgatum 'Shenandoah'	Shenandoah Switch Grass	1 gal		36" o.c.
PH	26	Pennisetum alopecuroides 'Hameln'	Hameln Fountain Grass	1 gal		18" o.c.
PA	11	Perovskia atriplicifolia	Russian Sage	1 gal		36" o.c.
SL	21	Schizachyrium scoparium	Little Bluestem	1 gal		24" o.c.
SH	30	Sporobolus heterolepis	Prairie Dropseed	1 gal		24" o.c.

1 LANDSCAPE PLAN
 SCALE: 1" = 10'

© 2022 GARVER, LLC
 THIS DOCUMENT, ALONG WITH THE IDEAS AND DESIGNS CONVEYED HEREIN, SHALL BE CONSIDERED INSTRUMENTS OF PROFESSIONAL SERVICE AND ARE PROPERTY OF GARVER, LLC. ANY USE, REPRODUCTION, OR DISTRIBUTION OF THIS DOCUMENT, ALONG WITH THE IDEAS AND DESIGN CONTAINED HEREIN, IS PROHIBITED UNLESS AUTHORIZED IN WRITING BY GARVER, LLC OR EXPLICITLY ALLOWED IN THE GOVERNING PROFESSIONAL SERVICES AGREEMENT FOR THIS WORK.

1995 Midfield Road
 Wichita, KS 67209
 (316) 264-8008

Brent D. Thomas
 LICENSED
 669
 LANDSCAPE ARCHITECT
 Digitally Signed 12/07/2022

BY	DESCRIPTION	DATE	REV.

CITY OF WICHITA
 DEPT. OF PARK & RECREATION
 WICHITA, KANSAS

2022 PARK FACILITY
 ENHANCEMENTS-
 NATZGER PARK TURF
 REPLACEMENT PROJECT

LANDSCAPE PLAN

JOB NO.: 22F00030
 DATE: DEC. 2022
 DESIGNED BY: BDT
 DRAWN BY: BIG

BAR IS ONE INCH ON ORIGINAL DRAWING
 IF NOT ONE INCH ON THIS SHEET, ADJUST SCALES ACCORDINGLY.

DRAWING NUMBER
L-101

SHEET NUMBER
15