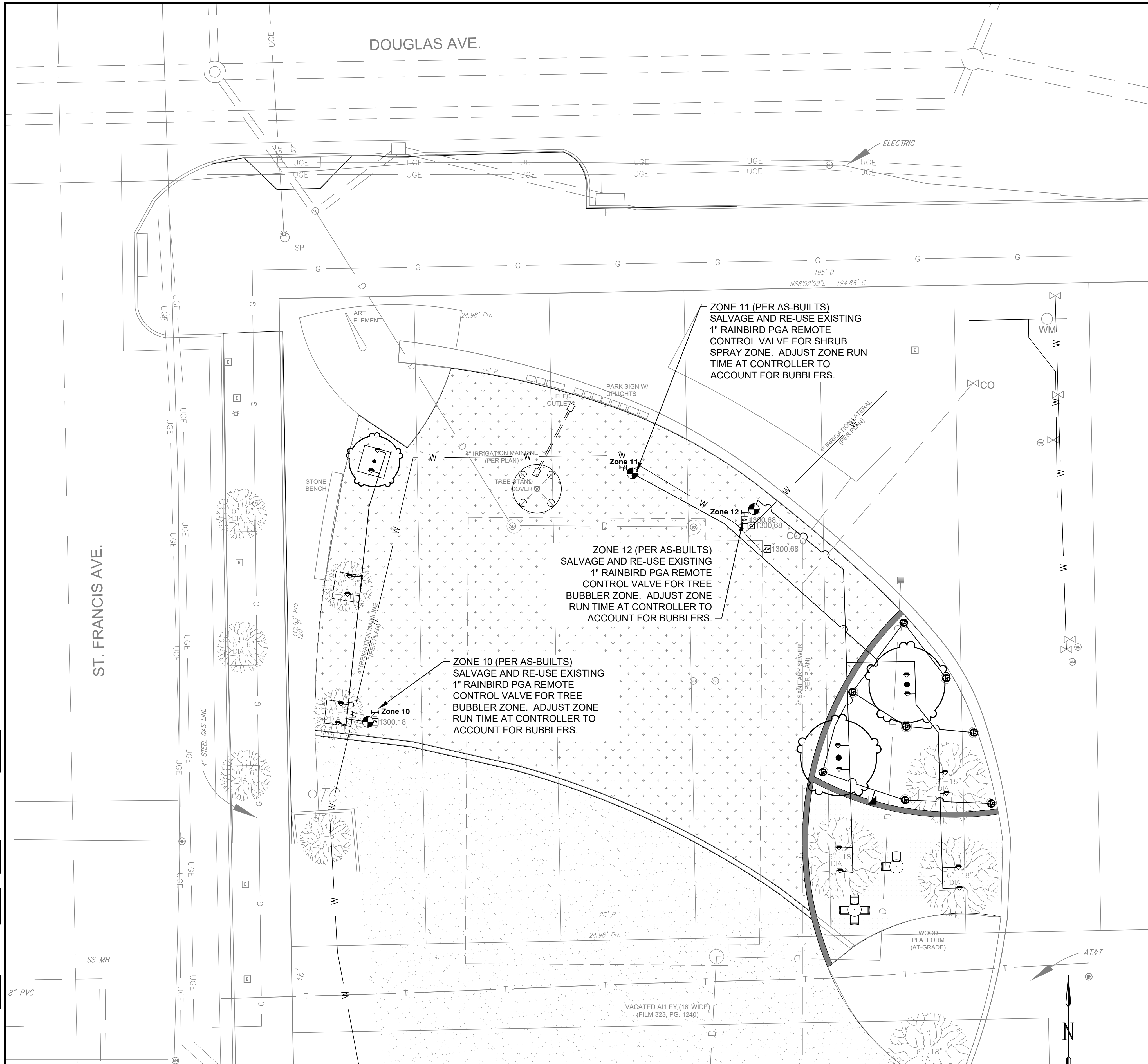
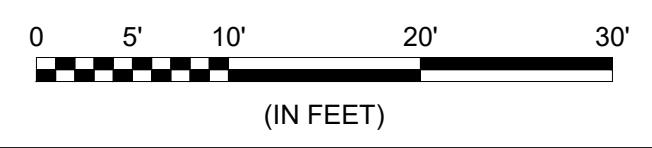


File: L:\2022\22F00030 - Natzger Park TurfDrawings\NAFPK_L1101_IR.dwg Last Save: 12/7/2022 10:10 PM Last saved by: BDThomas
 Last plotted by: Thomas, Brent D. Plot Size: AECmono.ctb Plot Scale: 1:1 Plot Date: 12/8/2022 5:49 PM Plotter used: _DWG To PDF.pc3



1 IRRIGATION PLAN
 SCALE: 1" = 10'

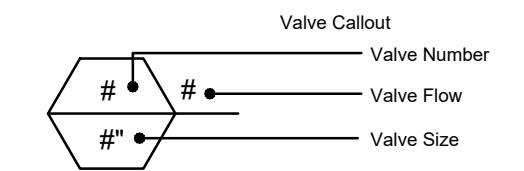


IRRIGATION NOTES

- IRRIGATION SCOPE OF WORK INCLUDES REMOVAL OF EXISTING TURF IRRIGATION COMPONENTS AND INSTALLATION OF NEW TREE BUBBLERS AS SHOWN. REFER TO DEMOLITION PLAN FOR IRRIGATION DEMOLITION INFORMATION.
- IRRIGATION CONTRACTOR SHALL RE-USE THREE (3) EXISTING 1" REMOTE CONTROL VALVES FOR NEW TREE BUBBLER AND SHRUB SPRAY ZONES AS INDICATED ON PLANS.
- IRRIGATION CONTRACTOR SHALL RE-PROGRAM THESE THREE ZONES AT THE CONTROLLER AND ADJUST RUNTIMES TO ACCOUNT FOR NEW HYDROZONES.
- IRRIGATION CONTRACTOR IS RESPONSIBLE TO EXAMINE THE PLANS IN THEIR ENTIRETY TO DETERMINE THE APPROXIMATE LOCATION OF EXISTING AND PROPOSED UTILITIES. THEY SHALL ALSO CONTACT THE APPROPRIATE AUTHORITY TO MARK UTILITIES ON THE SITE. THE IRRIGATION CONTRACTOR IS RESPONSIBLE FOR ANY DAMAGES TO UTILITIES ON SITE CAUSED BY THEIR WORK.
- CONTRACTOR SHALL EXAMINE THE DETAILS FOR ADDITIONAL REQUIREMENTS FOR THE IRRIGATION SYSTEM AND ITS INSTALLATION.
- IRRIGATION DRAWINGS ARE SCHEMATIC IN NATURE. AT TIMES, MAINLINES, LATERALS, AND VALVES MAY BE SHOWN IN PAVED AREAS OR OUTSIDE THE PROPERTY LINE FOR PLAN CLARITY PURPOSES ONLY. THE CONTRACTOR SHALL STAKE OUT IN THE FIELD ALL PRINCIPLE SYSTEM COMPONENTS FOR APPROVAL BY THE OWNER'S REPRESENTATIVE PRIOR TO INSTALLATION.
- THIS PLAN IS PROVIDED FOR INFORMATION ONLY. IRRIGATION CONTRACTOR SHALL PROVIDE IRRIGATION PLANS SEALED BY A CERTIFIED IRRIGATION DESIGNER PER CITY OF WICHITA STANDARD SPECIFICATIONS.
- THE EXISTING SYSTEM WAS DESIGNED TO FUNCTION WITH A MINIMUM DYNAMIC WATER PRESSURE OF 50 P.S.I. AT A MINIMUM RATE OF 22 G.P.M. AT THE POINT WHERE THE EXTENDED MAINLINE IS CONNECTED, PER AS-BUILT DRAWINGS.
- ALL TRENCHING WITHIN DRIP LINES OF EXISTING TREES SHALL BE BY HAND TOOLS, SHOULD ROOTS OVER 3" IN DIAMETER BE ENCOUNTERED. THE CONTRACTOR MAY PROVIDE ANOTHER PIPE ROUTE IF LOCATION IS PROVIDED ON THE AS-BUILT DRAWINGS.
- THE CONTRACTOR SHALL DEMONSTRATE TO AN OWNER'S REPRESENTATIVE THAT THE IRRIGATION SYSTEM IS FULLY FUNCTIONAL AND RUNNING PROPERLY PRIOR TO FINAL ACCEPTANCE AND BEGINNING OF WARRANTY PERIOD.
- NEW SYSTEM COMPONENTS ARE SHOWN.
- CONTRACTOR SHALL VERIFY WITH EXISTING LANDSCAPE CONTRACTOR THAT ALL IRRIGATION HEADS WITHIN CONSTRUCTION LIMITS ARE WORKING AND OPERATIONAL PRIOR TO CONSTRUCTION ACTIVITIES.

FOR INFORMATION ONLY

SCHEMATIC IRRIGATION LEGEND	
SYMBOL	MANUFACTURER/MODEL/DESCRIPTION
	Rain Bird 1812 15 Series MPR Shrub Spray 12" Pop-Up Sprinkler with Co-Molded Wiper Seal. Side and Bottom Inlet. 1/2" NPT Female Threaded Inlet.
	Rain Bird RWS-B-C 1401 Root Watering System with 4.0" diameter x 36.0" long with locking grate, semi-rigid mesh tube, and check valve. Rain Bird bubbler option as indicated: 1401 0.25 GPM, 1402 0.5 GPM, 1404 1.0 GPM, 1408 2.0 GPM.
	EXISTING Rain Bird PGA Globe Existing 1" Electric Remote Control Valve, Globe. Re-use existing valve. Re-program run time at controller for conversion to tree bubblers.
	Rain Bird 33-DNP 3/4in. Brass Quick-Coupling Valve, with Corrosion-Resistant Stainless Steel Spring, Locking Thermoplastic Non-Potable Purple Rubber Cover, and 2-Piece Body.
	Zone 11 Point of Connection 1" Existing Turf Zone Valve- Zone 11- Salvage and re-use
	Zone 10 Point of Connection 1" Existing Turf Zone Valve- Zone 10- Salvage and re-use
	Zone 12 Point of Connection 1" Existing Turf Zone Valve- Zone 12- Salvage and Re-use
	Irrigation Lateral Line: PVC Schedule 40
	Irrigation Mainline: PVC Schedule 40



© 2022 GARVER, LLC
 THIS DOCUMENT, ALONG WITH THE IDEAS AND DESIGNS CONVEYED HEREIN, SHALL BE CONSIDERED INSTRUMENTS OF PROFESSIONAL SERVICE AND ARE PROPERTY OF GARVER, LLC. ANY USE, REPRODUCTION, OR DISTRIBUTION OF THIS DOCUMENT, ALONG WITH THE IDEAS AND DESIGN CONTAINED HEREIN, IS PROHIBITED UNLESS AUTHORIZED IN WRITING BY GARVER, LLC OR EXPLICITLY ALLOWED IN THE GOVERNING PROFESSIONAL SERVICES AGREEMENT FOR THIS WORK.

1995 Midfield Road
 Wichita, KS 67209
 (316) 264-8008

REV.	DATE	DESCRIPTION	BY

CITY OF WICHITA
 DEPT. OF PARK & RECREATION
 WICHITA, KANSAS
 2022 PARK FACILITY
 ENHANCEMENTS-
 NATZGER PARK TURF
 REPLACEMENT PROJECT

SCHEMATIC IRRIGATION PLAN

JOB NO.: 22F00030
 DATE: DEC. 2022
 DESIGNED BY: BDT
 DRAWN BY: BIG

BAR IS ONE INCH ON ORIGINAL DRAWING
 IF NOT ONE INCH ON THIS SHEET, ADJUST SCALES ACCORDINGLY.

DRAWING NUMBER
LI-101

SHEET NUMBER
16