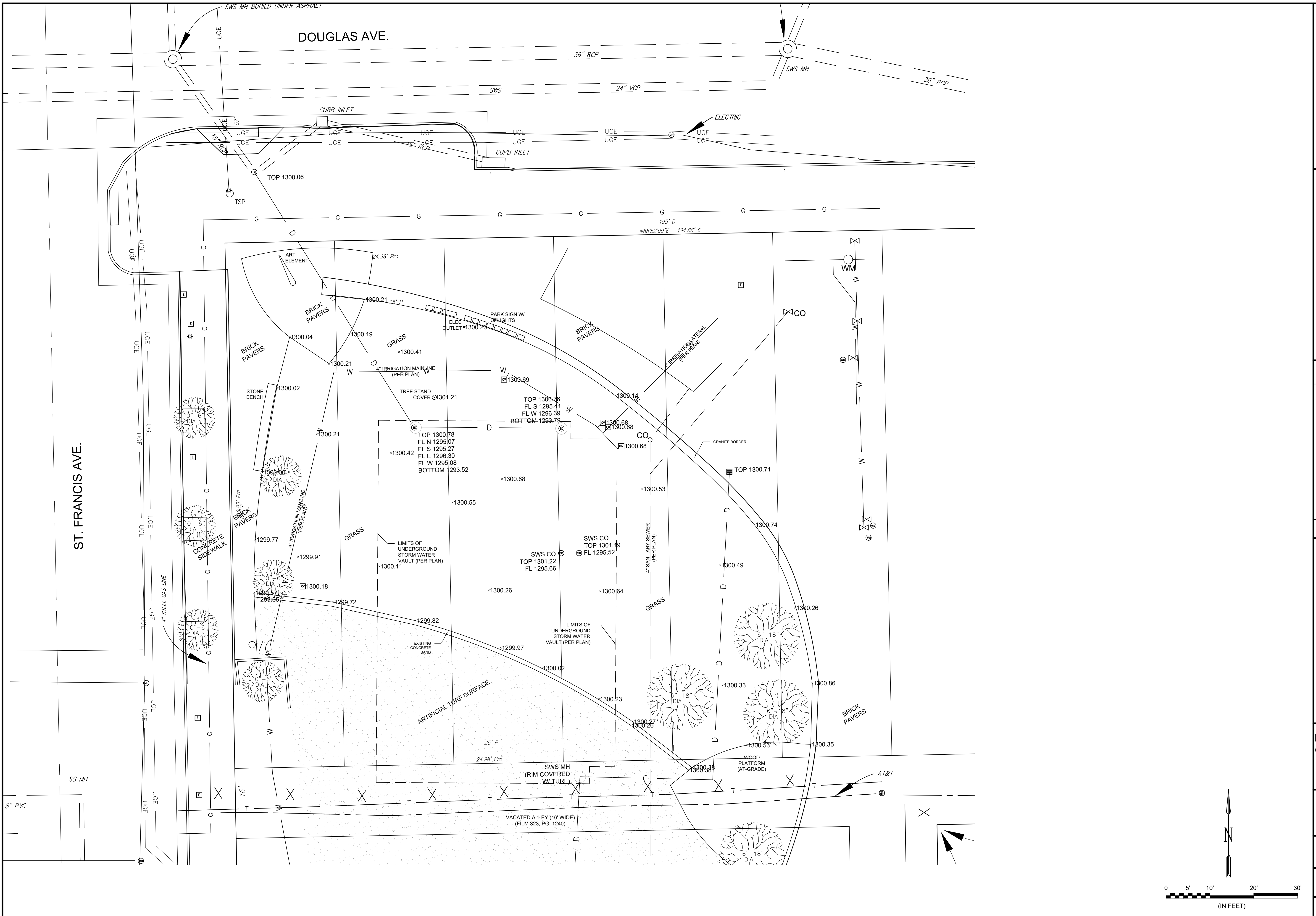
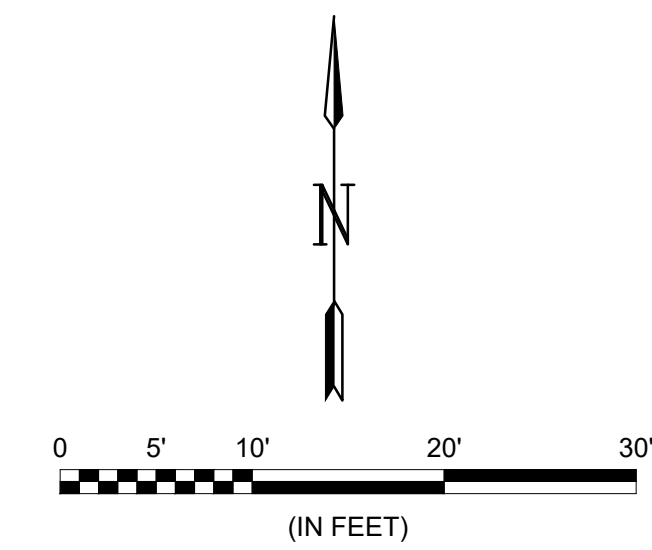


File: L:\2022\22F00030 - Natzger Park TurnDrawings\NAFPK_G101_EX.dwg Last Save: 6/13/2022 4:18 PM Last saved by: B(Gillespie)
 Last plotted by: Thomas, Brent D. Plot Style: AECMonochrome.ctb Plot Scale: 1:1 Plot Date: 12/18/2022 5:48 PM Plotter used: DWG To PDF.pc3



ST. FRANCIS AVE.

DOUGLAS AVE.



© 2022 GARVER, LLC
 THIS DOCUMENT, ALONG WITH THE IDEAS AND DESIGNS CONVEYED HEREIN, SHALL BE CONSIDERED INSTRUMENTS OF PROFESSIONAL SERVICE AND ARE PROPERTY OF GARVER, LLC. ANY USE, REPRODUCTION, OR DISTRIBUTION OF THIS DOCUMENT, ALONG WITH THE IDEAS AND DESIGN CONTAINED HEREIN, IS PROHIBITED UNLESS AUTHORIZED IN WRITING BY GARVER, LLC OR EXPLICITLY ALLOWED IN THE GOVERNING PROFESSIONAL SERVICES AGREEMENT FOR THIS WORK.

1995 Midfield Road
 Wichita, KS 67209
 (316) 264-8008

Digitally Signed 12/07/2022

REV.	DATE	DESCRIPTION	BY

CITY OF WICHITA
 DEPT. OF PARK & RECREATION
 WICHITA, KANSAS

2022 PARK FACILITY
 ENHANCEMENTS-
 NATZGER PARK TURF
 REPLACEMENT PROJECT

EXISTING
 CONDITIONS

JOB NO.: 22F00030
 DATE: DEC. 2022
 DESIGNED BY: BDT
 DRAWN BY: BIG

BAR IS ONE INCH ON ORIGINAL DRAWING
 IF NOT ONE INCH ON THIS SHEET, ADJUST SCALES ACCORDINGLY.

DRAWING NUMBER
G-101
 SHEET NUMBER
3