

**FENCING/ROOT PROTECTION**  
 ORANGE CONSTRUCTION FENCING TO BE PROVIDED AND MAINTAINED AT DRIPLINE. FENCE TO BE INSTALLED BETWEEN TREE AND PROJECT AREA. IT IS NOT NECESSARY TO SURROUND TREE(S) ENTIRELY IF CONSTRUCTION ACTIVITY WILL ONLY BE ON ONE SIDE OF TREE(S).

ENGINEER OR LANDSCAPE ARCHITECT'S APPROVAL REQUIRED FOR USE/ACCESS WITHIN ZONE B. PERMISSION FOR USE/ACCESS REQUIRES SURFACE PROTECTION FOR ALL UNFENCED, UNPAVED SURFACES WITHIN ZONE B

- \* SURFACE PROTECTION MEASURES**
- MULCH LAYER, 6"-8" DEPTH
  - 3/4" PLYWOOD
  - STEEL PLATES

**TRENCHING/EXCAVATION**

**ZONE A (CRITICAL ROOT ZONE)**

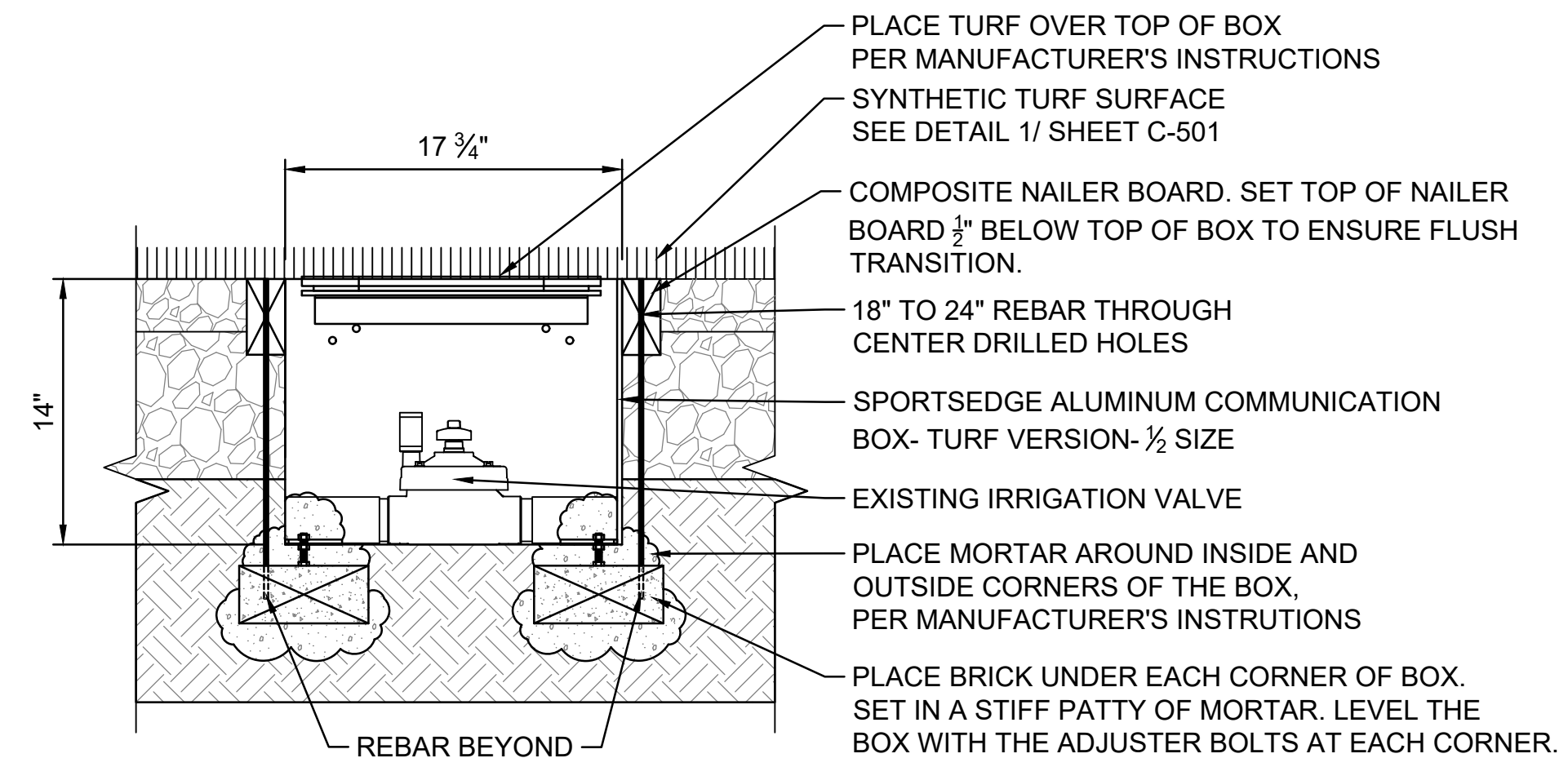
- NO DISTURBANCE ALLOWED WITHOUT SITE-SPECIFIC INSPECTION AND APPROVAL OF METHODS TO MINIMIZE ROOT DAMAGE
- SEVERANCE OF ROOTS LARGER THAN 2" DIA REQUIRES ENGINEER'S APPROVAL
- TUNNELING REQUIRED TO INSTALL LINES 3'-0" BELOW GRADE OR DEEPER

**ZONE B (DRIPLINE)**

- OPERATION OF HEAVY EQUIPMENT AND/OR STOCKPILING OF MATERIALS SUBJECT TO ENGINEERS APPROVAL. SURFACE PROTECTION\* MEASURES REQUIRED
- TRENCHING ALLOWED AS FOLLOWS:
  - EXCAVATION BY HAND OR WITH HAND-DRIVEN TRENCHER MAY BE REQUIRED
  - LIMIT TRENCH WIDTH. DO NOT DISTURB ZONE A MAINTAIN 2/3 OR MORE OF ZONE B IN UNDISTURBED CONDITION
- TUNNELING MAY BE REQUIRED FOR TRENCHES DEEPER THAN 3'-0"

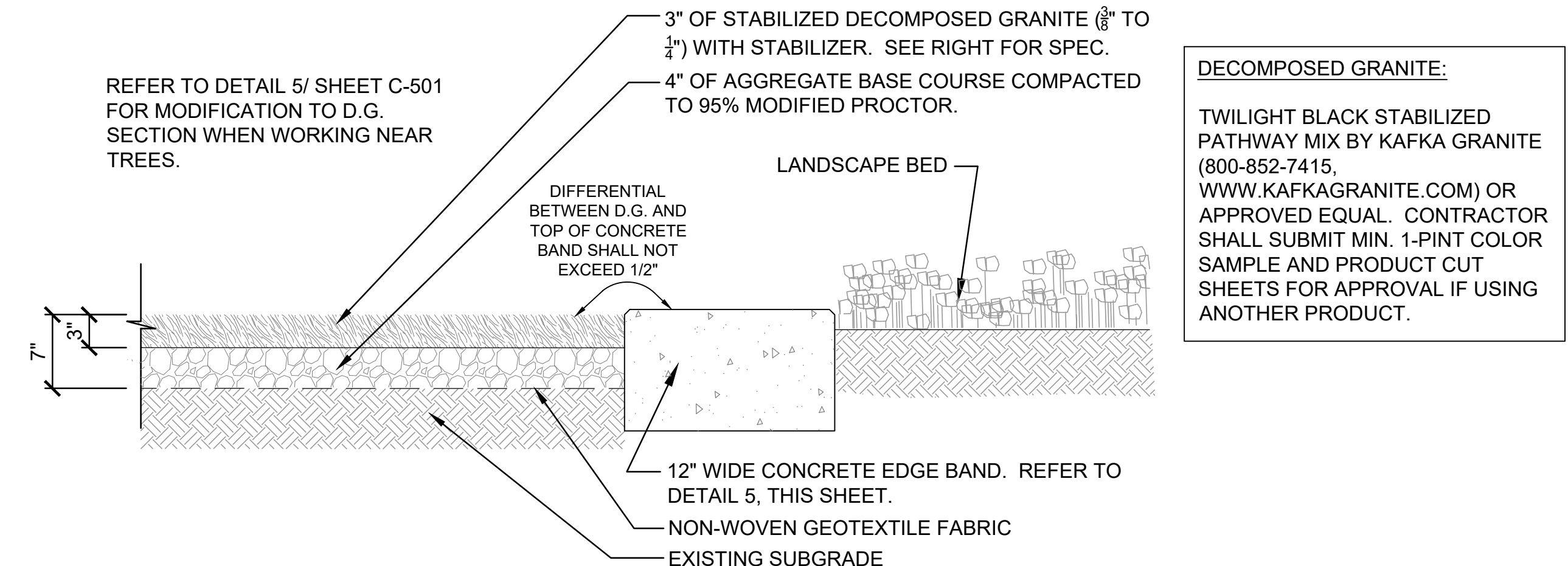
**ZONE C (FEEDER ROOT ZONE)**

- OPERATION OF HEAVY EQUIPMENT AND/OR STOCKPILING OF MATERIALS SUBJECT TO ENGINEERS APPROVAL.
- SURFACE PROTECTION\* MEASURES MAY BE REQUIRED TRENCHING WITH HEAVY EQUIPMENT ALLOWED AS FOLLOWS:
  - MINIMIZE TRENCH WIDTH
  - MAINTAIN 2/3 OR MORE OF ZONE C IN UNDISTURBED CONDITION



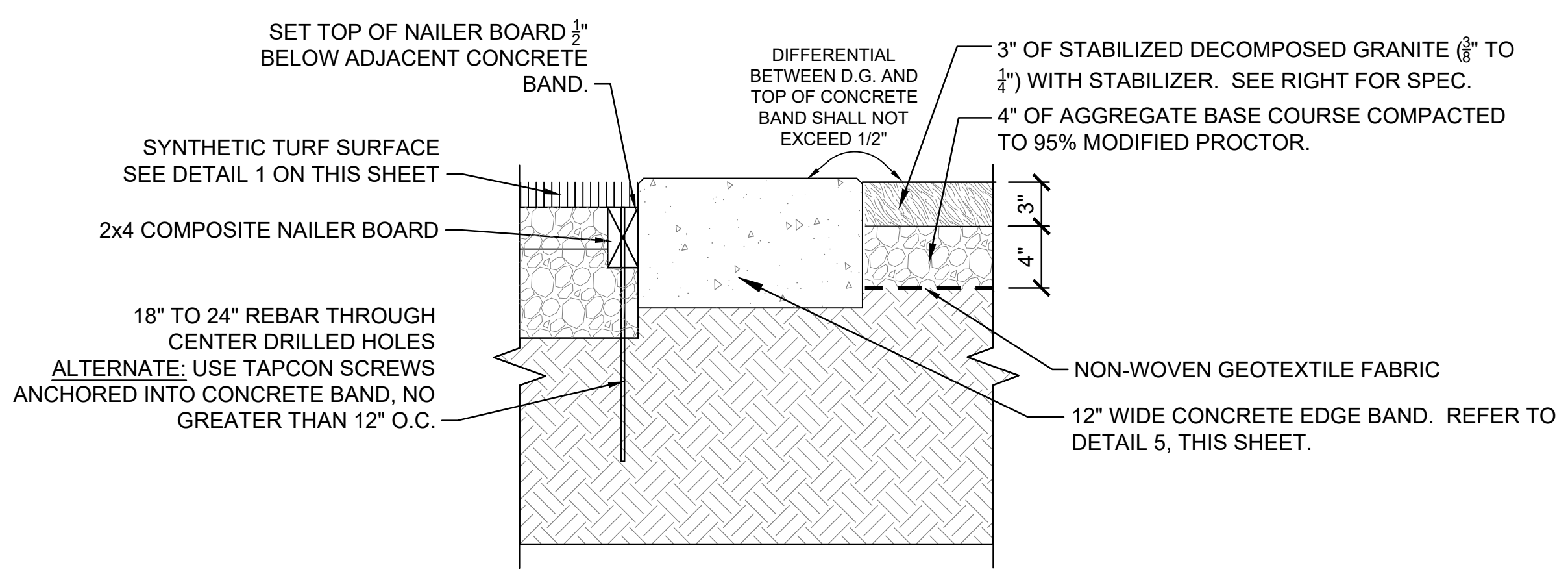
PRE-FABRICATED BOX TO BE THE FOLLOWING:  
 ALUMINUM COMMUNICATIONS BOX, TURF VERSION (#SEF920)  
 BY SPORTS EDGE, 800-334-6057,  
 WWW.SPORTSEGE.COM/ATHLETIC-FIELD-EQUIPMENT/COMMUNICATION-BOXES/  
 INSTALL BOXES PER MANUFACTURER'S INSTRUCTIONS.  
 FIELD-WRAP BOXES WITH TURF BEING INSTALLED IN PARK.

**2 IRRIGATION VALVE BOX DETAIL**  
 SCALE: NONE

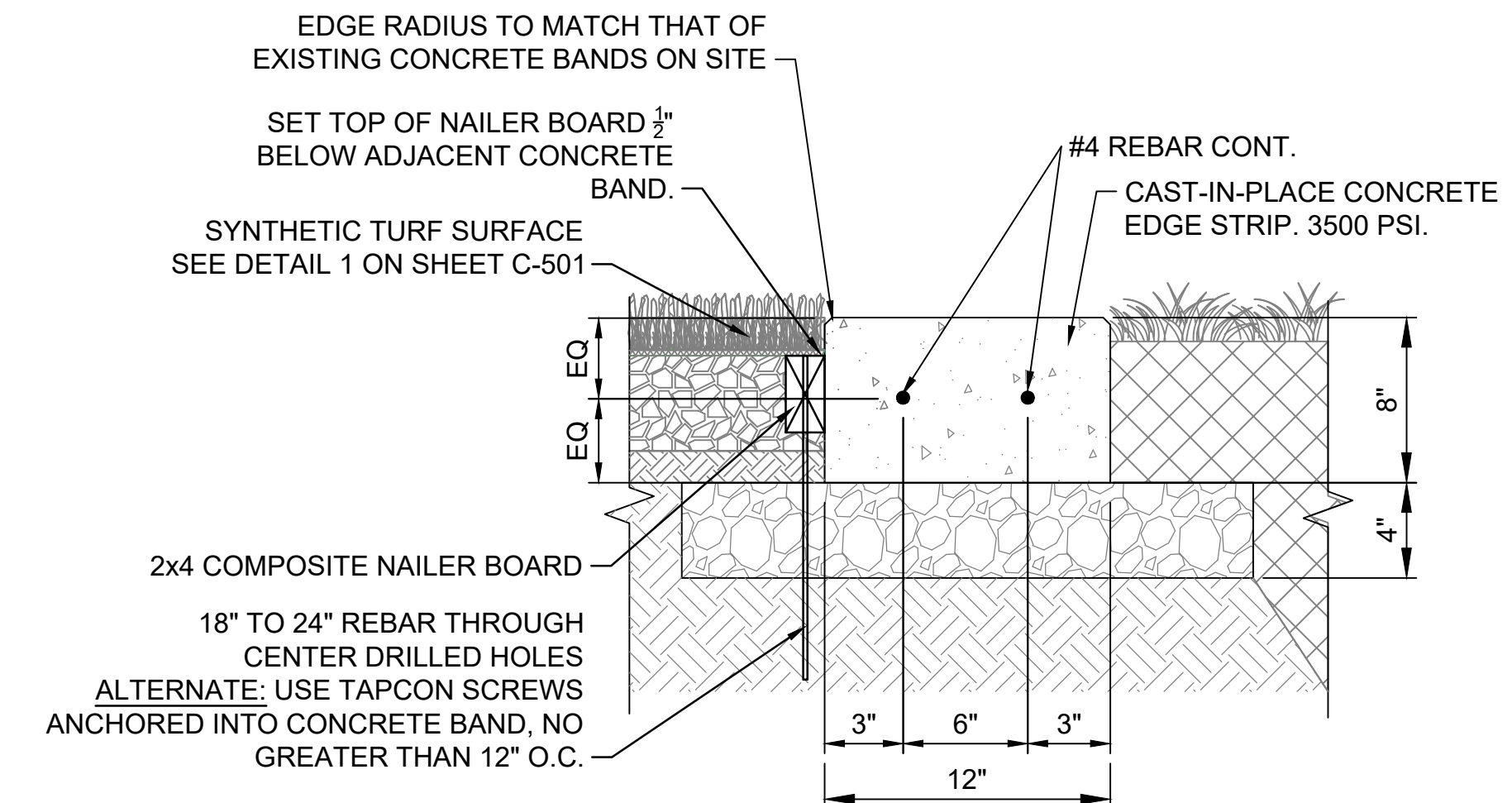


**3 DECOMPOSED GRANITE SURFACE WITH LANDSCAPE EDGING**  
 SCALE: NONE

**1 TREE PROTECTION DETAIL**  
 SCALE: NONE



**4 DECOMPOSED GRANITE SURFACE AND TRANSITION AT TURF**  
 SCALE: NONE



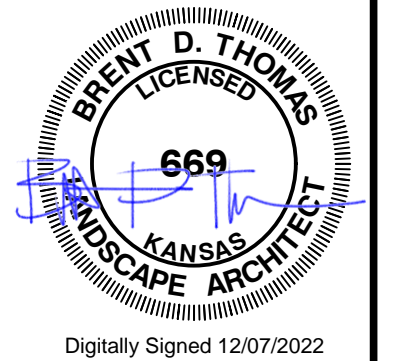
**5 CONCRETE BAND**  
 SCALE: NONE

File: L:\2022\22F00030 - Natzger Park TurnDrawings\NAFPK\_C501\_L1.dwg Last Save: 12/8/2022 5:35 PM Last saved by: BDTThomas  
 Last plotted by: Thomas, Brent D. Plot Date: 12/8/2022 5:48 PM Plotter used: DWG To PDF.pc3



© 2022 GARVER, LLC  
 THIS DOCUMENT, ALONG WITH THE IDEAS AND DESIGNS CONVEYED HEREIN, SHALL BE CONSIDERED INSTRUMENTS OF PROFESSIONAL SERVICE AND ARE PROPERTY OF GARVER, LLC. ANY USE, REPRODUCTION, OR DISTRIBUTION OF THIS DOCUMENT, ALONG WITH THE IDEAS AND DESIGN CONTAINED HEREIN, IS PROHIBITED UNLESS AUTHORIZED IN WRITING BY GARVER, LLC OR EXPLICITLY ALLOWED IN THE GOVERNING PROFESSIONAL SERVICES AGREEMENT FOR THIS WORK.

1995 Midfield Road  
 Wichita, KS 67209  
 (316) 264-8008



REV.	DATE	DESCRIPTION	BY

CITY OF WICHITA  
 DEPT. OF PARK & RECREATION  
 WICHITA, KANSAS  
 2022 PARK FACILITY  
 ENHANCEMENTS-  
 NATZGER PARK TURF  
 REPLACEMENT PROJECT

CIVIL DETAILS 02

JOB NO.: 22F00030  
 DATE: DEC. 2022  
 DESIGNED BY: BDT  
 DRAWN BY: BIG

BAR IS ONE INCH ON ORIGINAL DRAWING  
 IF NOT ONE INCH ON THIS SHEET, ADJUST SCALES ACCORDINGLY.

DRAWING NUMBER  
**C-502**

SHEET NUMBER  
**8**