

PLOTTED: Wednesday, December 28, 2022 @ 10:55AM

# STREET IMPROVEMENTS FOR 21ST STREET NORTH - MOSLEY TO I-135 PHASE 1



CITY OF WICHITA  
SEDGWICK COUNTY, KANSAS  
C.O.W. PROJECT NO. 472-2021-085733  
ORIG. CODE 40106521  
MUNIS NUMBER E1063  
WATER PROJECT NO. 448-2021-002927  
ORIG. CODE 54250321  
MUNIS NUMBER W1005

### INDEX OF SHEETS

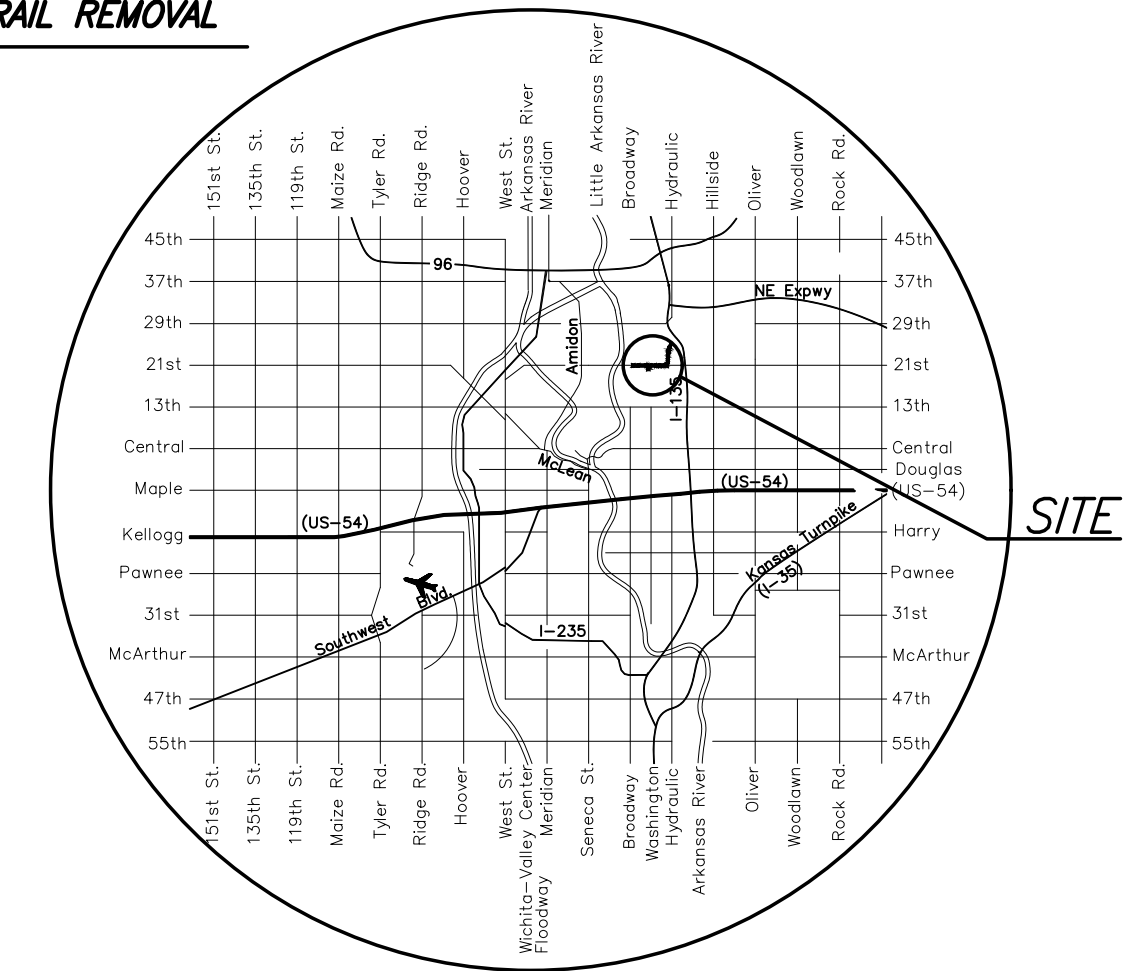
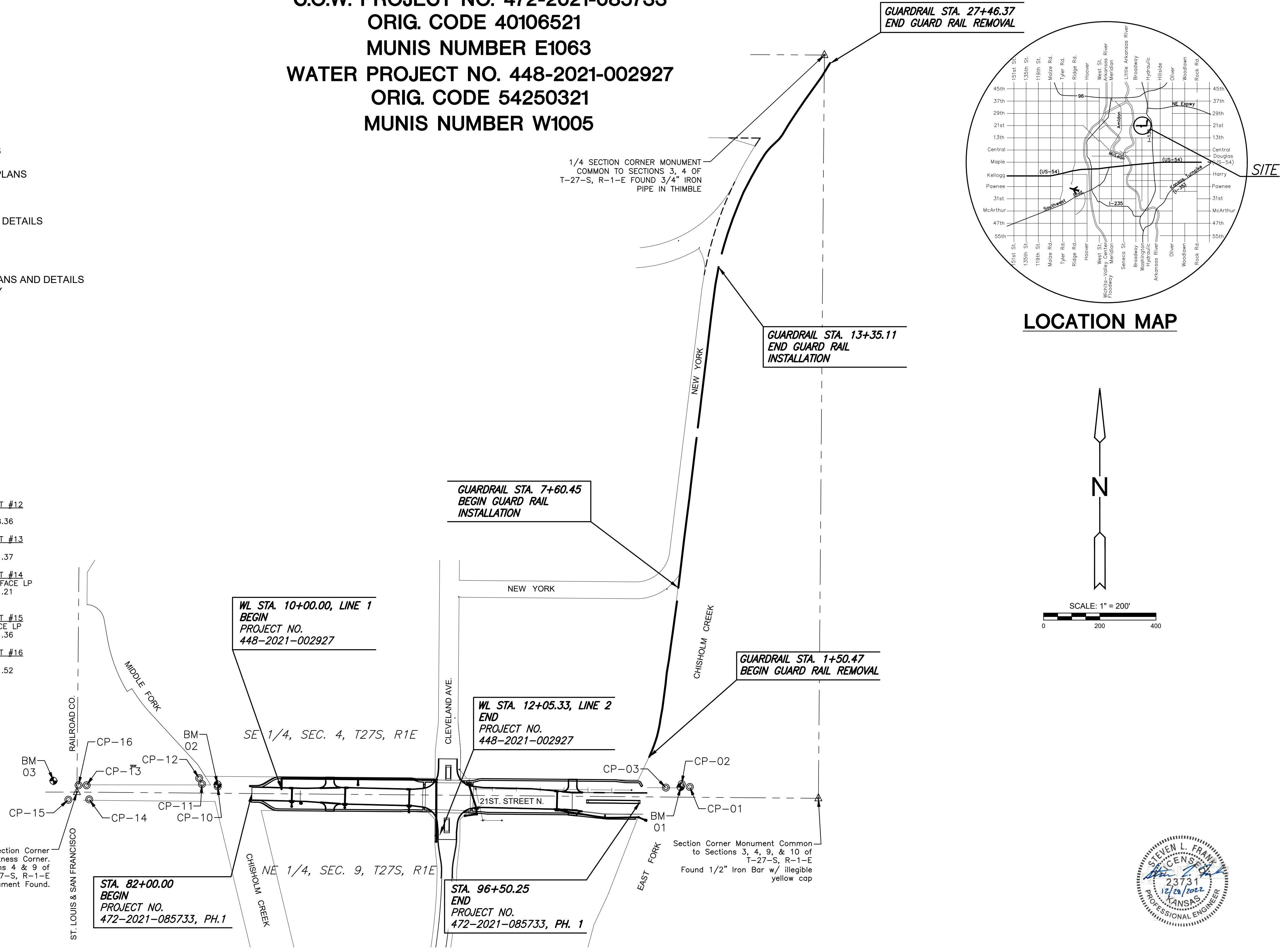
SH. NO.	DESCRIPTION
1	TITLE SHEET
2	GENERAL NOTES
3	TYPICAL SECTIONS
4-6	PAVING PLANS
7-8	PAVING BUBBLE MAPS
9	STORM SEWER KEY MAP
10-13	STORM SEWER PLAN & PROFILES
14	STORM SEWER BUBBLE MAP
15	SPECIAL WASTE EXCAVATION DETAILS
16-18	GUARDRAIL PLAN AND DETAILS
19-28	PAVING DETAILS AND INTERSECTION PLANS
29-36	STORM SEWER DETAILS
37	MISCELLANEOUS DETAILS
38	WATER KEY MAP
39-45	WATER LINE PLANS, BUBBLE MAP AND DETAILS
46-47	SUMMARY OF QUANTITIES
48-54	EROSION CONTROL PLANS
55	ROADSIDE IMPROVEMENT PLAN
56-66	TRAFFIC SIGNAL PLANS AND DETAILS
67-69	PAVEMENT MARKING AND SIGNING PLANS AND DETAILS
70	CONSTRUCTION SEQUENCE SUMMARY
71-84	TRAFFIC CONTROL
85	DRAINAGE MAP
86-92	CROSS SECTIONS

### PROJECT CONTROL AND INFORMATION

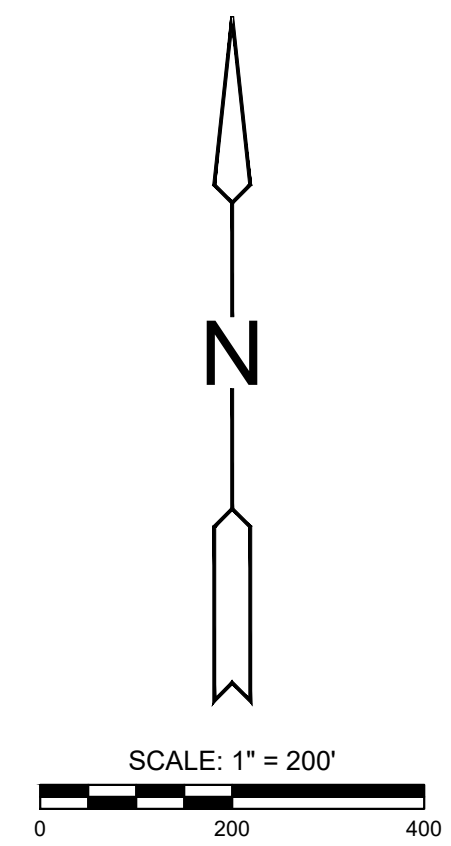
<b>BENCHMARK #01</b> COW Brass Disk "KDOT" on NE Corner of 21st Street drainage structure over the East Fork Chisholm Creek Elevation=1311.92 (NAVD88)	<b>CONTROL POINT #01</b> W FACE METAL TRP Elevation=1312.36	<b>CONTROL POINT #12</b> BOL 523 RP Elevation=1308.36
<b>BENCHMARK #02</b> Square Box set in top NW corner of 21st Street drainage structure headwall over the Wichita Drainage Canal. Elevation=1311.46 (NAVD88)	<b>CONTROL POINT #02</b> TOP BRACE POST CHAIN LINK FNC th Elevation=1309.47	<b>CONTROL POINT #13</b> XC / FOUND Elevation=1311.37
<b>BENCHMARK #03</b> Square Box Found in corner of Concrete block. Elevation=1312.23 (NAVD88)	<b>CONTROL POINT #03</b> FOR BM COW ENVIRONMENT AND HEALTH SWL-05 Elevation=1312.27	<b>CONTROL POINT #14</b> NL SHINER W FACE LP Elevation=1311.21
	<b>CONTROL POINT #10</b> FRONT OF CONC CURB Elevation=1307.39	<b>CONTROL POINT #15</b> 60D IN SE FACE LP Elevation=1311.36
	<b>CONTROL POINT #11</b> XC SET IN SO CUT Elevation=1308.09	<b>CONTROL POINT #16</b> XC / FOUND Elevation=1311.52

**DATUM:**  
The Horizontal Datum is based on the Kansas Coordinate System of 1983, NAD83(2011), South Zone, US Survey Foot Grid to ground. Coordinates shown have been modified to the ground using a combined adjustment factor of 1.0001200144. State Plane coordinates can be calculated by multiplying the shown values by 0.99988.  
GPS Scale Point N: 0.00 E: 0.00  
All elevations shown are based on the NAVD 88 vertical datum, Geoid18.

Calculated 1/4 Section Corner from Witness Corner, Common to Sections 4 & 9 of T-27-S, R-1-E No Monument Found.



LOCATION MAP



STREET IMPROVEMENTS FOR  
**21ST STREET - MOSLEY TO I-135**  
PHASE 1

©2022 MKEC Engineering All Rights Reserved  
www.mkec.com  
These drawings and their contents, including, but not limited to, all concepts, designs, & ideas are the exclusive property of MKEC Engineering (MKEC), and may not be used or reproduced in any way without the express consent of MKEC.

### TITLE SHEET

PROJECT NO.	472-2021-085733	
DATE	12/28/2022	
SCALE	1"=200'	
DESIGNED	DRAWN	CHECKED
SLF	BKS	JRA
NO.	REVISION	DATE
SHEET NO.		

