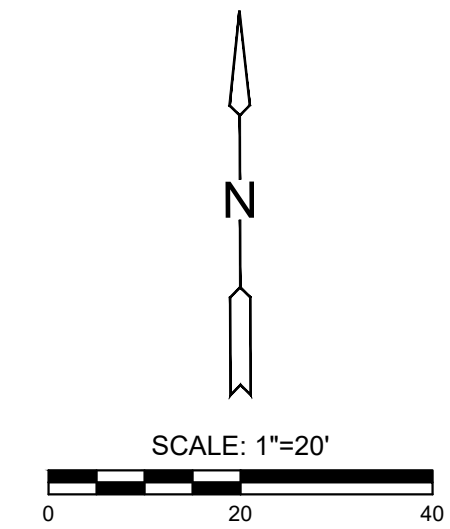
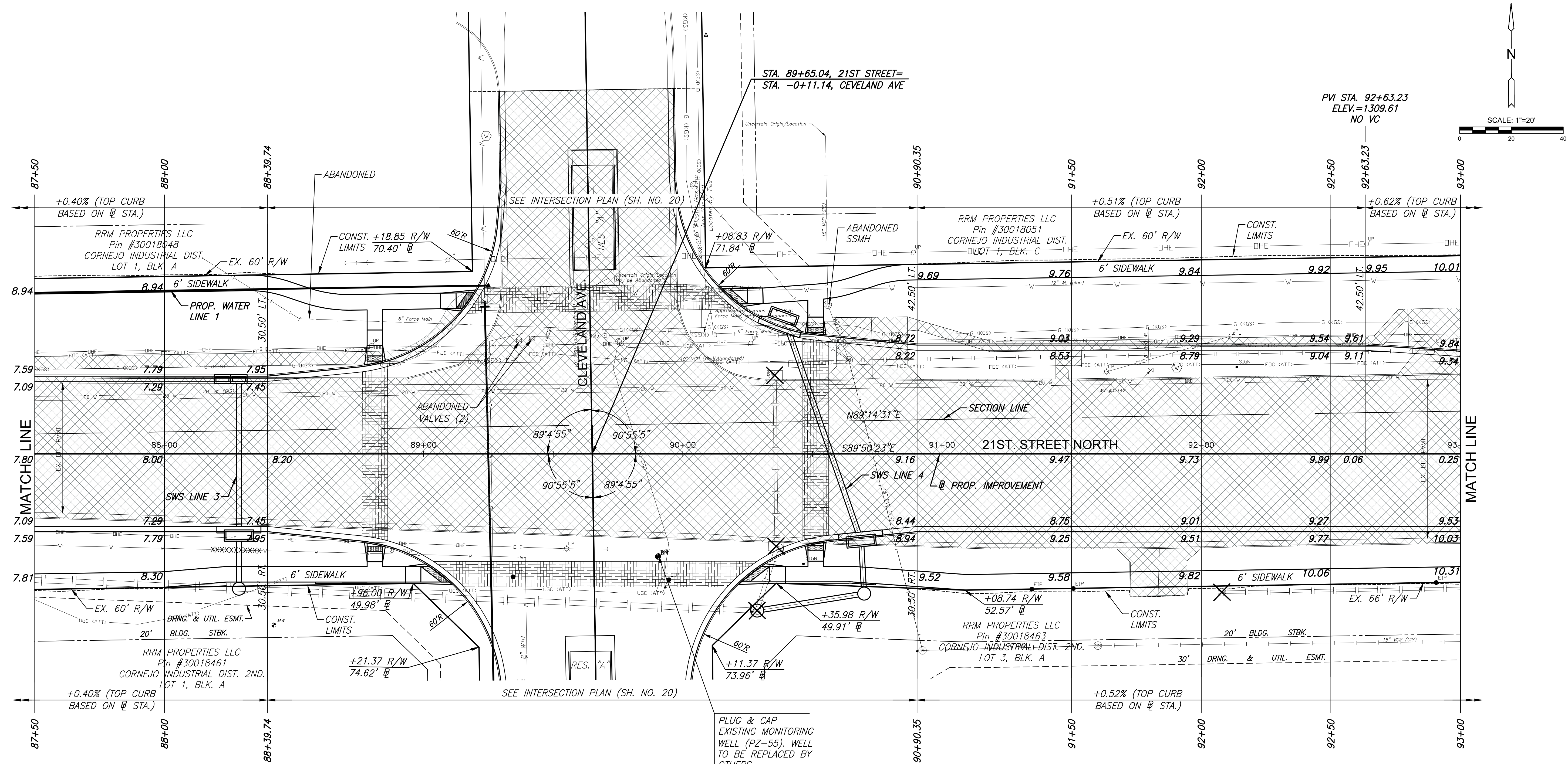


STREET IMPROVEMENTS FOR  
**21ST STREET - MOSLEY TO I-135**  
PHASE 1

PLOTTED: Wednesday, December 28, 2022 @ 10:56AM

J:\PROJECTS\2021\101010465\_COW\_21ST STREET FROM MOSLEY TO I-135\001\0465 CAD\SHOTS\05 CIVIL\PAV\PHASE 1\210465 PAV PLAN 2.DWG

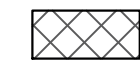






REMOVAL OF EXISTING PIPES AND STRUCTURES			
STATION TO STATION	SIDE	ITEM	REMARKS
88+18.70 TO 88+38.69	36.9' RT., 37.4' RT.	REMOVE 20.0 L.F. OF WTR	PLUG & ABANDON WTR ON ENDS
90+28.68	60.5' RT.	REMOVE STORM MANHOLE	REPLACE W/ NEW MH (LINE 4)
90+35.45	30.4' LT.	REMOVE STORM CURB INLET	
90+36.00	35.6' RT.	REMOVE STORM CURB INLET	
90+28.68 TO 90+35.45	60.5' RT., 30.4' LT.	ABANDON SWS PIPE (85 L.F.)	PLUG SWS ON ENDS
90+55.89	57.6' LT.	ABANDON SS MANHOLE	ABANDONED IN PREVIOUS PROJECT (ASSUMED)
92+07.93	53.4' RT.	ABANDON STORM MANHOLE	
92+07.93 TO 93+00.00	53.4' RT., 51.9' RT.	ABANDON SWS PIPE (92 L.F.)	PLUG SWS ON EAST END
91+80.51	32.2' LT.	REMOVE WTR VALVE CAN	ABANDON VALVE #32142; PLUG & ABANDON 8\"/>
91+90.58	33.2' LT.	REMOVE WTR METER CAN	RETURN METER TO CITY
91+94.89	28.0' LT.	REMOVE WTR VALVE CAN	ABANDON VALVE
91+95.54	28.2' LT.	REMOVE WTR VALVE CAN	ABANDON VALVE

NOTE: EXISTING STORM SEWER PIPE/MAIN THAT HAVE SEGMENTS OF THE LINE CALLED OUT FOR REMOVAL SHALL BE PLUGGED UTILIZING THE DETAIL ON SHEET 37 AND ABANDONED IN PLACE.

UTILITY ADJUSTMENTS				
STATION	OFFSET	EXIST. ELEV.	PROP. ELEV.	REMARKS
89+23.58	58.8' LT.	1309.35	1308.84	ADJUST WTR VALVE CAN
90+64.02	36.2' LT.	1309.45	1308.39	SSMH AJUSTED W/ NEW RING & COVER

SIDEWALK NOTE: PROPOSED SIDEWALK DOES NOT FOLLOW THE SAME SLOPES AS THE PROPOSED ROAD. GENERALLY, THE SIDEWALK ELEVATIONS MATCH OR ARE SLIGHTLY LOWER THAN THE EXISTING GROUND ELEVATION AT THE RIGHT-OF-WAY LINE.

- LEGEND**
-  PAVEMENT REMOVAL
  -  PIPE REMOVAL (WTR & SWS)
  -  CONSTRUCT WHEELCHAIR RAMP SEE SH. NO. 27
  -  BRICK PAVERS
  -  STORM STRUCTURE REMOVAL

21ST ST. PAVING PLAN STA. 87+50 TO STA. 93+00

PROJECT NO. 472-2021-085733  
DATE 12/28/2022  
SCALE 1"=20'  
DESIGNED SLF DRAWN WNJ CHECKED JRA

NO.	REVISION	DATE

SHEET NO. 5 OF 92