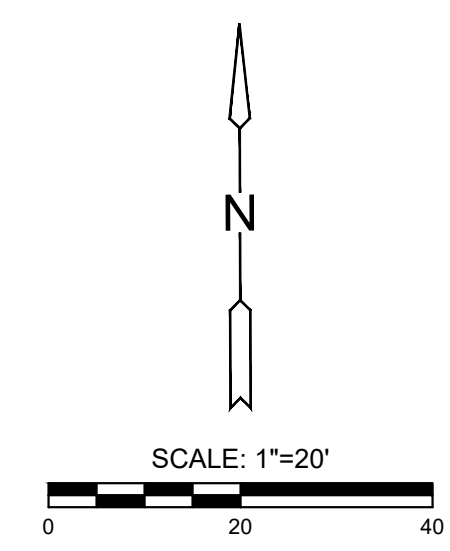
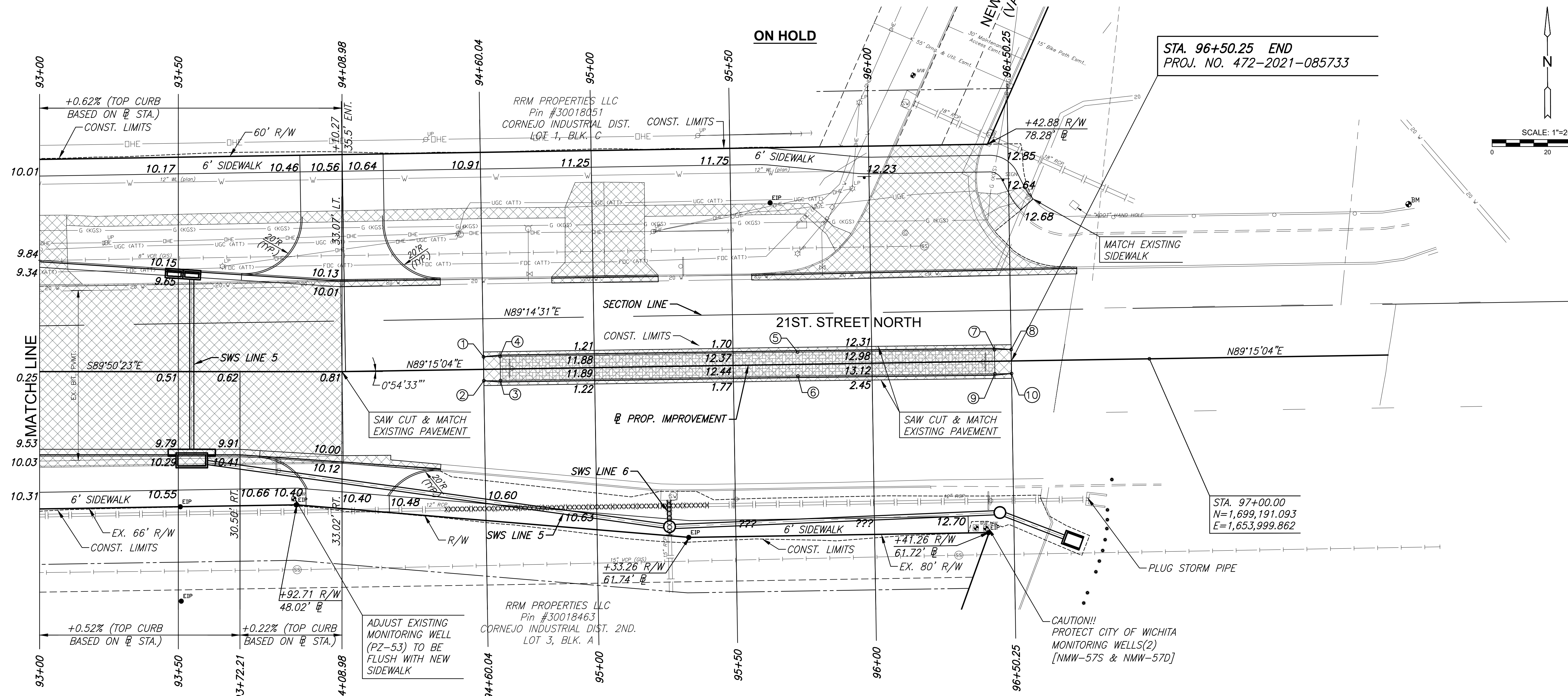


PLOTTED: Wednesday, December 28, 2022 @ 10:58AM

P.I. STA. 94+08.98, NO CURVE  
 $\Delta = 0^{\circ}54'33''$  LT.  
 1. N=1,699,187.290, E=1,653,708.865

POT STA. 97+00.00  
 1. N=1,699,191.093, E=1,653,999.862

NE COR. SEC. 9, T27S, R1E  
 STA. 102+85.05, 18.39' LT.  
 FND 1/2" IRON BAR W/ ILLEGIBLE YELLOW CAP  
 1. N=1,699,217.122, E=1,654,584.621



STREET IMPROVEMENTS FOR  
**21ST STREET - MOSLEY TO I-135**  
 PHASE 1

REMOVAL OF EXISTING PIPES AND STRUCTURES				
STATION TO STATION	SIDE	ITEM	REMARKS	
93+00.00 TO 94+43.46	51.9' RT., 50.2' RT.	ABANDON SWS PIPE (144 L.F.)	PLUG SWS ON BOTH ENDS	
94+43.46 TO 95+40.18	50.2' RT., 50.2' RT.	REMOVE 96.7 L.F. OF SWS		
95+40.18 TO 96+77.85	50.2' RT., 50.3' RT.	ABANDON SWS PIPE (138 L.F.)	PLUG SWS ON BOTH ENDS	
95+26.16	46.4' RT.	REMOVE STORM CURB INLET		
95+26.16 TO 95+26.21	46.4' RT., 61.0' RT.	REMOVE 14.6 L.F. OF SWS	PLUG SWS SOUTH	

UTILITY ADJUSTMENTS				
STATION	OFFSET	EXIST. ELEV.	PROP. ELEV.	REMARKS
93+91.62	45.8' RT.	1310.46	1310.47	ADJUST LID/TOP EXIST. MON. WELL
95+82.68	34.8' LT.	1311.46	1312.28	ADJUST WTR VALVE CAN
96+12.71	46.8' LT.	1311.90	1312.54	ADJUST GAS VALVE CAN
96+19.61	41.9' LT.	1312.58	1312.66	SSMH ADJUSTED W/ NEW RING & COVER

MEDIAN POINTS			
POINT NO.	STATION/OFFSET	TOP CURB ELEVATION	FLOWLINE ELEVATION
1	94+60.04/4.53' LT.	1310.91	1310.89
2	94+60.04/4.11' RT.	1310.96	1310.95
3	94+66.04/4.12' RT.	1311.64	1310.97
4	94+66.04/4.52' LT.	1311.60	1310.93
5	95+73.28/4.42' LT.	1312.64	1311.95
6	95+73.26/4.22' RT.	1312.74	1312.05
7	96+44.24/4.15' LT.	1313.47	1312.80
8	96+50.24/4.13' LT.	1312.90	1312.88
9	96+44.25/4.49' RT.	1313.58	1312.91
10	96+50.25/4.54' RT.	1312.98	1312.97

- LEGEND**
- PAVEMENT REMOVAL
  - PIPE REMOVAL (WTR & SWS)
  - CONSTRUCT WHEELCHAIR RAMP SEE SH. NO. 27
  - BRICK PAVERS
  - STORM STRUCTURE REMOVAL

©2022 MKEC Engineering All Rights Reserved  
 These drawings and their contents, including, but not limited to, all concepts, designs, & ideas are the exclusive property of MKEC Engineering (MKEC), and may not be used or reproduced in any way without the express consent of MKEC.

21ST ST. PAVING  
 PLAN STA. 93+00  
 TO STA. 96+50.25

PROJECT NO. 472-2021-085733  
 DATE 12/28/2022  
 SCALE 1"=20'  
 DESIGNED SLF DRAWN WNJ CHECKED JRA

NO.	REVISION	DATE

SHEET NO. 6 OF 92

NOTE: EXISTING STORM SEWER PIPE/MAIN THAT HAVE SEGMENTS OF THE LINE CALLED OUT FOR REMOVAL SHALL BE PLUGGED UTILIZING THE DETAIL ON SHEET 37 AND ABANDONED IN PLACE.

SIDEWALK NOTE: PROPOSED SIDEWALK DOES NOT FOLLOW THE SAME SLOPES AS THE PROPOSED ROAD. GENERALLY, THE SIDEWALK ELEVATIONS MATCH OR ARE SLIGHTLY LOWER THAN THE EXISTING GROUND ELEVATION AT THE RIGHT-OF-WAY LINE.

BM #01 COW BRASS DISK "KDOT" ON NE CORNER OF 21ST STREET DRAINAGE STRUCTURE OVER THE EAST FORK CHISHOLM CREEK STA. 16+12.08, 39.64' RT. ELEV. 1311.92 (NAVD 88)