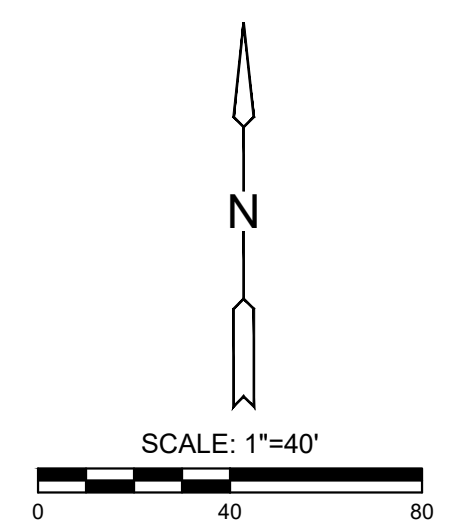
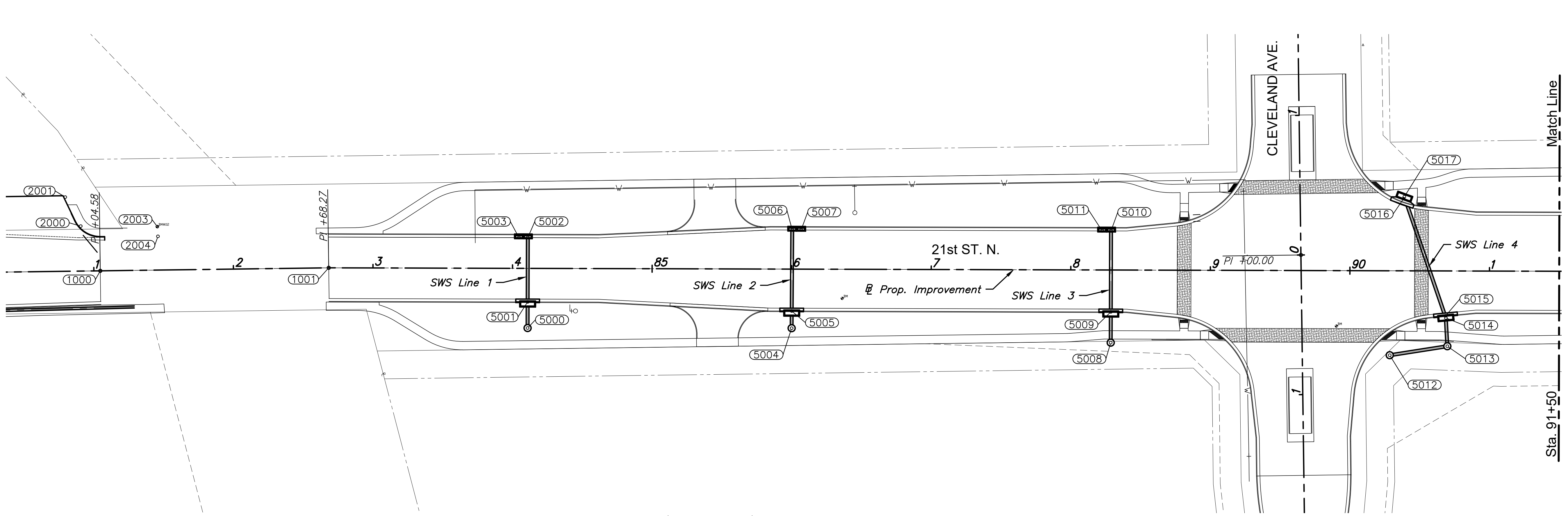
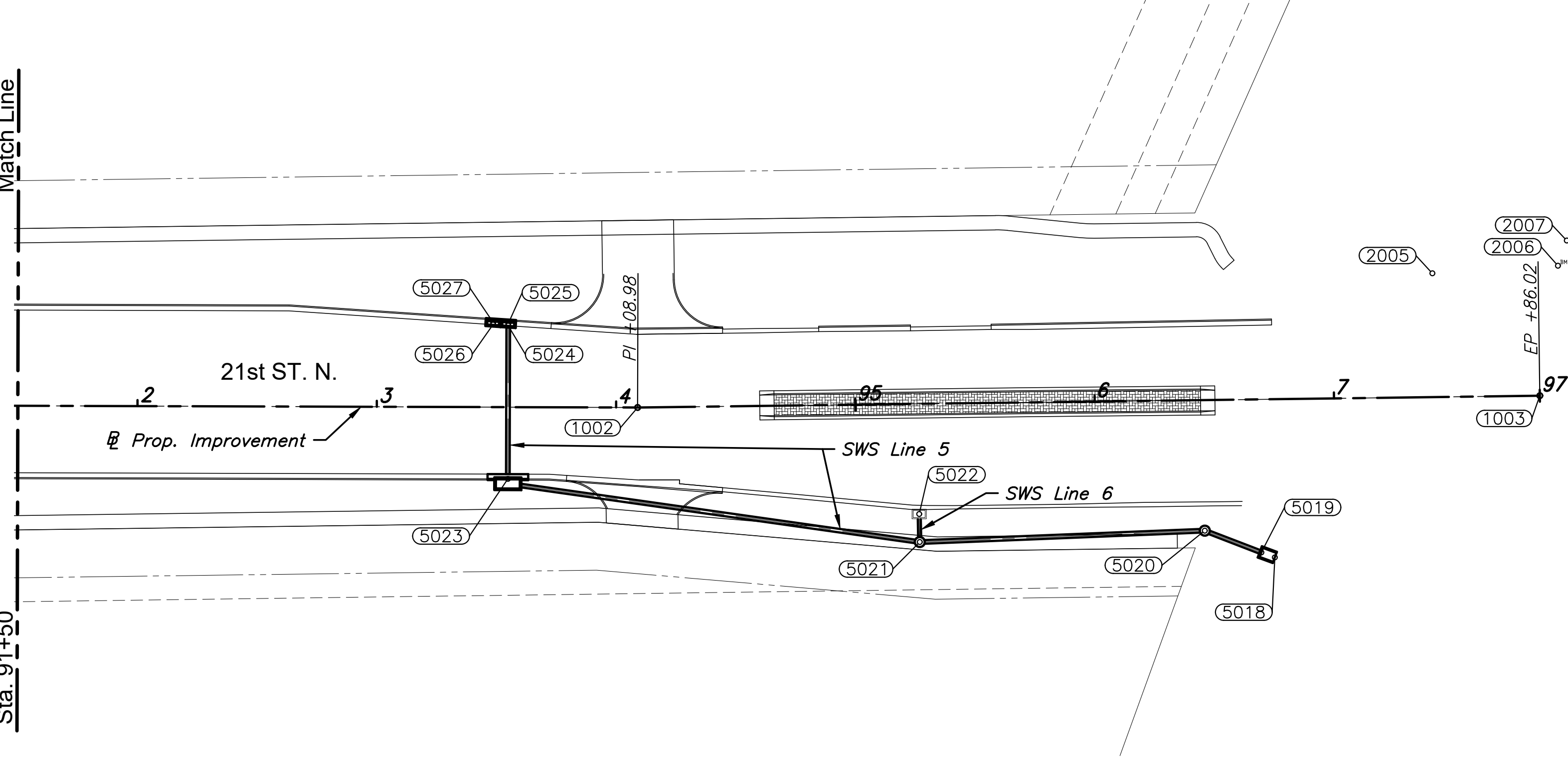


J:\PROJECTS\2021\1010445_COW_21ST STREET FROM MOSLEY TO I-135\00210445 CAD\SHS\05 CIVIL\SW\PHASE 12\10445 SWS BUBBLE MAP.DWG
 PLOTTED: Wednesday, December 28, 2022 @ 11:00AM



STREET IMPROVEMENTS FOR
21ST STREET - MOSLEY TO I-135
 PHASE 1



PROJECT CONTROL AND INFORMATION

BENCHMARK #01
 COW Brass Disk "KDOT" on NE Corner of 21st Street drainage structure over the East Fork Chisholm Creek
 Elevation=1311.92 (NAVD88)

BENCHMARK #02
 Square Box set in top NW corner of 21st Street drainage structure headwall over the Wichita Drainage Canal.
 Elevation=1311.46 (NAVD88)

CONTROL POINT #02
 TOP BRACE POST CHAIN LINK FNC th
 Elevation=1309.47

CONTROL POINT #03
 FOR BM COW ENVIRONMENT AND HEALTH SWL-05
 Elevation=1312.27

CONTROL POINT #10
 FRONT OF CONC CURB
 Elevation=1307.39

CONTROL POINT #11
 XC SET IN SQ CUT
 Elevation=1308.09

CONTROL POINT #12
 BOL SZ3 RP
 Elevation=1308.36

Horizontal Datum: NAD83(2011) Kansas State Plane, South Zone, US Survey Foot Grid to ground C.A.F. 0.99988 (SPC/CAF=Ground)
 GPS Scale Point N: 0.00 E:0.00
 Vertical Datum: NAVD88 (Geoid18)

BASELINE POINTS				
POINT #	NORTHING	EASTING	STATION/OFFSET	DESC.
1000	1699188.318	1652404.490	81+04.58/0.00'	BL
1001	1699190.483	1652568.162	82+68.27/0.00'	BL
1002	1699187.290	1653708.865	94+08.98/0.00'	BL
1003	1699192.218	1654085.872	97+86.02/0.00'	BL

CONTROL POINTS				
POINT #	NORTHING	EASTING	STATION/OFFSET	DESC.
2000	1699220.345	1652390.458	80+90.98/32.21' LT.	CP#11
2001	1699241.116	1652379.371	80+80.17/53.13' LT.	CP#12
2003	1699219.975	1652445.340	81+45.85/31.11' LT.	BM#2
2004	1699212.998	1652445.778	81+46.19/24.13' LT.	CP#10
2005	1699243.379	1654040.957	97+41.77/51.74' LT.	CP#3
2006	1699246.560	1654093.431	97+94.29/54.24' LT.	BM#1
2007	1699257.100	1654097.128	97+98.12/64.73' LT.	CP#2

SWS POINTS				
POINT #	NORTHING	EASTING	STATION/OFFSET	DESC.
5000	1699147.353	1652710.648	84+10.88/42.73' RT.	5' DIA. SHALLOW MH DH
5001	1699166.084	1652710.700	84+10.88/24.00' RT.	TYPE 1 INLET
5002	1699212.084	1652710.829	84+10.88/22.00' LT.	TYPE 2 INLET
5003	1699212.102	1652704.489	84+04.54/22.00' LT.	TYPE 2 INLET
5004	1699147.257	1652899.842	86+00.07/42.30' RT.	5' DIA. SHALLOW MH DH
5005	1699159.554	1652899.917	86+00.11/30.00' RT.	TYPE 1 INLET
5006	1699217.554	1652900.303	86+00.33/28.00' LT.	TYPE 2 INLET
5007	1699217.536	1652906.643	86+06.67/28.00' LT.	TYPE 2 INLET
5008	1699136.882	1653128.481	88+28.74/52.03' RT.	5' DIA. SHALLOW MH
5009	1699158.915	1653128.543	88+28.74/30.00' RT.	TYPE 1 INLET
5010	1699216.914	1653128.705	88+28.74/28.00' LT.	TYPE 2 INLET
5011	1699216.932	1653122.365	88+22.40/28.00' LT.	TYPE 2 INLET
5012	1699127.862	1653328.397	90+28.68/60.49' RT.	5' DIA. SHALLOW MH
5013	1699134.322	1653369.672	90+69.93/53.92' RT.	5' DIA. SHALLOW MH
5014	1699154.593	1653368.602	90+68.81/33.65' RT.	TYPE 1 INLET CNTR.
5015	1699156.086	1653368.459	90+68.66/32.16' RT.	TYPE 1 INLET FC
5016	1699239.986	1653338.343	90+38.31/51.66' LT.	TYPE 1A INLET FC
5017	1699241.397	1653338.853	90+38.82/53.07' LT.	TYPE 1A INLET CNTR.
5018	1699124.627	1653975.132	96+74.40/66.14' RT.	HEADWALL CL
5019	1699126.701	1653969.502	96+68.80/63.99' RT.	HEADWALL FC
5020	1699135.808	1653945.850	96+45.27/54.57' RT.	4' DIA. STD. MH
5021	1699131.048	1653826.763	95+26.13/57.78' RT.	4' DIA. STD. MH
5022	1699142.768	1653826.545	95+26.07/46.06' RT.	EX. CURB INLET
5023	1699157.442	1653654.656	93+54.85/30.00' RT.	TYPE 1 INLET
5024	1699221.510	1653654.779	93+54.80/34.07' LT.	TYPE 2 INLET FC
5025	1699222.385	1653654.838	93+54.85/34.94' LT.	TYPE 2 INLET CNTR.
5026	1699221.937	1653648.453	93+48.47/34.48' LT.	TYPE 2 INLET FC
5027	1699222.812	1653648.512	93+48.53/35.35' LT.	TYPE 2 INLET CNTR.

©2022 MKEC Engineering All Rights Reserved www.mkec.com
 These drawings and their contents, including, but not limited to, all concepts, designs, & ideas are the exclusive property of MKEC Engineering (MKEC), and may not be used or reproduced in any way without the express consent of MKEC.

STORM SEWER BUBBLE MAP

PROJECT NO.	472-2021-085733	
DATE	12/28/2022	
SCALE	1"=40'	
DESIGNED	DRAWN	CHECKED
SLF	WNJ	JRA
NO.	REVISION	DATE

SHEET NO.