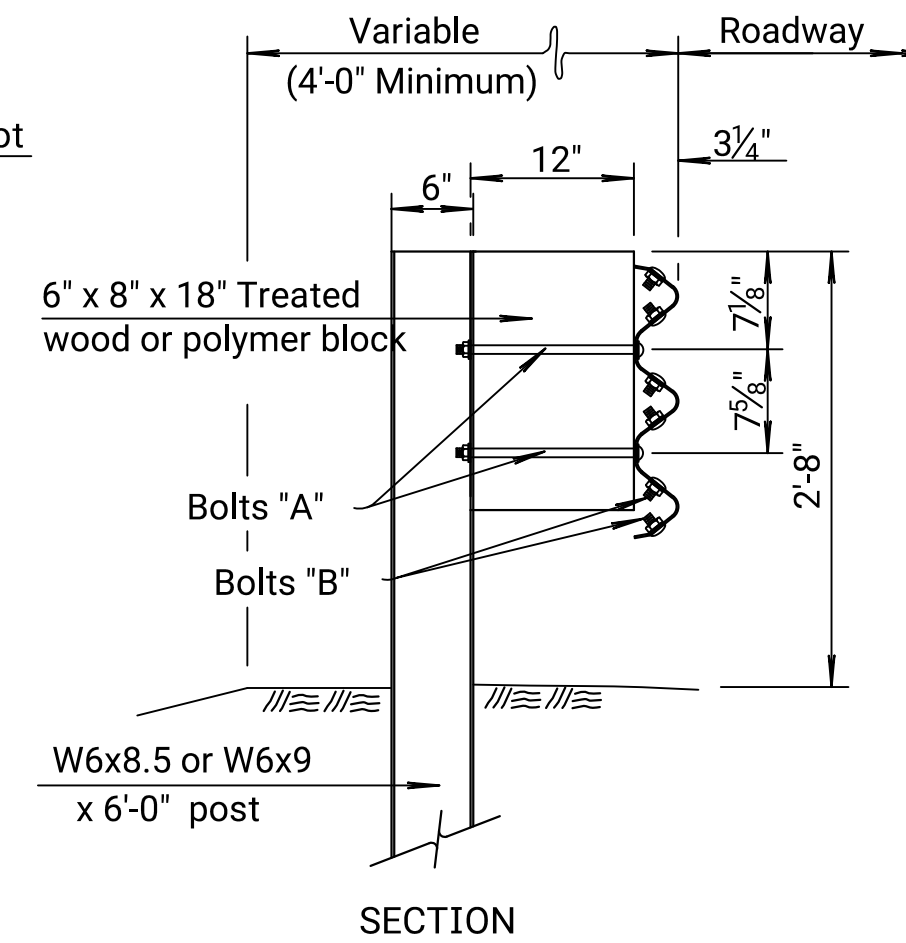


THRIE BEAM POST DETAILS

◆ Lap guardrail splices, including terminal connector, in the direction of traffic. Where traffic is temporarily carried in the opposite direction of final configuration, lap rail splices in the direction of permanent traffic.



GENERAL NOTES

Terminal end posts consist of a wood post inserted into a steel tube see details on this sheet.

The steel soil tubes may be driven with an approved driving head. Set steel tube and soil plate before installing wood anchor post assembly. Do not drive steel soil tubes with wood post in the tube. Backfill and satisfactorily compact around steel soil tubes placed in drilled holes to prevent tube settlement.

Galvanize all steel parts after fabrication.

Lap guardrail splices, including terminal connector, in the direction of traffic.

Where traffic is temporarily carried in the opposite direction of final configuration, lap rail splices in the direction of the permanent traffic.

All work and materials required for the installation of Barrier Terminal Type II are considered subsidiary to the bid item "Steel Plate Guardrail".

Include Type II end terminal in pay length of "Steel Plate Guardrail".

GENERAL NOTES (Steel Posts)

Use grade of steel for steel posts that meets the requirements of the standard specifications.

Hot dip galvanize the posts after fabrication, see standard specifications.

Use only one post/blockout type within guardrail run, this excludes the guardrail end terminals.

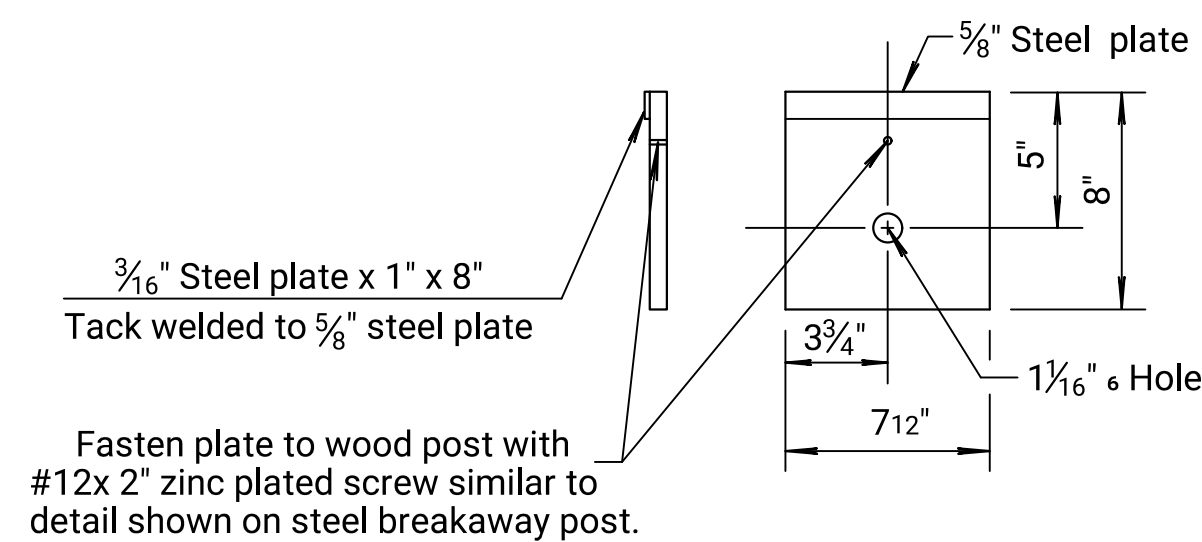
For wood/polymer blockout requirements see standard specifications. Approved polymer blockouts may be substituted for wood blockouts. Only one type of blockout is permitted on each guardrail installation. This excludes the guardrail end terminals.

Set guardrail posts by digging or by driving. Use post caps to protect the post from crushing during driving operations. Contractor must notify Engineer at the earliest time when a non-removable manmade object (footing, pipe, etc.) is encountered and prevents installation of a full length post. Contractor must obtain Engineer approval prior to cutting post shorter than 6'-6" except as allowed on Standard Drawing RD617.

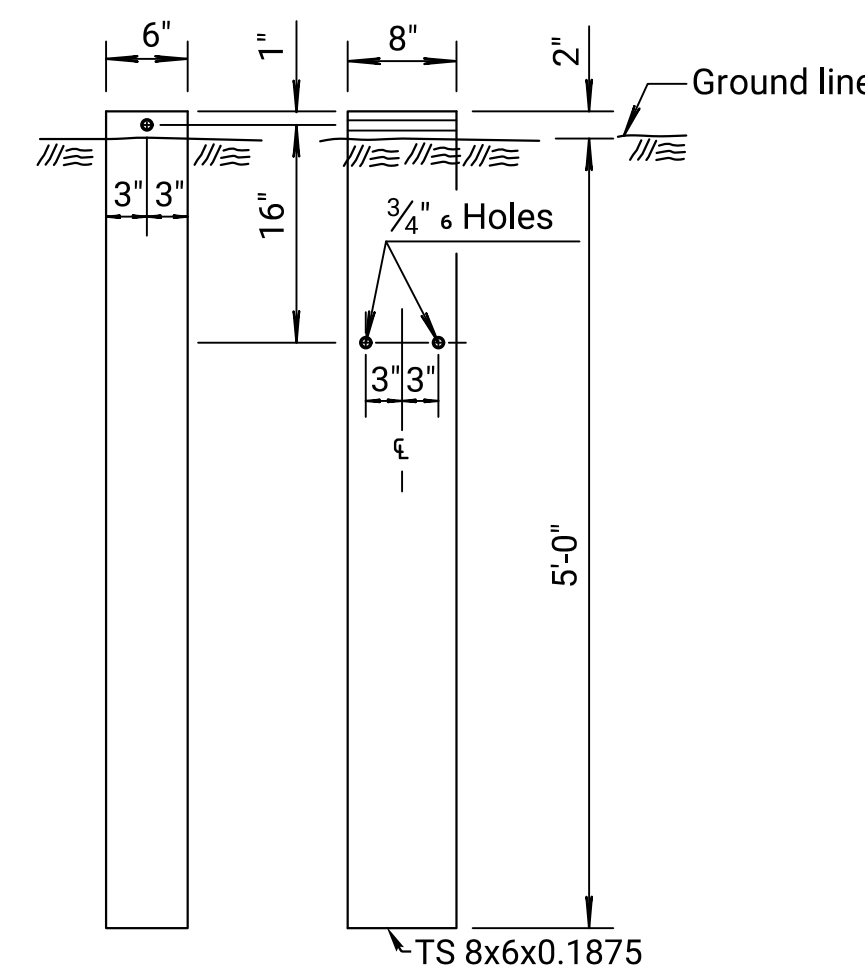
All dimensions are nominal and are subject to manufacturing tolerances. Excavation including rock, shale, and other materials for erection of Guardrail is subsidiary to various bid items for which payment is made.

Where guardrail posts are installed in pavement, form openings in the pavement for the guardrail posts.

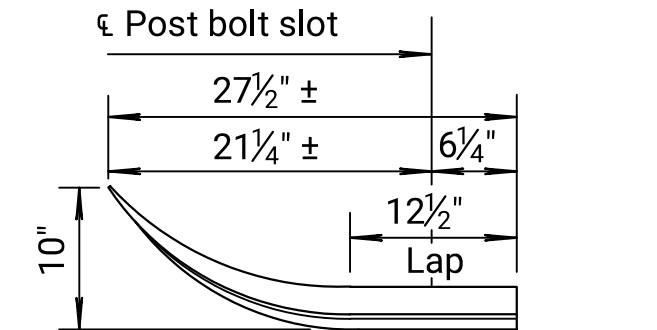
DETAIL OF ANCHOR ASSEMBLY



BEARING PLATE



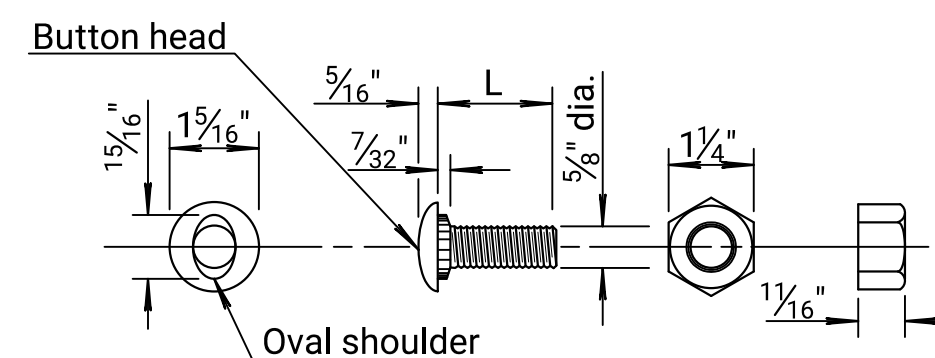
STEEL TUBE



950G END SECTION BY TRINITY HIGHWAY PRODUCTS (OR AN APPROVED EQUAL)

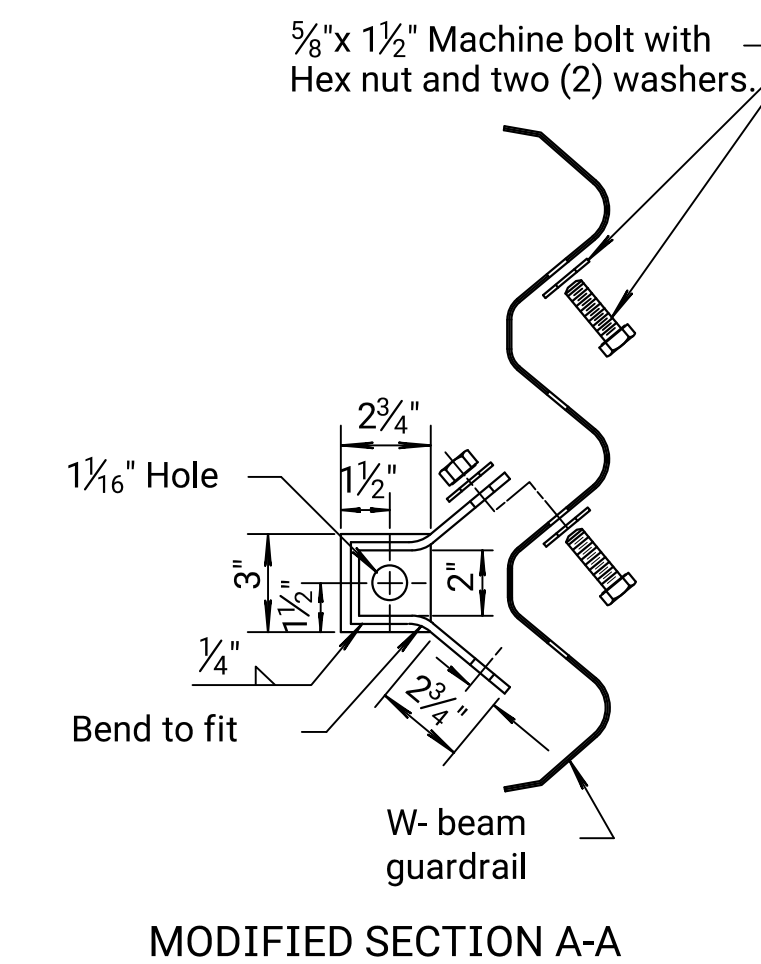
(1 each)
(Subsidiary to Steel Plate Guardrail)

BOLT SIZE SCHEDULE	
Bolt	L
A	8 1/2"
B	1 1/4"
C	18"

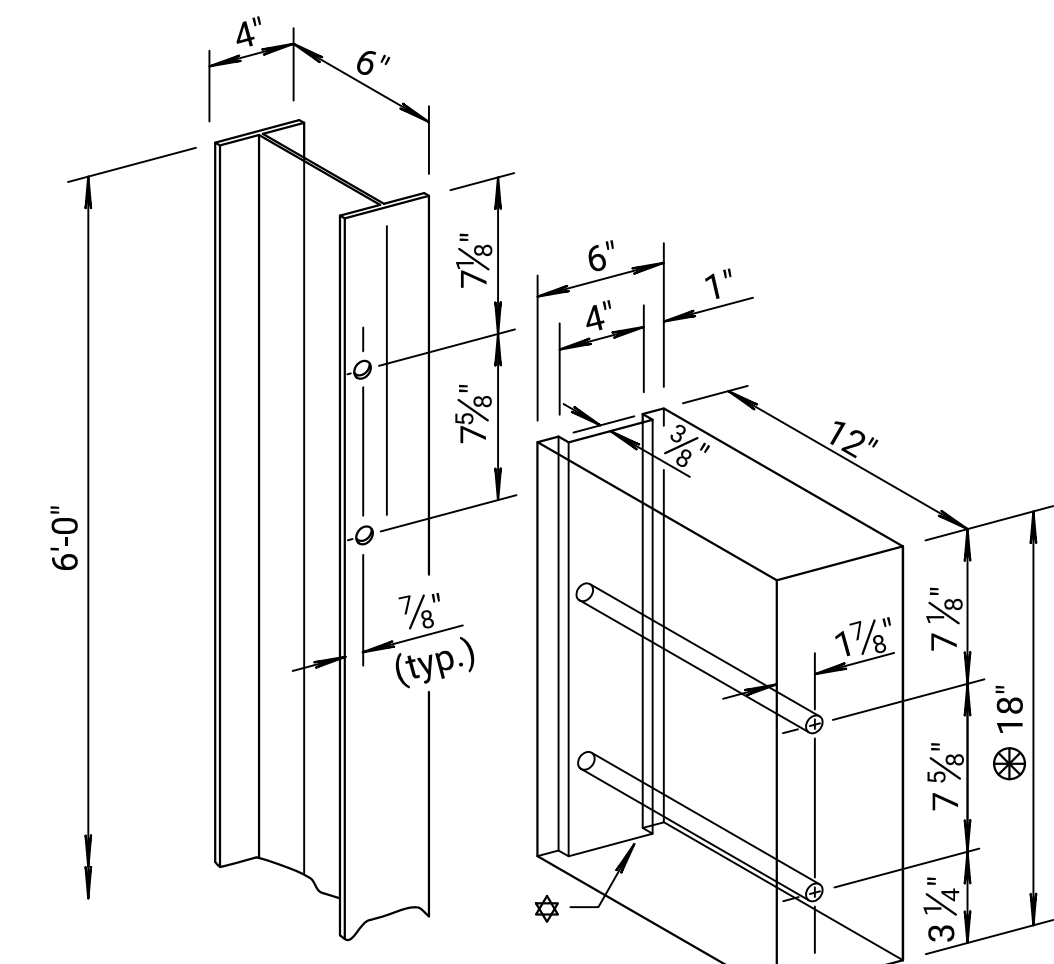


Galvanize all bolts, nuts, and washers in accordance with the KDOT's Standard Specifications.

BOLT & NUT DETAILS

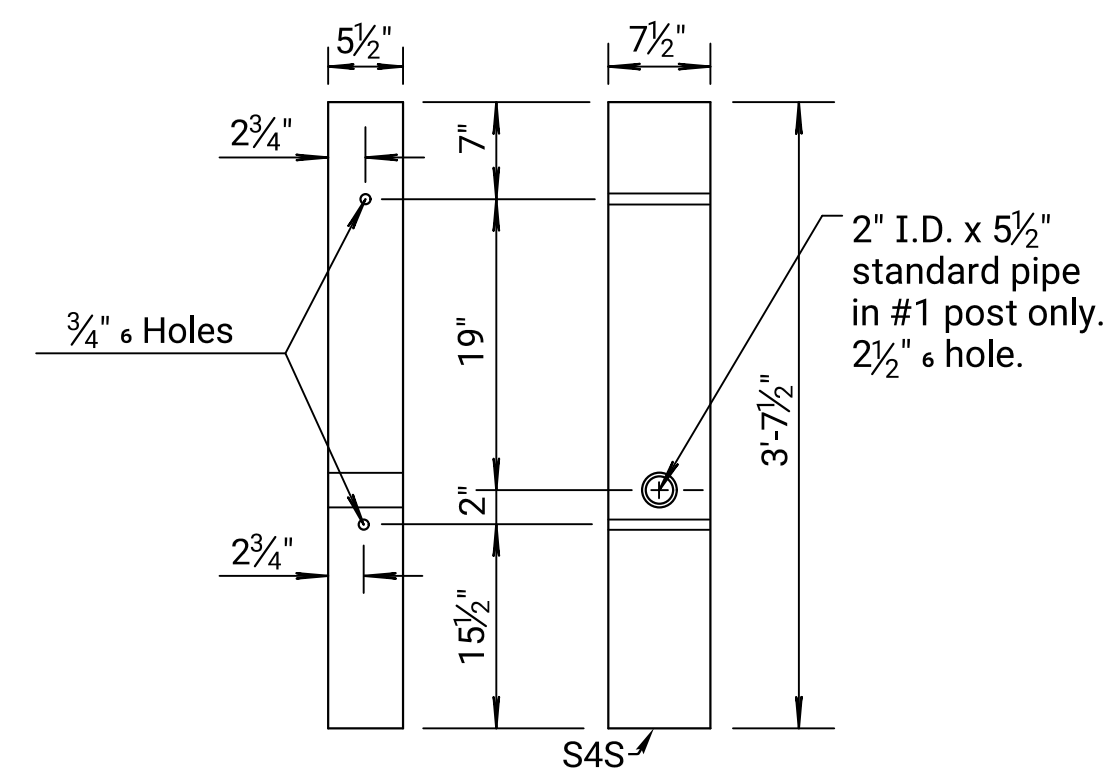


MODIFIED SECTION A-A

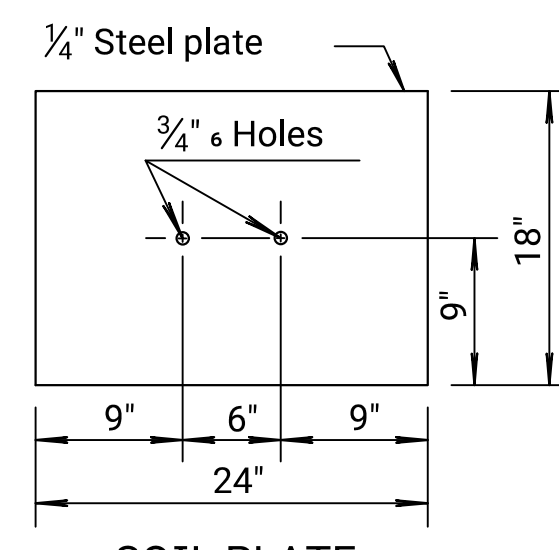


THRIE BEAM HOLE PUNCHING DETAILS

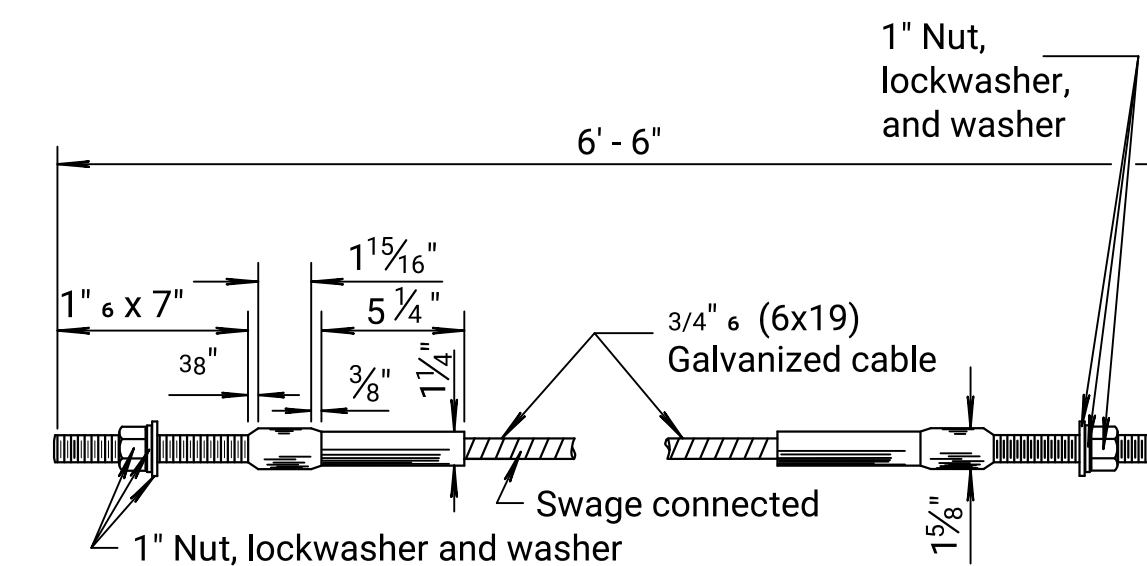
Note: All holes 1 3/16" dia.



BCT WOOD POST

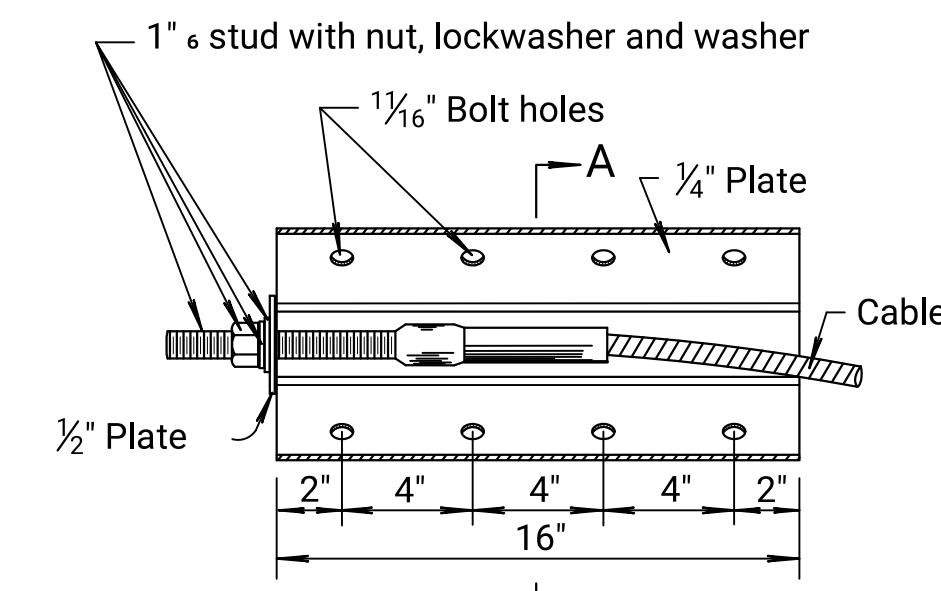


SOIL PLATE



CABLE ASSEMBLY (1 each)

(40,000 lbs. min. breaking strength)
Tighten cable to taut tension.



ANCHOR PLATE

©2022 MKEC Engineering All Rights Reserved www.mkec.com
These drawings and their contents, including, but not limited to, all concepts, designs, & ideas are the exclusive property of MKEC Engineering (MKEC), and may not be used or reproduced in any way without the express consent of MKEC.

GUARDRAIL DETAILS

PROJECT NO.	472-2021-085733	
DATE	12/28/2022	
SCALE	NA	
DESIGNED	DRAWN	CHECKED
SLF	ZSS	JRA

NO.	REVISION	DATE