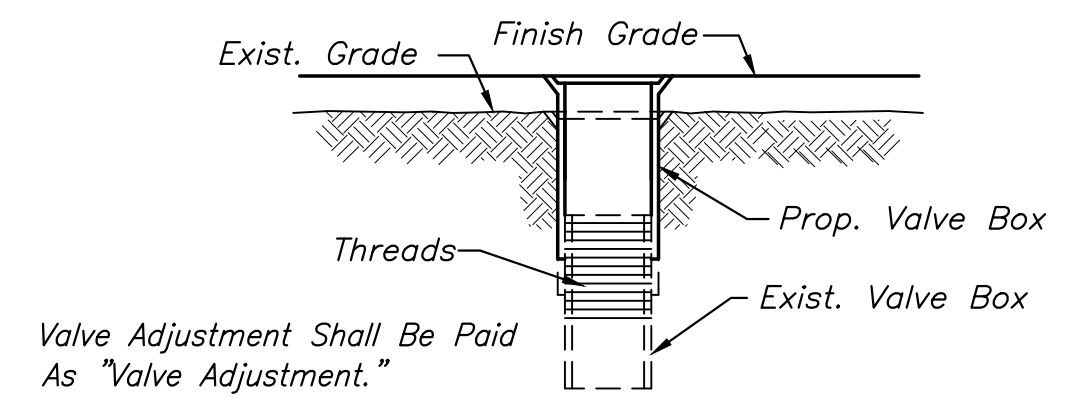
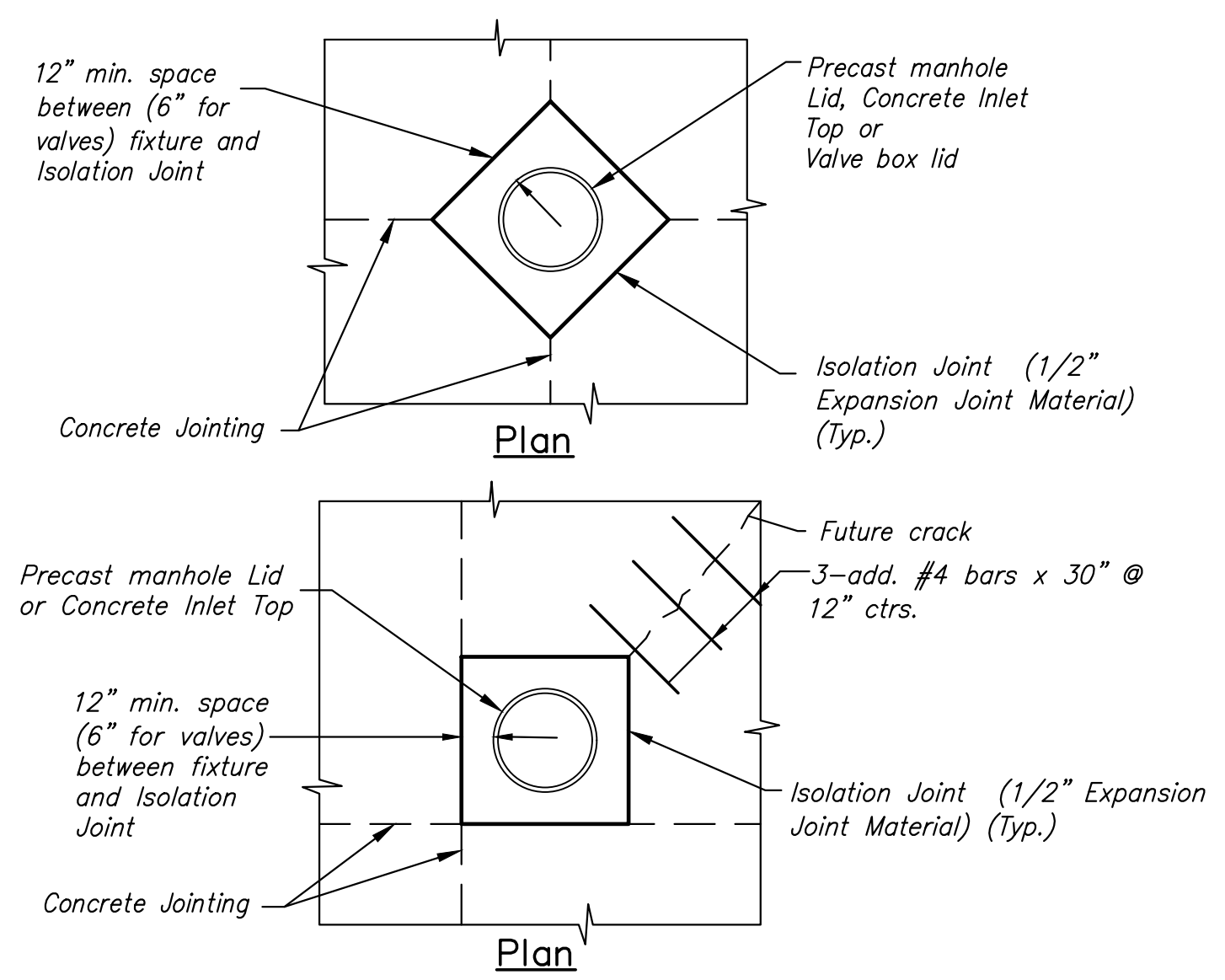


**STORM SEWER TRENCH DETAILS**

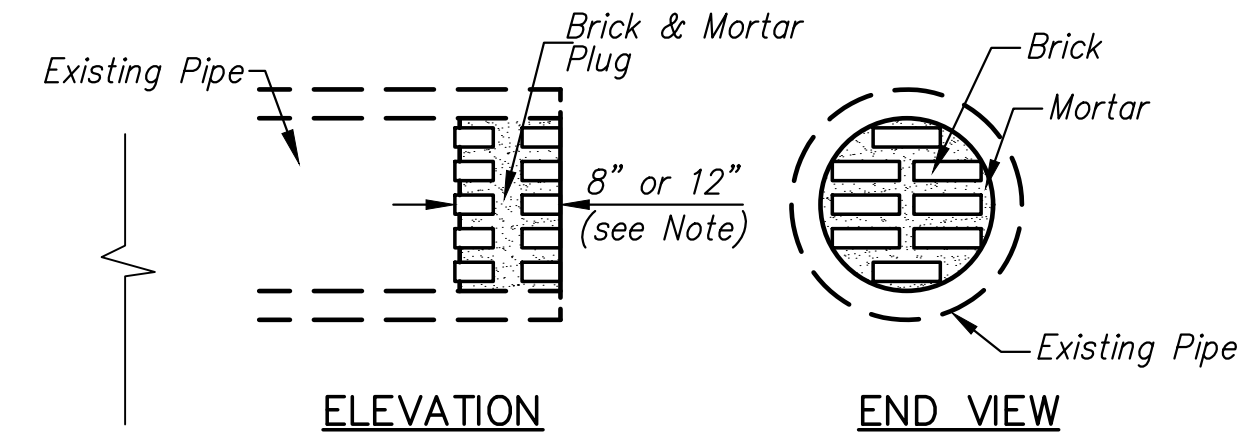


**WATER VALVE BOX ADJUSTMENT DETAIL**



**TYPICAL UTILITY BOX-OUT DETAILS**

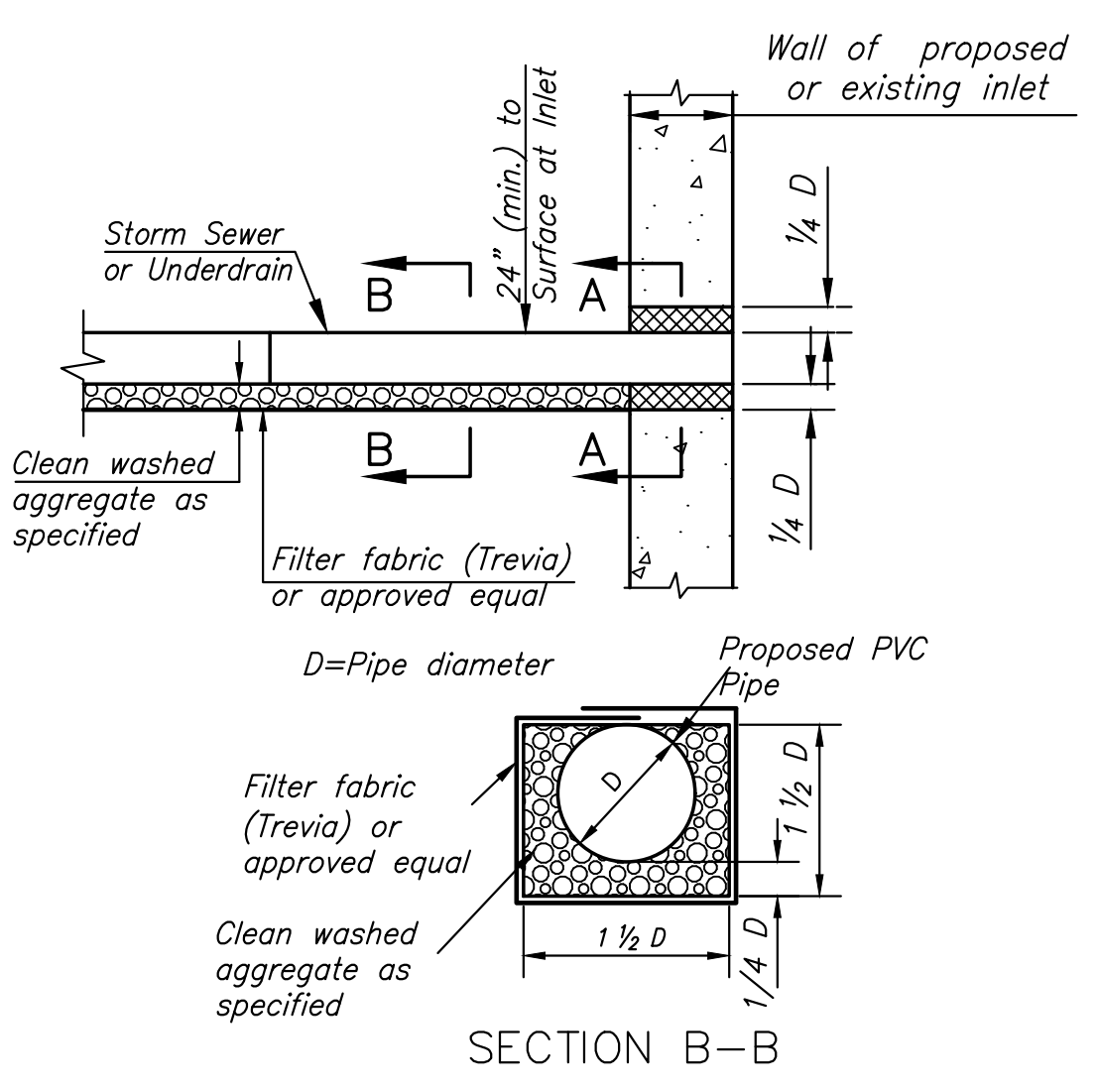
Note: Contractor shall construct box-outs around all surface utility fixtures, as shown, when fixtures fall on or near concrete joints, or as directed by the Engineer. All other fixtures shall have an isolation joint or bond breaker between them and concrete pavement. Cost shall be *subsidiary*.



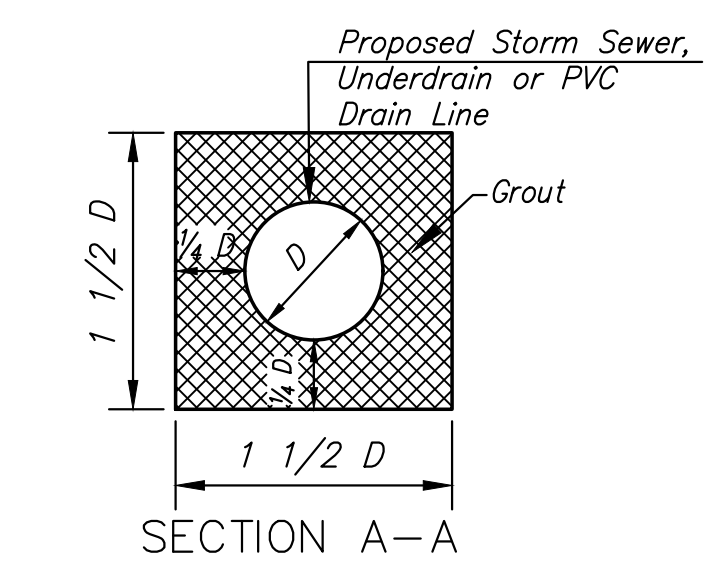
**PIPE PLUGGING DETAIL**

Note: Pipe Plugs Shall Be Constructed Of Brick Masonry, With Construction Requirements And Materials Conforming To The Same Requirements As Specified For A Masonry Construction In The Std. Specs. Pipes Having Diameters Of 18" Or Smaller Shall Be Plugged With 8" Thick Plug. Pipes Having Diameters Larger Than 18" Shall Be Plugged With 12" Thick Plug. The Construction Of Pipe Plugs Shall Not Be Paid For Directly, But Shall Be Considered *Subsidiary* To Pipe Removal.

The Contractor May Use Other Methods To Plug Existing Pipe If Approved By The Project Engineer.

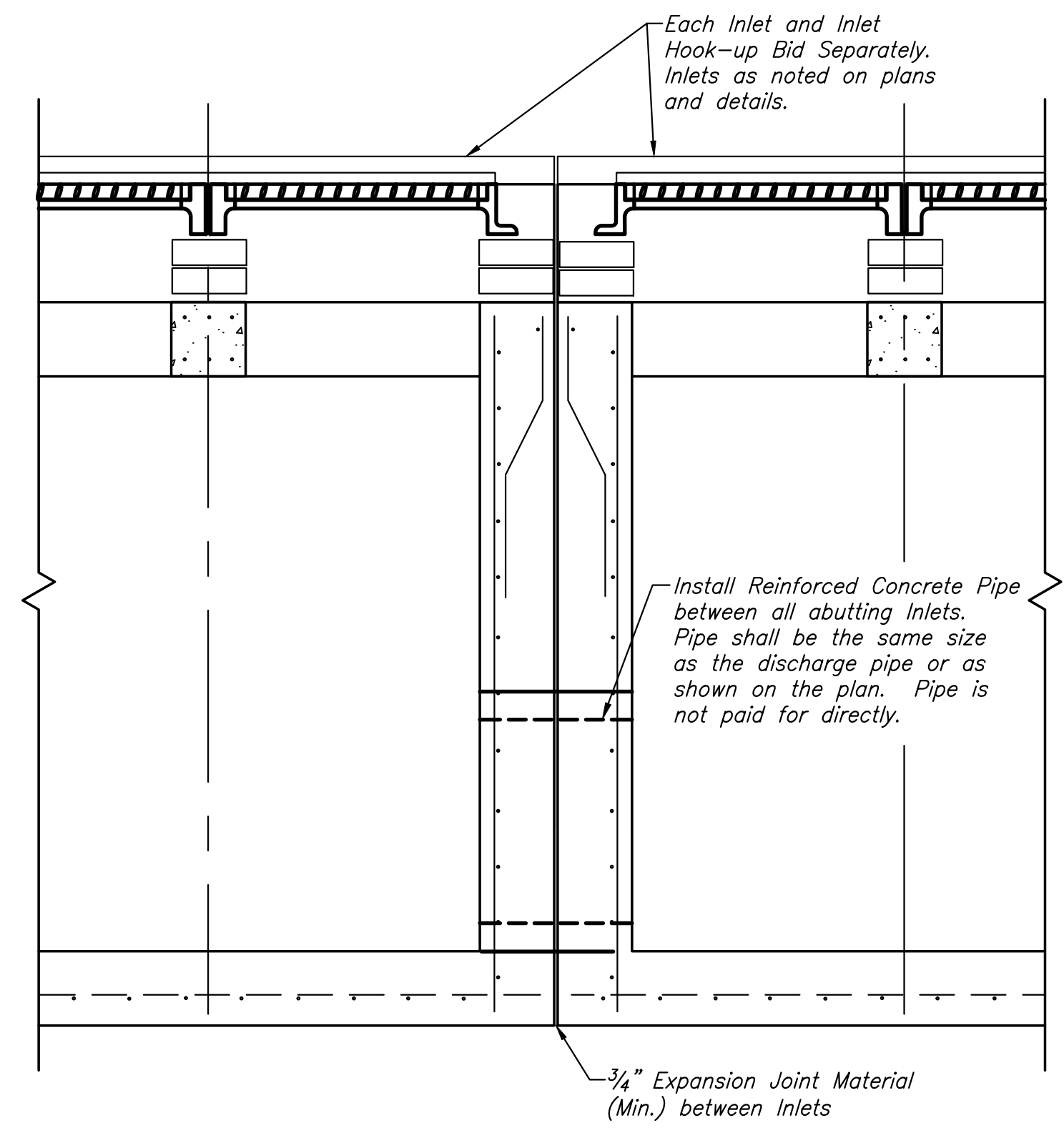


**PIPE CONNECTION DETAIL**

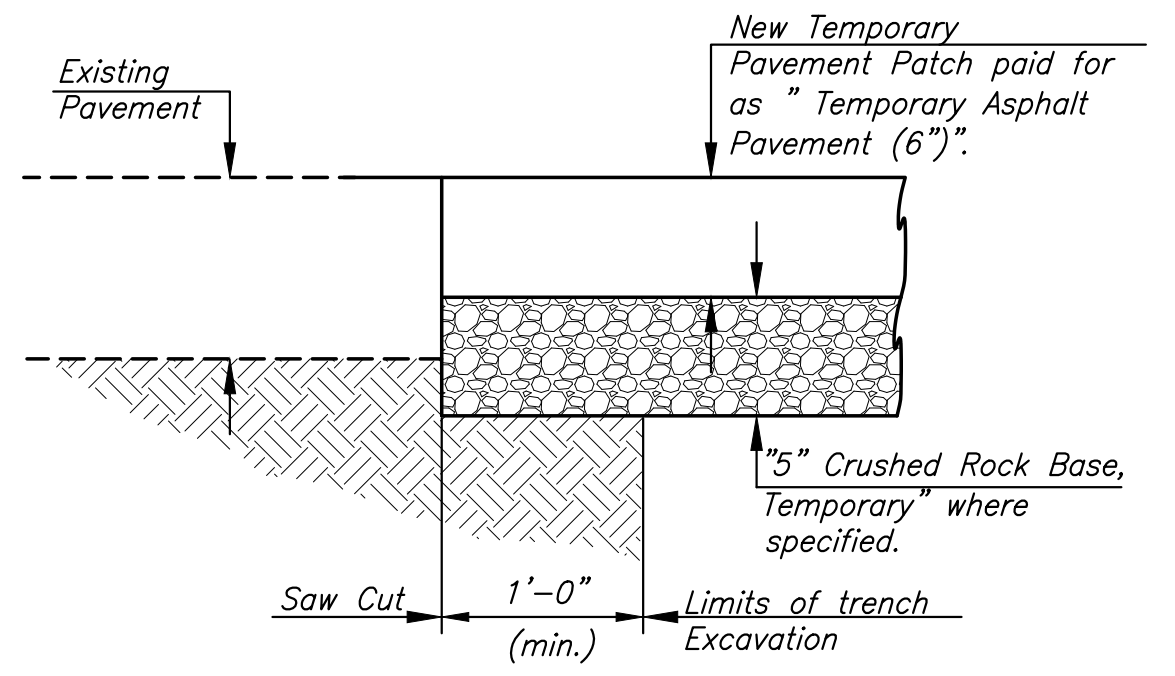


Contractor to remove section from existing (or proposed) structure and patch around pipe.

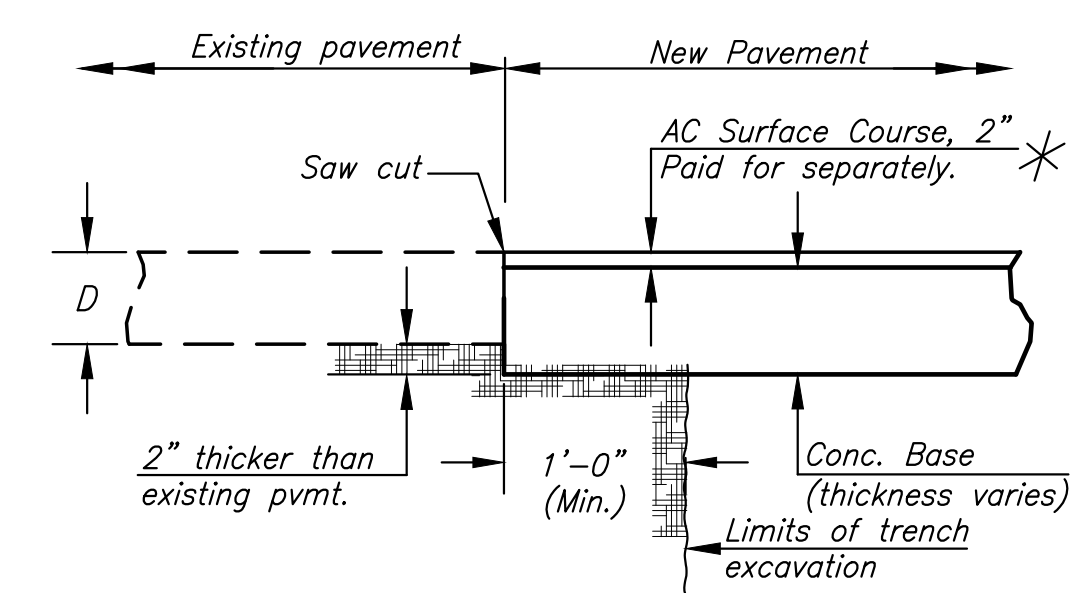
NOTE: A hole shall be made through existing structures as shown to accommodate pipe connections. Round holes are acceptable. Clean gravel and filter fabric around pipe will not be required around concrete storm sewer pipe.



**ABUTTING INLET CONNECTION DETAIL**



**TEMPORARY PAVEMENT PATCH**



**PERMANENT PAVEMENT PATCH DETAIL**

\* For concrete pavements, entire patch shall be concrete at 2" thicker than existing pavement and patch shall be tied to existing concrete with #5 bars x 36" spaced 30" apart drilled and grouted into the existing pavement. For all patches, concrete shall be paid for as "Concrete Pavement Removed and Replaced."

©2022 MKEC Engineering All Rights Reserved www.mkec.com  
These drawings and their contents, including, but not limited to, all concepts, designs, & ideas are the exclusive property of MKEC Engineering (MKEC), and may not be used or reproduced in any way without the express consent of MKEC.

**MISCELLANEOUS DETAILS**

PROJECT NO.	472-2021-085733	
DATE	12/28/2022	
SCALE	NTS	
DESIGNED	DRAWN	CHECKED
SLF	SLF	JRA

NO.	REVISION	DATE