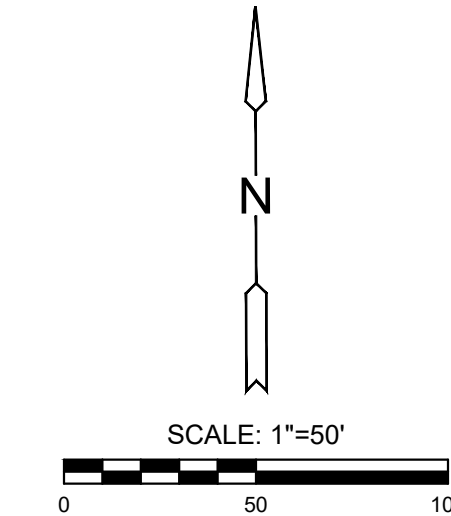
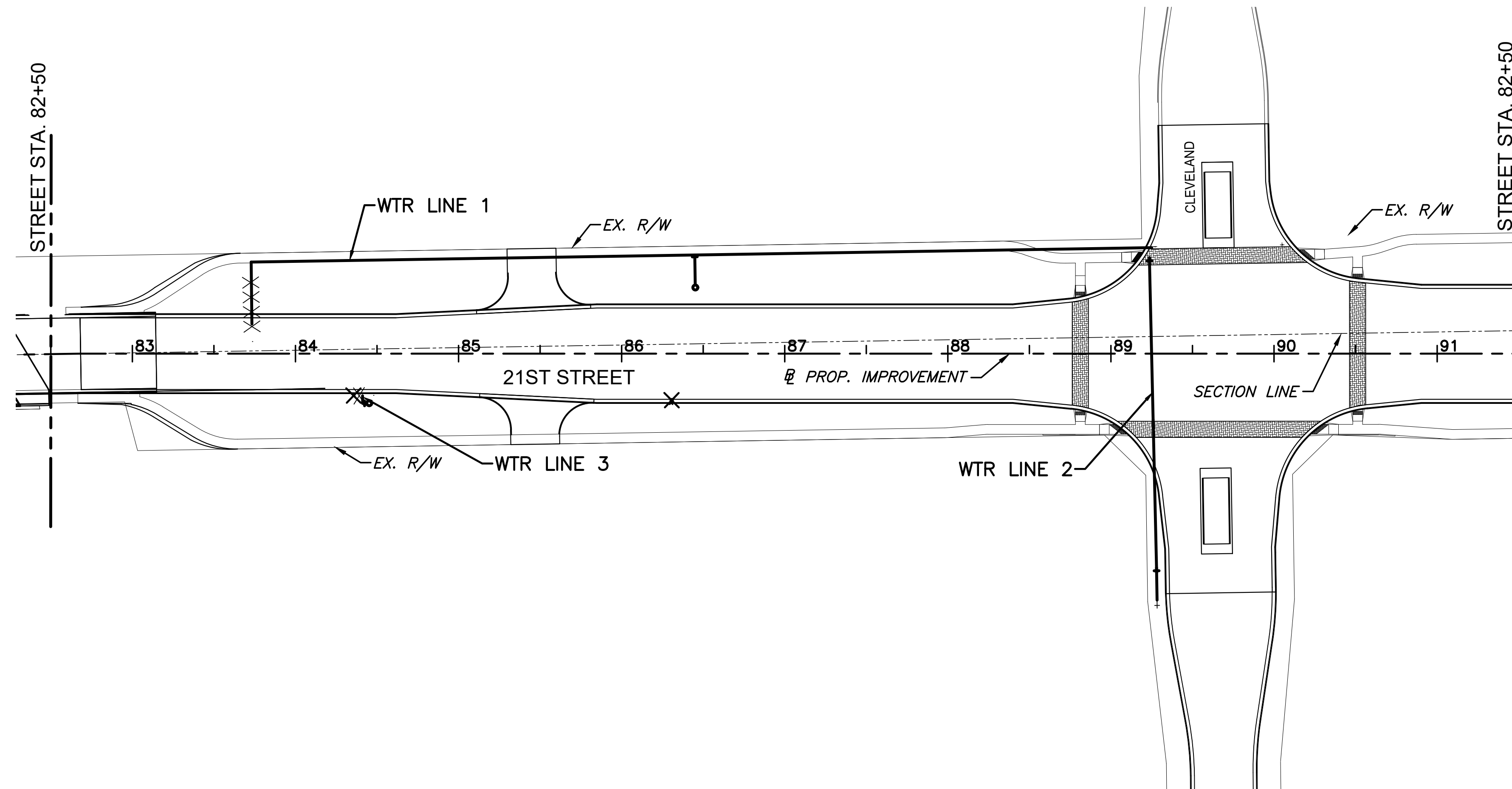


STREET IMPROVEMENTS FOR  
**21ST STREET - MOSLEY TO I-135**  
PHASE 1



REMOVAL OF EXISTING PIPES AND STRUCTURES			
STATION TO STATION	SIDE	ITEM	REMARKS
83+73.25 TO 83+72.50	LT.	23.3 L.F. OF 6" WTR. LINE	
86+30.55 TO 86+30.64	RT.	F.H. ASSEMBLY & VALVE CAN	REMOVE VALVE/CAP LINE
84+36.23	RT.	REMOVE BLOWOFF ASSEMBLY	
84+42.87	RT.	ABANDON VALVE	
84+36.23 TO 84+42.87	RT.	6.6 L.F. OF 8" WTR. LINE	INCLUDING TEE AT 84+41.11

NOTE: ADDITIONAL VALVE ABANDONMENT (VALVE CAN REMOVAL) AND PIPE REMOVAL WILL BE PERFORMED LATER IN THE STORM SEWER AND PAVING PHASES OF THIS PROJECT.

REMOVAL OF BLOWOFF ASSEMBLY SHALL BE PAID FOR BY "REMOVAL OF EXISTING STRUCTURES."

WATER LINE INFORMATION TABLE	
LINE NO.	SHEET NO.
WTR LINE 1	39 & 40
WTR LINE 2	40
WTR LINE 3	41

**LEGEND**  
 ----- LINE REMOVAL  
 X STRUCTURE REMOVAL

©2022  
MKEC Engineering  
All Rights Reserved  
www.mkec.com  
 These drawings and their contents, including, but not limited to, all concepts, designs, & ideas are the exclusive property of MKEC Engineering (MKEC), and may not be used or reproduced in any way without the express consent of MKEC.

**WATER KEY MAP**

PROJECT NO. 472-2021-085733

DATE 12/28/2022

SCALE 1"=50'

DESIGNED DRAWN CHECKED  
SLF BKS JRA

NO. REVISION DATE

SHEET NO.

38 OF 92