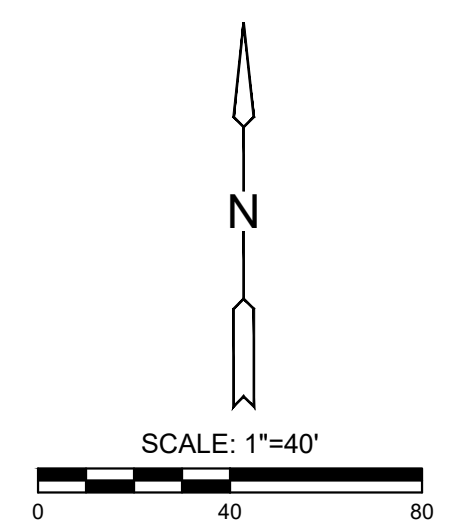
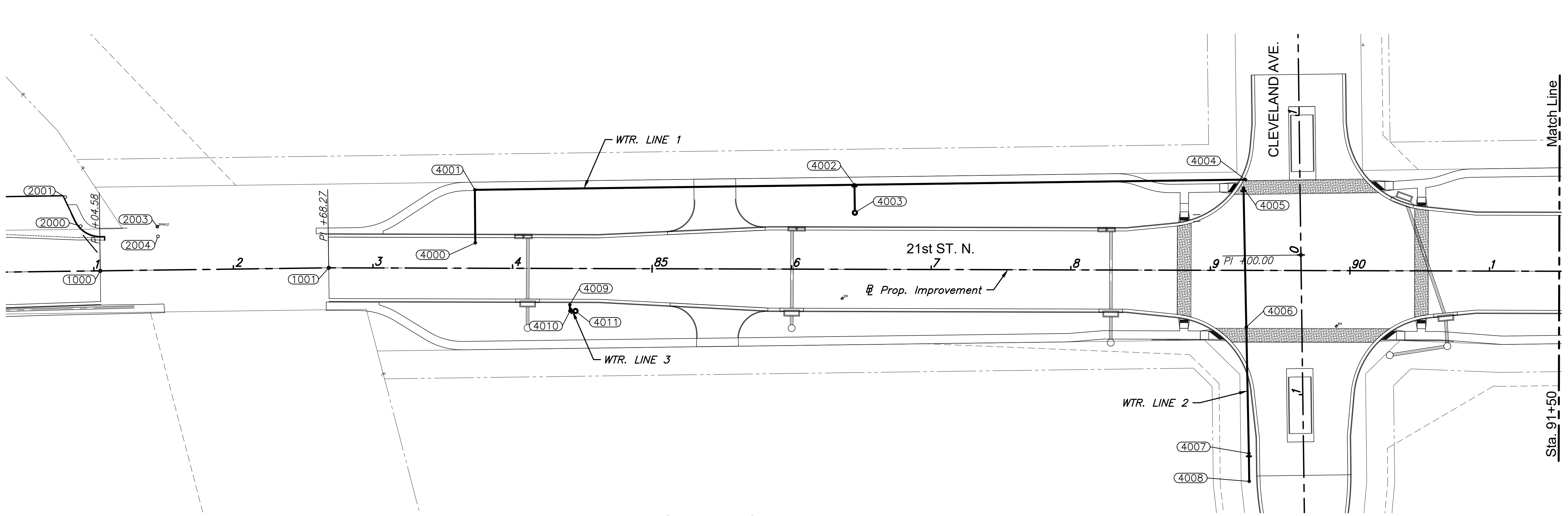
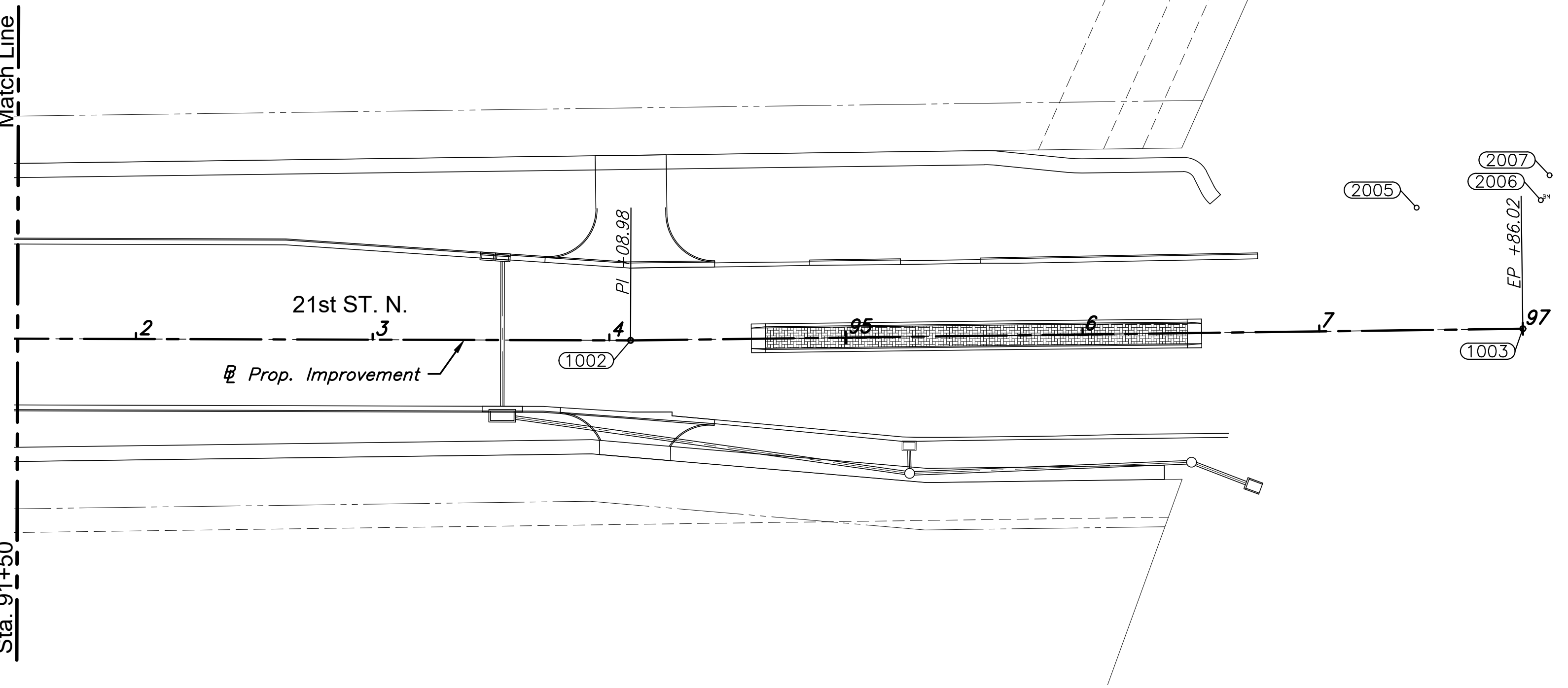


J:\PROJECTS\2021\1010465_COW_21ST STREET FROM MOSLEY TO I-135\00210465 CAD\SHOTS\05 CIVIL\WTR\210465 WTR BUBBLE MAP.DWG
 PLOTTED: Wednesday, December 28, 2022 @ 11:07AM



STREET IMPROVEMENTS FOR
21ST STREET - MOSLEY TO I-135
 PHASE 1



PROJECT CONTROL AND INFORMATION

- BENCHMARK #01**
COW Brass Disk "KDOT" on NE Corner of 21st Street drainage structure over the East Fork Chisholm Creek
Elevation=1311.92 (NAVD88)
- BENCHMARK #02**
Square Box set in top NW corner of 21st Street drainage structure headwall over the Wichita Drainage Canal.
Elevation=1311.46 (NAVD88)
- BENCHMARK #03**
COW Brass Disk "KDOT" on NE Corner of 21st Street drainage structure over the East Fork Chisholm Creek
Elevation=1311.92 (NAVD88)
- CONTROL POINT #02**
TOP BRACE POST CHAIN LINK FNC th
Elevation=1309.47
- CONTROL POINT #03**
FOR BM COW ENVIRONMENT AND HEALTH SWL-05
Elevation=1312.27
- CONTROL POINT #10**
FRONT OF CONC CURB
Elevation=1307.39
- CONTROL POINT #11**
XC SET IN SQ CUT
Elevation=1308.09
- CONTROL POINT #12**
BOL SZ3 RP
Elevation=1308.36

Horizontal Datum: NAD83(2011) Kansas State Plane, South Zone, US Survey Foot Grid to ground C.A.F. 0.99988 (SPC/CAF=Ground)
 GPS Scale Point N: 0.00 E:0.00
 Vertical Datum: NAVD88 (Geoid18)

BASELINE POINTS				
POINT #	NORTHING	EASTING	STATION/OFFSET	DESC.
1000	1699188.318	1652404.490	81+04.58/0.00'	BL
1001	1699190.483	1652568.162	82+68.27/0.00'	BL
1002	1699187.290	1653708.865	94+08.98/0.00'	BL
1003	1699192.218	1654085.872	97+86.02/0.00'	BL

WATER POINTS				
POINT #	NORTHING	EASTING	STATION/OFFSET	DESC.
4000	1699208.340	1652673.195	83+73.25/18.15' LT.	EX. VALVE
4001	1699246.335	1652672.881	83+72.83/56.14' LT.	90° BEND
4002	1699249.933	1652944.861	86+44.80/60.50' LT.	FH ASSY.
4003	1699229.935	1652945.151	86+45.15/40.51' LT.	FH
4004	1699253.640	1653225.055	89+24.98/65.00' LT.	TAPPING TEE
4005	1699247.490	1653223.637	89+23.58/58.84' LT.	ANCH. VALVE ASSY.
4006	1699148.053	1653225.645	89+25.87/40.59' RT.	PVI
4007	1699057.495	1653227.473	89+27.95/131.14' RT.	ANCHOR VALVE ASSY. SPECIAL
4008	1699037.496	1653227.719	89+28.25/151.14' RT.	BLOW OFF VALVE
4009	1699164.115	1652740.934	84+41.12/25.88' RT.	EX. TEE
4010	1699159.500	1652740.996	84+41.19/30.50' RT.	FH ASSY.
4011	1699159.553	1652744.995	84+45.19/30.43' RT.	FH

CONTROL POINTS				
POINT #	NORTHING	EASTING	STATION/OFFSET	DESC.
2000	1699220.345	1652390.458	80+90.98/32.21' LT.	CP#11
2001	1699241.116	1652379.371	80+80.17/53.13' LT.	CP#12
2003	1699219.975	1652445.340	81+45.85/31.11' LT.	BM#2
2004	1699212.998	1652445.778	81+46.19/24.13' LT.	CP#10
2005	1699243.379	1654040.957	97+41.77/51.74' LT.	CP#3
2006	1699246.560	1654093.431	97+94.29/54.24' LT.	BM#1
2007	1699257.100	1654097.128	97+98.12/64.73' LT.	CP#2

©2022 MKEC Engineering All Rights Reserved www.mkec.com
 These drawings and their contents, including, but not limited to, all concepts, designs, & ideas are the exclusive property of MKEC Engineering (MKEC), and may not be used or reproduced in any way without the express consent of MKEC.

WATER BUBBLE MAP

PROJECT NO.	472-2021-085733	
DATE	12/28/2022	
SCALE	1"=40'	
DESIGNED	DRAWN	CHECKED
SLF	WNJ	JRA
NO.	REVISION	DATE

SHEET NO.
42 OF 92