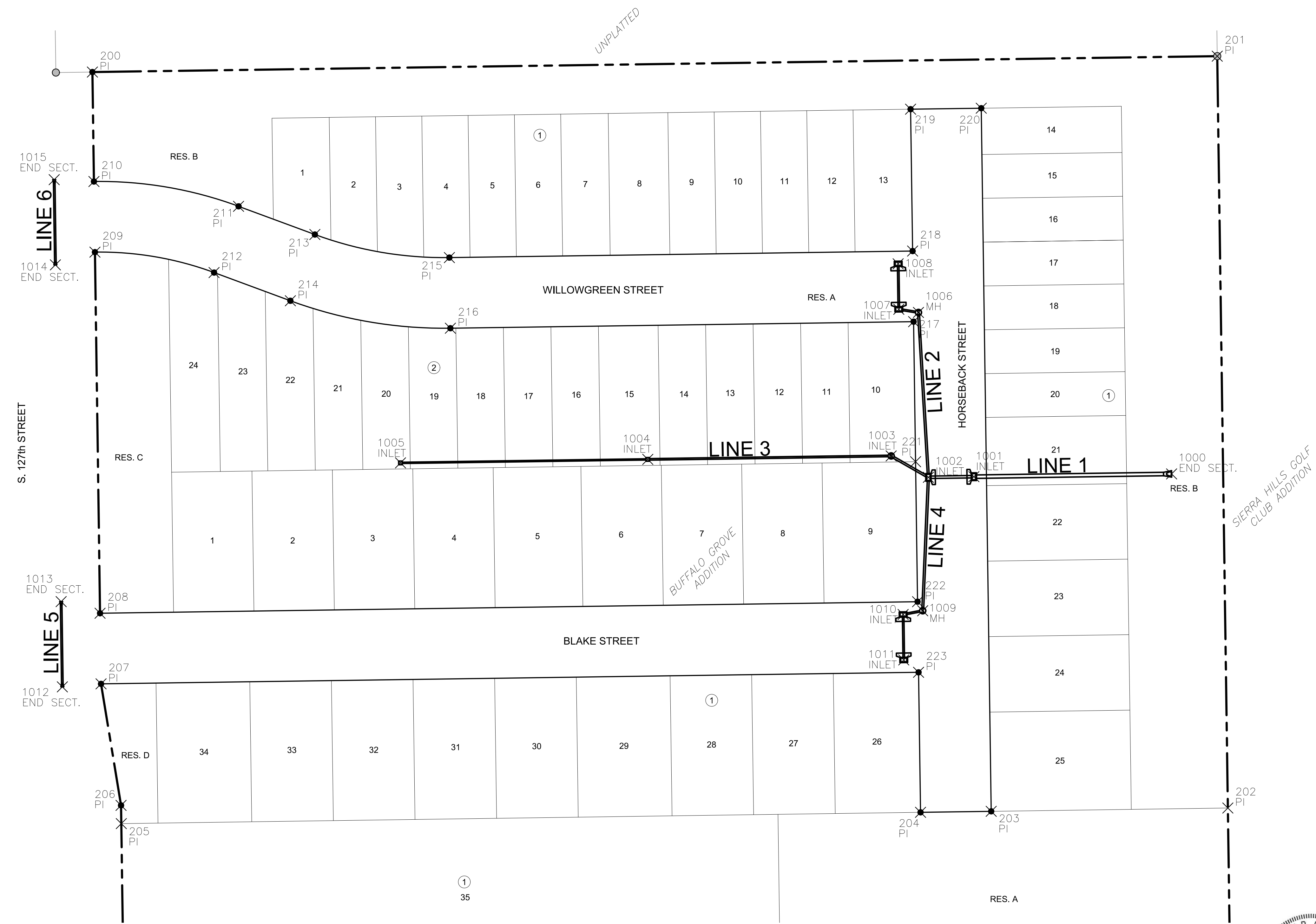


J:\PROJECTS\2020\201010706_SCHROEDER_127TH AND PAWNEE\00_20706 CAD\SHOTS\05 CIVIL\SWIS\20706_SWS_BUBBLE_MAP.DWG
 PLOTTED: Thursday, January 12, 2023 @ 08:33AM



PLAT POINTS			
Point #	Northing	Easting	Desc.
200	1674231.67	1691968.77	PI
201	1674244.71	1692892.05	PI
202	1673627.27	1692900.78	PI
203	1673624.53	1692706.52	PI
204	1673623.71	1692648.52	PI
205	1673614.44	1691992.49	PI
206	1673629.44	1691992.27	PI
207	1673729.22	1691975.86	PI
208	1673787.21	1691975.04	PI
209	1674083.77	1691970.85	PI
210	1674141.76	1691970.04	PI
211	1674121.39	1692088.74	PI
212	1674066.99	1692068.63	PI
213	1674098.24	1692151.38	PI
214	1674043.84	1692131.27	PI
215	1674079.29	1692261.79	PI
216	1674021.30	1692262.61	PI
217	1674026.67	1692642.83	PI
218	1674084.66	1692642.01	PI
219	1674201.15	1692640.37	PI
220	1674201.97	1692698.36	PI
221	1673911.68	1692644.46	PI
222	1673796.69	1692646.08	PI
223	1673738.70	1692646.90	PI

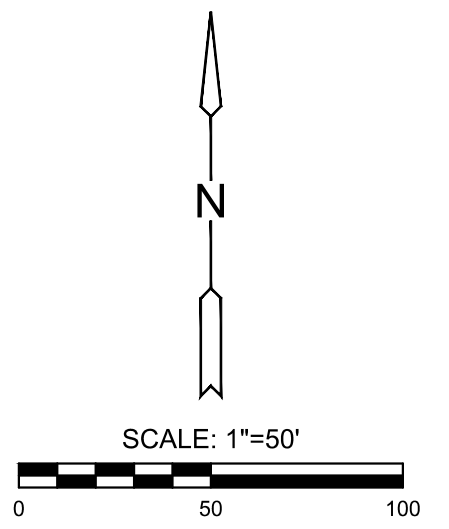
STORM WATER SEWER POINTS			
Point #	Northing	Easting	Desc.
1000	1673901.62	1692854.62	END SECT.
1001	1673899.36	1692692.30	INLET
1002	1673898.83	1692654.97	INLET
1003	1673916.40	1692624.39	INLET
1004	1673913.58	1692424.65	INLET
1005	1673910.71	1692221.67	INLET
1006	1674034.23	1692646.83	MH
1007	1674036.83	1692630.69	INLET
1008	1674074.16	1692630.16	INLET
1009	1673789.25	1692650.29	MH
1010	1673786.19	1692634.23	INLET
1011	1673748.86	1692634.75	INLET
1012	1673726.77	1691944.10	END SECT.
1013	1673796.76	1691943.11	END SECT.
1014	1674073.31	1691938.38	END SECT.
1015	1674143.30	1691937.39	END SECT.



BENCHMARKS

BM & CP-100
 N:1673873.821 E:1691836.443 EL:1356.26
 MAG NAIL SET IN A FOUND SQUARE CUT ON SOUTH
 END OF WEIR WALL, 57'2" NORTH AND 7' WEST OF THE
 CENTERLINE OF 127TH ST. E. & PAWNEE

 CP-101
 N:1674242.41 E:1691958.454 EL:1353.155
 5/8" REBAR WITH ALUMINUM CONTROL CAP



DATUM

The Horizontal Datum is based on the Kansas Coordinate System of 1983, NAD83(2011), EPOCH:2010.0000, South Zone. Coordinates shown have been modified to the ground using a combined adjustment factor of 1.0001200144. State Plane coordinates can be calculated by multiplying the shown values by 0.99988.

All elevations shown are based on the NAVD 88 vertical datum, Geoid12b.

NOTE

All Control Points shown have elevations established using standard surveying procedures and can be used as temporary benchmarks. When using a Control point as a temporary benchmark, it is recommended that cross-checks be made to other control points or benchmarks to confirm elevations prior to use.



STORMWATER SEWER PLANS FOR

BUFFALO GROVE ADDITION

WICHITA, KANSAS

©2022
 MKEC Engineering
 All Rights Reserved
 www.mkec.com
 These drawings and their contents, including, but not limited to, all concepts, designs, & ideas are the exclusive property of MKEC Engineering (MKEC), and may not be used or reproduced in any way without the express consent of MKEC.

BUBBLE MAP

PROJECT NO.	458-2022-085513
DATE	JAN 2023
SCALE	1" = 50'
DESIGNED	KPG
DRAWN	MKEC
CHECKED	KPG

NO.	REVISION	DATE