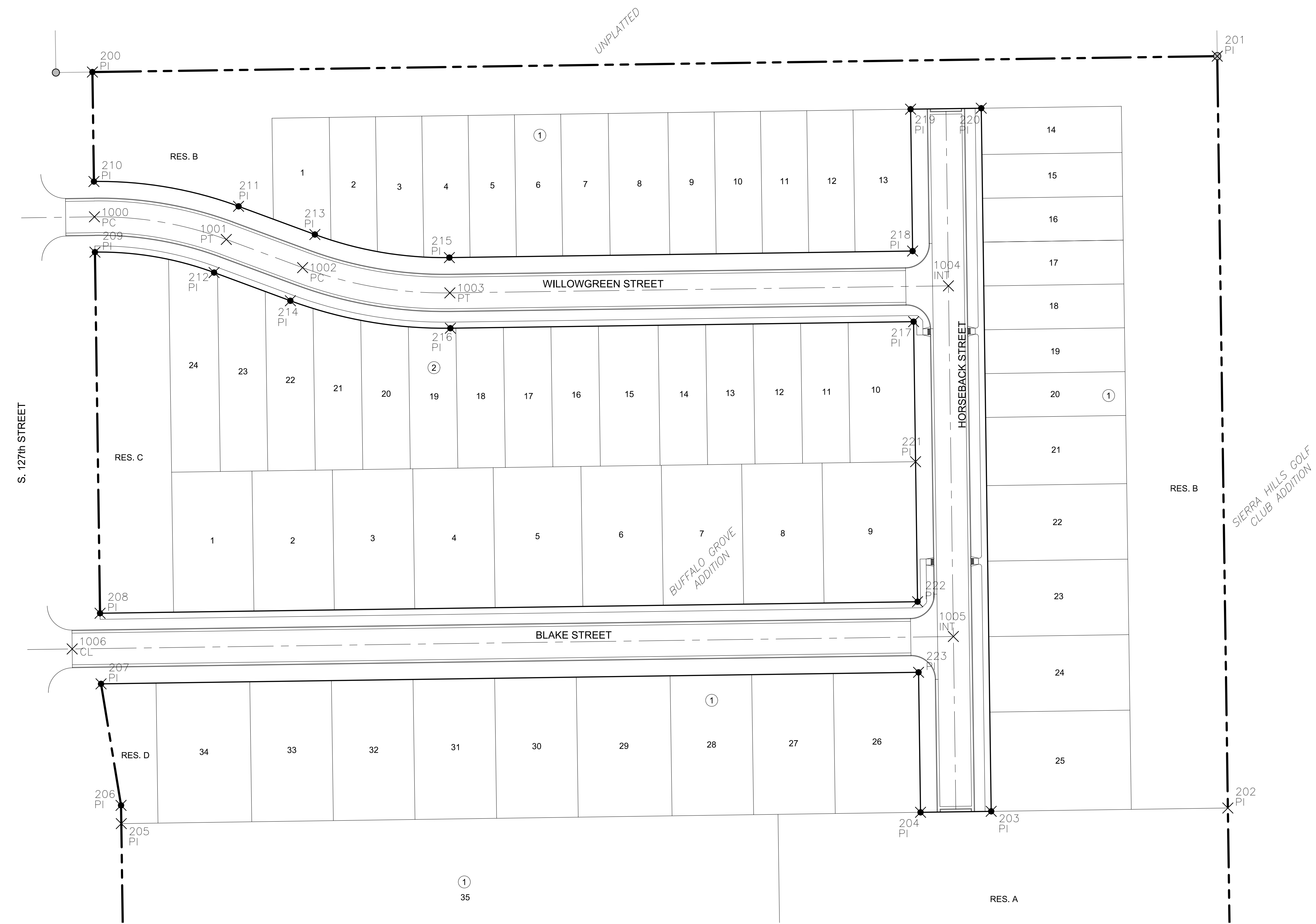


PLOTTED: Thursday, January 12, 2023 @ 08:26AM

J:\PROJECTS\2020\201010706_SCHROEDER_127TH AND PAWNEE\00706 CAD\SHOTS\05 CIVIL\PAV\20706_PAV_BUBBLE MAP.DWG



PLAT POINTS			
Point #	Northing	Easting	Desc.
200	1674231.67	1691968.77	PI
201	1674244.71	1692892.05	PI
202	1673627.27	1692900.78	PI
203	1673624.53	1692706.52	PI
204	1673623.71	1692648.52	PI
205	1673614.44	1691992.49	PI
206	1673629.44	1691992.27	PI
207	1673729.22	1691975.86	PI
208	1673787.21	1691975.04	PI
209	1674083.77	1691970.85	PI
210	1674141.76	1691970.04	PI
211	1674121.39	1692088.74	PI
212	1674066.99	1692068.63	PI
213	1674098.24	1692151.38	PI
214	1674043.84	1692131.27	PI
215	1674079.29	1692261.79	PI
216	1674021.30	1692262.61	PI
217	1674026.67	1692642.83	PI
218	1674084.66	1692642.01	PI
219	1674201.15	1692640.37	PI
220	1674201.97	1692698.36	PI
221	1673911.68	1692644.46	PI
222	1673796.69	1692646.08	PI
223	1673738.70	1692646.90	PI

PAVING POINTS			
Point #	Northing	Easting	Desc.
1000	1674112.77	1691970.45	PC
1001	1674094.19	1692078.69	PT
1002	1674071.04	1692141.33	PC
1003	1674050.30	1692262.20	PT
1004	1674056.08	1692671.42	INT
1005	1673768.11	1692675.49	INT
1006	1673757.89	1691952.16	CL



PAVING IMPROVEMENTS FOR
BUFFALO GROVE ADDITION
 WICHITA, KANSAS

©2023 MKEC Engineering All Rights Reserved www.mkec.com
 These drawings and their contents, including, but not limited to, all concepts, designs, & ideas are the exclusive property of MKEC Engineering (MKEC), and may not be used or reproduced in any way without the express consent of MKEC.

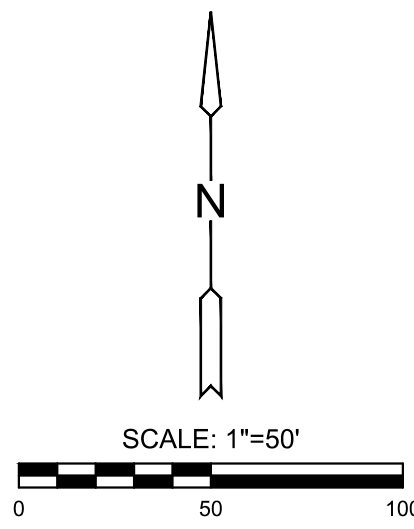


BUBBLE MAP

PROJECT NO.	472-2022-085818	
DATE	JAN 2023	
SCALE	1" = 50'	
DESIGNED	KPG	
DRAWN	MKEC	
CHECKED	KPG	
NO.	REVISION	DATE

BENCHMARKS

BM & CP-100
 N:1673873.821 E:1691836.443 EL:1356.26
 MAG NAIL SET IN A FOUND SQUARE CUT ON SOUTH END OF WEIR WALL, 57'2" NORTH AND 7' WEST OF THE CENTERLINE OF 127TH ST. E. & PAWNEE
 CP-101
 N:1674242.41 E:1691958.454 EL:1353.155
 5/8" REBAR WITH ALUMINUM CONTROL CAP



DATUM

The Horizontal Datum is based on the Kansas Coordinate System of 1983, NAD83(2011), EPOCH:2010.0000, South Zone. Coordinates shown have been modified to the ground using a combined adjustment factor of 1.0001200144. State Plane coordinates can be calculated by multiplying the shown values by 0.99988.

All elevations shown are based on the NAVD 88 vertical datum, Geoid12b.

NOTE

All Control Points shown have elevations established using standard surveying procedures and can be used as temporary benchmarks. When using a Control point as a temporary benchmark, it is recommended that cross-checks be made to other control points or benchmarks to confirm elevations prior to use.