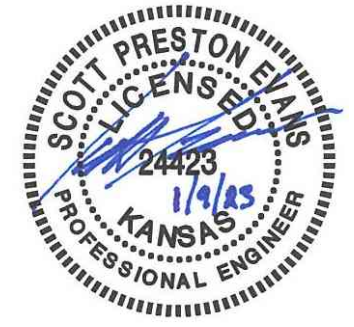


PLOTTED: Friday, January 06, 2023 @ 06:02PM

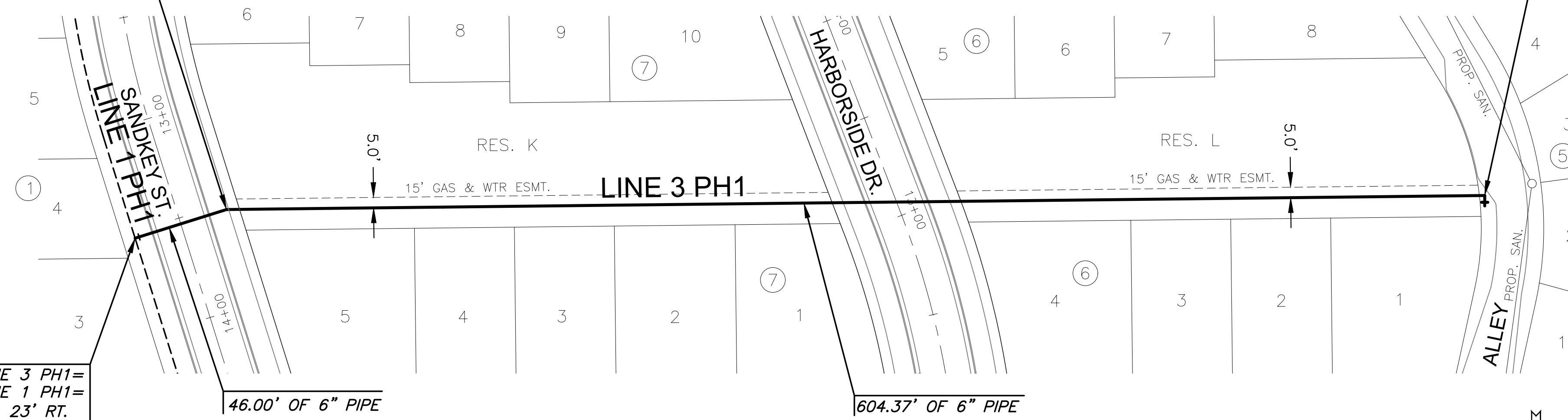
J:\PROJECTS\2022\12\10\10427_PERFECTION_COURTYARDS AT MOORINGS\DWG 2\10427 CAD\SH1\505_CIVIL\WTR\21427-05-2027.DWG



STA. 10+46.00, LINE 3 PH1=
ST. STA. 13+52.89, 23' LT.
1-6" DIMJ 22.5' BEND

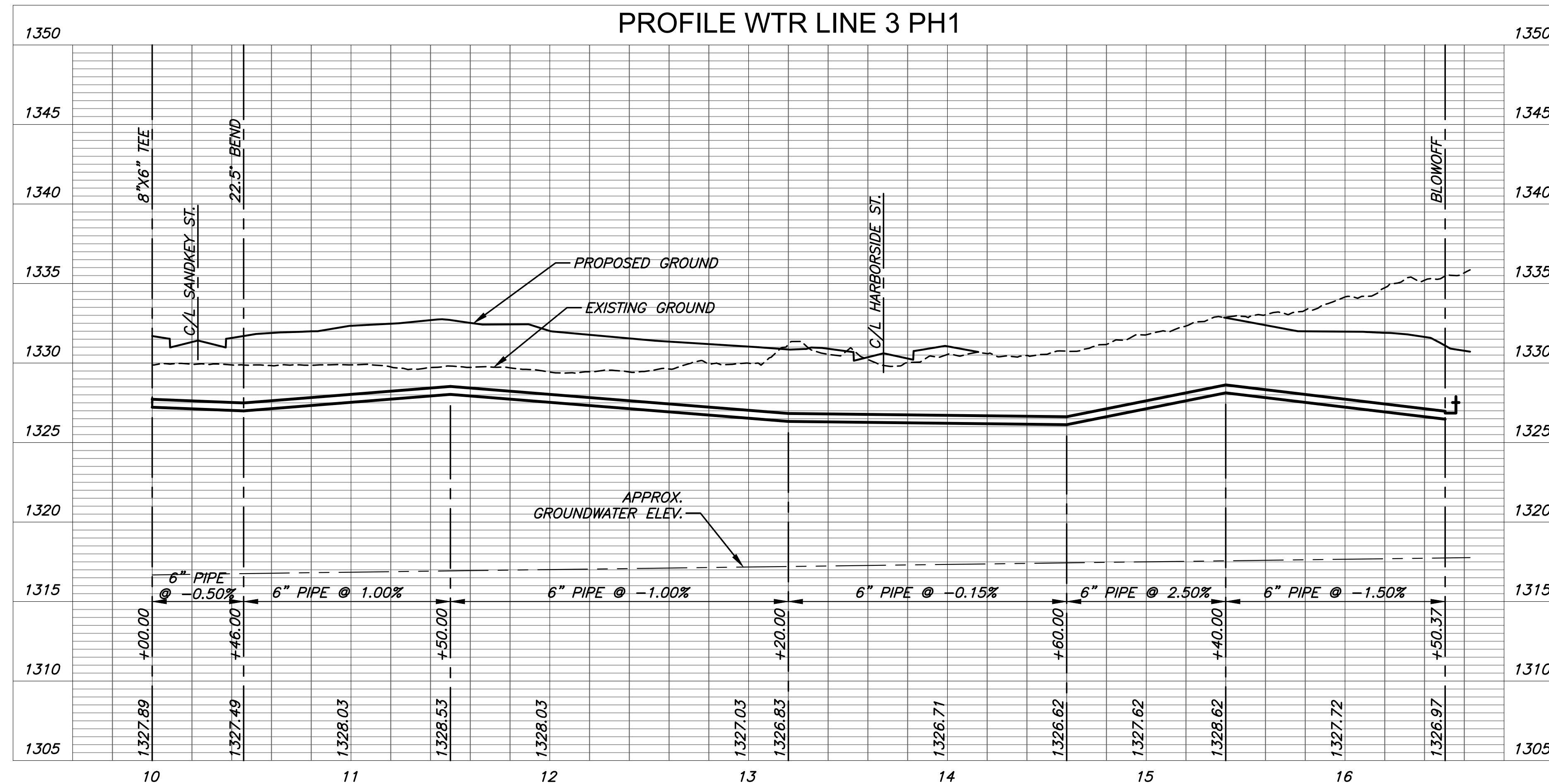
STA. 16+50.37, LINE 3 PH1
1-2" BLOWOFF
VALVE BOX ELEV=1331.1

STA. 10+00.00, LINE 3 PH1=
STA. 12+08.37, LINE 1 PH1=
ST. STA. 13+52.89, 23' RT.
8"x6" DIMJ TEE & VALVE



NOTE:
CONTRACTOR TO VERIFY LOCATION
AND ELEVATION OF EXISTING WATER
LINE PRIOR TO CONSTRUCTION.

PLAN WTR LINE 3 PH1
PROFILE WTR LINE 3 PH1



WATER DISTRIBUTION PLANS FOR

COURTYARDS AT THE MOORINGS

PHASE 1

©2023
MKEC Engineering
All Rights Reserved
www.mkec.com
These drawings and their contents,
including, but not limited to, all concepts,
designs, & ideas are the exclusive
property of MKEC Engineering (MKEC),
and may not be used or reproduced in any
way without the express consent of MKEC.

LINES 3

PROJECT NO.	448-2022-024800	
DATE	JAN 2023	
SCALE	1" = 40'	
DESIGNED	DRAWN	CHECKED
DFL	JWC	SPE

NO.	REVISION	DATE

SHEET NO.