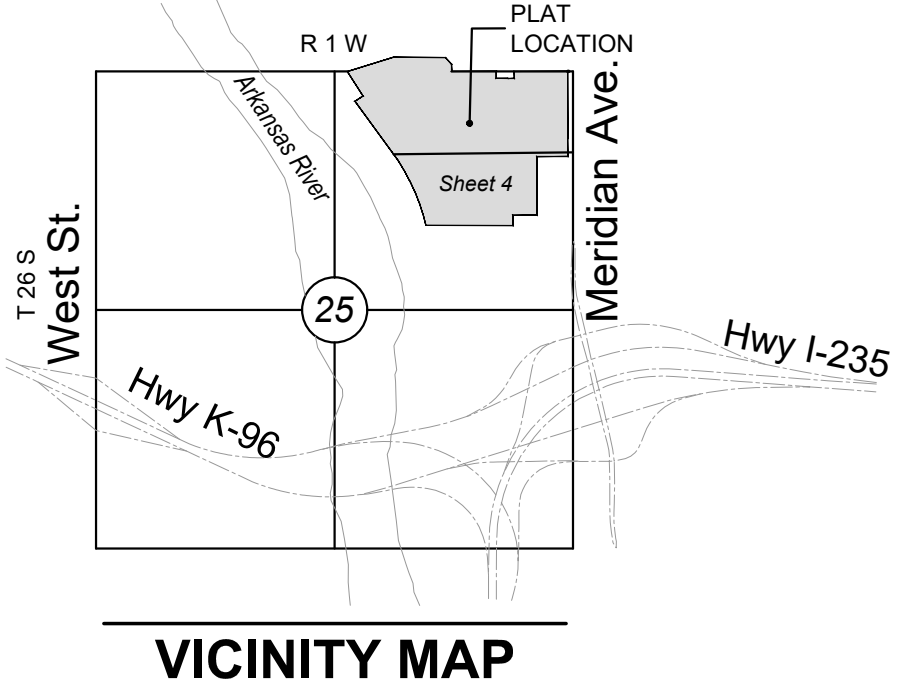


# COURTYARDS AT THE MOORINGS ADDITION

## AN ADDITION TO WICHITA, SEDGWICK COUNTY, KANSAS

FINAL PLAT

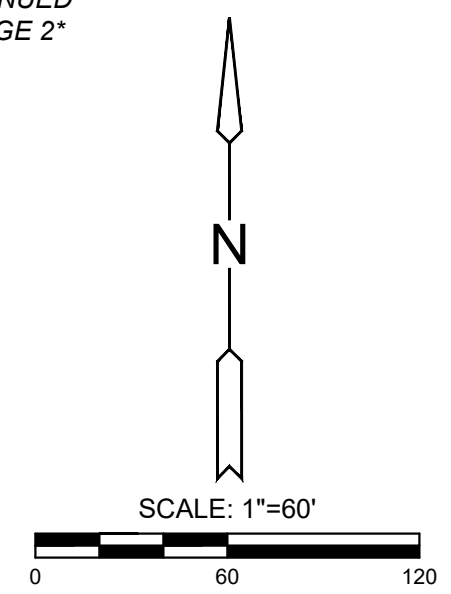


LOTS inclusive	BLOCK	ELEVATION NAVD 88
28-63	2	1329.4
1-3	10	1329.4
1-4	11	1329.4
1-5	12	1329.4
1-4	13	1329.4
1-4	14	1329.4
1-8	15	1329.4
1-8	16	1329.4
1-8	17	1329.4
1-4	18	1329.4
1-5	19	1329.4
1-8	20	1329.4

**BENCHMARK**  
BM#1 Chiseled "X" top of north curb on north access drive to Meritrust Credit Union from Meridian Ave. 45' northwest of sanitary manhole, 40 feet east of back of curb corner, 29 feet north of south access drive back of curb.  
Elev.=1329.89 NAVD88

Line #	Length	Direction
L6	46.94'	N73°05'49"W
L7	571.61'	N01°09'04"W
L8	144.83'	S88°50'56"W
L9	455.22'	N01°09'04"W
L10	692.80'	N88°50'56"E
L11	448.67'	S01°09'04"E
L12	281.69'	N88°50'56"E
L13	517.87'	N01°09'04"W
L14	147.41'	N88°50'56"E
L15	8.78'	S15°05'11"W
L16	95.75'	S01°09'04"E
L17	184.50'	S26°43'04"E
L18	114.82'	S26°43'04"E
L19	55.69'	S09°07'43"W
L20	55.63'	N76°49'12"W
L21	170.90'	S13°10'48"W
L22	148.34'	N81°12'32"W
L23	290.21'	N01°09'04"W
L24	53.32'	S22°08'46"E

Curve #	Length	Radius	Delta	Chord Direction	Chord Length
C3	132.62'	536.00'	14°10'33"	S88°17'27"W	132.28'
C5	200.16'	700.00'	16°22'59"	S87°11'14"W	199.48'
C6	194.83'	400.00'	27°54'26"	N87°03'02"W	192.91'
C9	444.19'	800.00'	31°48'45"	S82°53'06"W	438.50'
C10	301.66'	1000.00'	17°17'02"	N85°27'43"W	300.52'
C11	272.96'	1000.00'	15°38'23"	S78°04'34"W	272.12'
C12	15.07'	400.00'	2°09'30"	S71°20'07"W	15.07'
C13	73.29'	200.00'	20°59'41"	S11°38'55"E	72.88'
C14	114.73'	400.00'	16°26'03"	S80°37'54"W	114.34'
C15	53.41'	34.00'	90°00'00"	N43°50'56"E	48.08'
C16	42.51'	150.00'	16°14'15"	S06°58'03"W	42.37'
C17	112.46'	100.00'	64°26'01"	S58°56'04"E	106.62'
C18	38.24'	34.00'	64°26'01"	S58°56'04"E	36.25'
C19	93.85'	150.00'	35°50'47"	S08°47'40"E	92.32'
C20	139.27'	200.00'	39°53'52"	S06°46'08"E	136.47'
C21	312.50'	400.00'	44°45'42"	S09°12'03"E	304.61'



Basis of Bearings: Kansas coordinate system of 1983 south zone bearing of N01°08'35"W on the east line of Northeast Quarter, Section 25, Township 26 South, Range 1 West of the Sixth Principal Meridian, Sedgwick County, Kansas. This plat is surveyed and platted on NAD83 using Kansas state plane south zone coordinates, modified to the surface, having a combined adjustment scale factor of 1.000120014401728

- LEGEND**  
Date of Survey: 12/20/2021
- △ = Section Corner Monument Found
  - = Found 5/8" rebar w/ MKEC CLS 39 id. cap or see annotation for type
  - = Set 5/8" rebar w/ MKEC CLS 39 id. cap
  - ⊕ = Benchmark
  - (M) = Measured
  - (P) = Platted
  - (D) = Described
  - (CM) = Calculated from Measurement
  - (CP) = Calculated from Plat
  - (CD) = Calculated from Described
  - Drng. = Drainage
  - Util. = Utility
  - Sdwlk. = Sidewalk
  - St. = Street
  - Esmt. = Easement
  - 1 = Lot
  - ① = Block

