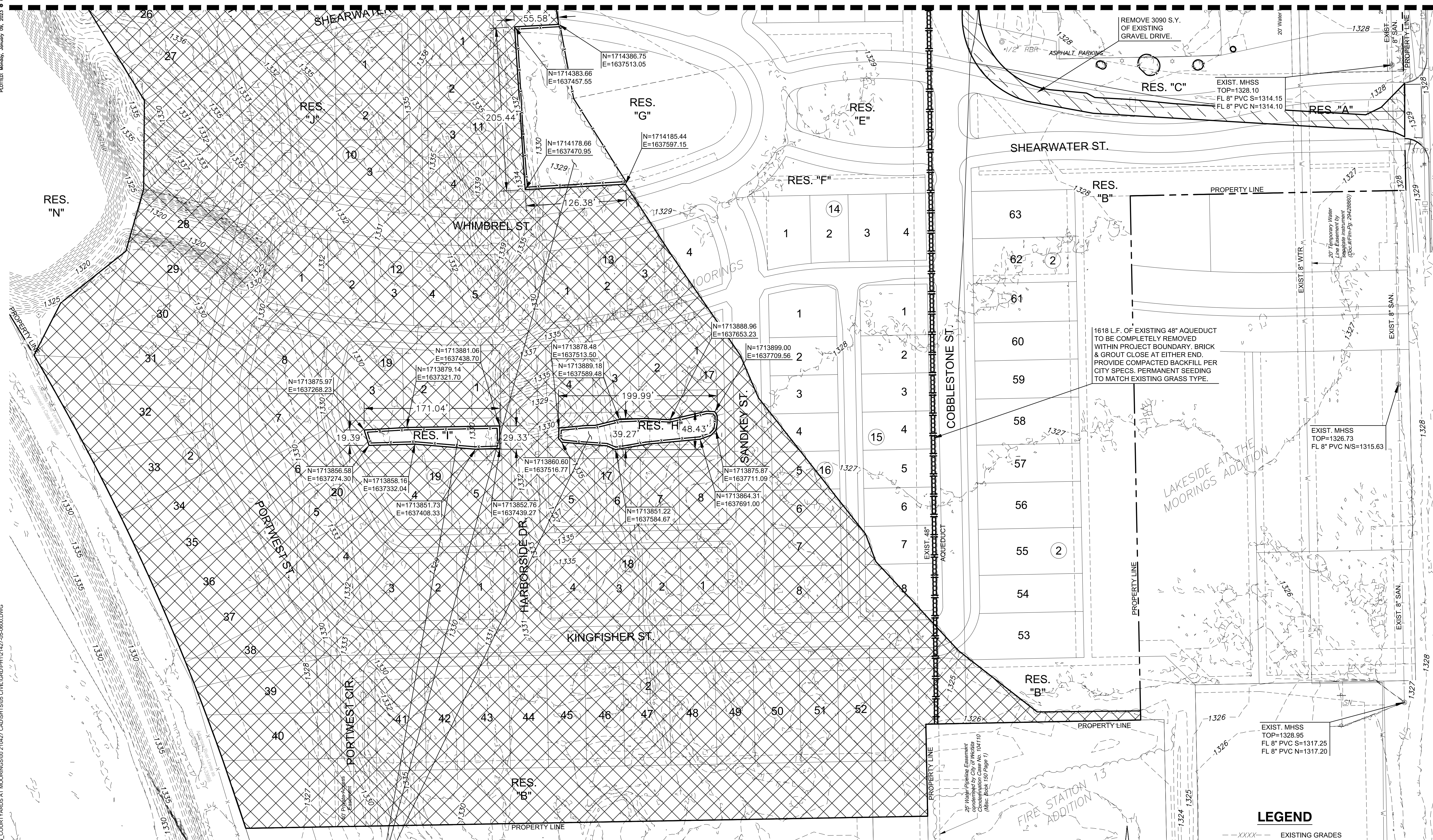


J:\PROJECTS\2022\12\10\10427_PERFECTION_COURTYARDS_AT_MOORINGS\DWG\210427_CAD\SHS\105_CIVIL\GRD\PH12\1427-05-0600.DWG
 PLOTTED: Monday, January 09, 2023 @ 08:11 AM

MATCHLINE-SEE SHEET 03



EXISTING TREES IN RESERVES TO REMAIN. ONCE AREA AROUND RESERVE HAS BEEN GRADED, THE QUALITY OF THE TREES WILL BE ASSESSED BY OWNER'S REPRESENTATIVE. OWNER'S REPRESENTATIVE WILL THEN GIVE RECOMMENDATION TO CONTRACTOR FOR FURTHER REMOVAL / CLEAN UP IF WARRANTED.

- NOTE:**
- CONTRACTOR SHALL ESTABLISH / INSTALL TREE PROTECTION PRIOR TO TREE DEMOLITION.
 - ALL ITEMS SHOWN ON THIS SHEET SHALL BE SUBSIDIARY TO 'SITE CLEARING'.

LEGEND

- XXXX ----- EXISTING GRADES
- XXXXXXXXXXXXX UTILITY REMOVAL / ABANDONMENT
- [Cross-hatched box] TREE, HEDGE, STUMP, AND ROOT REMOVAL
- [Diagonal lines box] GRAVEL PAVEMENT REMOVAL
- [X symbol] TREE REMOVAL
- [Dashed line box] TREE PROTECTION / AREA OF NO DISTURBANCE



MASS GRADING PLANS FOR
COURTYARDS AT THE MOORINGS
 WICHITA, KS

©2023 MKEC Engineering All Rights Reserved www.mkec.com
 These drawings and their contents, including, but not limited to, all concepts, designs, & ideas are the exclusive property of MKEC Engineering (MKEC), and may not be used or reproduced in any way without the express consent of MKEC.

SITE CLEARING PLAN SOUTH

| | | |
|-------------|-----------------|------|
| PROJECT NO. | 458-2022-085511 | |
| DATE | JAN. 2023 | |
| SCALE | 1" = 60' | |
| DESIGNED | DML | |
| DRAWN | CJL | |
| CHECKED | SPE | |
| NO. | REVISION | DATE |