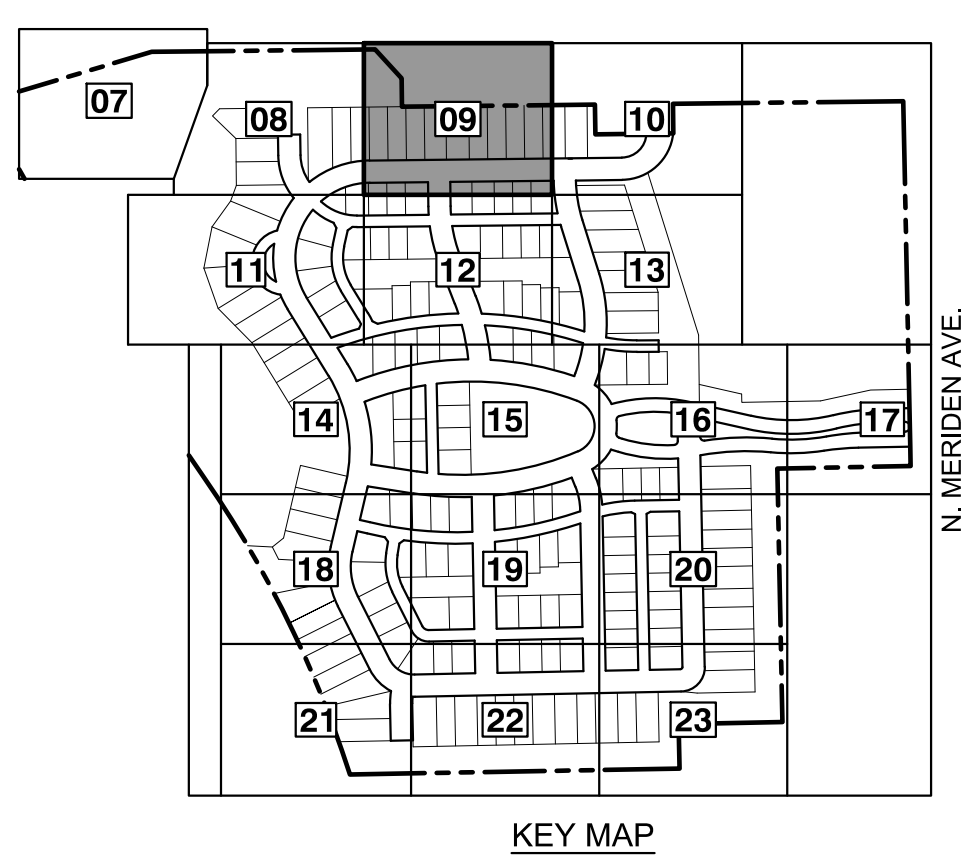
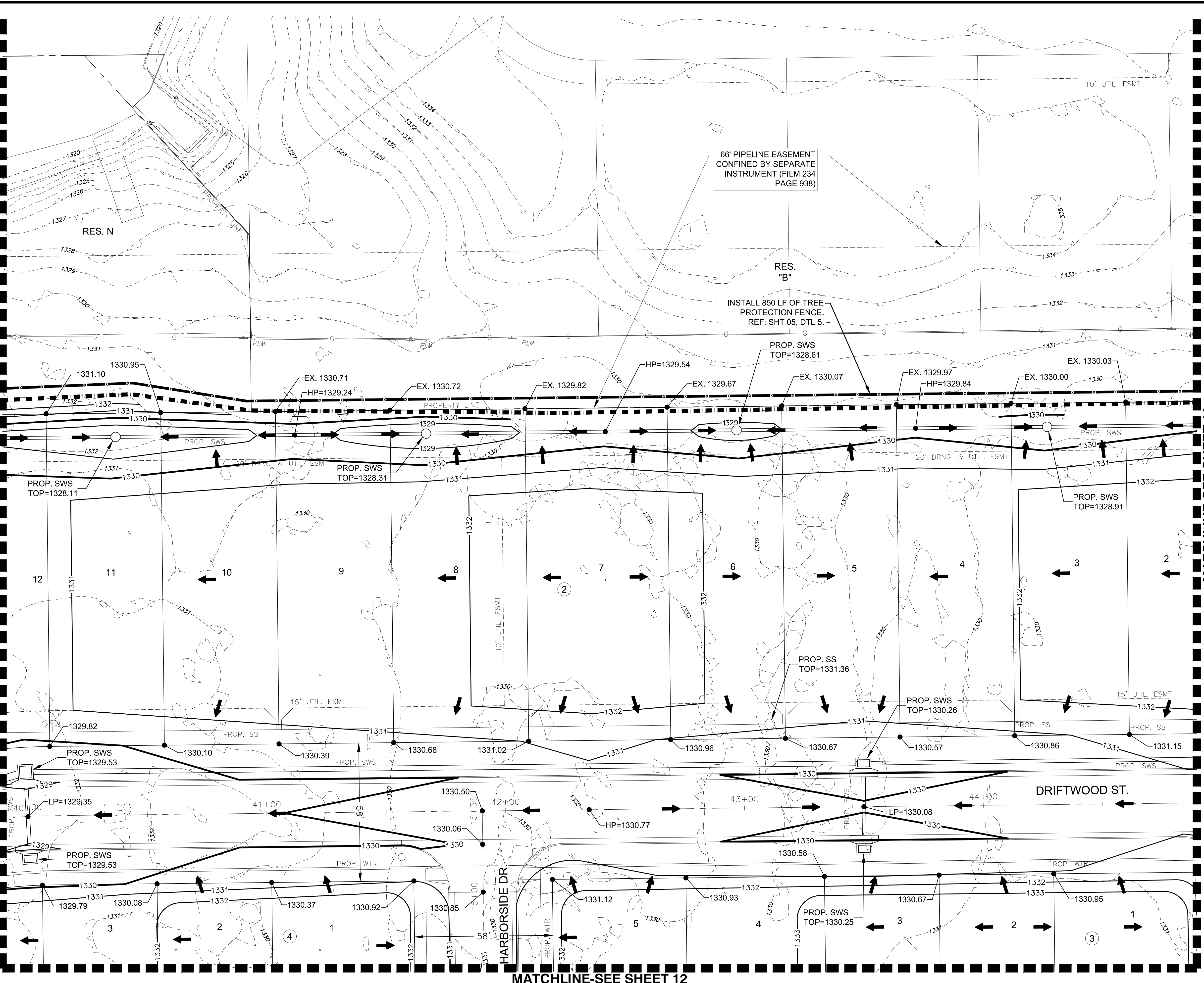
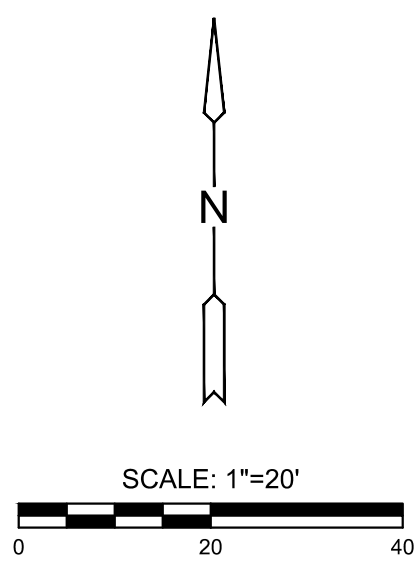


J:\PROJECTS\2022\12\10\10427-PERFECTION_COURTYARDS_AT_MOORINGS\DWG\10427-CAD\SH\TS\05-CIVIL\GRD\PH\12\427-05-1204.DWG
 PLOTTED: Monday, January 09, 2023 @ 08:20AM



NOTES:
VERTICAL DATUM USED IS NAVD88.

- LEGEND**
- 1250--- EXISTING CONTOUR
 - 1250— PROPOSED CONTOUR
 - W— PROP. WATERLINE
 - PROP. STORMWATER SEWER
 - |— PROP. SANITARY SEWER
 - W— EXIST. STORMWATER SEWER
 - |— EXIST. STORMWATER SEWER
 - |— EXIST. SANITARY SEWER
 - G— EXIST. UNDERGROUND GASLINE
 - UGT— EXIST. UNDERGROUND TELEPHONE
 - UGE— EXIST. UNDERGROUND ELECTRICAL
 - OHE— EXIST. OVERHEAD ELECTRICAL
 - — — — — LIMITS OF GRADING
 - 1329.86 SPOT ELEVATIONS
 - — — — — TREE PROTECTION



MASS GRADING PLANS FOR
COURTYARDS AT THE MOORINGS
 WICHITA, KS

©2023
 MKEC Engineering
 All Rights Reserved
 www.mkec.com
 These drawings and their contents, including, but not limited to, all concepts, designs, & ideas are the exclusive property of MKEC Engineering (MKEC), and may not be used or reproduced in any way without the express consent of MKEC.

GRADING PLAN

PROJECT NO.	458-2022-085511	
DATE	JAN. 2023	
SCALE	1"=20'	
DESIGNED	DML	
DRAWN	C-JL	
CHECKED	SPE	
NO.	REVISION	DATE
SHEET NO.		
09 OF 43		