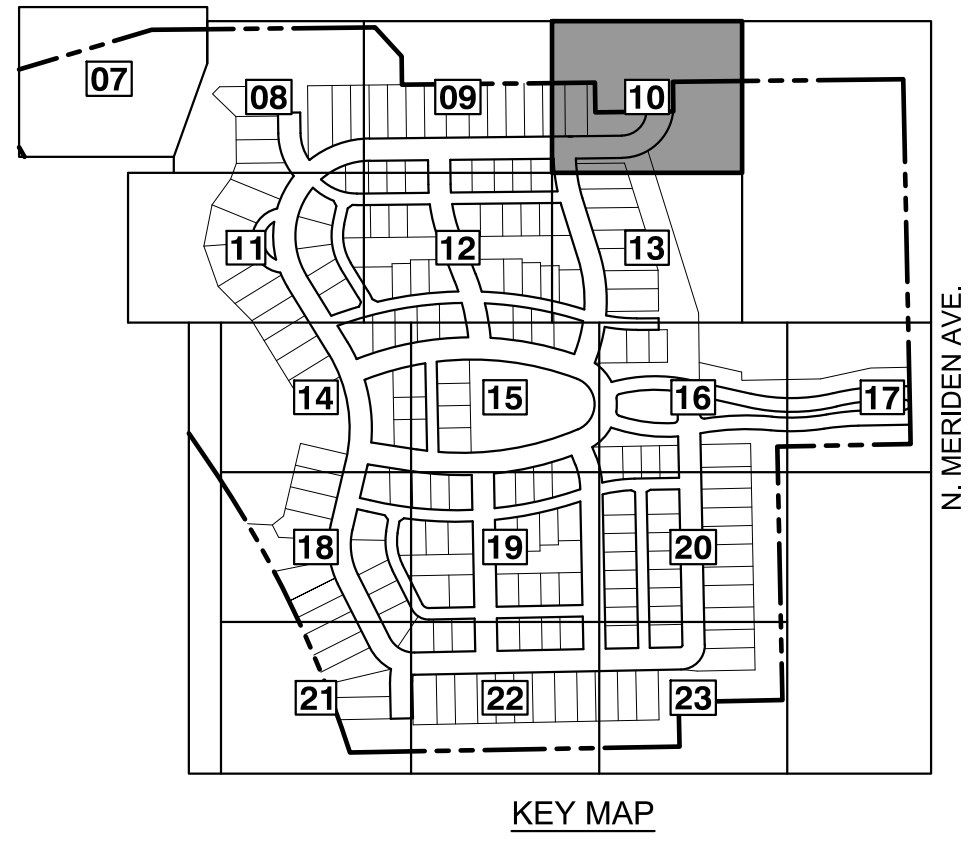
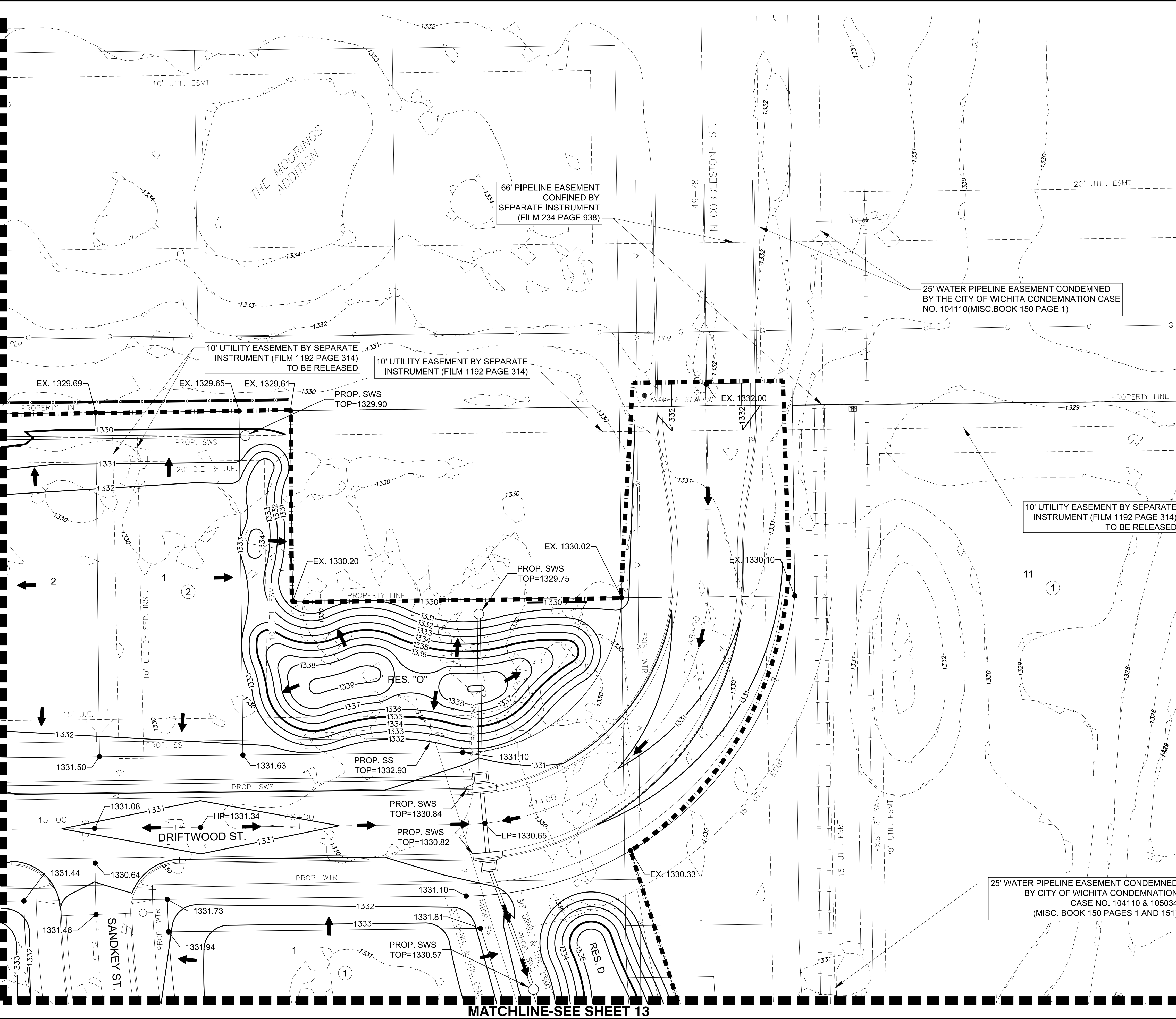
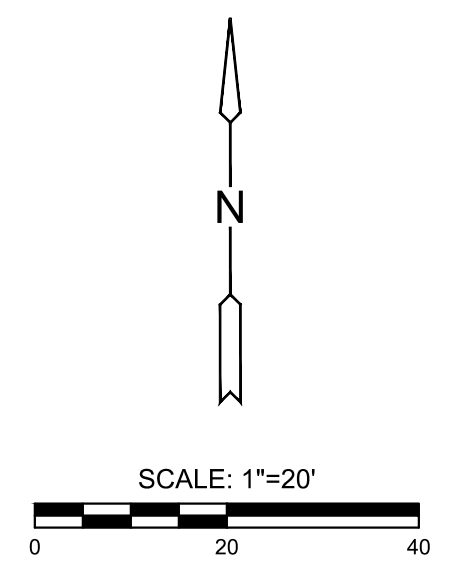


J:\PROJECTS\2022\12\10\10427-PERFECTION_COURTYARDS AT MOORINGS\DWG\1210427-CAD\SHS\05-DWG\GRD\PH1210427-05-1205.DWG
 PLOTTED: Monday, January 09, 2023 @ 08:22AM
 MATCHLINE-SEE SHEET 09
 MATCHLINE-SEE SHEET 13



NOTES:
VERTICAL DATUM USED IS NAVD88.

- LEGEND**
- 1250 --- EXISTING CONTOUR
 - 1250 — PROPOSED CONTOUR
 - W — PROP. WATERLINE
 - S — PROP. STORMWATER SEWER
 - S — PROP. SANITARY SEWER
 - W — EXIST. STORMWATER SEWER
 - S — EXIST. SANITARY SEWER
 - G — EXIST. UNDERGROUND GASLINE
 - UGT — EXIST. UNDERGROUND TELEPHONE
 - UGE — EXIST. UNDERGROUND ELECTRICAL
 - OHE — EXIST. OVERHEAD ELECTRICAL
 - — — — — LIMITS OF GRADING
 - 1329.86 SPOT ELEVATIONS
 - — — — — TREE PROTECTION



MASS GRADING PLANS FOR
COURTYARDS AT THE MOORINGS
 WICHITA, KS

©2023
 MKEC Engineering
 All Rights Reserved
 www.mkec.com
 These drawings and their contents, including, but not limited to, all concepts, designs, & ideas are the exclusive property of MKEC Engineering (MKEC), and may not be used or reproduced in any way without the express consent of MKEC.

GRADING PLAN

PROJECT NO.	458-2022-085511	
DATE	JAN. 2023	
SCALE	1"=20'	
DESIGNED	DRAWN	CHECKED
DML	C-JL	SPE
NO.	REVISION	DATE
SHEET NO.		
10 OF 43		