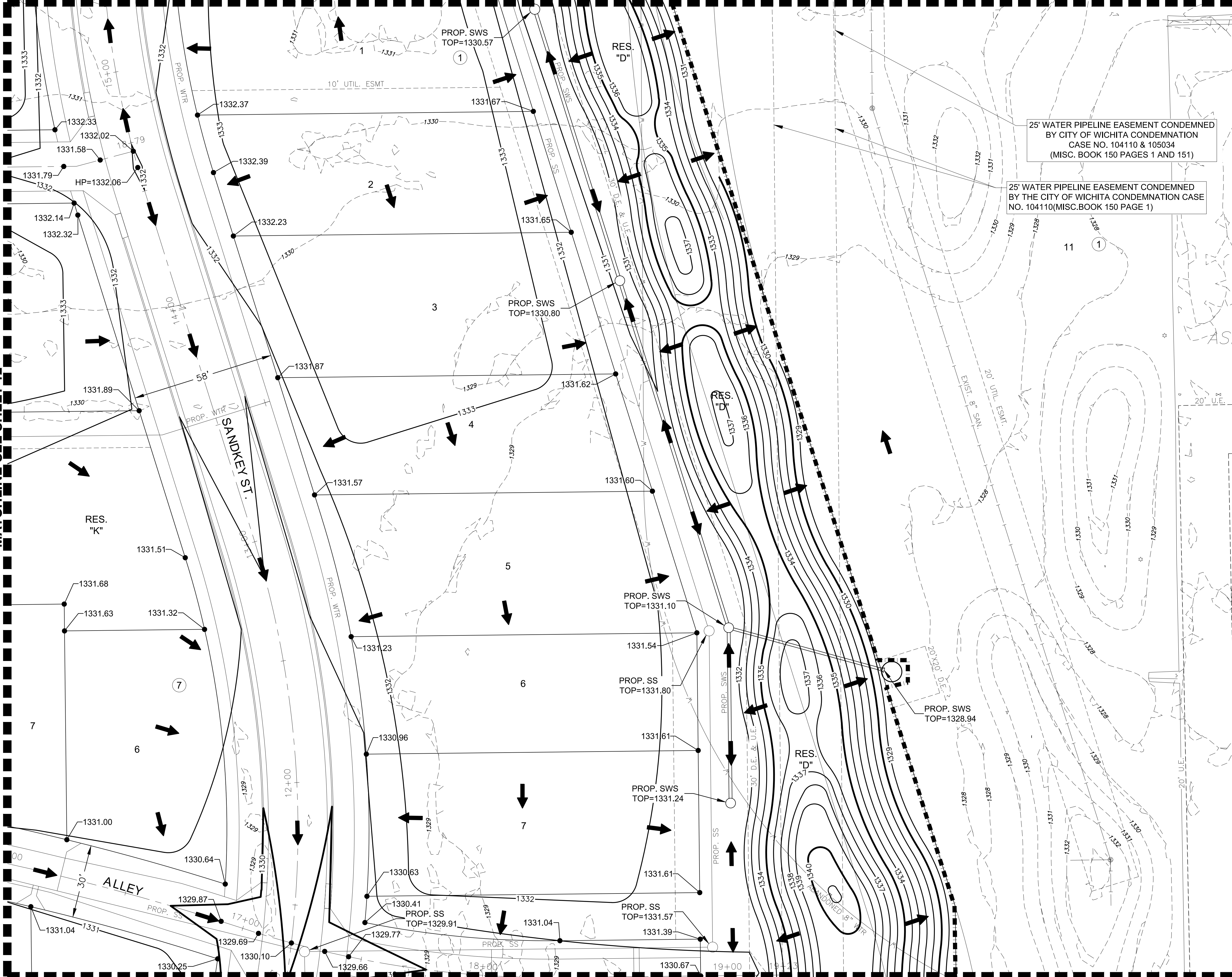


J:\PROJECTS\2022\12\10\10427_PERFECTION_COURTYARDS_AT_MOORINGS\DWG\210427_CAD\SHS\05_CIVIL\GRD\PH12\1227-05-1208.DWG
 PLOTTED: Monday, January 09, 2023 @ 08:27AM

MATCHLINE-SEE SHEET 12

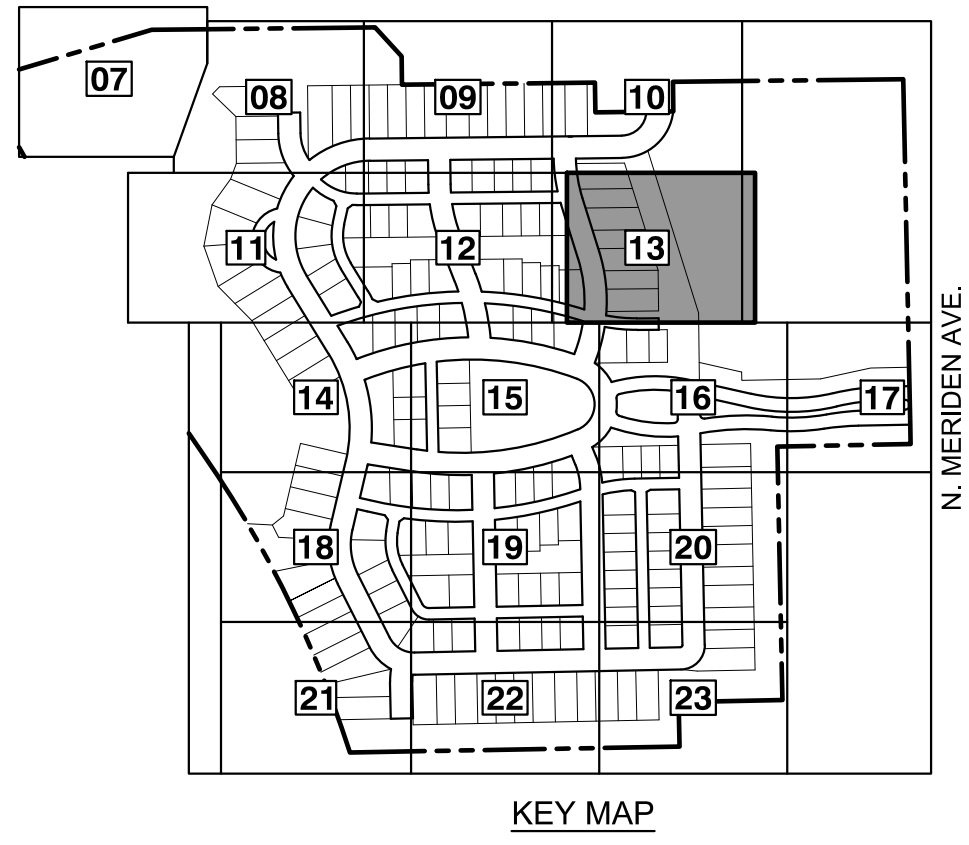
MATCHLINE-SEE SHEET 10

MATCHLINE-SEE SHEET 16



25' WATER PIPELINE EASEMENT CONDEMNED BY CITY OF WICHITA CONDEMNATION CASE NO. 104110 & 105034 (MISC. BOOK 150 PAGES 1 AND 151)

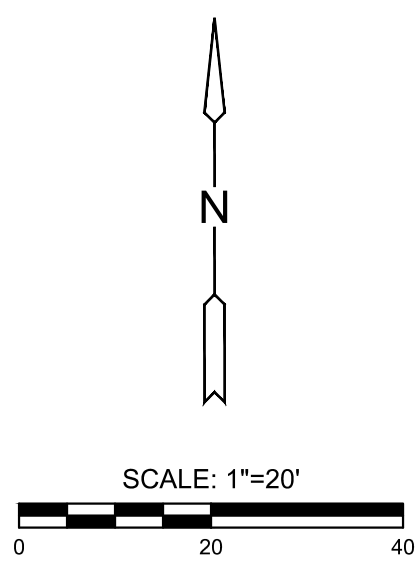
25' WATER PIPELINE EASEMENT CONDEMNED BY THE CITY OF WICHITA CONDEMNATION CASE NO. 104110(MISC.BOOK 150 PAGE 1)



NOTES:
VERTICAL DATUM USED IS NAVD88.

LEGEND

	EXISTING CONTOUR
	PROPOSED CONTOUR
	PROP. WATERLINE
	PROP. STORMWATER SEWER
	PROP. SANITARY SEWER
	EXIST. STORMWATER SEWER
	EXIST. STORMWATER SEWER
	EXIST. SANITARY SEWER
	EXIST. UNDERGROUND TELEPHONE
	EXIST. UNDERGROUND ELECTRICAL
	EXIST. OVERHEAD ELECTRICAL
	LIMITS OF GRADING
	SPOT ELEVATIONS



MASS GRADING PLANS FOR
COURTYARDS AT THE MOORINGS
 WICHITA, KS

©2023
MKEC Engineering
All Rights Reserved
www.mkec.com
These drawings and their contents, including, but not limited to, all concepts, designs, & ideas are the exclusive property of MKEC Engineering (MKEC), and may not be used or reproduced in any way without the express consent of MKEC.

GRADING PLAN

PROJECT NO.	458-2022-085511	
DATE	JAN. 2023	
SCALE	1"=20'	
DESIGNED	DRAWN	CHECKED
DML	C-JL	SPE
NO.	REVISION	DATE

SHEET NO.
13 OF 43