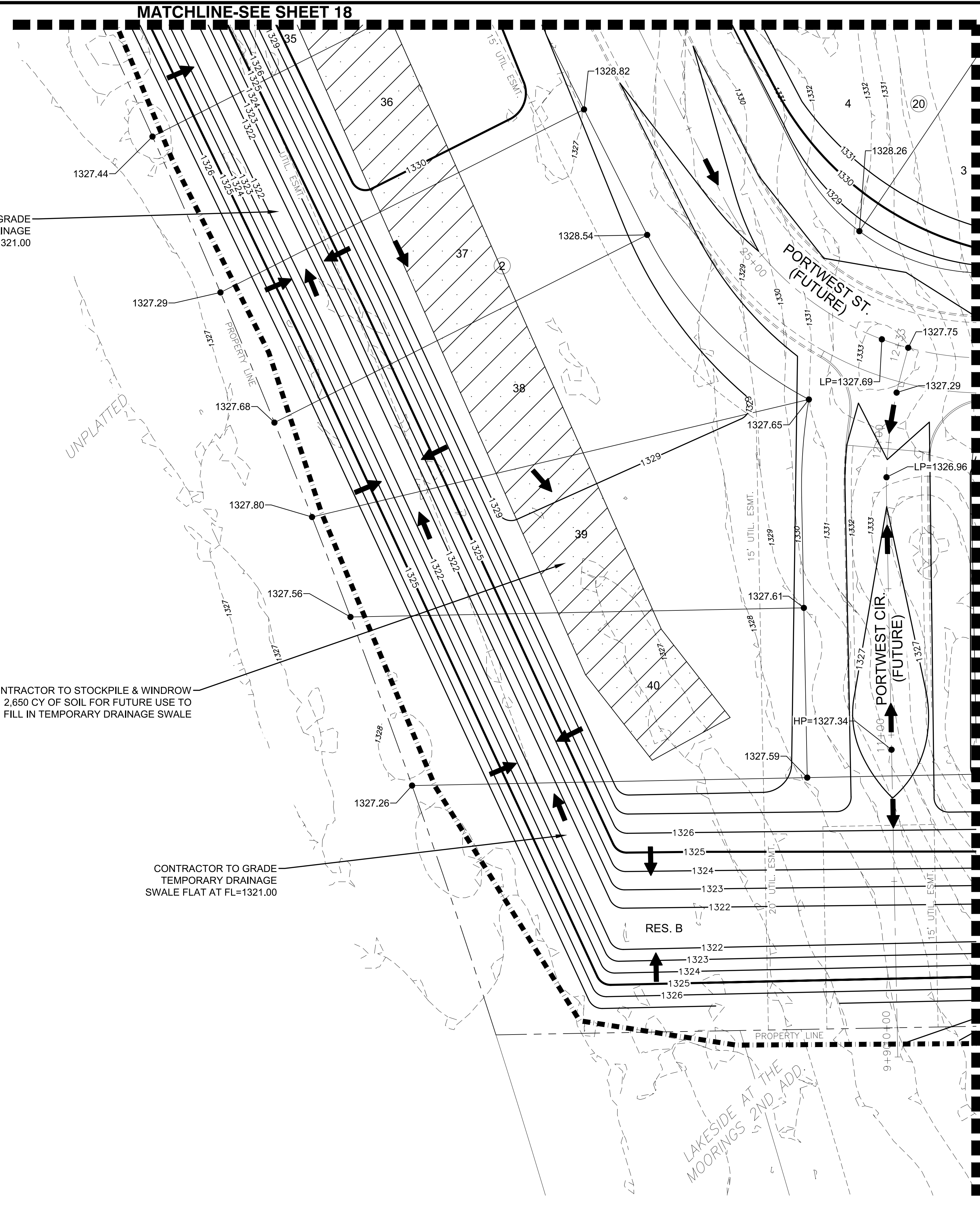


J:\PROJECTS\2022\12\10\10427_PERFECTION_COURTYARDS AT MOORINGS\DWG 210427 CAD\SH1\05 CIVIL\GRD\PH1\210427-05-1216.DWG
 PLOTTED: Monday, January 09, 2023 @ 08:40AM

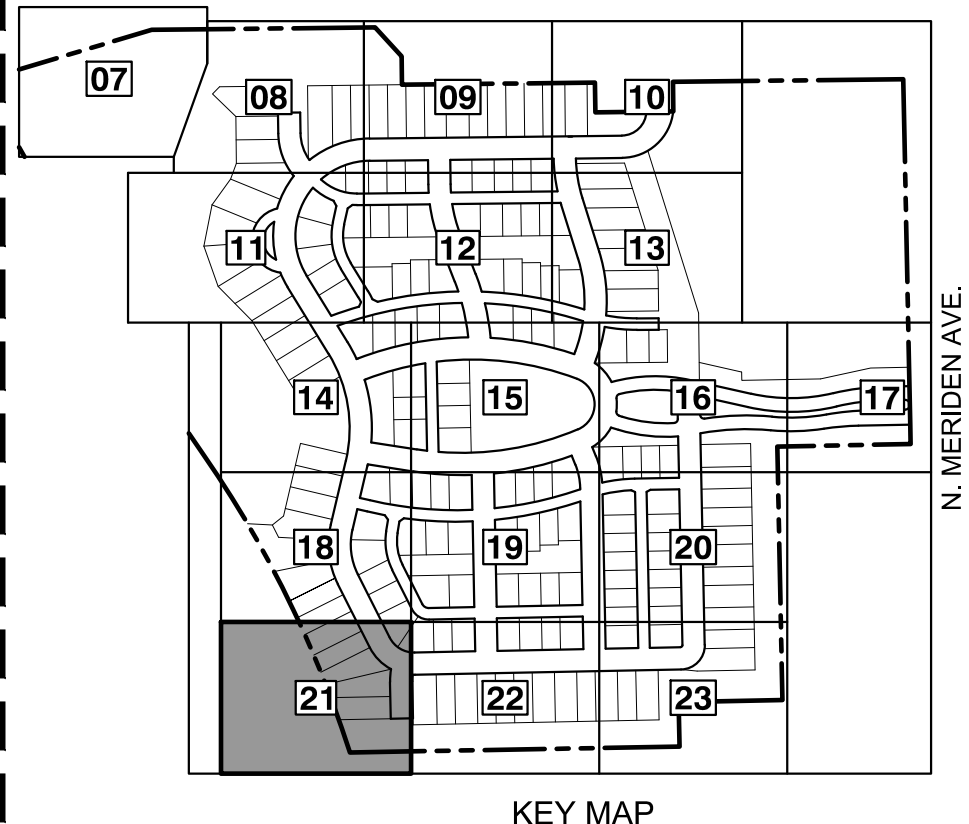


CONTRACTOR TO GRADE
 TEMPORARY DRAINAGE
 SWALE FLAT AT FL=1321.00

CONTRACTOR TO STOCKPILE & WINDROW
 2,650 CY OF SOIL FOR FUTURE USE TO
 FILL IN TEMPORARY DRAINAGE SWALE

CONTRACTOR TO GRADE
 TEMPORARY DRAINAGE
 SWALE FLAT AT FL=1321.00

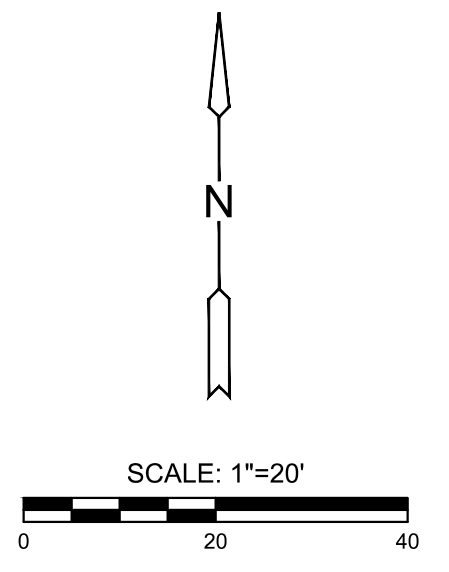
MATCHLINE-SEE SHEET 22



NOTES:
 VERTICAL DATUM USED IS NAVD88.

LEGEND

- 1250 --- EXISTING CONTOUR
- 1250 — PROPOSED CONTOUR
- W — PROP. WATERLINE
- (O) — PROP. STORMWATER SEWER
- (S) — PROP. SANITARY SEWER
- W — EXIST. STORMWATER SEWER
- (O) — EXIST. STORMWATER SEWER
- (S) — EXIST. SANITARY SEWER
- UGT — EXIST. UNDERGROUND TELEPHONE
- UGE — EXIST. UNDERGROUND ELECTRICAL
- OHE — EXIST. OVERHEAD ELECTRICAL
- — — — — LIMITS OF GRADING
- 1329.86 SPOT ELEVATIONS
- ▬▬▬ TEMPORARY DRAINAGE SWALE



MASS GRADING PLANS FOR
COURTYARDS AT THE MOORINGS
 WICHITA, KS

©2023
 MKEC Engineering
 All Rights Reserved
 www.mkec.com
 These drawings and their contents,
 including, but not limited to, all concepts,
 designs, & ideas are the exclusive
 property of MKEC Engineering (MKEC),
 and may not be used or reproduced in any
 way without the express consent of MKEC.

GRADING PLAN

PROJECT NO.	458-2022-085511
DATE	JAN. 2023
SCALE	1" = 20'
DESIGNED	DML
DRAWN	C-JL
CHECKED	SPE

NO.	REVISION	DATE