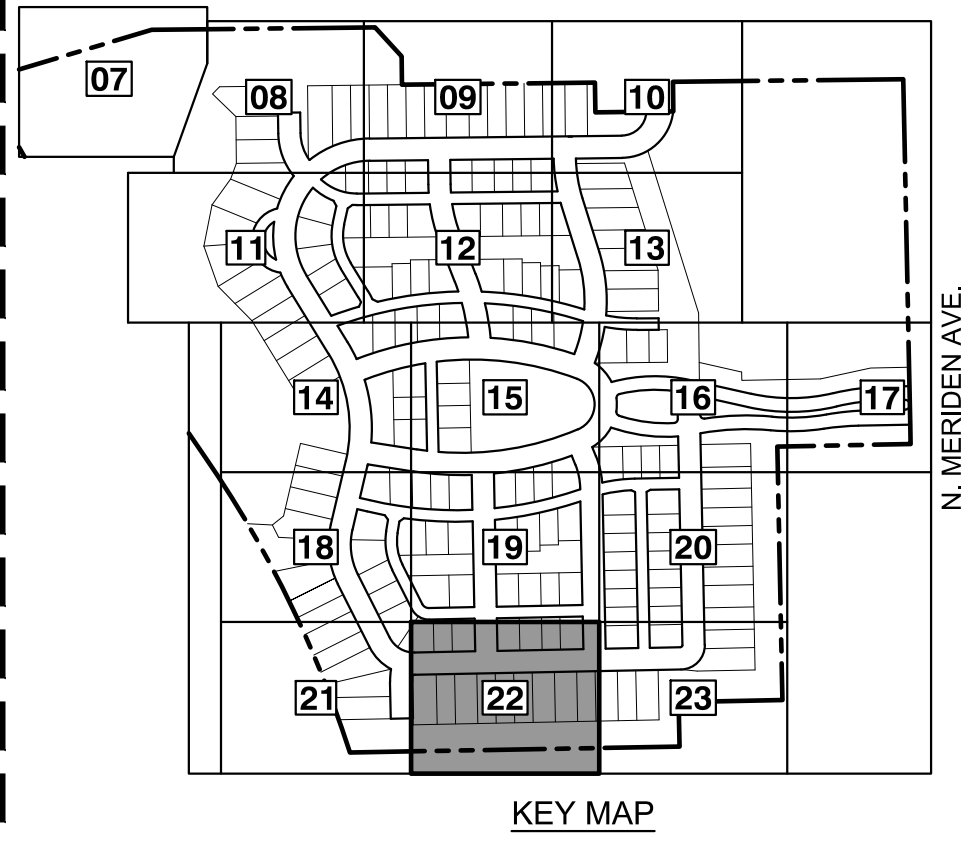
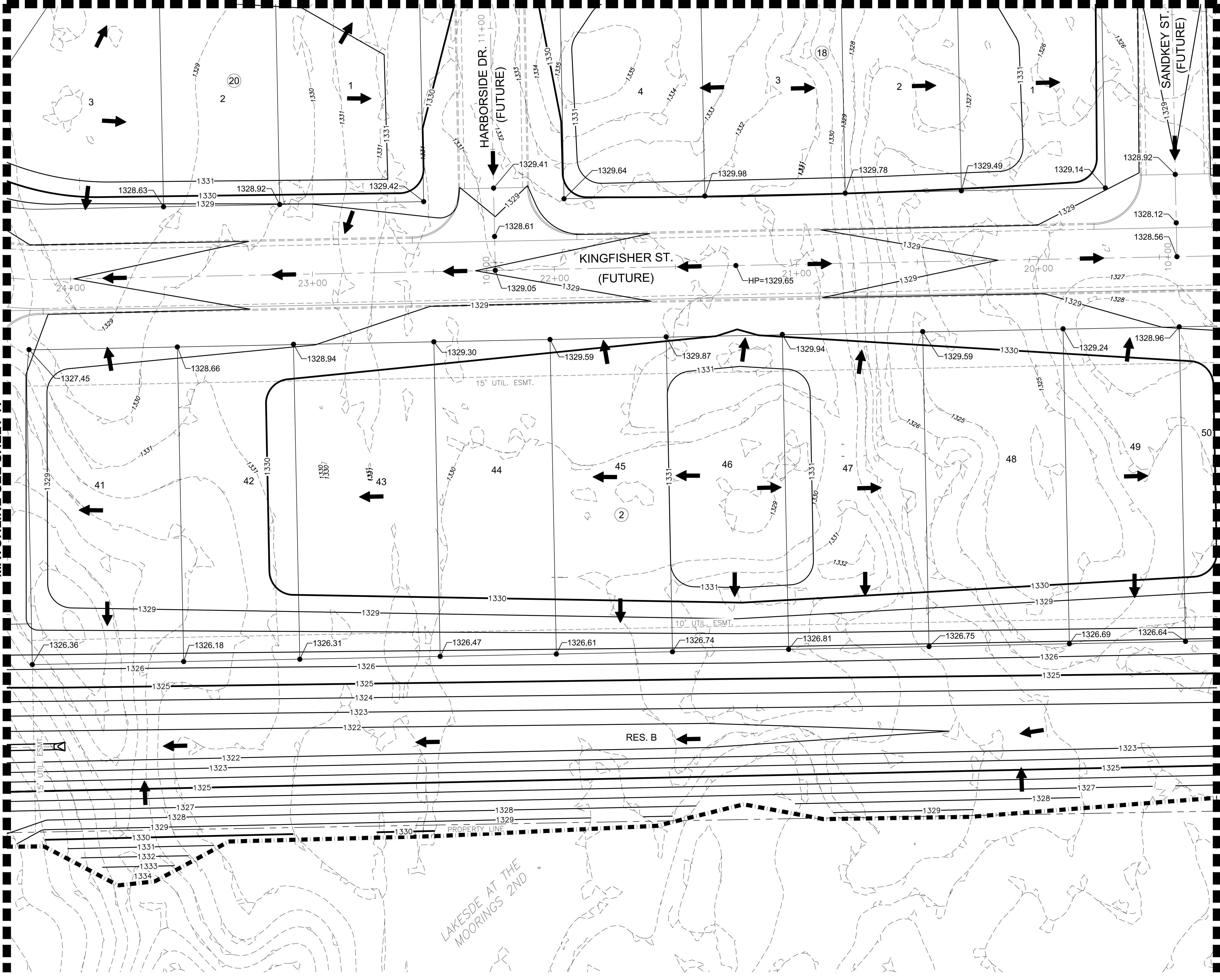


J:\PROJECTS\2022\12\10\10427\_PERFECTION\_COURTYARDS\_AT\_MOORINGS\DWG\10427\_CAD\SHR\12\1427-054-1217.DWG  
 PLOTTED: Monday, January 09, 2023 @ 08:24AM

MATCHLINE-SEE SHEET 15



NOTES:  
VERTICAL DATUM USED IS NAVD88.

**LEGEND**

- 1250- EXISTING CONTOUR
- 1250- PROPOSED CONTOUR
- PROP. WATERLINE
- PROP. STORMWATER SEWER
- PROP. SANITARY SEWER
- EXIST. STORMWATER SEWER
- EXIST. STORMWATER SEWER
- EXIST. SANITARY SEWER
- EXIST. UNDERGROUND TELEPHONE
- EXIST. UNDERGROUND ELECTRICAL
- EXIST. OVERHEAD ELECTRICAL
- LIMITS OF GRADING
- 1329.86 SPOT ELEVATIONS
- TEMPORARY DRAINAGE SWALE



MASS GRADING PLANS FOR  
**COURTYARDS AT THE MOORINGS**  
 WICHITA, KS

©2023  
 MKEC Engineering  
 All Rights Reserved  
 www.mkec.com  
 These drawings and their contents, including, but not limited to, all concepts, designs, & ideas are the exclusive property of MKEC Engineering (MKEC), and may not be used or reproduced in any way without the express consent of MKEC.

**GRADING PLAN**

PROJECT NO.	458-2022-085511
DATE	JAN. 2023
SCALE	1" = 20'
DESIGNED	DML
DRAWN	C-JL
CHECKED	SPE

NO.	REVISION	DATE

SHEET NO.  
22 OF 43