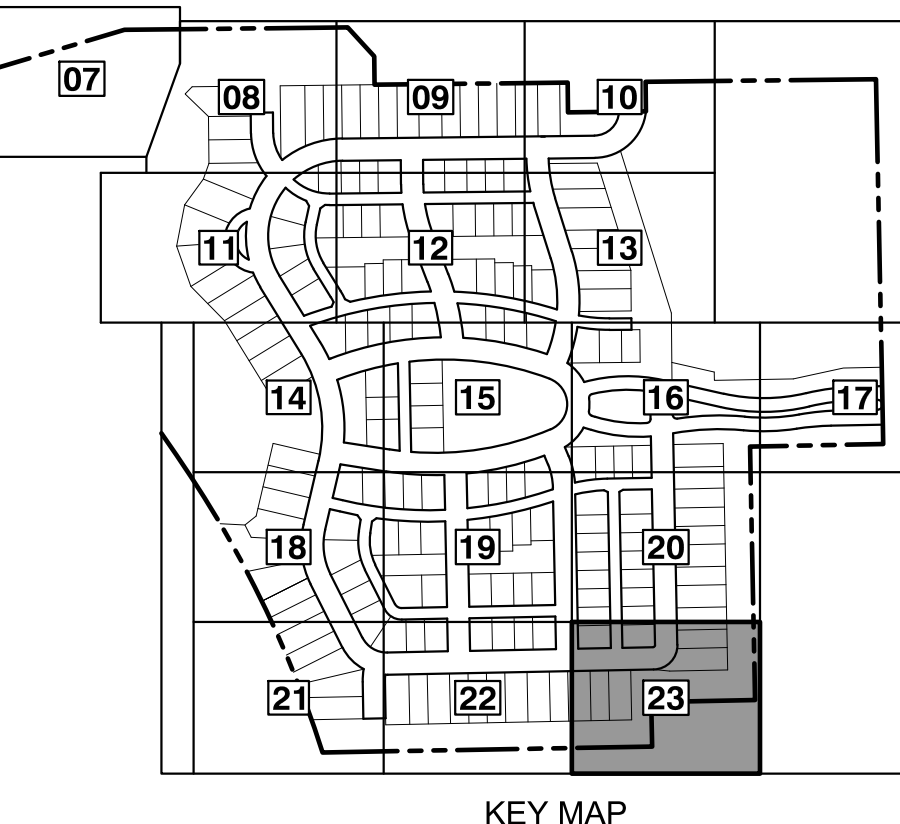
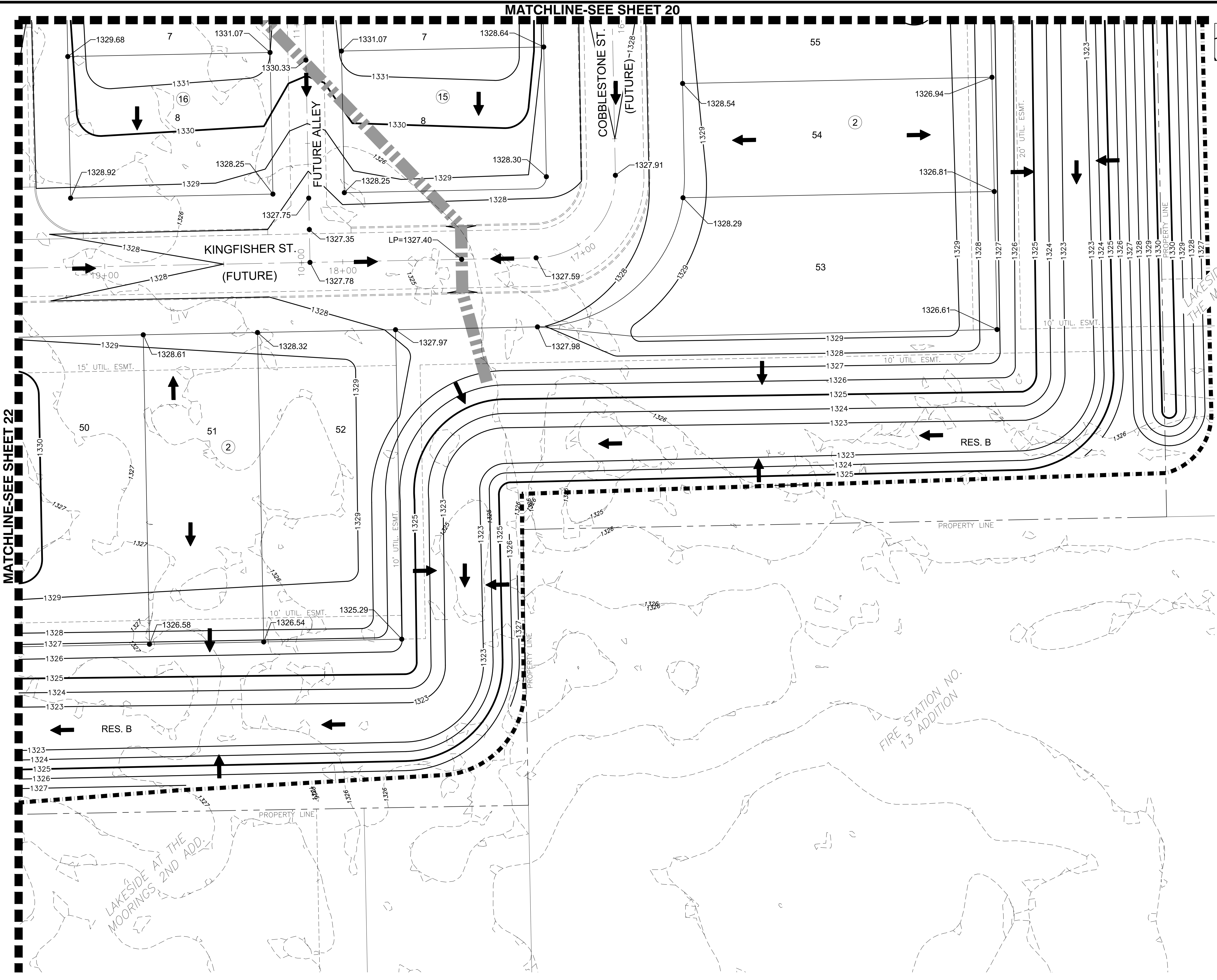


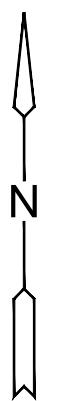
J:\PROJECTS\2022\12\10\10427_PERFECTION_COURTYARDS_AT_MOORINGS\DWG\12427-054-1218.DWG
 PLOTTED: Monday, January 09, 2023 @ 08:43AM



NOTES:
VERTICAL DATUM USED IS NAVD88.

LEGEND

- 1250- EXISTING CONTOUR
- 1250- PROPOSED CONTOUR
- PROP. WATERLINE
- PROP. STORMWATER SEWER
- PROP. SANITARY SEWER
- EXIST. STORMWATER SEWER
- EXIST. STORMWATER SEWER
- EXIST. SANITARY SEWER
- EXIST. UNDERGROUND TELEPHONE
- EXIST. UNDERGROUND ELECTRICAL
- EXIST. OVERHEAD ELECTRICAL
- LIMITS OF GRADING
- 1329.86 SPOT ELEVATIONS
- TEMPORARY DRAINAGE SWALE



MASS GRADING PLANS FOR
COURTYARDS AT THE MOORINGS
 WICHITA, KS

©2023
 MKEC Engineering
 All Rights Reserved
 www.mkec.com
 These drawings and their contents, including, but not limited to, all concepts, designs, & ideas are the exclusive property of MKEC Engineering (MKEC), and may not be used or reproduced in any way without the express consent of MKEC.

GRADING PLAN

PROJECT NO.	458-2022-085511	
DATE	JAN. 2023	
SCALE	1" = 20'	
DESIGNED	DRAWN	CHECKED
DML	C-JL	SPE
NO.	REVISION	DATE