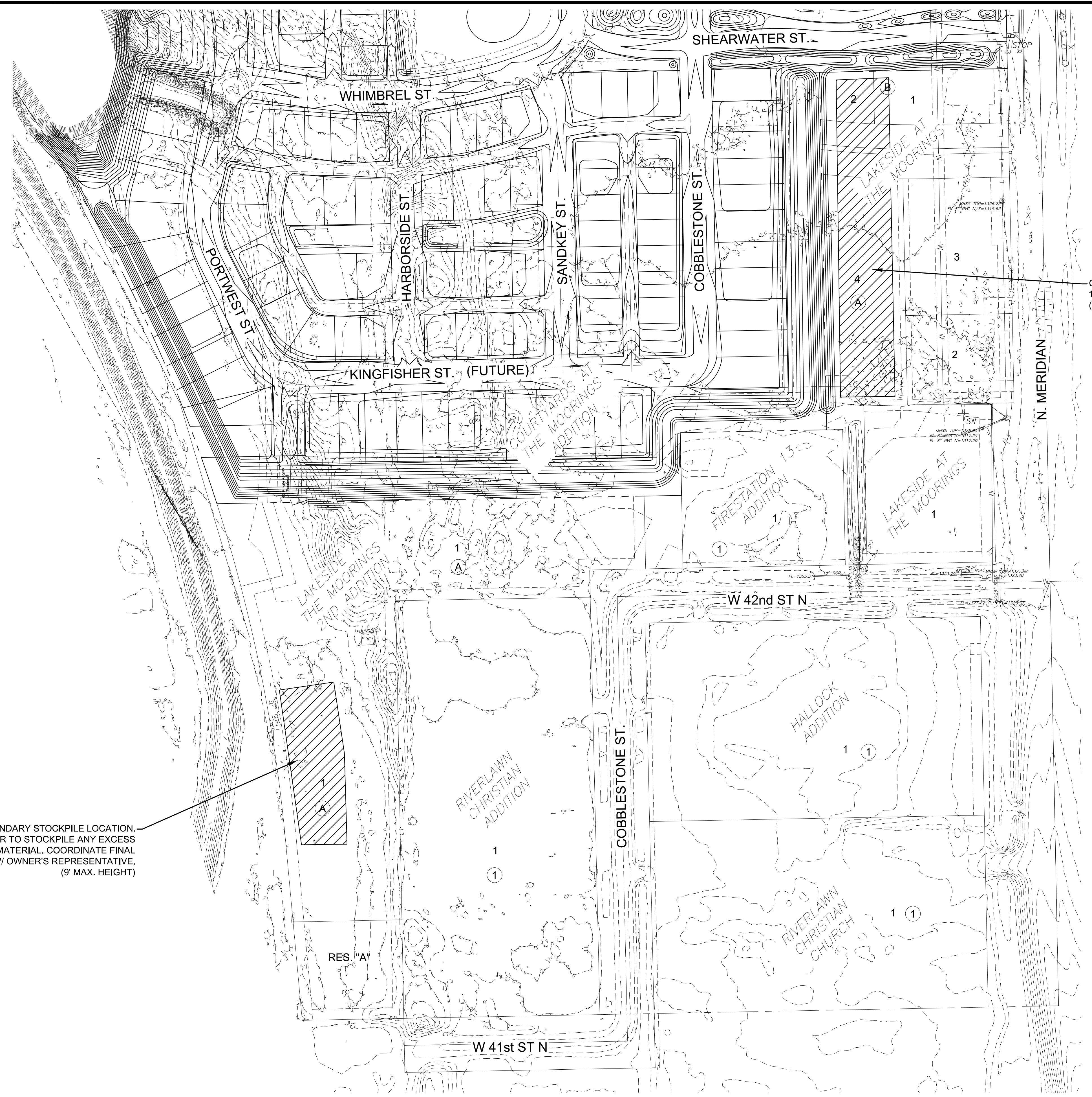


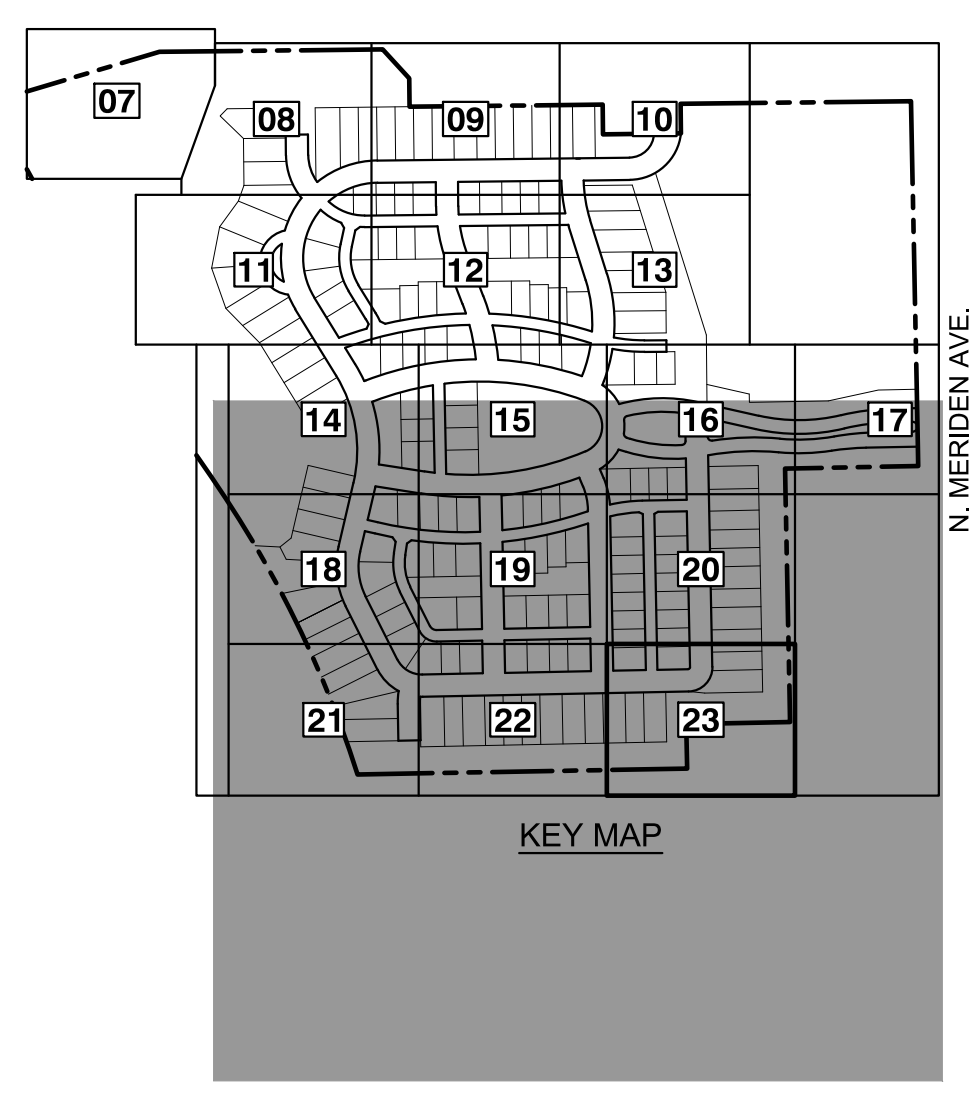
PLOTTED: Monday, January 09, 2023 @ 08:44AM

J:\PROJECTS\2021\1010427_PERFECTION_COURTYARDS AT MOORINGS\DWG\210427 CAD\SHOTS\05 CIVIL\GRD\PH1121427-05-1218.DWG



SECONDARY STOCKPILE LOCATION.
CONTRACTOR TO STOCKPILE ANY EXCESS
SOIL MATERIAL. COORDINATE FINAL
LOCATION W/ OWNER'S REPRESENTATIVE.
(9' MAX. HEIGHT)

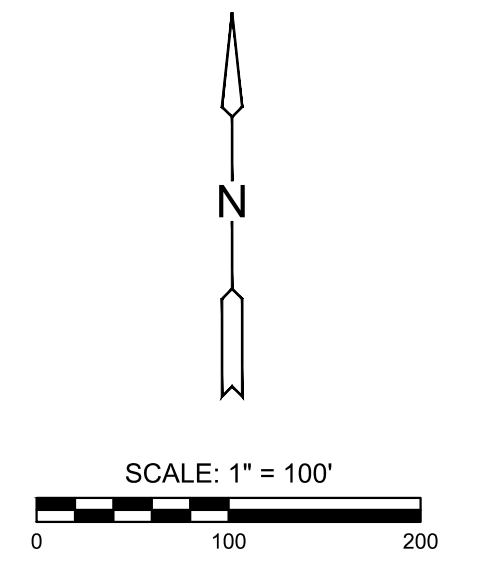
CONTRACTOR TO STOCKPILE
17,500 CY OF SOIL.
(9' MAX. HEIGHT)



NOTES:
VERTICAL DATUM USED IS NAVD88.

LEGEND

- 1250--- EXISTING CONTOUR
- 1250— PROPOSED CONTOUR
- W— PROP. WATERLINE
- PROP. STORMWATER SEWER
- |— PROP. SANITARY SEWER
- W— EXIST. STORMWATER SEWER
- |○|— EXIST. STORMWATER SEWER
- |— EXIST. SANITARY SEWER
- UGT— EXIST. UNDERGROUND TELEPHONE
- UGE— EXIST. UNDERGROUND ELECTRICAL
- OHE— EXIST. OVERHEAD ELECTRICAL



MASS GRADING PLANS FOR
COURTYARDS AT THE MOORINGS
WICHITA, KS

©2023
MKEC Engineering
All Rights Reserved
www.mkec.com
These drawings and their contents,
including, but not limited to, all concepts,
designs, & ideas are the exclusive
property of MKEC Engineering (MKEC),
and may not be used or reproduced in any
way without the express consent of MKEC.

OFF-SITE FILL LOCATIONS

PROJECT NO.	458-2022-085511
DATE	JAN. 2023
SCALE	1" = 100'
DESIGNED	DML
DRAWN	C-JL
CHECKED	SPE

NO.	REVISION	DATE

SHEET NO.
24 OF 43