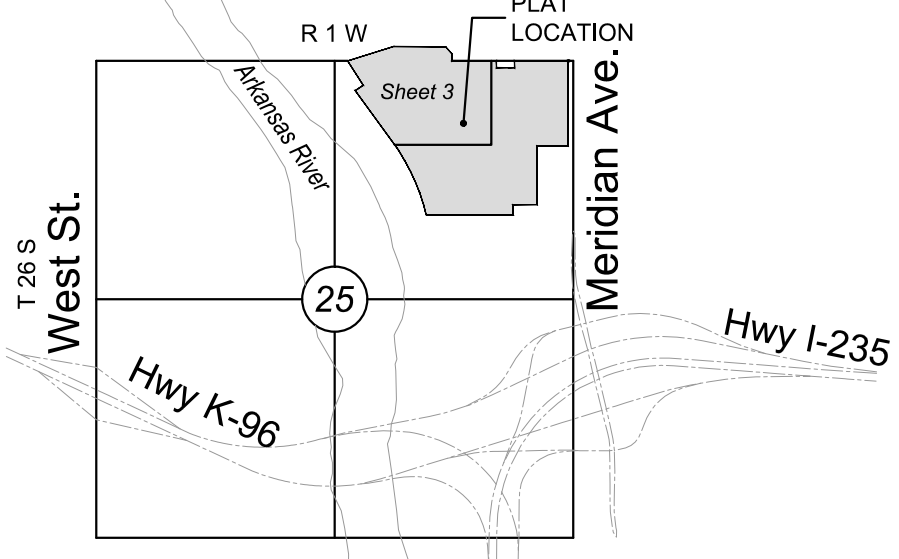


# FINAL PLAT

## COURTYARDS AT THE MOORINGS ADDITION

AN ADDITION TO WICHITA, SEDGWICK COUNTY, KANSAS



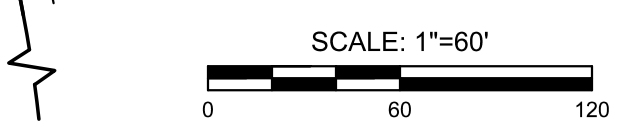
VICINITY MAP

Line #	Length	Direction
L25	36.10'	S20°43'08"W
L26	32.61'	N69°01'46"E
L27	203.34'	S31°34'54"E
L28	86.16'	S31°34'54"E
L29	111.80'	N21°02'21"W
L30	57.27'	N89°21'48"E
L31	146.50'	S17°24'32"E
L32	339.04'	S89°21'48"W
L33	216.94'	S89°21'48"W
L34	67.79'	S12°19'08"W
L35	27.00'	N45°45'31"W
L36	7.06'	N45°45'31"W
L37	53.88'	N00°38'12"W
L38	92.31'	N00°38'12"W
L39	656.77'	S89°21'48"W
L40	25.12'	S00°38'12"E

Curve #	Length	Radius	Delta	Chord Direction	Chord Length
C22	582.09'	800.00'	41°14'22"	N89°52'27"E	569.34'
C23	189.10'	600.00'	18°03'27"	N12°00'38"W	188.32'
C24	266.18'	400.00'	38°07'40"	S01°39'18"W	261.30'
C25	110.98'	400.00'	15°53'49"	S82°41'18"E	110.63'
C26	20.75'	400.00'	2°58'19"	S73°15'14"E	20.74'
C27	305.82'	1000.00'	17°31'20"	S80°31'45"E	304.63'
C28	394.16'	1000.00'	22°35'01"	N79°25'04"E	391.61'
C29	44.52'	200.00'	12°45'19"	S25°12'15"E	44.43'
C30	114.93'	150.00'	43°54'02"	S09°37'53"E	112.14'
C31	474.95'	225.00'	120°56'42"	S28°53'27"W	391.55'
C32	241.78'	70.00'	197°53'53"	S02°50'17"E	138.30'
C33	117.49'	150.00'	44°52'41"	N68°11'52"W	114.51'
C34	118.13'	150.00'	45°07'19"	N23°11'52"W	115.10'
C35	142.44'	400.00'	20°24'09"	N10°50'17"W	141.68'
C36	117.09'	400.00'	16°46'20"	S09°01'22"E	116.67'
C37	148.03'	100.00'	84°48'44"	S46°57'26"W	134.88'

LOTS inclusive	BLOCK	ELEVATION NAVD 88
1-10	1	1329.4
1-27	2	1329.4
1-5	3	1329.4
1-4	4	1329.4
1-5	5	1329.4
1-8	6	1329.4
1-10	7	1329.4
1-4	8	1329.4
1-5	9	1329.4
1	10	1329.4
1	11	1329.4

**LEGEND**  
 Date of Survey: 12/20/2021  
 Δ = Section Corner Monument Found  
 ○ = Found 3/8" rebar w/ MKEC CLS 39 id. cap or see annotation for type  
 ● = Set 3/8" rebar w/ MKEC CLS 39 id. cap  
 ⊕ = Benchmark  
 (M) = Measured  
 (P) = Platted  
 (D) = Described  
 (CM) = Calculated from Measurement  
 (CP) = Calculated from Plat  
 (CD) = Calculated from Described  
 Drng. = Drainage  
 Util. = Utility  
 Sdwk. = Sidewalk  
 St. = Street  
 Esmt. = Easement  
 ① = Lot  
 ① = Block



**BENCHMARK**  
 BM#1 Chiseled "X" top of north curb on north access drive to Meritrust Credit Union from Meridian Ave. 45' northwest of sanitary manhole, 40 feet east of back of curb corner, 29 feet north of south access drive back of curb.  
 Elev.=1329.89 NAVD88

**BENCHMARK**

Chiseled "X" top of north curb on north access drive to Meritrust Credit Union from Meridian Ave. 45' northwest of sanitary manhole, 40 feet east of back of curb corner, 29 feet north of south access drive back of curb. Elev.=1329.89 NAVD88



\*CONTINUED ON PAGE 4\*

\*CONTINUED ON PAGE 4\*

\*CONTINUED ON PAGE 2\*

\*CONTINUED ON PAGE 2\*