

J:\PROJECTS\2022\12\10\10427\_PERFECTION\_COURTYARDS AT THE MOORINGS\05 CIVIL\SW\COLLECTOR\210427-05-4000.DWG  
 PLOTTED: Friday, January 06, 2023 @ 04:53PM

## GENERAL NOTES

- THE CONTRACTOR SHALL COMPLY WITH ALL APPLICABLE SAFETY REGULATIONS. ALL CONSTRUCTION SHALL BE COMPLETED FOLLOWING CURRENT CITY STANDARD SPECIFICATIONS AND SPECIAL PROVISIONS.
- CONTRACTOR WILL BE REQUIRED TO PROVIDE NOTICE TO UTILITY COMPANIES A MINIMUM OF SEVENTY-TWO (72) HOURS PRIOR TO ANY EXCAVATION, AS FOLLOWS:

KANSAS ONE-CALL 687-2470

THE CONTRACTOR MUST NOTIFY THE FOLLOWING IN CASE OF AN EMERGENCY:

AT&T	1-316-246-8464
BLACK HILLS ENERGY (GAS)	1-800-694-8989
CITY OF WICHITA WATER & SEWER	1-316-219-8921
CITY OF WICHITA STORMWATER	1-316-268-4090
CITY OF WICHITA TRAFFIC	1-316-268-4034
COX COMMUNICATIONS	1-888-249-3530
KANSAS GAS SERVICE	1-888-482-4950
EVERGY	1-800-544-4857

- UTILITY SERVICE LINES, POLES, ETC. ARE TO BE ADJUSTED AS NECESSARY BY OTHERS PRIOR TO CONSTRUCTION UNLESS THE PLANS SPECIFICALLY CALL FOR THEIR ADJUSTMENT BY THE CONTRACTOR OR UNLESS THE PLANS SPECIFICALLY IDENTIFY A UTILITY TO BE ADJUSTED BY ITS OWNER DURING CONSTRUCTION. EXISTING UTILITIES AND THEIR LOCATION, AS SHOWN ON THE PLANS, REPRESENT THE BEST INFORMATION OBTAINABLE FOR DESIGN. THE CONTRACTOR WILL BE REQUIRED TO WORK AROUND EXISTING UTILITIES WITHIN THE RIGHT-OF-WAY WHICH DO NOT CONFLICT WITH PROPOSED CONSTRUCTION.
- RUBBLE FROM THE REMOVAL OF MISCELLANEOUS STRUCTURES AND EXCESS EXCAVATION WHICH IS TO BE WASTED SHALL BE DISPOSED OF ON SITES TO BE PROVIDED BY THE CONTRACTOR. THESE SITES SHALL BE APPROVED BY THE ENGINEER AS TO SUITABILITY, APPEARANCE AND SITE LOCATION. LOCATIONS, IN THE OPINION OF THE ENGINEER, THAT WILL LEAVE AN UNSIGHTLY APPEARANCE WILL NOT BE APPROVED. ALL DISPOSAL SITES MUST BE APPROVED BY THE KANSAS DEPARTMENT OF HEALTH AND ENVIRONMENT. MATERIAL EITHER STOCKPILED OR DISPOSED OF IN A FLOOD PLAIN WILL REQUIRE A KANSAS STATE BOARD OF AGRICULTURE PERMIT. ANY MATERIAL DUMPED IN WATERS OF THE UNITED STATES OR WETLANDS IS SUBJECT TO U.S. CORPS OF ENGINEERS PERMITTING REGULATIONS. ANY MATERIAL BURIED OR STOCKPILED BEYOND APPROVED CONSTRUCTION LIMITS WOULD REQUIRE ADDITIONAL ARCHAEOLOGICAL INVESTIGATIONS UNLESS BURIED IN A PREVIOUSLY APPROVED BORROW LOCATION.
- TREES AND SHRUBS IN PUBLIC RIGHT-OF-WAY WHICH ARE IN DIRECT CONFLICT WITH PROPOSED NEW CONSTRUCTION SHALL BE REMOVED BY THE CONTRACTOR WITH THE CITY ENGINEER'S APPROVAL. TREES AND SHRUBS WHICH ARE NOT IN DIRECT CONFLICT WITH PROPOSED NEW CONSTRUCTION SHALL BE SAVED AND PROTECTED FROM DAMAGE.
- THE CONTRACTOR SHALL GIVE ALL PROPERTY OWNERS AND/OR TENANTS OF DEVELOPED PROPERTY ADJUTING THE CONSTRUCTION OF THIS PROJECT A MINIMUM OF TEN (10) DAYS NOTICE PRIOR TO START OF CONSTRUCTION.
- THE CONTRACTOR SHALL BE RESPONSIBLE FOR PRESERVING PROPERTY IRONS. THE CONTRACTOR WILL BE REQUIRED TO RE-ESTABLISH ANY PROPERTY IRONS WHICH ARE DAMAGED OR DESTROYED BY HIS CONSTRUCTION OPERATIONS. SUCH IRONS SHALL BE RE-ESTABLISHED BY A LICENSED LAND SURVEYOR IN ACCORDANCE WITH STATE LAWS.
- THE ENGINEERING DIVISION SHALL FIELD LOCATE WATER VALVES ONE TIME DURING CONSTRUCTION WHEN REQUESTED BY THE CONTRACTOR. IT SHALL BE THE CONTRACTOR'S RESPONSIBILITY TO PRESERVE SUCH FIELD LOCATIONS DURING THE CONSTRUCTION PROCESS. WATER VALVES, VALVE BOXES OR FIRE HYDRANTS DAMAGED DURING CONSTRUCTION SHALL BE REPAIRED BY CONTRACTOR AT HIS OWN EXPENSE. VALVE BOXES AND WATER METERS WITHIN THE PROJECT LIMITS SHALL BE ADJUSTED TO MATCH FIELD GRADES BY THE CONTRACTOR.
- IF TRAFFIC WILL BE IMPACTED BY CONSTRUCTION, A TRAFFIC CONTROL PLAN MUST BE SUBMITTED AND APPROVED BY THE CITY TRAFFIC ENGINEER AT [traffic@wichita.gov](mailto:traffic@wichita.gov) BEFORE CONSTRUCTION CAN BEGIN. THE CONTRACTOR SHALL BE RESPONSIBLE FOR ALL TRAFFIC CONTROL MEASURES TO FACILITATE CONSTRUCTION. ALL CONSTRUCTION ZONE MARKINGS AND SIGNAGE SHALL CONFORM TO THE LATEST VERSION OF THE MANUAL ON UNIFORM TRAFFIC CONTROL DEVICES (MUTCD) AS PUBLISHED BY THE US DEPT. OF TRANSPORTATION. FEDERAL HIGHWAY ADMINISTRATION. ALL COSTS ASSOCIATED WITH CONSTRUCTION MARKINGS AND SIGNAGE SHALL BE THE CONTRACTOR'S RESPONSIBILITY.
- ALL AREAS DISTURBED DURING CONSTRUCTION THAT WILL NOT BE UNDER PROPOSED PAVEMENT SHALL BE RESTORED TO MATCH EXISTING CONDITIONS. SEEDING TO BE: ANNUAL RYE @ 150 LBS./ACRE & SLOW RELEASE @ 150 LBS./ACRE
- CONTRACTOR SHALL LIMIT THE EXTENT OF TRENCH OPEN OVERNIGHT AND WEEKENDS TO LESS THAN 50 FEET.
- EXISTING UTILITIES AND THEIR LOCATION, AS SHOWN ON THE PLANS REPRESENT THE BEST INFORMATION OBTAINABLE FOR DESIGN. LOCATION INFORMATION HAS BEEN OBTAINED FROM THE VARIOUS COMPANIES AND IS EITHER FROM COMPANY UTILITY DRAWINGS OR COMPANY PROVIDED FIELD LOCATIONS. THE PLAN LOCATIONS SHOWN ARE NOT GUARANTEED. ADDITIONAL EXISTING UTILITIES MAY ALSO BE ENCOUNTERED.
- A PORTION OF EXCESS EXCAVATED MATERIAL SHALL BE MOUNDING AROUND MANHOLES WHICH EXTEND MORE THAN ONE (1) FOOT ABOVE THE EXISTING GROUND. SUCH MOUND SHALL BE CONSTRUCTED WITH NEW DEVELOPMENT A SIX (6) FOOT DIAMETER FLAT TOP WITH 4 TO 1 SIDE SLOPES DOWN TO THE ORIGINAL GROUND. THE ELEVATION OF THE FLAT TOP OF THE MOUND SHALL BE 0.4 FOOT BELOW THE TOP OF THE MANHOLE.
- CONTRACTOR SHALL PROVIDE POSITIVE DRAINAGE AWAY FROM ALL MANHOLE COVERS.
- ALL TRAFFIC CONTROL DEVICES IN THE WORK ZONE (INCLUDING MARKINGS AND SIGNS) AND THEIR INSTALLATION AND MAINTENANCE SHALL COMPLY WITH THE LATEST EDITION OF THE MANUAL ON UNIFORM TRAFFIC CONTROL DEVICES (MUTCD). ALL TRAFFIC CONTROL DEVICES IN THE TRAVELED WAY OR CLEAR ZONE SHALL BE CRASHWORTHY (NCHRP REPORT 350 OR MASH COMPLIANT). [https://safety.fhw.dot.gov/roadway\\_dept/countermeasures/reduce\\_crash\\_severity/](https://safety.fhw.dot.gov/roadway_dept/countermeasures/reduce_crash_severity/)
- ALL CONSTRUCTION EQUIPMENT, INCLUDING VEHICLES, MATERIALS, AND DEBRIS, SHALL BE STORED OUTSIDE OF THE CLEAR ZONE. WHERE THIS CANNOT BE ACHIEVED THE CONTRACTOR SHALL PLACE APPROPRIATE SIGNS, OBJECT IDENTIFIERS, AND/OR BARRICADES IN COMPLIANCE WITH MUTCD.
- EXCEPT WHEN REQUIRED FOR SAFETY, TRAFFIC CONTROL SHALL NOT BLOCK ANY LANES OR SIDEWALKS WHEN WORK IS NOT BEING PERFORMED.
- SAND BACKFILL. IF SUITABLE SAND MATERIAL IS FOUND ON SITE FOR BACKFILL, CONTRACTOR MAY BE ALLOWED TO USE ON SITE MATERIAL AT THE DISCRETION OF THE PROJECT ENGINEER. IF THE PROJECT ENGINEER DETERMINES ON-SITE MATERIAL IS NOT SUITABLE, THEN CONTRACTOR MUST HAUL IN FILL SAND. IN THE EVENT NOT ENOUGH SUITABLE MATERIAL FOR BACKFILL IS FOUND ON-SITE, THE BALANCE SHALL BE PROVIDED BY CONTRACTOR.
- DEVELOPER FOR THIS PROJECT IS:  
PERFECTION SIGNATURE PROPERTIES, LLC  
443 N MAIZE RD  
WICHITA, KS 67212  
SCOTT LEHNER/JASON RONK  
316.729.1900

# PAVING & INCIDENTAL DRAINAGE PLANS FOR PART A

# COURTYARDS AT THE MOORINGS

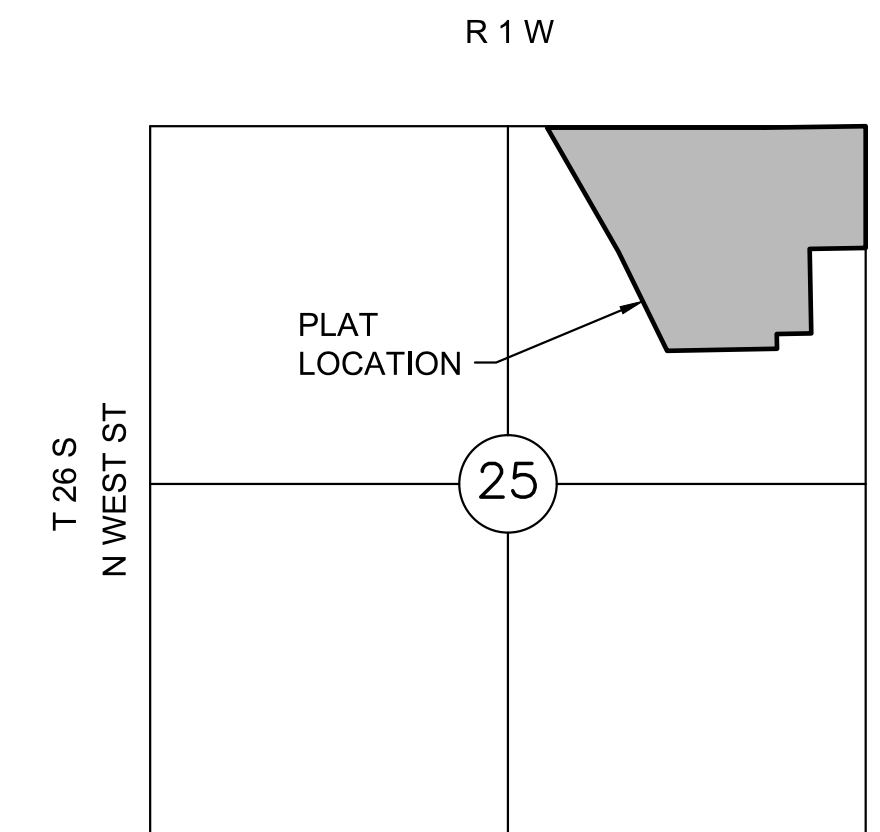
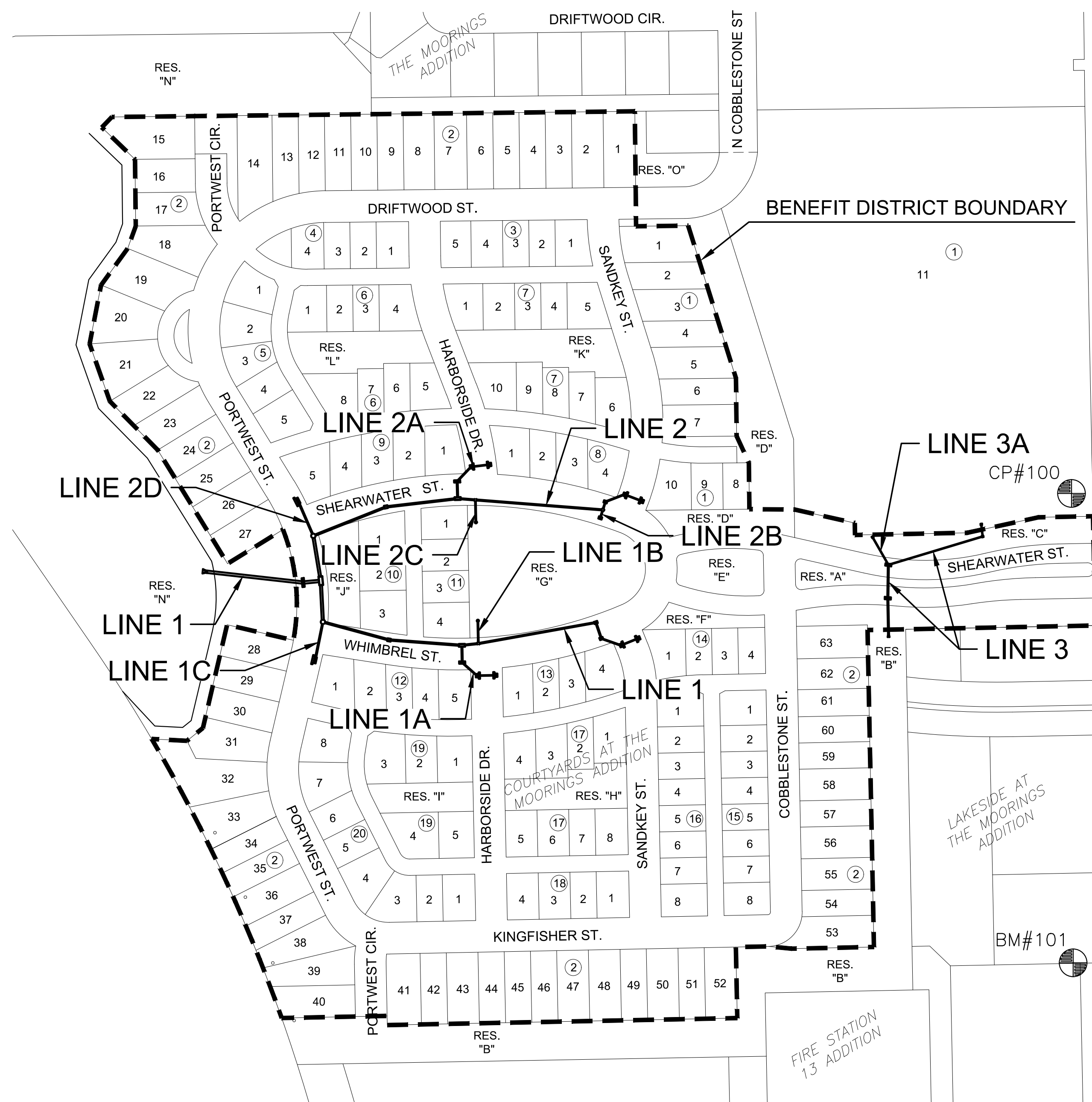
PROJECT NO. 472-2022-085819A

AN ADDITION TO THE CITY OF WICHITA, SEDGWICK COUNTY, KANSAS  
GARY JANZEN, P.E. - CITY ENGINEER

ORG CODE 47470922

MUNIS NO. E2068

LOTS 1-10, BLOCK 1; LOTS 1-63, BLOCK 2; LOTS 1-5, BLOCK 3; LOTS 1-4, BLOCK 4;  
LOTS 1-5, BLOCK 5; LOTS 1-8, BLOCK 6; LOTS 1-10, BLOCK 7; LOTS 1-4, BLOCK 8;  
LOTS 1-5, BLOCK 9; LOTS 1-3, BLOCK 10; LOTS 1-4, BLOCK 11; LOTS 1-5, BLOCK 12;  
LOTS 1-4, BLOCK 13; LOTS 1-4, BLOCK 14; LOTS 1-8, BLOCK 15; LOTS 1-8, BLOCK 16;  
LOTS 1-8, BLOCK 17; LOTS 1-4, BLOCK 18; LOTS 1-5, BLOCK 19; LOTS 1-8, BLOCK 20



## VICINITY MAP

No Scale

## INDEX TO DRAWINGS

SHEET NO.	DESCRIPTION
01	TITLE SHEET
02-08	STORM WATER DETAILS
09-10	LINE 1
11	LINES 1A
12	LINES 1B & 1C
13-14	LINE 2
15	LINES 2A & 2B
16	LINES 2C & 2D
17	LINE 3 & 3A
18	EROSION CONTROL PLAN
19	BUBBLE MAP
20-24	BMP DETAILS
25-28	FINAL PLAT

## BENCHMARKS

CP100  
N:1714419.007 E:1638538.082 EL:1328.839  
PK-NAIL

CP101  
N:1713560.118 E:1638541.17 EL:1329.886  
CHISELED "X"

BM 101  
N:1713560.118 E:1638541.17 EL:1329.886(88)  
CHISELED "X"

## DATUM

The Horizontal Datum is based on the Kansas Coordinate System of 1983, NAD83(2011), EPOCH:2010.0000, South Zone. Coordinates shown have been modified to the ground using a combined adjustment factor of 1.0001200144. State Plane coordinates can be calculated by multiplying the shown values by 0.99988.

All elevations shown are based on the NAVD 88 vertical datum, Geoid12b.

## NOTE

All Control Points shown have elevations established using standard surveying procedures and can be used as temporary benchmarks. When using a Control point as a temporary benchmark, it is recommended that cross-checks be made to other control points or benchmarks to confirm elevations prior to use.

Stormwater Certification:	
<input checked="" type="checkbox"/> New Development or Redevelopment (Circle One)	
Stormwater Permit #	SWO2022--
NOI Permit #	S--
These construction plans were prepared in accordance with the current Stormwater management Regulations as set forth in the City of Wichita's Stormwater Management Ordinance 16.32 and the policies/guidelines presented in the Wichita/Sedgwick County Stormwater Manual.	
Site Area (Acres) =	43.5
Disturbed Area (Acres) =	42.5
Water Quality Treatment:	Offsite BMP Program
Downstream Channel Protection:	N/A
Detention:	Existing Onsite Groundwater Pond
The BMP used for this development is <u>Offsite BMP Program</u>	



PAVING & INCIDENTAL DRAINAGE PLANS FOR PART A  
**COURTYARDS AT THE MOORINGS**  
 COLLECTOR PHASE

©2023  
MKEC Engineering  
All Rights Reserved  
www.mkec.com  
These drawings and their contents, including, but not limited to, all concepts, designs, & ideas are the exclusive property of MKEC Engineering (MKEC), and may not be used or reproduced in any way without the express consent of MKEC.

## TITLE SHEET

PROJECT NO.	472-2022-085819A	
DATE	JAN. 2023	
SCALE	1" = 150'	
DESIGNED	DRAWN	CHECKED
DFL	JRB	SPE
NO.	REVISION	DATE
SHEET NO.		
01 OF 28		