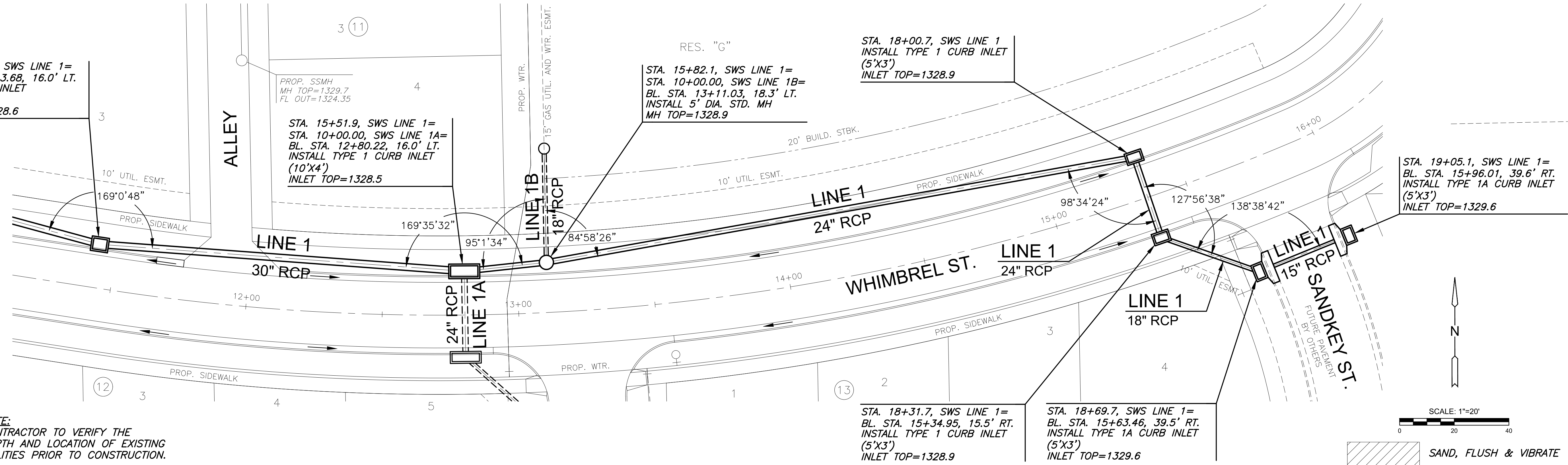


PLOTTED: Friday, January 06, 2023 @ 04:57PM

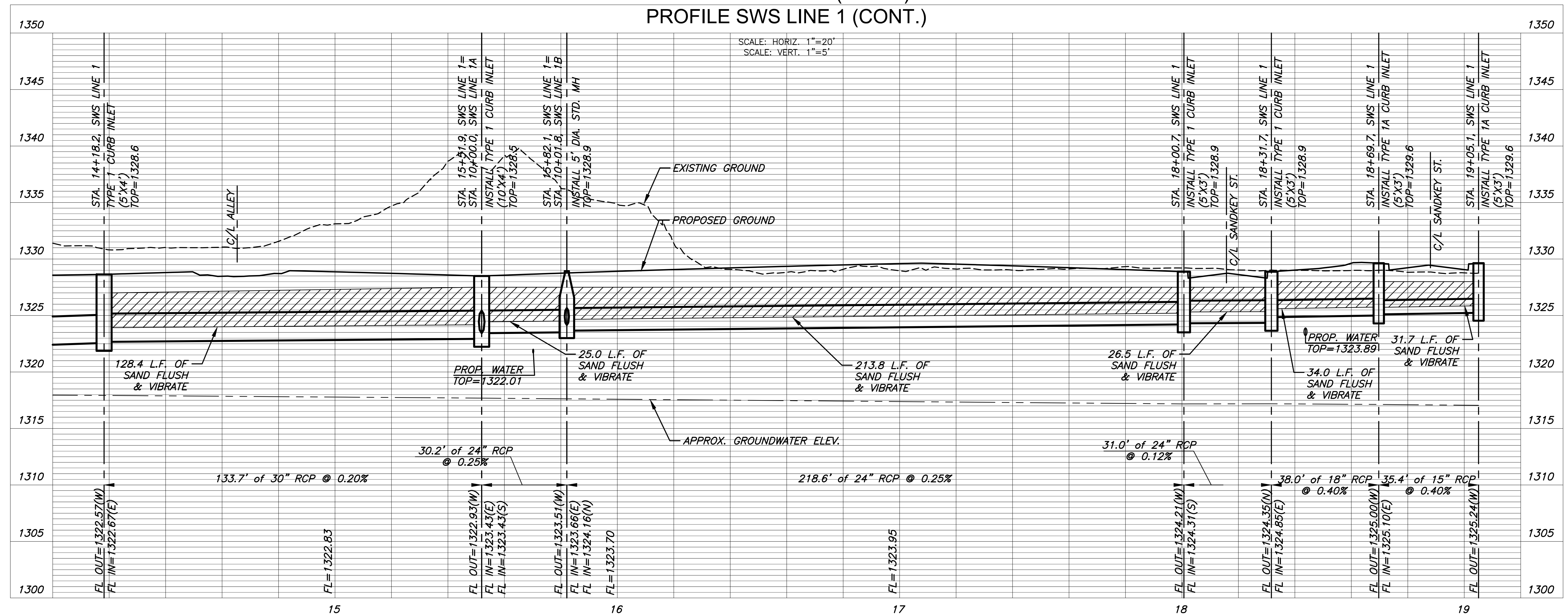
J:\PROJECTS\2022\12\10\10427_PERFECTION_COURTYARDS AT MOORINGS\DWG 2\0427 CAD\SHS\05_CIVIL\SWS\COLLECTOR\21427-05-4201.DWG

STA. 14+18.2, SWS LINE 1=
BL. STA. 11+43.68, 16.0' LT.
TYPE 1 CURB INLET
(5'X4')
INLET TOP=1328.6



NOTE:
CONTRACTOR TO VERIFY THE
DEPTH AND LOCATION OF EXISTING
UTILITIES PRIOR TO CONSTRUCTION.

PLAN SWS LINE 1 (CONT.)
PROFILE SWS LINE 1 (CONT.)



PAVING & INCIDENTAL DRAINAGE PLANS FOR PART A
COURTYARDS AT THE MOORINGS
 COLLECTOR PHASE

©2023
MKEC Engineering
All Rights Reserved
www.mkec.com
These drawings and their contents, including, but not limited to, all concepts, designs, & ideas are the exclusive property of MKEC Engineering (MKEC), and may not be used or reproduced in any way without the express consent of MKEC.

LINE 1 (CONT.)

PROJECT NO.	472-2022-085819A	
DATE	JAN. 2023	
SCALE	1" = 20'	
DESIGNED	DRAWN	CHECKED
DFL	LAL	SPE

NO.	REVISION	DATE

SHEET NO.