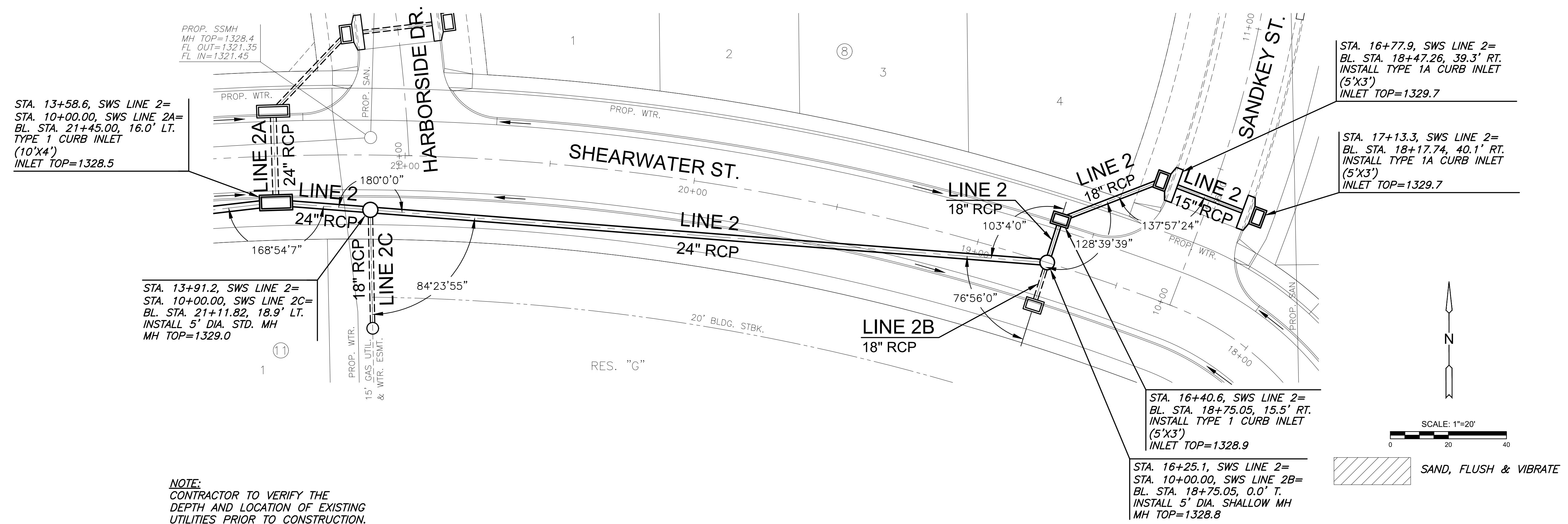
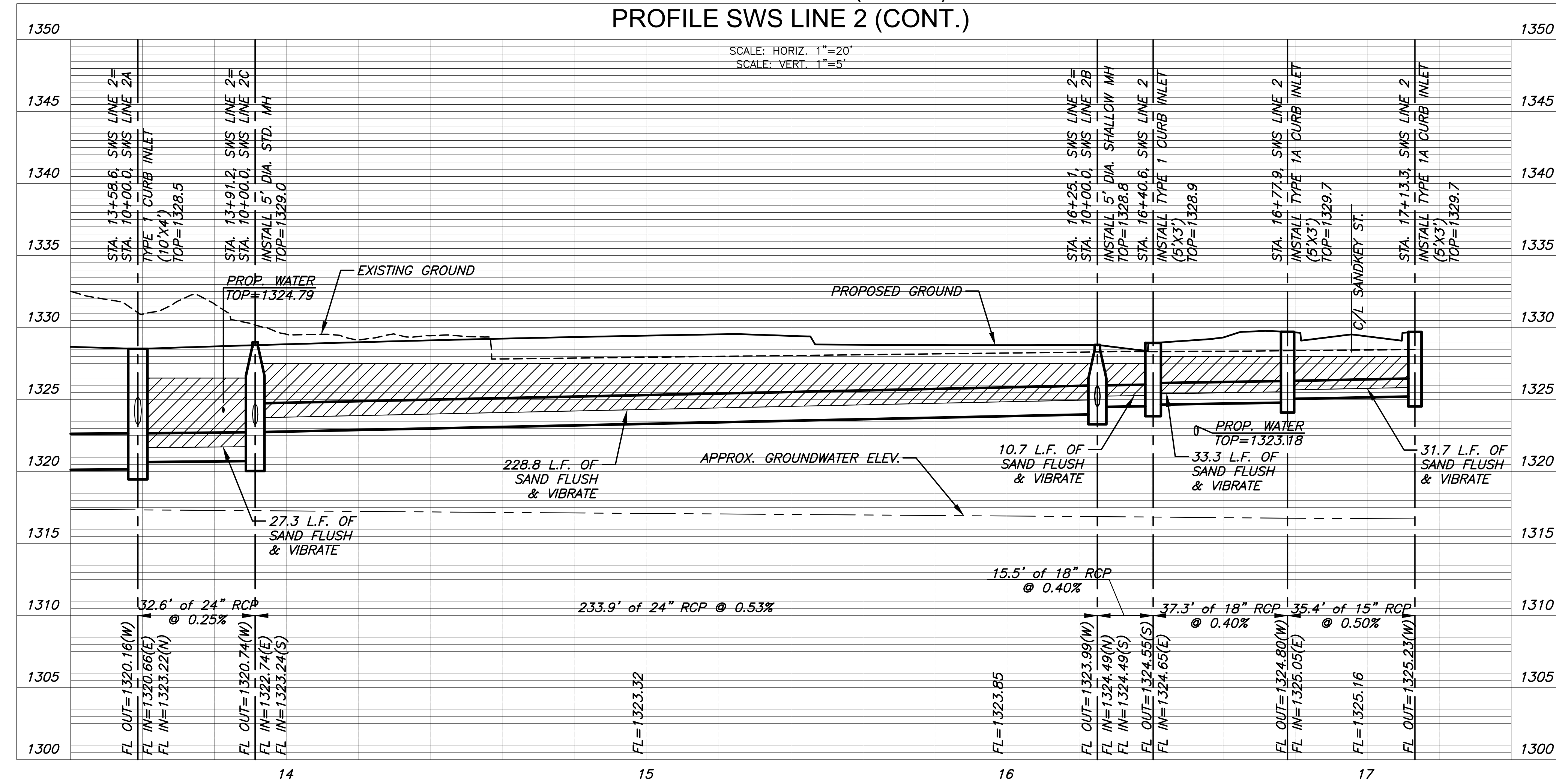


J:\PROJECTS\2022\12\10\10427\_PERFECTION\_COURTYARDS AT MOORINGS\DWG 2\10427 CAD\SHS\505\_CIVIL\SWS\COLLECTOR\21427-05-4205.DWG  
 PLOTTED: Friday, January 06, 2023 @ 06:02PM



**NOTE:**  
 CONTRACTOR TO VERIFY THE DEPTH AND LOCATION OF EXISTING UTILITIES PRIOR TO CONSTRUCTION.

PLAN SWS LINE 2 (CONT.)  
 PROFILE SWS LINE 2 (CONT.)



PAVING & INCIDENTAL DRAINAGE PLANS FOR PART A  
**COURTYARDS AT THE MOORINGS**  
 COLLECTOR PHASE

©2023  
 MKEC Engineering  
 All Rights Reserved  
 www.mkec.com  
 These drawings and their contents, including, but not limited to, all concepts, designs, & ideas are the exclusive property of MKEC Engineering (MKEC), and may not be used or reproduced in any way without the express consent of MKEC.

LINE 2 (CONT.)

PROJECT NO.	472-2022-085819A
DATE	JAN. 2023
SCALE	1" = 20'
DESIGNED	DFL
DRAWN	JRB
CHECKED	SPE

NO.	REVISION	DATE