

STORM WATER SEWER POINTS			
Point #	Northing	Easting	Desc.
4000	1714276.97	1636946.03	ES
4001	1714256.49	1637131.34	INLET
4002	1714259.23	1637159.19	INLET
4003	1714184.24	1637166.05	MH
4004	1714114.60	1637150.34	INLET
4005	1714149.36	1637286.72	INLET
4006	1714139.47	1637420.40	INLET
4007	1714111.48	1637420.91	INLET
4008	1714086.02	1637449.46	INLET
4009	1714086.66	1637481.80	INLET
4010	1714144.73	1637450.45	MH
4011	1714186.38	1637449.61	MH
4012	1714181.82	1637666.10	INLET
4013	1714155.30	1637675.07	INLET
4014	1714141.92	1637712.85	INLET
4015	1714154.11	1637742.82	INLET
4016	1714341.75	1637148.45	MH
4017	1714405.22	1637119.26	INLET
4018	1714396.68	1637281.05	INLET
4019	1714412.01	1637412.62	INLET
4020	1714440.01	1637411.74	INLET
4021	1714468.28	1637438.44	INLET
4022	1714472.09	1637470.55	INLET
4023	1714407.48	1637445.17	MH
4024	1714366.66	1637445.99	MH

STORM WATER SEWER POINTS			
Point #	Northing	Easting	Desc.
4025	1714389.34	1637678.33	MH
4026	1714375.97	1637674.11	INLET
4027	1714402.67	1637682.54	INLET
4028	1714417.05	1637719.21	INLET
4029	1714405.47	1637749.43	INLET
4030	1714156.61	1638201.26	ES
4031	1714229.12	1638199.98	INLET
4032	1714287.26	1638200.67	INLET
4033	1714339.30	1638172.03	INLET
4034	1714340.66	1638373.42	INLET
4035	1714362.68	1638370.93	INLET

CONTROL POINTS

CP100
N:1714419.007 E:1638538.082 EL:1328.839
PK-NAIL

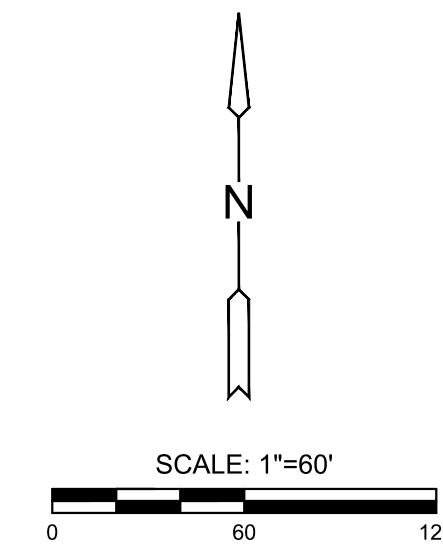
CP101
N:1713560.118 E:1638541.17 EL:1329.886
CHISELED "X"

BM 101
N:1713560.118 E:1638541.17 EL:1329.886(88)
CHISELED "X"

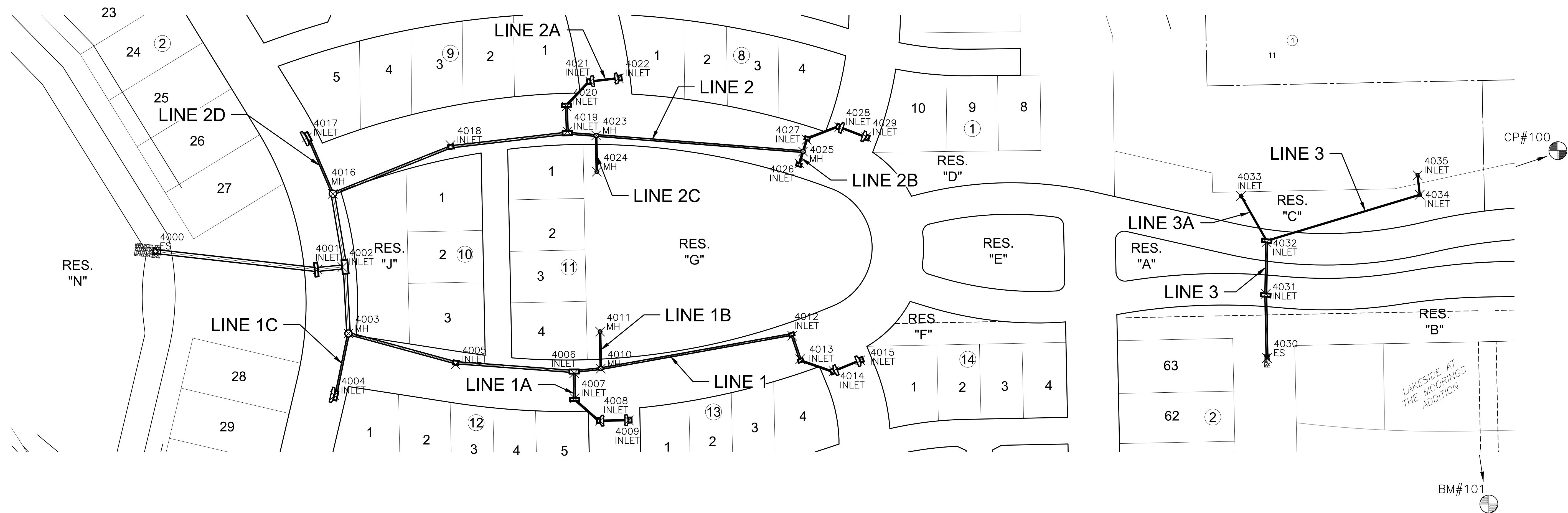
Datum:

The Horizontal Datum is based on the Kansas Coordinate System of 1983, NAD83(2011), EPOCH:2010.0000, South Zone. Coordinates shown have been modified to the ground using a combined adjustment factor of 1.0001200144. State Plane coordinates can be calculated by multiplying the shown values by 0.99988.

All elevations shown are based on the NAVD 88 vertical datum, Geoid12b.



EVERY ATTEMPT HAS BEEN MADE TO INSURE ALL COORDINATE VALUES SHOWN ARE AN ACCURATE AND TRUE REPRESENTATION OF THE CURRENT PLANS. ALL VALUES ARE TO BE CONFIRMED WITH THE FINAL SIGNED PLAN SET BEFORE USE.



©2023
MKEC Engineering
All Rights Reserved
www.mkec.com
These drawings and their contents, including, but not limited to, all concepts, designs, & ideas are the exclusive property of MKEC Engineering (MKEC), and may not be used or reproduced in any way without the express consent of MKEC.

BUBBLE MAP

PROJECT NO.	472-2022-085819A	
DATE	JAN. 2023	
SCALE	1" = 60'	
DESIGNED	DRAWN	CHECKED
DFL	JRB	SPE

NO.	REVISION	DATE

SHEET NO.