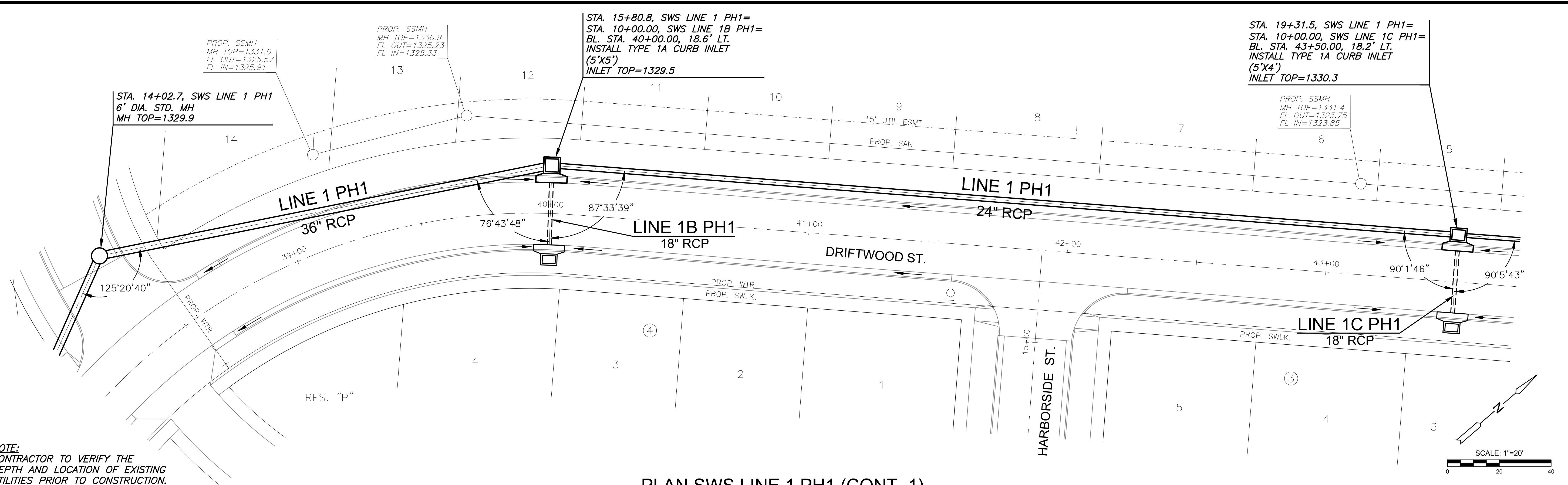
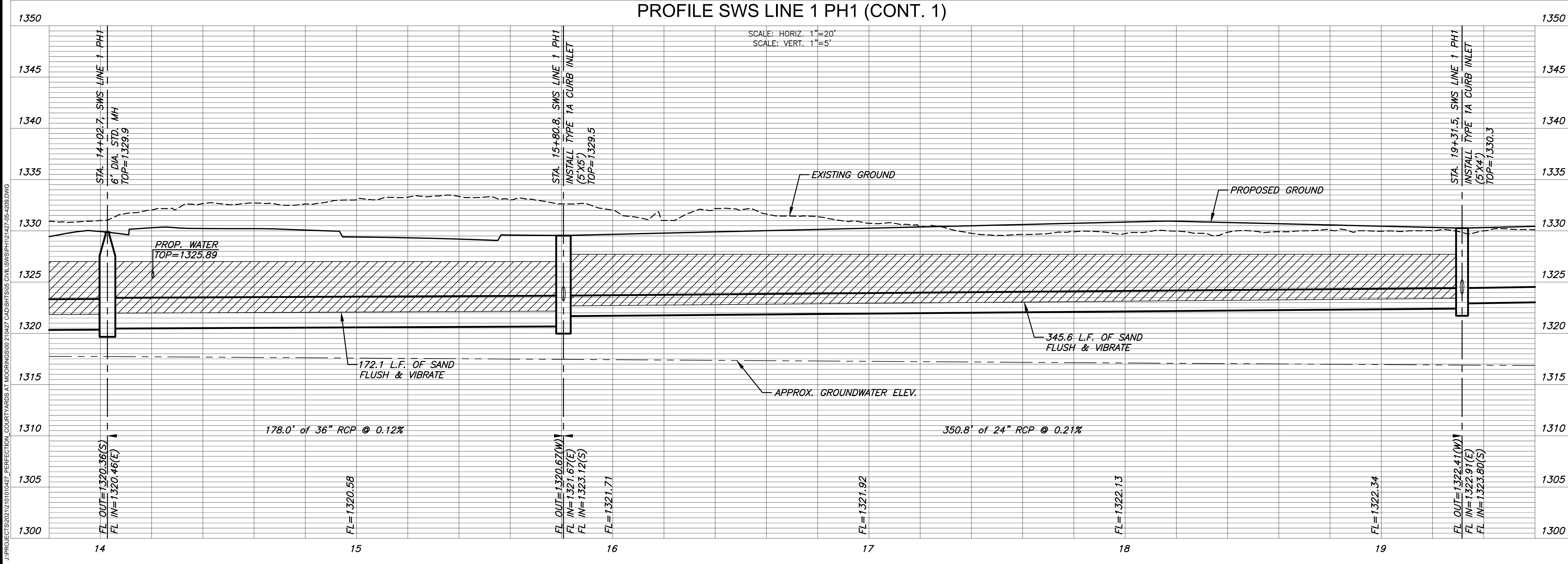


J:\PROJECTS\2022\12\10\10427_PERFECTION_COURTYARDS_AT_MOORINGS\DWG\12\10427_CAD\SHOTS\05_SVLS\SWS\PH1\12\1427-05-4208.DWG
 PLOTTED: Friday, January 06, 2023 @ 08:15PM



NOTE:
 CONTRACTOR TO VERIFY THE DEPTH AND LOCATION OF EXISTING UTILITIES PRIOR TO CONSTRUCTION.

PLAN SWS LINE 1 PH1 (CONT. 1)
 PROFILE SWS LINE 1 PH1 (CONT. 1)



PAVING & INCIDENTAL DRAINAGE PLANS FOR
COURTYARDS AT THE MOORINGS
 PHASE 1 PART A

©2023
 MKEC Engineering
 All Rights Reserved
 www.mkec.com
 These drawings and their contents, including, but not limited to, all concepts, designs, & ideas are the exclusive property of MKEC Engineering (MKEC), and may not be used or reproduced in any way without the express consent of MKEC.

SWS LINE 1 (CONT.)		
PROJECT NO.	472-2022-085820A	
DATE	JAN. 2023	
SCALE	1" = 20'	
DESIGNED	DRAWN	CHECKED
DFL	JWC	SPE
NO.	REVISION	DATE
SHEET NO. 07 OF 25		