

J:\PROJECTS\2022\121010427_PERFECTION_COURTYARDS AT MOORINGS\DWG 210427 CAD\SH1505 CIVIL\SW\PH1121427-05-4500.DWG
 PLOTTED: Friday, January 06, 2023 @ 08:23PM

STORM WATER SEWER POINTS			
Point #	Northing	Easting	Desc.
4100	1714826.75	1636724.47	ES
4101	1714742.13	1636933.28	INLET
4102	1714739.07	1636965.52	INLET
4103	1714912.38	1636989.42	MH
4104	1714959.89	1637160.41	INLET
4105	1714927.58	1637162.13	INLET
4106	1714964.11	1637511.05	INLET
4107	1714931.77	1637511.41	INLET
4108	1714968.25	1637834.66	INLET
4109	1715036.49	1637833.72	MH
4110	1714936.02	1637837.70	INLET
4111	1714884.76	1637855.82	MH
4112	1714774.01	1637890.54	MH
4113	1714632.38	1637934.95	MH
4114	1714560.85	1637935.75	MH
4115	1714615.10	1637998.38	ES
4116	1715052.16	1636741.08	ES
4117	1715098.25	1636783.18	MH
4118	1715099.93	1636937.96	MH
4119	1715101.35	1637067.95	MH

STORM WATER SEWER POINTS			
Point #	Northing	Easting	Desc.
4120	1715102.76	1637197.94	MH
4121	1715104.17	1637327.93	MH
4122	1715105.58	1637457.93	MH
4123	1715106.99	1637587.92	MH
4124	1715108.64	1637739.31	MH

CONTROL POINTS

CP100
 N:1714419.007 E:1638538.082 EL:1328.839
 PK-NAIL

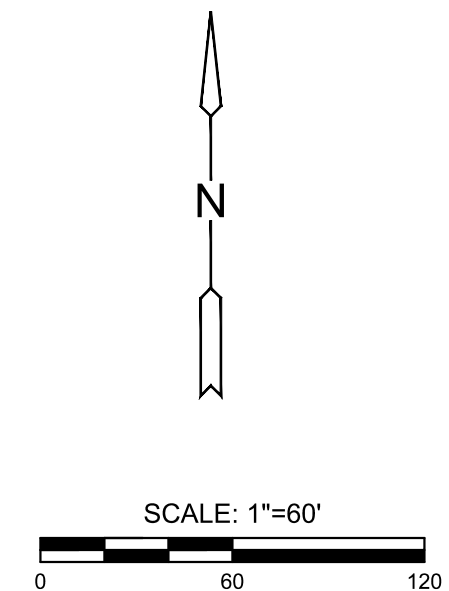
 CP101
 N:1713560.118 E:1638541.17 EL:1329.886
 CHISELED "X"

 BM 101
 N:1713560.118 E:1638541.17 EL:1329.886(88)
 CHISELED "X"

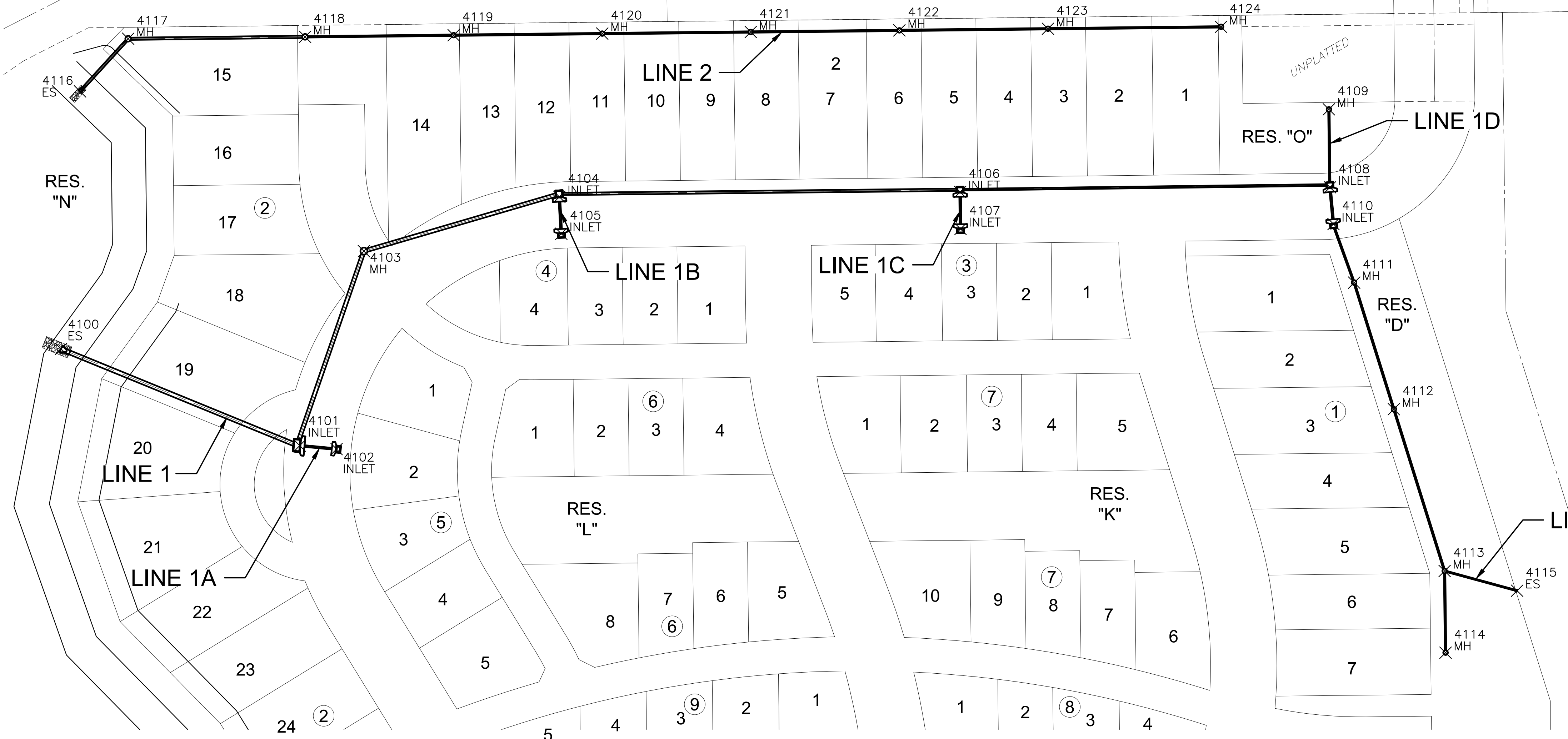
Datum:

 The Horizontal Datum is based on the Kansas Coordinate System of 1983, NAD83(2011), EPOCH:2010.0000, South Zone. Coordinates shown have been modified to the ground using a combined adjustment factor of 1.0001200144. State Plane coordinates can be calculated by multiplying the shown values by 0.99988.

 All elevations shown are based on the NAVD 88 vertical datum, Geoid12b.



EVERY ATTEMPT HAS BEEN MADE TO INSURE ALL COORDINATE VALUES SHOWN ARE AN ACCURATE AND TRUE REPRESENTATION OF THE CURRENT PLANS. ALL VALUES ARE TO BE CONFIRMED WITH THE FINAL SIGNED PLAN SET BEFORE USE.



PAVING & INCIDENTAL DRAINAGE PLANS FOR COURTYARDS AT THE MOORINGS PHASE 1 PART A

©2023
 MKEC Engineering
 All Rights Reserved
 www.mkec.com
 These drawings and their contents, including, but not limited to, all concepts, designs, & ideas are the exclusive property of MKEC Engineering (MKEC), and may not be used or reproduced in any way without the express consent of MKEC.

BUBBLE MAP

PROJECT NO.	472-2022-085820A
DATE	JAN. 2023
SCALE	1" = 60'
DESIGNED	DFL
DRAWN	JRB
CHECKED	SPE

NO.	REVISION	DATE

SHEET NO.
 16 OF 25