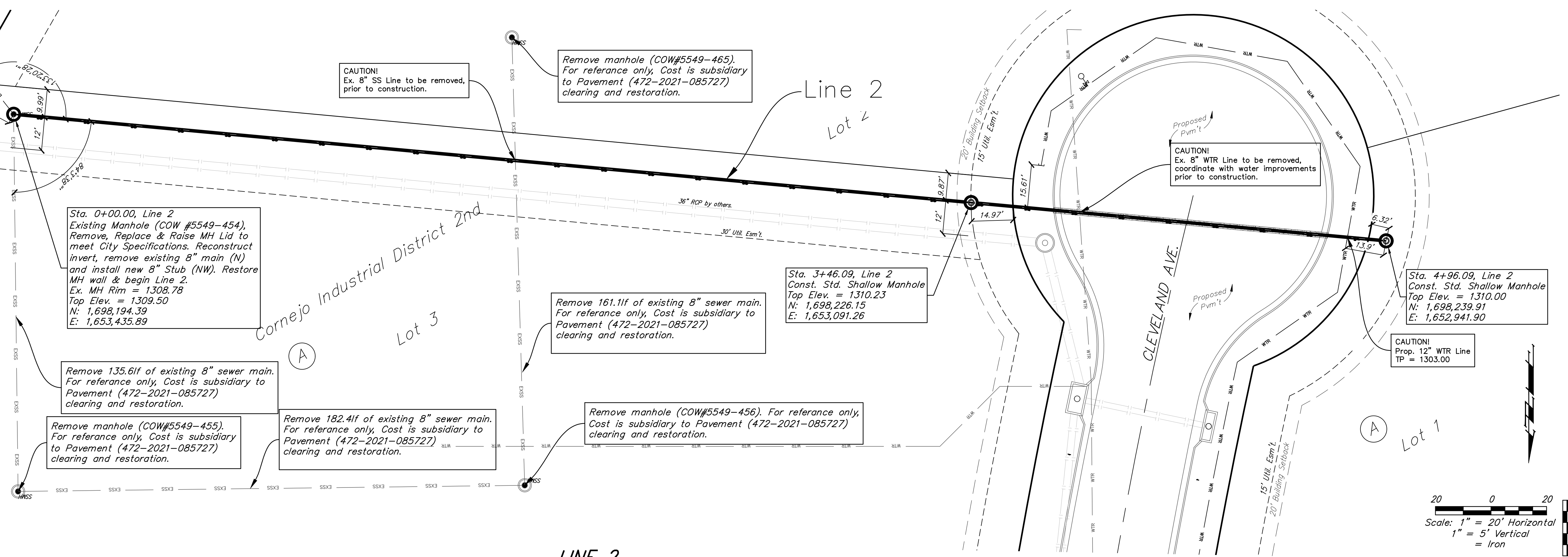
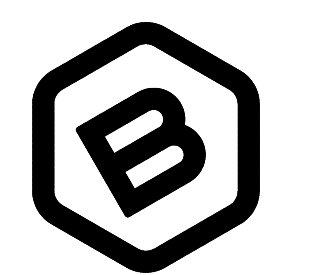
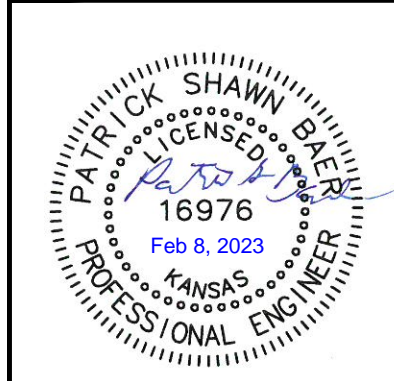
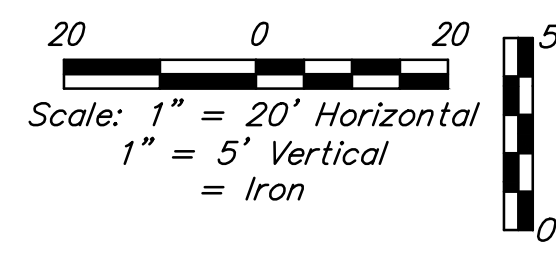
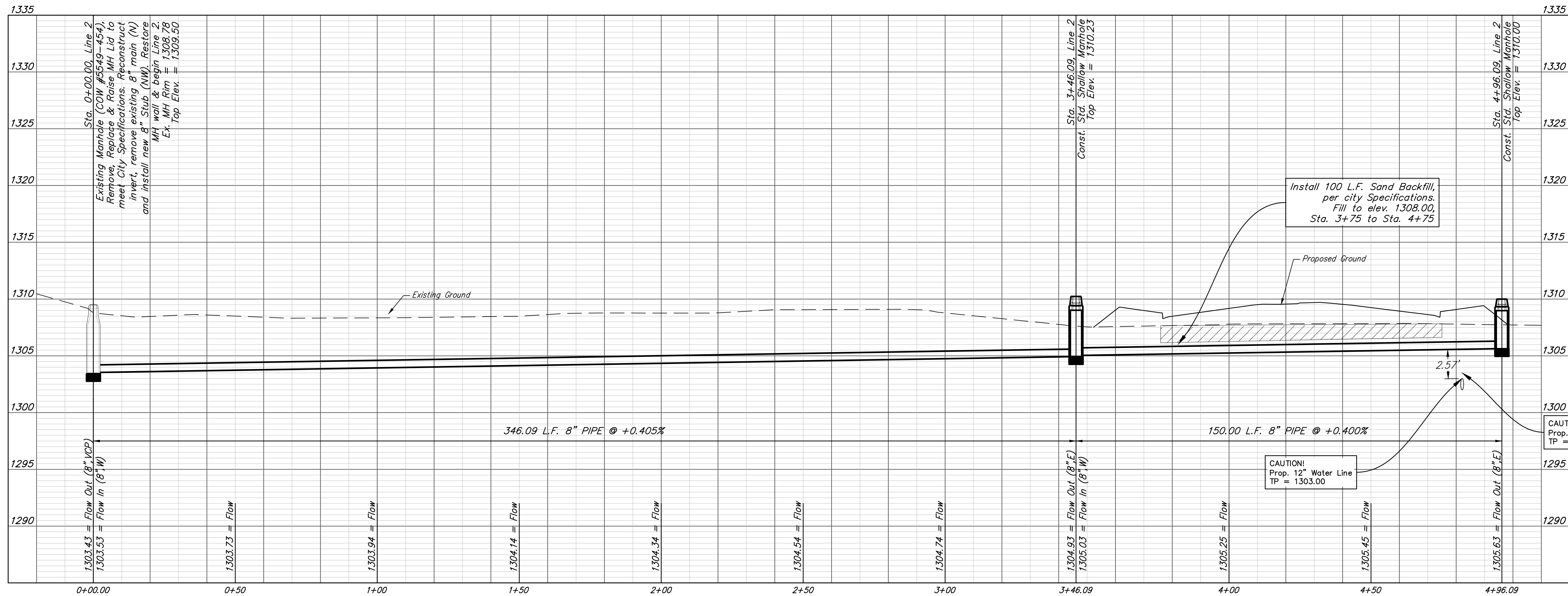


**BENCHMARKS**

- BM- #1:  
Square cut on top of South curb of 21st St. N. 334'± West and 32'± South of the intersection of 21st St. N. and Cleveland Ave.  
Elev. = 1307.56(NAVD88)
- BM- #2:  
Square cut on top of South concrete pad of monitoring well 26'± East and 51'± South of the intersection of 21st St. N. and Cleveland Ave.  
Elev. = 1308.70(NAVD88)
- BM- #3:  
C.O.W BM Disc on top of South concrete wall 918'± West and 147'± North of the intersection of 21st St. N. and Cleveland Ave.  
Elev. = 1312.58(NAVD88)



**LINE 2**



**BAUGHMAN COMPANY**  
315 Ellis St.  
Wichita, KS 67211  
316-262-7271  
BaughmanCo.com

Cornejo Industrial District  
2nd Addition  
**SS Line 2**

Sanitary Sewer Improvements  
PROJECT NUMBER:  
468-2021-017263  
DESIGN: PSB DRAWN: JA  
DATE: February 8, 2023  
SHEET **3** OF **14**

File: E:\Projects\Cornejo Industrial District\_2nd (21-10-F717)\Engineering\Phase 1\SSCID PPS 2nd Petition.dwg