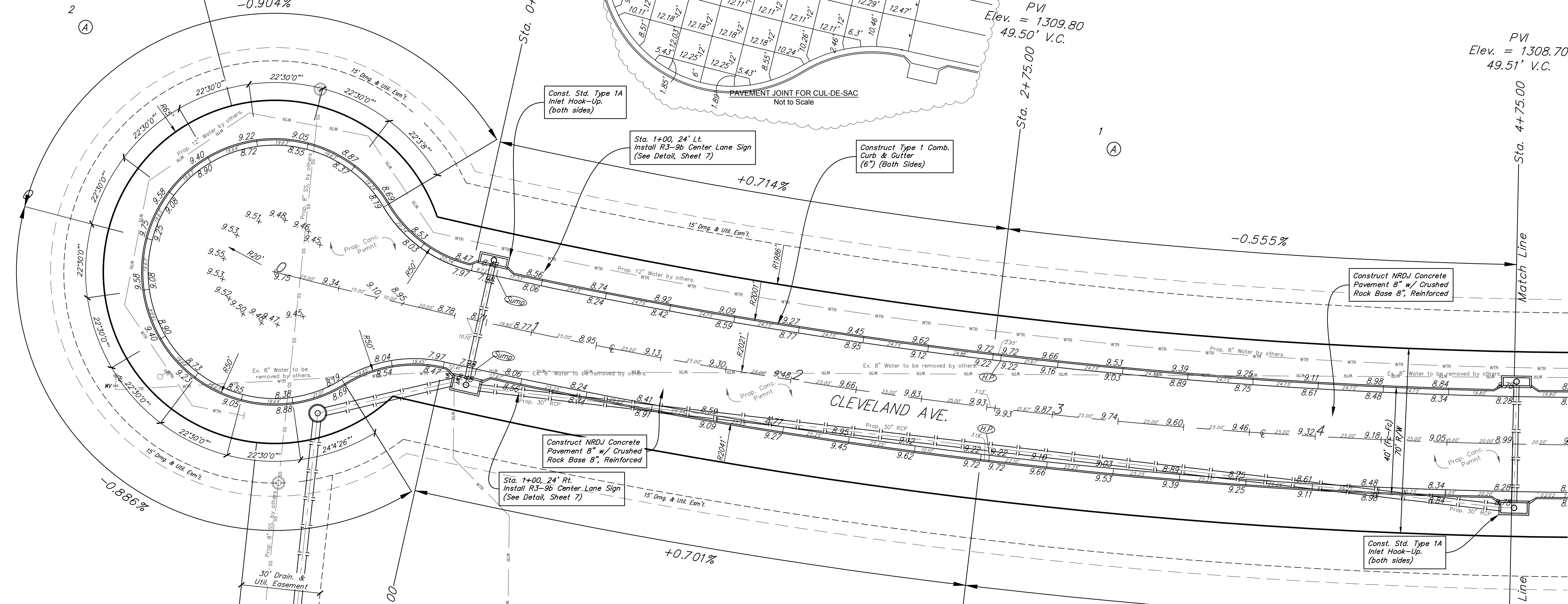
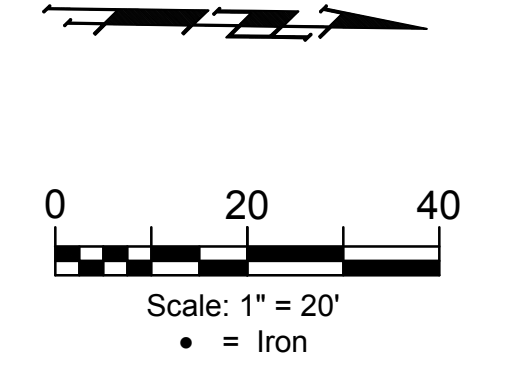


BENCHMARKS:
 Square Cut On Top of South Curb of 21st St. N.
 334'± West and 32'± South of the Intersection of 21st St. N. and Cleveland Ave.
 Elev. = 1307.56(NAVD88)

Square Cut On Top of South Concrete Pad of Monitoring Well 26'± East and 51'± South of The Intersection of 21st St. N. and Cleveland Ave.
 Elev. = 1308.70(NAVD88)

CORNEJO INDUSTRIAL DISTRICT



Curve #1
 Curve Data Based on Centerline
 Rad. = 2021' Delta = 14°36'01" Tangent = 258.90'
 Arc = 515.00' L.C. = 513.60' Def./Ft. = 0.85050 Min.

Station	Arc	Face Chord Lengths 8' Left	8' Right	Defl.	Total Defl.
0+70.00	-	-	-	0'00'00"	0'00'00"
0+72.69	2.69'	2.65'	2.73'	0'02'17"	0'02'17"
1+00.00	27.31'	26.93'	27.69'	0'23'14"	0'25'31"
1+25.00	25.00'	24.65'	25.35'	0'21'16"	0'46'47"
1+50.00	25.00'	24.65'	25.35'	0'21'15"	1'08'02"
1+75.00	25.00'	24.65'	25.35'	0'21'16"	1'29'18"
2+00.00	25.00'	24.65'	25.35'	0'21'16"	1'50'34"
2+25.00	25.00'	24.65'	25.35'	0'21'16"	2'11'50"
2+50.00	25.00'	24.65'	25.35'	0'21'15"	2'33'05"
2+75.00	25.00'	24.65'	25.35'	0'21'16"	2'54'21"
3+00.00	25.00'	24.65'	25.35'	0'21'16"	3'15'37"
3+25.00	25.00'	24.65'	25.35'	0'21'16"	3'36'53"
3+50.00	25.00'	24.65'	25.35'	0'21'15"	3'58'08"
3+75.00	25.00'	24.65'	25.35'	0'21'16"	4'19'24"
4+00.00	25.00'	24.65'	25.35'	0'21'16"	4'40'40"
4+25.00	25.00'	24.65'	25.35'	0'21'16"	5'01'56"
4+50.00	25.00'	24.65'	25.35'	0'21'15"	5'23'11"
4+75.00	25.00'	24.65'	25.35'	0'21'16"	5'44'27"
5+00.00	25.00'	24.65'	25.35'	0'21'16"	6'05'43"
5+15.00	15.00'	14.79'	15.21'	0'12'45"	6'18'28"

PVI
 Elev. = 1308.35
 60.59' V.C.

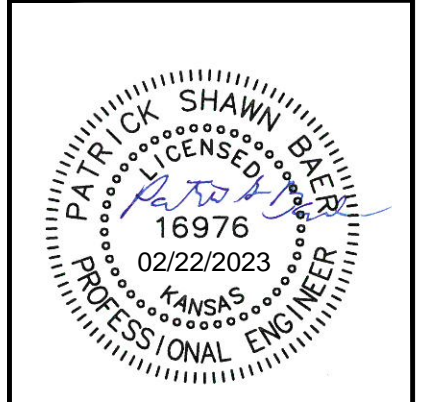
PVI
 Elev. = 1309.80
 50.50' V.C.

PVI
 Elev. = 1308.70
 50.49' V.C.

The Contractor shall coordinate with local utility company on the removal of electric service lines, meters and poles located on site. Contractor shall ensure that all services are located and accounted for before disconnections begin to ensure that adjacent businesses are not affected.

Type 1 curb & gutter to be constructed on the pavement on this sheet. Top of curb elevation are given for Type 1 curb.

Rev. 2-22-23 added pavement joint plan for cul-de-sac.



BAUGHMAN COMPANY
 315 Ellis St.
 Wichita, KS 67211
 316-262-7271
 BaughmanCo.com

CORNEJO INDUSTRIAL DISTRICT
CLEVELAND
 Sta. 0+00.00 to 4+00.00
 Street Paving Improvements

PROJECT NUMBER:
 472-2021-085727
 DESIGN: PSB DRAWN: HJW
 DATE: Jan. 24, 2023
 SHEET OF
10 32

File: E:\Projects\Cornejo Industrial District_2nd (21-10-P717)\Engineering\Phase 1\STRISTR_2.dwg