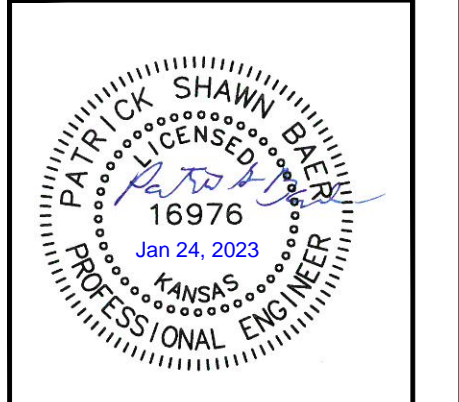
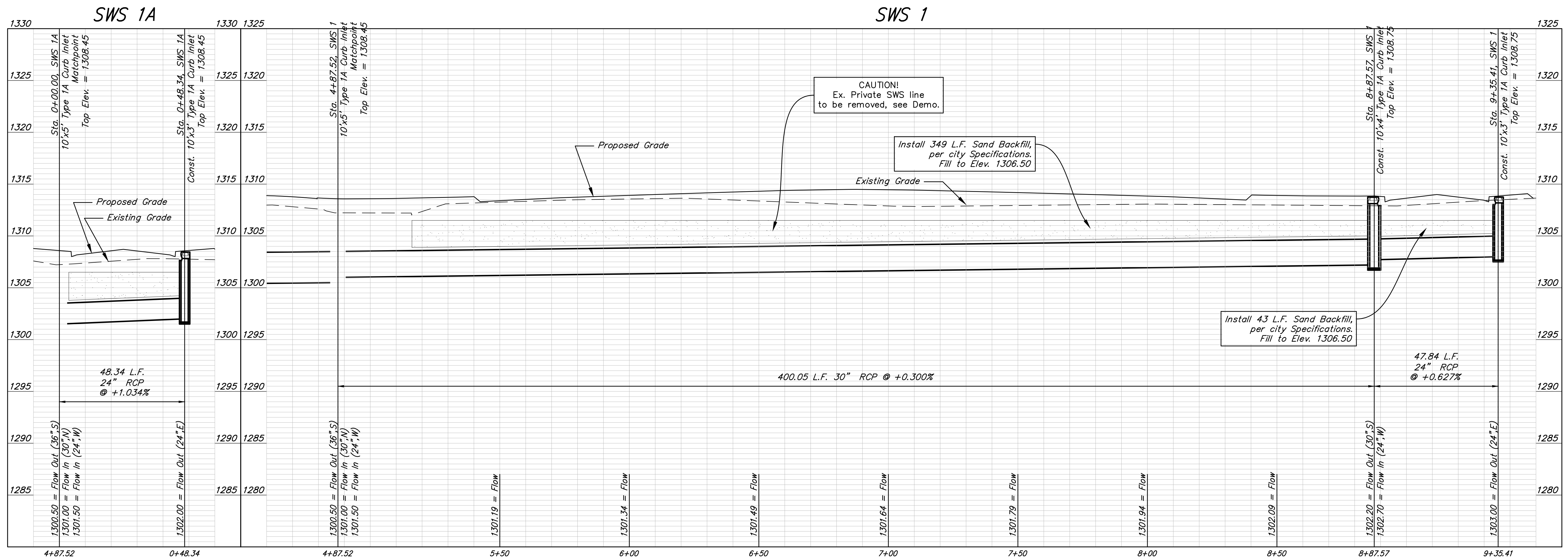


- ### BENCHMARKS
- BM- #1:** Square cut on top of South curb of 21st St. N. 334'± West and 32'± South of the intersection of 21st St. N. and Cleveland Ave. Elev. = 1307.56(NAVD88)
 - BM- #2:** Square cut on top of South concrete pad of monitoring well 26'± East and 51'± South of the intersection of 21st St. N. and Cleveland Ave. Elev. = 1308.70(NAVD88)
 - BM- #3:** C.O.W BM Disc on top of South concrete wall 918'± West and 147'± North of the intersection of 21st St. N. and Cleveland Ave. Elev. = 1312.58(NAVD88)

DEPTH UNKNOWN
Contractor to Verify
Depth & Location of
Existing Product
Recovery Trench
Prior to Construction.



BAUGHMAN COMPANY
315 Ellis St.
Wichita, KS 67211
316-262-7271
BaughmanCo.com

CORNEJO INDUSTRIAL DISTRICT 2nd
SWS LINE 1
Sta. 4+30 to Sta 9+35 & Line 1A

STREET IMPROVEMENTS
Pavement Improvements
PROJECT NUMBER:
472-2021-085727
DESIGN: PSB DRAWN: JA
DATE: Jan. 24, 2023
SHEET OF
13 32

File: E:\Projects\Cornejo Industrial District_2nd (21-10-P717)\Engineering\Phase 1\SWS\CID SWS 2nd Petition.dwg