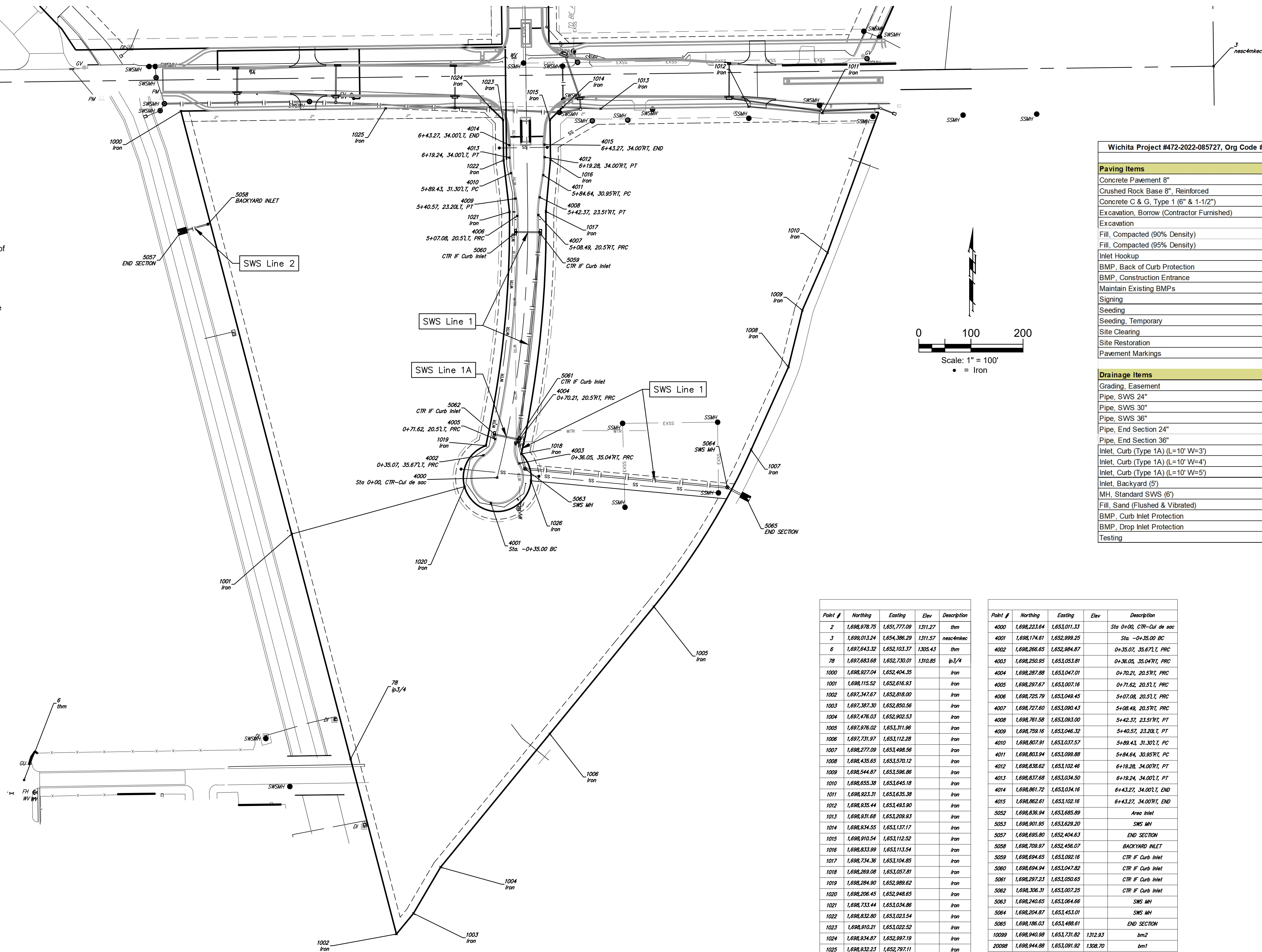


BENCHMARKS

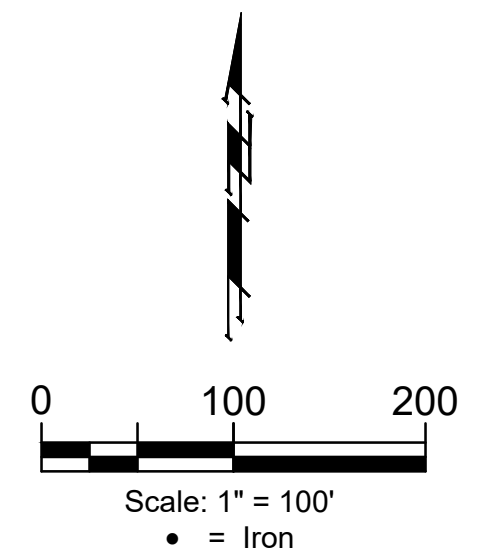
BM- #1:
Square cut on top of South curb of 21st St. N.
334'± West and 32'± South of the intersection of
21st St. N. and Cleveland Ave.
Elev. = 1307.56(NAVD88)

BM- #2:
Square cut on top of South concrete pad of
monitoring well 26'± East and 51'± South of the
intersection of 21st St. N. and Cleveland Ave.
Elev. = 1308.70(NAVD88)

BM- #3:
C.O.W BM Disc on top of South concrete wall
918'± West and 147'± North of the intersection
of 21st St. N. and Cleveland Ave.
Elev. = 1312.58(NAVD88)

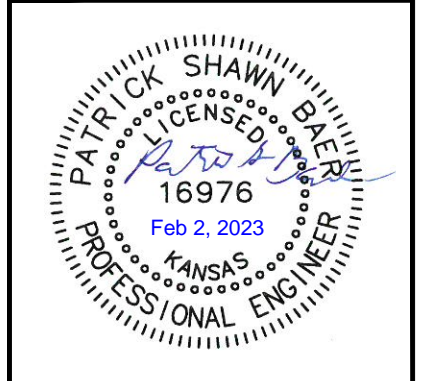


Wichita Project #472-2022-085727, Org Code #43812121, Munis #C2006		
	Quantity	Unit
Paving Items		
Concrete Pavement 8"	3443	sy
Crushed Rock Base 8", Reinforced	4010	sy
Concrete C & G, Type 1 (6" & 1-1/2")	1462	lf
Excavation, Borrow (Contractor Furnished)	361	cy
Excavation	656	cy
Fill, Compacted (90% Density)	981	cy
Fill, Compacted (95% Density)	36	cy
Inlet Hookup	4	ea
BMP - Back of Curb Protection	1262	lf
BMP - Construction Entrance	1	ea
Maintain Existing BMPs	1	LS
Signing	1	LS
Seeding	1	LS
Seeding, Temporary	1	LS
Site Clearing	1	LS
Site Restoration	1	LS
Pavement Markings	1	LS
Drainage Items		
Grading, Easement	1	LS
Pipe, SWS 24"	150	lf
Pipe, SWS 30"	400	lf
Pipe, SWS 36"	488	lf
Pipe, End Section 24"	1	ea
Pipe, End Section 36"	1	ea
Inlet, Curb (Type 1A) (L=10' W=3')	2	ea
Inlet, Curb (Type 1A) (L=10' W=4')	1	ea
Inlet, Curb (Type 1A) (L=10' W=5')	1	ea
Inlet, Backyard (5')	1	ea
MH, Standard SWS (6')	2	ea
Fill, Sand (Flushed & Vibrated)	435	lf
BMP - Curb Inlet Protection	6	ea
BMP - Drop Inlet Protection	5	ea
Testing	1	LS



Point #	Northing	Easting	Elev	Description
2	1,698,978.75	1,651,777.09	1311.27	thm
3	1,698,913.24	1,654,386.29	1311.57	mes-4m/tec
6	1,697,643.32	1,652,103.37	1305.43	thm
78	1,697,683.68	1,652,730.01	1310.85	ip-3/4
1000	1,698,927.04	1,652,404.35		Iron
1001	1,698,115.52	1,652,616.93		Iron
1002	1,697,347.67	1,652,618.00		Iron
1003	1,697,387.30	1,652,850.56		Iron
1004	1,697,476.03	1,652,902.53		Iron
1005	1,697,976.02	1,653,311.96		Iron
1006	1,697,731.97	1,653,112.28		Iron
1007	1,698,277.09	1,653,488.56		Iron
1008	1,698,435.65	1,653,570.12		Iron
1009	1,698,544.87	1,653,596.86		Iron
1010	1,698,655.38	1,653,645.18		Iron
1011	1,698,923.31	1,653,635.38		Iron
1012	1,698,935.44	1,653,493.90		Iron
1013	1,698,931.68	1,653,209.93		Iron
1014	1,698,934.55	1,653,137.17		Iron
1015	1,698,910.54	1,653,112.52		Iron
1016	1,698,833.99	1,653,113.54		Iron
1017	1,698,734.36	1,653,104.85		Iron
1018	1,698,269.08	1,653,057.81		Iron
1019	1,698,284.90	1,652,989.62		Iron
1020	1,698,206.45	1,652,948.65		Iron
1021	1,698,733.44	1,653,034.86		Iron
1022	1,698,832.80	1,653,023.54		Iron
1023	1,698,910.21	1,653,022.52		Iron
1024	1,698,934.87	1,652,997.19		Iron
1025	1,698,932.23	1,652,797.11		Iron
600	1,698,942.29	1,652,955.10	1308.86	hub

Point #	Northing	Easting	Elev	Description
4000	1,698,223.64	1,653,011.33		Sta 0+00, CTR-Cul de sac
4001	1,698,174.61	1,652,899.25		Sta -0+35.00 BC
4002	1,698,266.65	1,652,864.87		0+35.07, 35.67L, PRC
4003	1,698,250.95	1,653,053.81		0+36.05, 35.04RT, PRC
4004	1,698,287.88	1,653,047.01		0+70.21, 20.5RT, PRC
4005	1,698,297.67	1,653,007.16		0+71.62, 20.5L, PRC
4006	1,698,725.79	1,653,049.45		5+07.08, 20.5L, PRC
4007	1,698,727.60	1,653,090.43		5+08.49, 20.5RT, PRC
4008	1,698,761.58	1,653,093.00		5+42.37, 23.5RT, PT
4009	1,698,759.16	1,653,046.32		5+40.57, 23.20L, PT
4010	1,698,807.91	1,653,037.57		5+89.43, 31.30L, PC
4011	1,698,803.94	1,653,099.88		5+84.64, 30.95RT, PC
4012	1,698,838.62	1,653,102.46		6+19.28, 34.00RT, PT
4013	1,698,837.68	1,653,034.50		6+19.24, 34.00L, PT
4014	1,698,861.72	1,653,034.16		6+43.27, 34.00L, END
4015	1,698,862.67	1,653,102.16		6+43.27, 34.00RT, END
5052	1,698,836.94	1,653,685.89		Area Inlet
5053	1,698,901.95	1,653,629.20		SWS MH
5057	1,698,695.80	1,652,404.63		END SECTION
5058	1,698,709.97	1,652,456.07		BACKYARD INLET
5059	1,698,694.65	1,653,092.16		CTR IF Curb Inlet
5060	1,698,694.94	1,653,047.82		CTR IF Curb Inlet
5061	1,698,297.23	1,653,050.65		CTR IF Curb Inlet
5062	1,698,306.31	1,653,007.25		CTR IF Curb Inlet
5063	1,698,240.65	1,653,064.66		SWS MH
5064	1,698,204.87	1,653,453.01		SWS MH
5065	1,698,186.03	1,653,488.61		END SECTION
10099	1,698,940.98	1,653,731.82	1312.93	bm2
20098	1,698,944.88	1,653,091.92	1308.70	bm1



BAUGHMAN COMPANY
315 Ellis St.
Wichita, KS 67211
316-262-7271
BaughmanCo.com

CORNEJO INDUSTRIAL DISTRICT 2ND
COORDINATE PLAN & QUANTITY LIST

STREET IMPROVEMENTS
Pavement Improvements
PROJECT NUMBER:
472-2021-085727
DESIGN: PSB DRAWN: TNJ
DATE: Jan. 24, 2023
SHEET OF
31 32