

# GENERAL NOTES:

1. The Contractor shall comply with all applicable safety regulations. All construction shall be completed following current City Standard Specifications and Special Provisions.

2. Contractor will be required to provide notice to utility companies a minimum of seventy-two (72) hours prior to any excavation, as follows:

Kansas One-Call 687-2470

The Contractor must notify the following in case of an emergency:

- AT&T 1-800-246-8464
- Black Hills Energy 1-800-694-8989
- City of Wichita Water & Sewer 1-316-219-8921
- City of Wichita Stormwater 1-316-268-4090
- City of Wichita Traffic 1-316-268-4034
- Cox Communications 1-888-249-3530
- Kansas Gas Service 1-888-482-4950
- Westar Energy 1-800-544-4857

3. Utility service lines, poles, etc. are to be adjusted as necessary by others prior to construction unless the plans specifically call for their adjustment by the Contractor or unless the plans specifically identify a utility to be adjusted by its owner during construction. Existing utilities and their location, as shown on the plans, represent the best information obtainable for design. The Contractor will be required to work around existing utilities within the right-of-way which do not conflict with proposed construction.

4. Rubble from the removal of miscellaneous structures and excess excavation which is to be wasted shall be disposed of on sites to be provided by the Contractor. These sites shall be approved by the Engineer as to suitability, appearance and site location. Locations, in the opinion of the Engineer, that will leave an unsightly appearance will not be approved. All disposal sites must be approved by the Kansas Department of Health and Environment. Material either stockpiled or disposed of in a flood plain will require a Kansas State Board of Agriculture permit. Any material dumped in waters of the United States or wetlands is subject to U.S. Corps. of Engineers permitting regulations. Any material buried or stockpiled beyond approved construction limits will require additional archaeological investigations unless buried in a previously approved borrow location.

5. Trees and shrubs in public right-of-way which are in direct conflict with proposed new construction shall be removed by the Contractor with the City Engineer's approval. Trees and shrubs which are not in direct conflict with proposed new construction shall be saved and protected from damage.

6. The Contractor shall give all property owners and/or tenants of developed property abutting the construction of this project a minimum of ten (10) days notice prior to start of construction.

7. The Contractor shall be responsible for preserving property irons. The Contractor will be required to re-establish any property irons which are damaged or destroyed by his construction operations. Such irons shall be re-established by a licensed land surveyor in accordance with state laws.

8. The Engineering Division shall field locate water valves one time during construction when requested by the Contractor. It shall be the Contractor's responsibility to preserve such field locations during the construction process. Water valves, valve boxes or fire hydrants damaged during construction shall be repaired by Contractor at his own expense. Valve boxes and water meters within the project limits shall be adjusted to match final grades by the contractor.

9. The Contractor shall notify the inspecting engineer and Dawnita Reinhardt at 316-650-0740 with the City of Wichita with the anticipated construction start date and notify them of project completion. Staking and inspection for this project will be the responsibility of the Contractor.

10. If traffic will be impacted by construction, a traffic control plan must be submitted and approved by the City Traffic Engineer, Mike Armour at [traffic@wichita.gov](mailto:traffic@wichita.gov) before construction can begin. The Contractor shall be responsible for all traffic control measures to facilitate construction. All construction zone markings and signage shall conform to the latest version of the Manual on Uniform Traffic Control Devices (MUTCD) as published by the US Dept. of Transportation, Federal Highway Administration. All costs associated with construction markings and signage shall be the Contractors responsibility.

11. All elevations shown are NAVD 88.

12. All areas disturbed during construction that will not be under proposed pavement shall be restored to match existing conditions.

13. Any sidewalk, drive approach, curb, or street pavement removed to construct project must have a pavement cut permit and be replaced by the City contractor. Permits can be obtained by calling 316-268-4501 or 316-268-4480.

14. All applicable fees (top, equity, in lieu of & main benefit) must be paid before any connections can be made on this project. Quotes can be obtained on fees by calling 316-268-4555.

15. City Maintenance of sanitary sewer mains ends at last structure within the easement or right-of-way.

16. All stubs and capped pipes shall be located with green plastic tape in the same manner as risers.

17. Connecting to Existing Manholes: Prior to laying sewer lines using existing stubs in existing manholes, the Contractor shall expose and verify the elevation, grade and alignment of existing stubs and notify the Engineer of any deviation from the plans. Where the stub is unusable due to elevation grade or alignment, the Contractor shall remove the stub and plug the hole, and reshape the existing manhole invert to provide smooth flow. Where connecting to an existing manhole that does not have an existing stub, the Contractor shall core cut into existing manhole wall to make connection using approved water stop gasket, and reshape the existing manhole invert to provide smooth flow. The cost to connecting to existing manholes is incidental to the project.

18. Contractor shall limit the extent of trench open overnight and weekends to less than 50 feet.

19. Contractor shall provide positive drainage away from all manhole covers.

20. The Contractor shall prevent any construction debris from entering the existing sanitary sewer during construction.

21. The Contractor shall be responsible for maintaining continuous flow of sewage through construction. Contractors proposed method for maintaining sewage flow shall be submitted and approved by the Sewer Maintenance Division (316-268-4073) prior to starting and by-passing of sewage flows.

22. Any over excavation from manhole and pipe removal shall be backfilled with AB-3 compacted to 90-95% ASTM D698.

23. The Contractor shall protect from damage and support existing utilities through construction as approved by the utility owner and the Engineer at the contractors expense.

**D. Reinhardt - City of Wichita, Inspector**  
Release Date: 2/22/2023  
: apr 3/2/2023

# Sanitary Sewer to serve

## Stoney Pointe Apartments Phase II - B 2925 N Boulder Dr. CITY OF WICHITA, KANSAS

Gary Janzen, P.E. City Engineer

Project Number  
PPS - 2021 - 025071  
Org Code: 53030982

### AS BUILTS

Contractor:  
McCullough  
Excavation

Project Inspector:

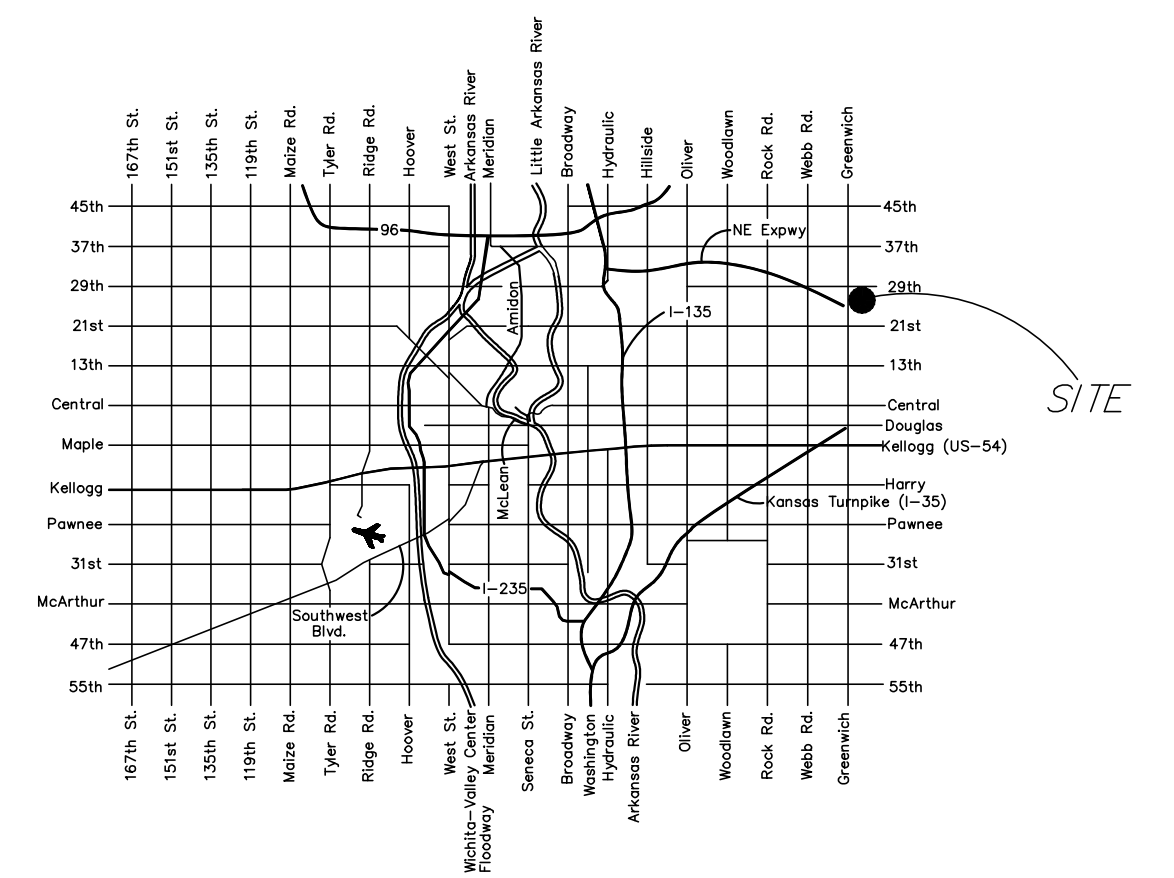
Eric Miner

**KEMILLER**  
ENGINEERING PA

117 E. Lewis, Wichita, KS 67202 (316)264-0242

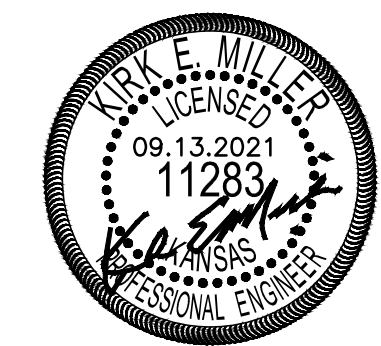


### Vicinity Map



### Sheet Index

- 1.0 Cover Sheet
- 2.1 Precast SS MH Detail
- 2.2 MH Frame and Cover
- 3.0 Plan and Profile Sheet
- 4.0 Erosion Control Plan
- 4.1-4.4 Erosion Control BMP Details (attached or available on City's website)
- 5.0 Plat



THIS SHEET HAS BEEN  
SIGNED, SEALED AND  
DATED DIGITALLY

APPROVED AS NOTED  
BY WICHITA PUBLIC WORKS  
ENGINEERING DIVISION

Engineering approved by Ben Ferguson on this day  
the 13th of September, 2021

Utilities approved by Deb Ary on this day  
the 13th of September, 2021

#### NOTE TO CONTRACTORS

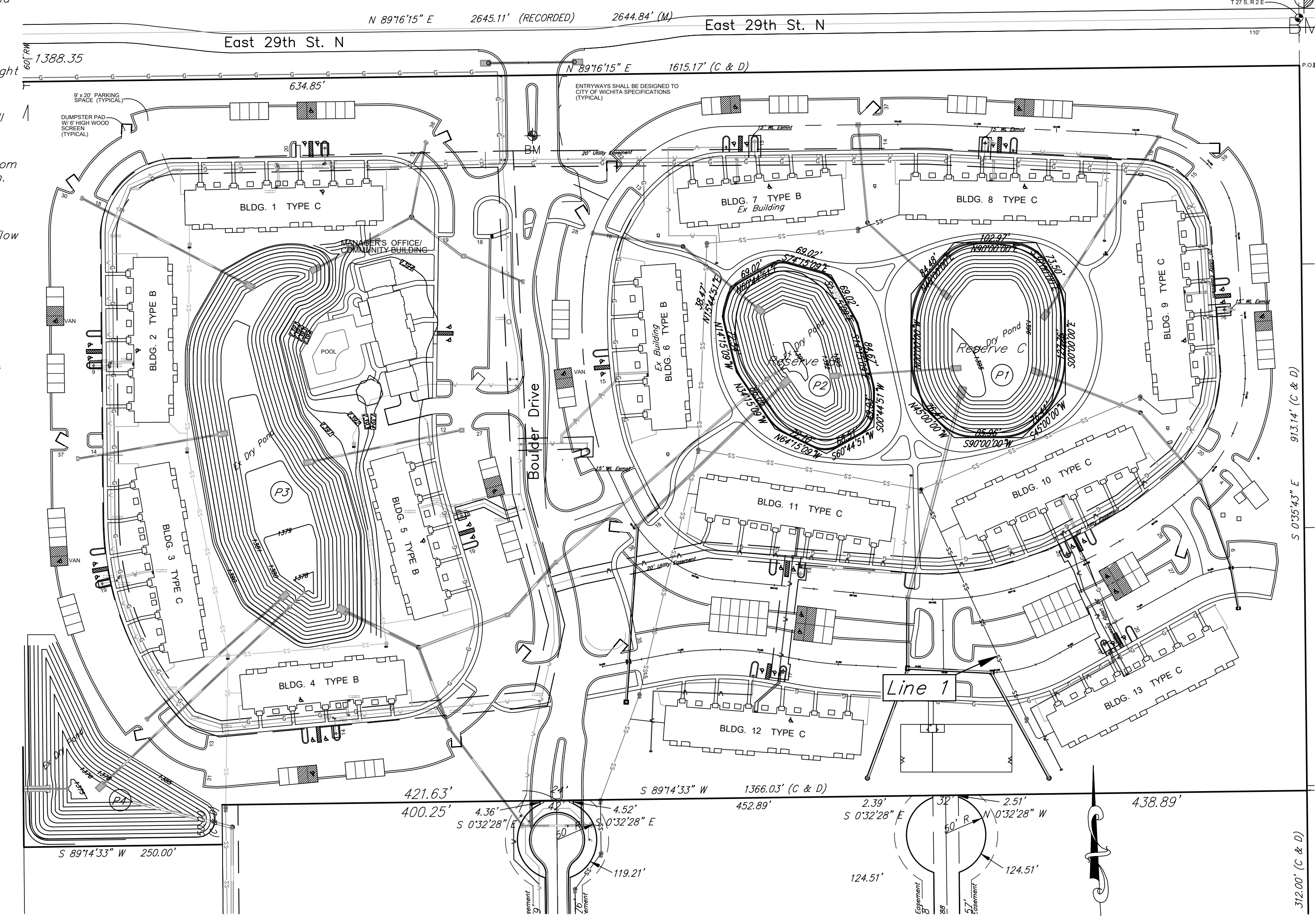
Inspection and testing for this project is to be provided by a Licensed Consulting Engineering Firm under contract with the Owner/Developer. Said inspection to be in accordance with the City of Wichita standard construction engineering practices and certified by a Licensed Professional Engineer in the state of Kansas. No work shall be performed by the Contractor without such inspection nor shall any work be commenced without written authorization by City Engineering. All Construction and Materials shall comply with the current City of Wichita Specifications and Standards and Special Provisions. (on file and available at [Wichita.gov](http://Wichita.gov)).

An approved copy of these plans signed by City staff are required on-site.

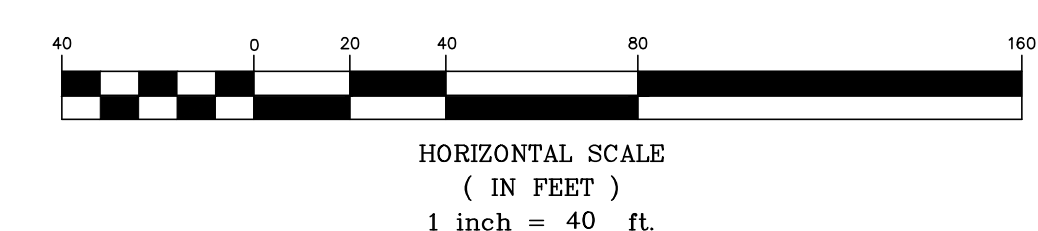
### Benchmark

Benchmark #1:  
Cross Cut on side side of Median,  
approx. 120 Ft South of 29th St. and  
Boulder Drive intersection  
Elevation = 1399.42 NAVD88

Benchmark #2:  
"X" Cut on West end of an RCP on  
the North side of 29th Street at the  
west drive for the electric sub-station,  
approximately 6.5' East and 25.2'  
North of the Northeast Corner of the  
Northwest Quarter, Sec. 3, T27S, R2E.  
Elevation = 1406.33 NAVD 88



June, 2021



**KEMILLER**  
ENGINEERING PA  
117 E. Lewis, Wichita, KS 67202 (316)264-0242

STREET N

29th St. N

BM-X Cut-14.

NE CORNER NW 1/4 SECTION 3 T 27 S. R 2 E

110'

BM-Topst-1388.35

4 BM

5

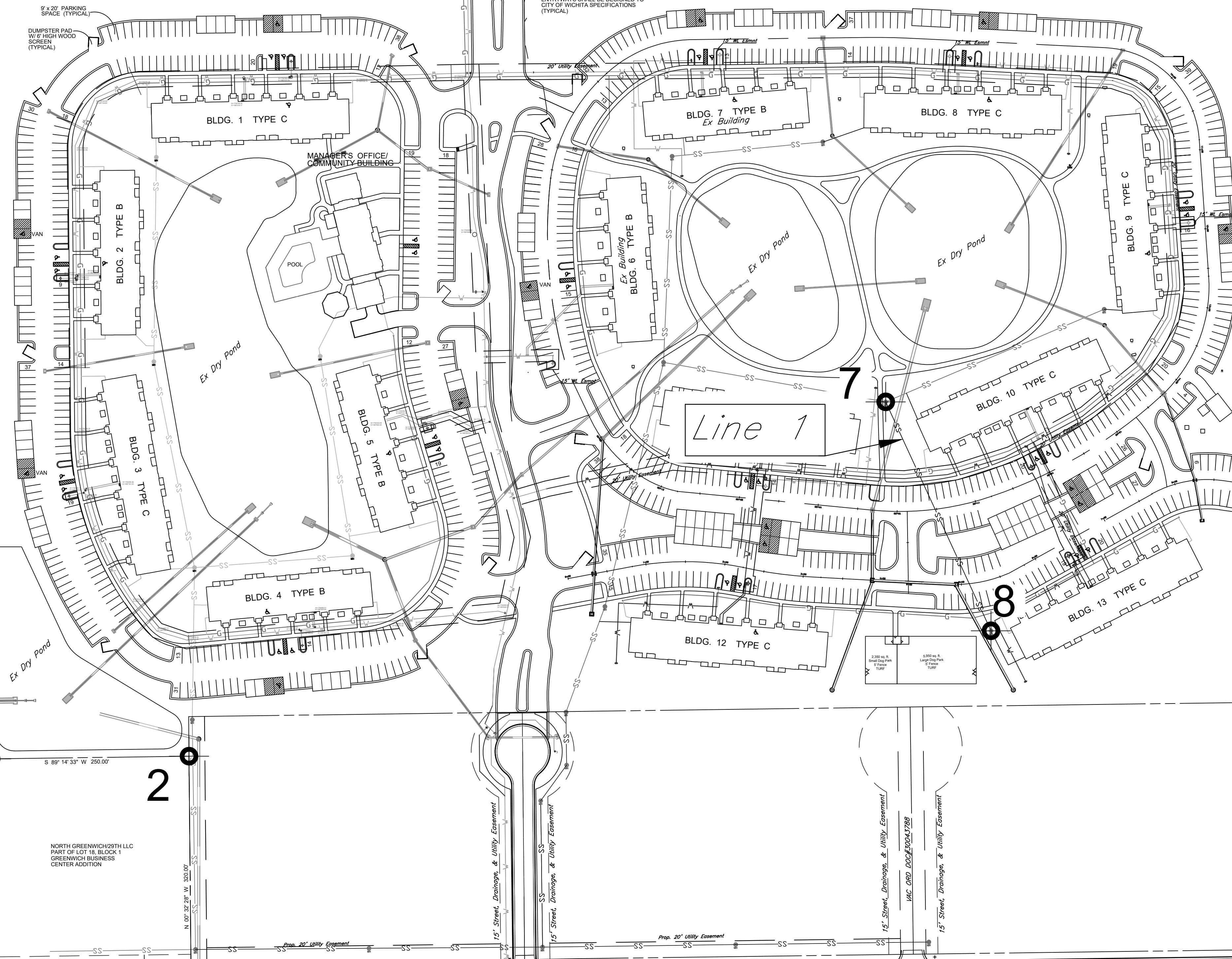
NORTH GREENWICH29TH LLC PART OF LOT 7, BLOCK 1, GREENWICH BUSINESS CENTER ADDITION

NORTH GREENWICH29TH LLC RESERVE A GREENWICH BUSINESS CENTER ADDITION

NORTH GREENWICH29TH LLC PART OF LOT 18, BLOCK 1 GREENWICH BUSINESS CENTER ADDITION

BARDBILL, INC. 3150 N. GREENWICH RD. E1/2, S/2, SW1/4 of Sec 34-26-2E

ENTRYWAYS SHALL BE DESIGNED TO CITY OF WICHITA SPECIFICATIONS (TYPICAL)



Control Points

Point #	Northing	Easting	Description
1	1703590.09	1687251.62	5/8" Re-Bar
2	1703910.07	1687248.60	5/8" Re-Bar
3	1703906.77	1686998.62	5/8" Re-Bar
4	1704870.49	1686989.51	5/8" Re-Bar
5	1704891.05	1688604.55	5/8" Re-Bar
6	1703608.16	1688617.88	5/8" Re-Bar
7	1704357.14	1688128.11	Sta. 0+00.00 Line 1 Prop. MH
8	1704068.19	1688261.07	Sta. 3+18.05 Line 1 Prop. MH

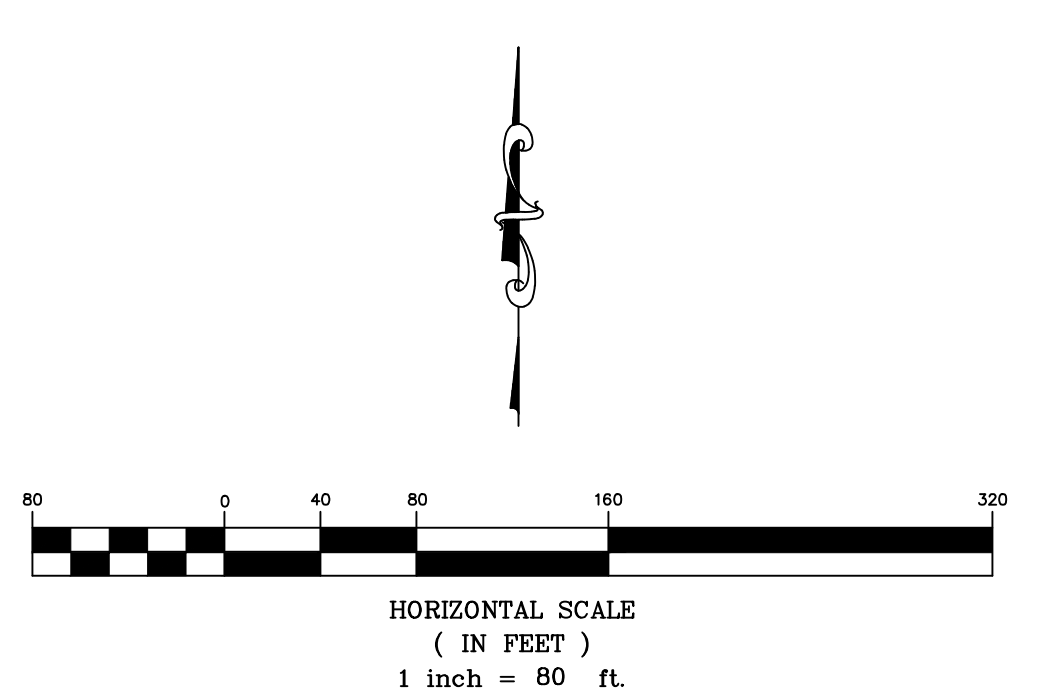
AS BUILTS



**KEMILLER**  
ENGINEERING PA

117 E. Lewis,  
Wichita, KS 67202

(316)264-0242




27th STREET

27th St.

6

Stoney Point  
Control Map  
Wichita, Kansas

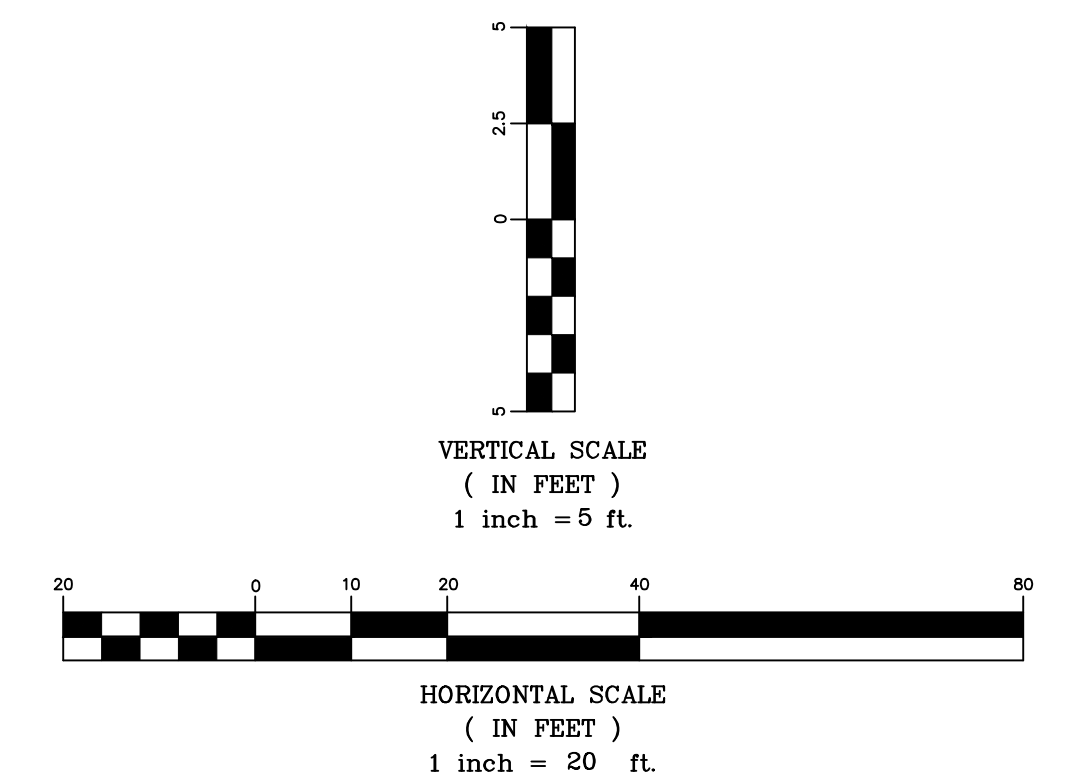
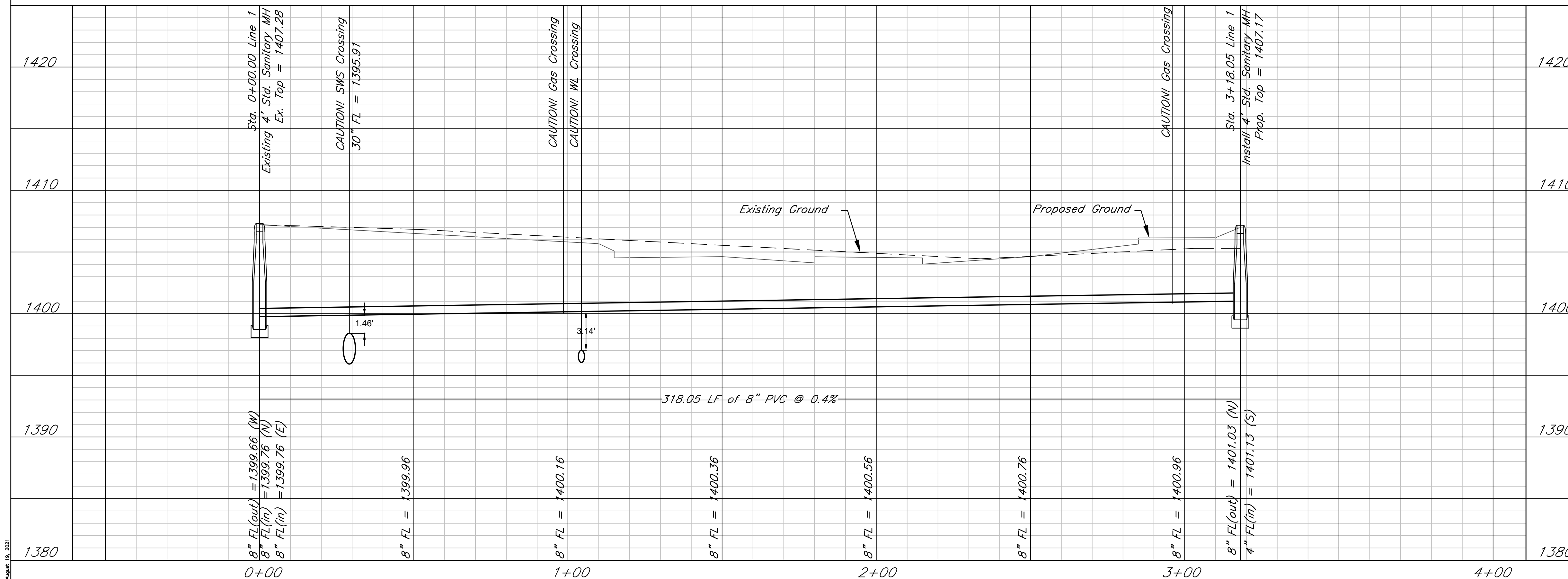
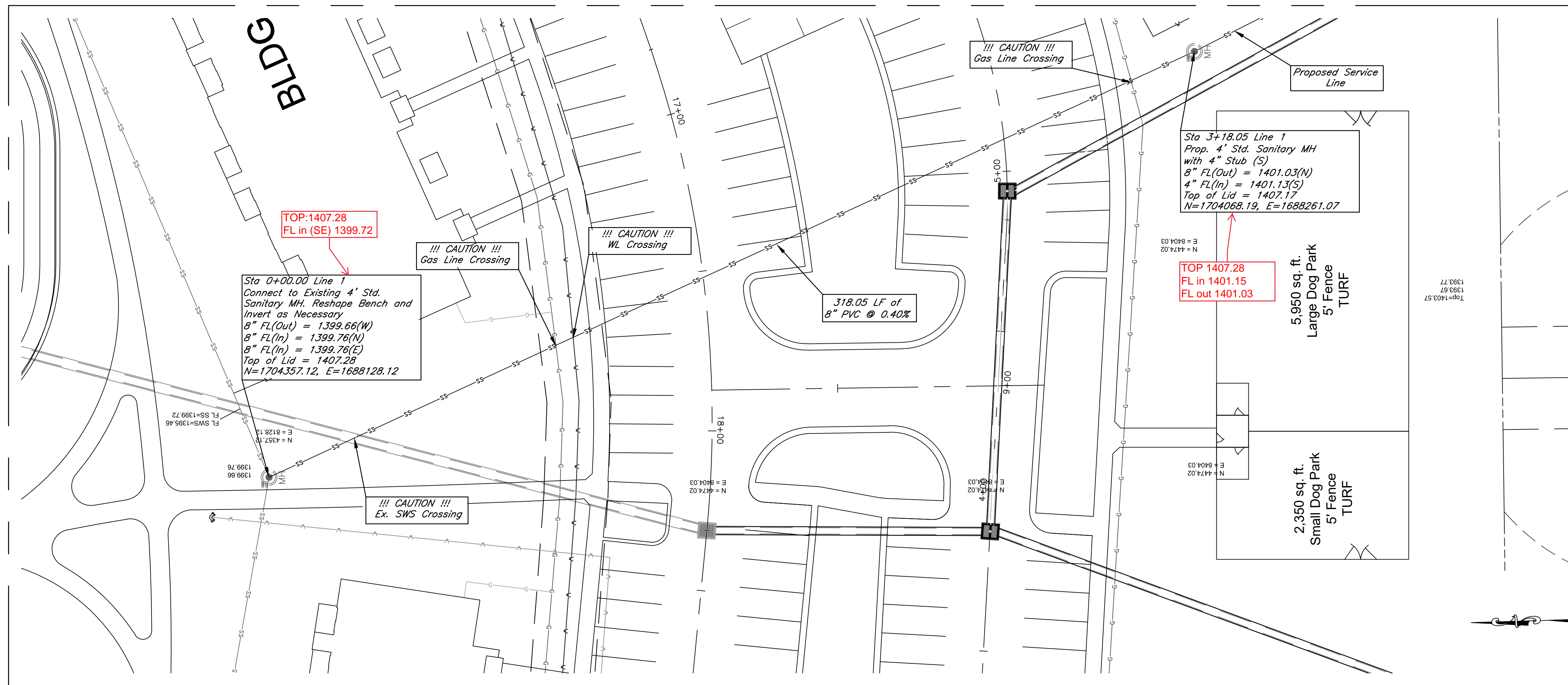
 KEMILLER ENGINEERING PA 117 E. Lewis, Wichita, KS 67202 (316)264-0242	PROJECT NUMBER PPS - 2021 -025071			SHEET <b>2.0</b>
	KEM NO. 21056	FILE SANITARY	DATE 6/2021	
DESIGN KM	DRAWN EL	REVISED 08/2021		

# AS BUILTS

**KEMILLER**  
ENGINEERING PA

117 E. Lewis,  
Wichita, KS 67202

(316)264-0242



## Stoney Pointe Apartments - Phase II B Plan and Profile - Line 1 Wichita, Kansas

**KEMILLER** ENGINEERING PA  
117 E. Lewis, Wichita, KS 67202 (316)264-0242

PROJECT NUMBER  
PPS - 2021 - 025071

KEM NO. 21056	FILE SANITARY	DATE 06/2021	SHEET <b>3.0</b>
DESIGN KM	DRAWN AM	REVISED 08/2021	