

GENERAL NOTES:

1. Contractor will be required to provide notice to utility companies a minimum of twenty-four (24) hours prior to any excavation, as follows:

Kansas One-Call 687-2470

The Contractor must notify the following in case of an emergency:

Cox Communications 262-4270
 Kansas Gas Service 1-888-482-4950
 Westar Energy 383-8650
 Aquila Energy 1-800-303-0357
 SBC 268-2245
 City of Wichita Water Dept. 268-4563
 City of Wichita Sewer Maint. 268-4024
 City of Wichita Storm Sewer Maint. 268-4034
 City of Wichita Traffic Maint. 268-4034
 Conoco Pipeline Co. 1-800-231-2551
 Southern Star Pipeline Co. 529-6600
 Phillips Pipeline Co. 1-800-766-8230
 Jayhawk Pipeline Co. 1-888-542-9575

2. Underground utility service lines and overhead utility pole lines are to be adjusted as necessary by others prior to construction unless the plans specifically call for their adjustment by the Contractor or unless the plans specifically identify a utility to be adjusted by its owner during construction. Existing utilities and their location, as shown on the plans, represent the best information obtainable for design. The Contractor will be required to work around existing utilities within the right-of-way which do not conflict with proposed construction.

3. Trees and shrubs in public right-of-way which are in direct conflict with proposed new construction shall be removed by the Contractor with the Engineer's approval. Trees and shrubs which are not in direct conflict with proposed new construction shall be saved and protected from damage.

4. The Contractor shall give all property owners and/or tenants of developed property abutting the construction of this project a minimum of ten (10) days advance notice prior to start of construction.

5. The Contractor shall be responsible for preserving property irons. The Contractor will be required to re-establish any property irons which are damaged or destroyed by his construction operations. Such irons shall be re-established by a licensed land surveyor in accordance with state laws.

6. All areas disturbed during construction within Reserves and Street R/W's shall be seeded, mulched, and fertilized as follows unless otherwise noted (Permanent Seeding):

Seed: Kansas Premium Fescue Blend: 8 lbs./1000 sq. ft.
 Mulch: Prairie Hay: 2 tons/acre
 Fertilizer: 12-24-12: 850 lbs./acre

All other areas disturbed during construction shall be seeded and mulched as follows (Temporary Seeding):

Seed: Rye Grass: 5 lbs./1000 Sq. Ft.
 Mulch: Prairie Hay: 2 tons/acre

All costs associated with seeding, mulching, and fertilizing shall be included in bid item "Project Seeding." All seeding operations shall conform to City of Wichita Standard Specifications.

7. All existing and proposed erosion control measures including silt fencing, erosion control mat, straw bales, inlet barriers, and const. entrance shall be maintained throughout construction by the contractor and until project is accepted by the City of Wichita. The on-site engineer shall complete weekly reports on the status of erosion control measures. The contractor shall be required to comply with maintenance and/or replacement of erosion control measures as determined by the on-site engineer until project is accepted by City of Wichita. Maintenance and/or replacement of erosion control measures to be paid by L.S. bid item "Erosion Control BMP's."

8. The Contractor shall grade around exposed inlets at a 1:1 slope. Inlets set lower than existing grade shall have 9" berm constructed around inlets to prevent infiltration into storm water sewer system. Cost of dirt, labor, equipment, etc. to be incidental to cost of inlet.

9. The contractor shall not start work on the project until the Project Inspector is assigned to the project and is present on the site. Any work done without inspection will be required to be uncovered for inspection.

STORM WATER SEWER
 to serve
PRAIRIE VILLA ADDITION
 CITY OF WICHITA, KANSAS
 James L. Armour, P.E. Acting City Engineer
 Private Project Number
1484 PPS (607861)

Benchmark

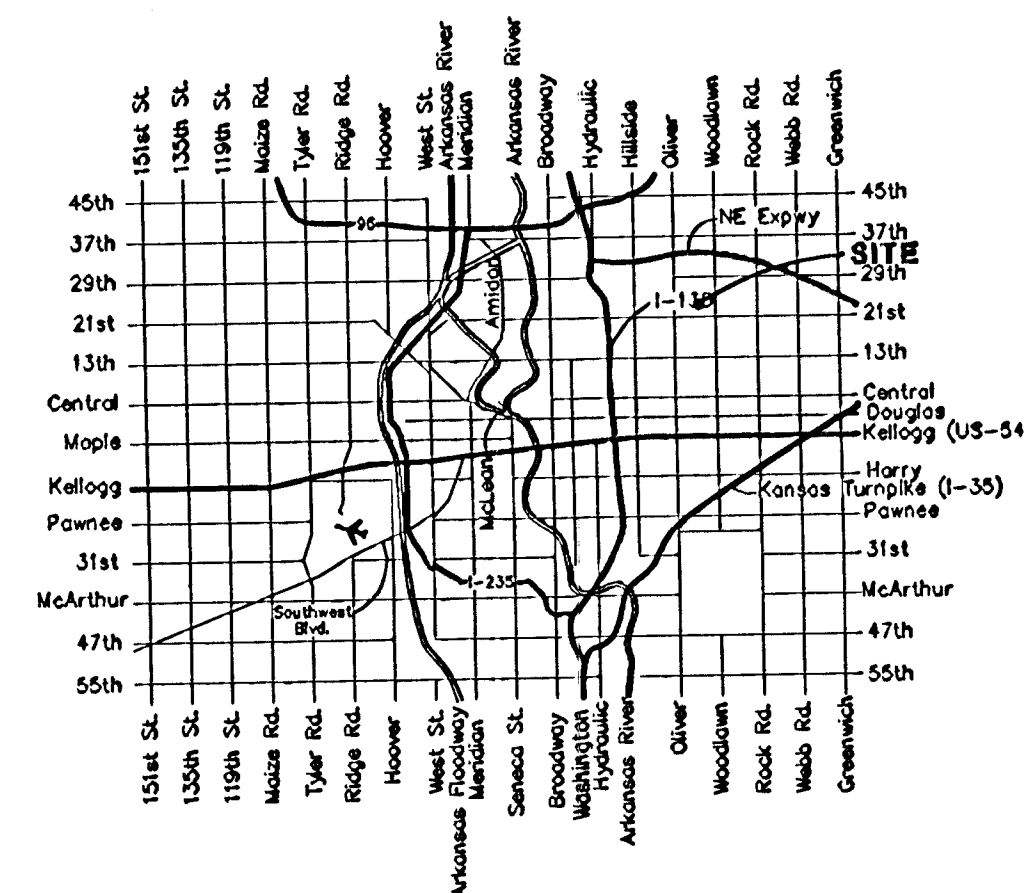
BM #1: "□" cut on back of walk at the SW corner of Woodgate 2nd Addition
 Elev. = 221.80 (City Datum)

BM #2: "X" on inlet top SW of the NW corner of Wichita Land Addition.
 Elev. = 195.45 (City Datum)

Sheet Index

Title Sheet	1
Line 1	2
Line 2	3-4
Lines 2A & 3	5
Lines 4, 5, & 6	6
Shallow Manhole Detail	7
Ring & Cover Detail	8
Std. Type 1A Double Inlet Detail	9
Special Yard Inlet Detail	10
Standard Drop Inlet Detail	11
Headwall Detail	12
Erosion Control Detail	13-16
Erosion Control Plan	17
Copy of Plat	18

Scale: 1" = 100'



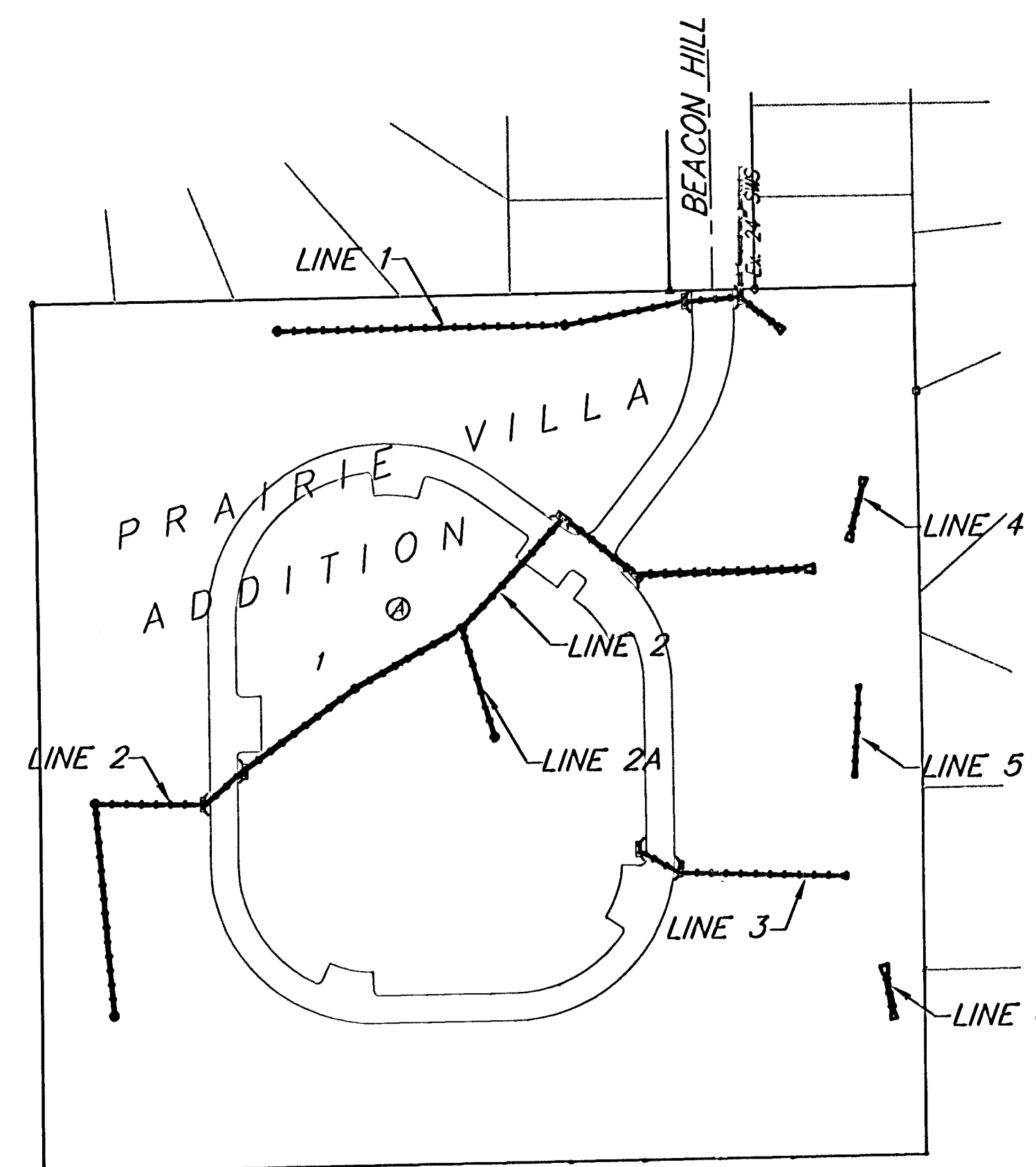
Vicinity Map

APPROVED AS NOTED
 BY CITY ENGINEER OF WICHITA

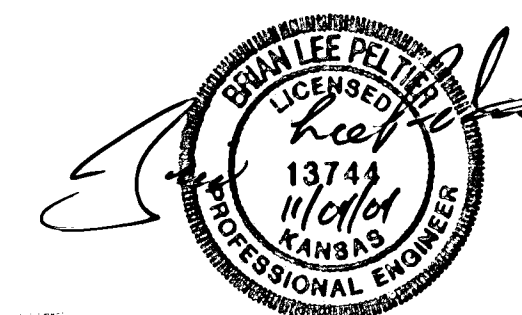
Storm Sewers URH 12/7/04

NOTE TO CONTRACTORS

Installation, inspection and testing for this project is to be provided by a Licensed Consulting Engineering Firm under contract with the Owner/Developer. Said inspection to be in accordance with the City of Wichita standard construction engineering practices and certified by a Licensed Professional Engineer. No work shall be performed in dedicated easements or public right-of-way by the Contractor without such inspection nor shall any work be commenced without written authorization by the City Engineer. All Construction and Materials shall comply with the City of Wichita Specifications and Standards (on file and available in the City Engineer's Office).



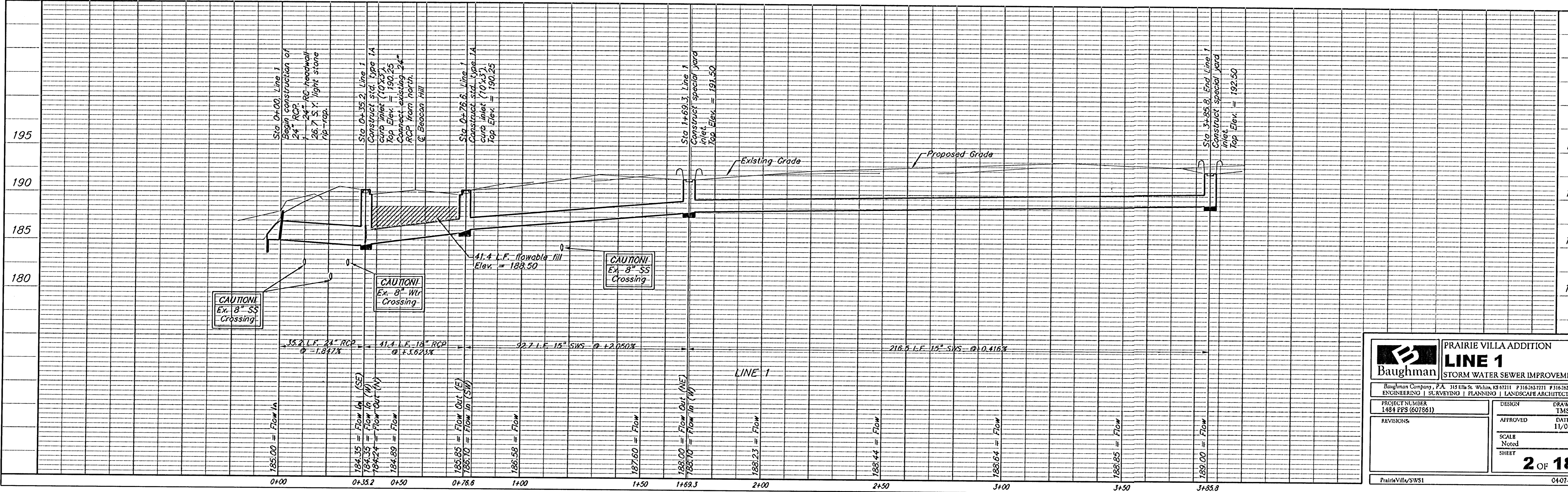
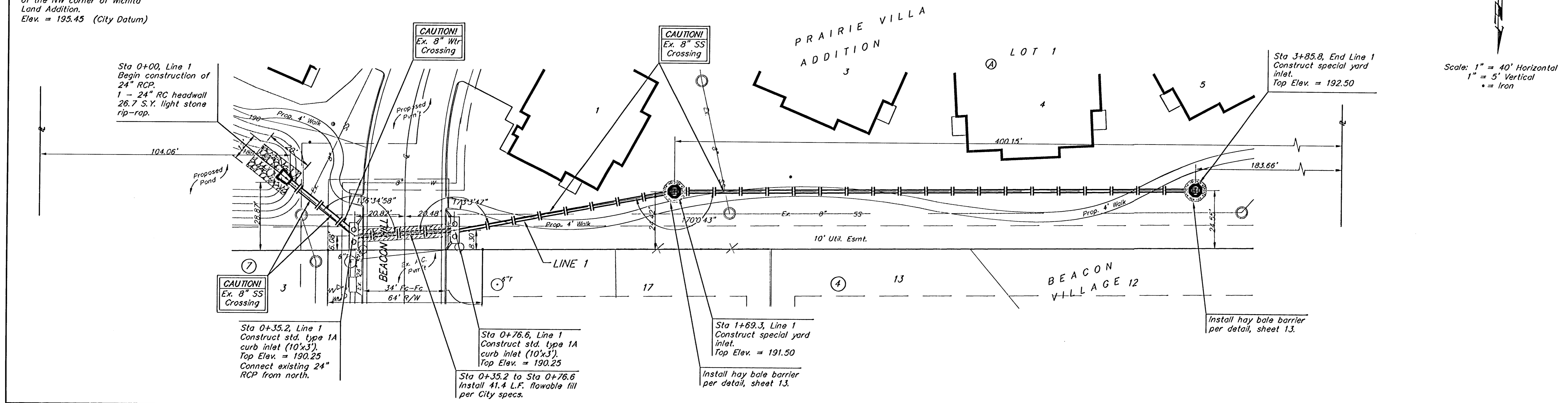
AS-BUILT
 4/14/05
 Date
 K. E. Miller
 Signature



Baughman Company, P.A. 315 Ellis St. Wichita, KS 67211 P 316-262-7271 F 316-262-0149
 ENGINEERING | SURVEYING | PLANNING | LANDSCAPE ARCHITECTURE

BENCHMARKS:
 BM #1: "□" cut on back of walk at the SW corner of Woodgate 2nd Addition
 Elev. = 221.80 (City Datum)
 BM #2: "X" on inlet top SW of the NW corner of Wichita Land Addition.
 Elev. = 195.45 (City Datum)

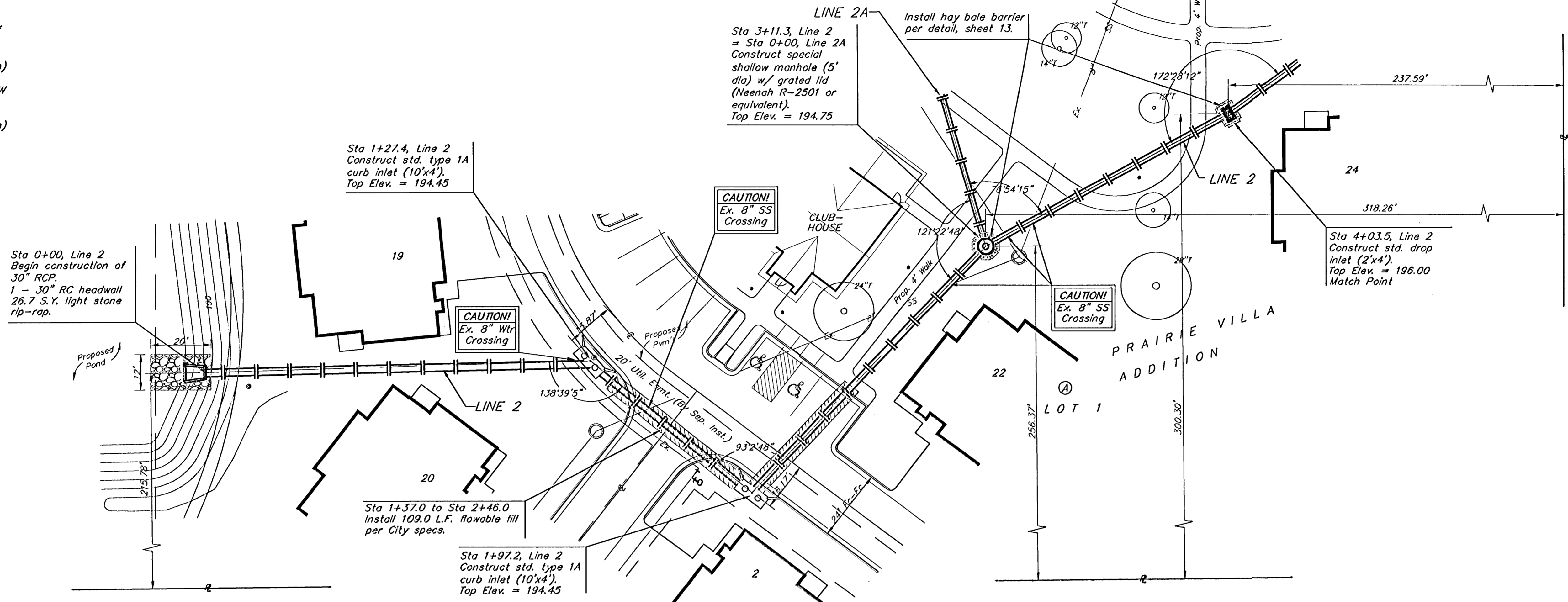
Scale: 1" = 40' Horizontal
 1" = 5' Vertical
 • = Iron



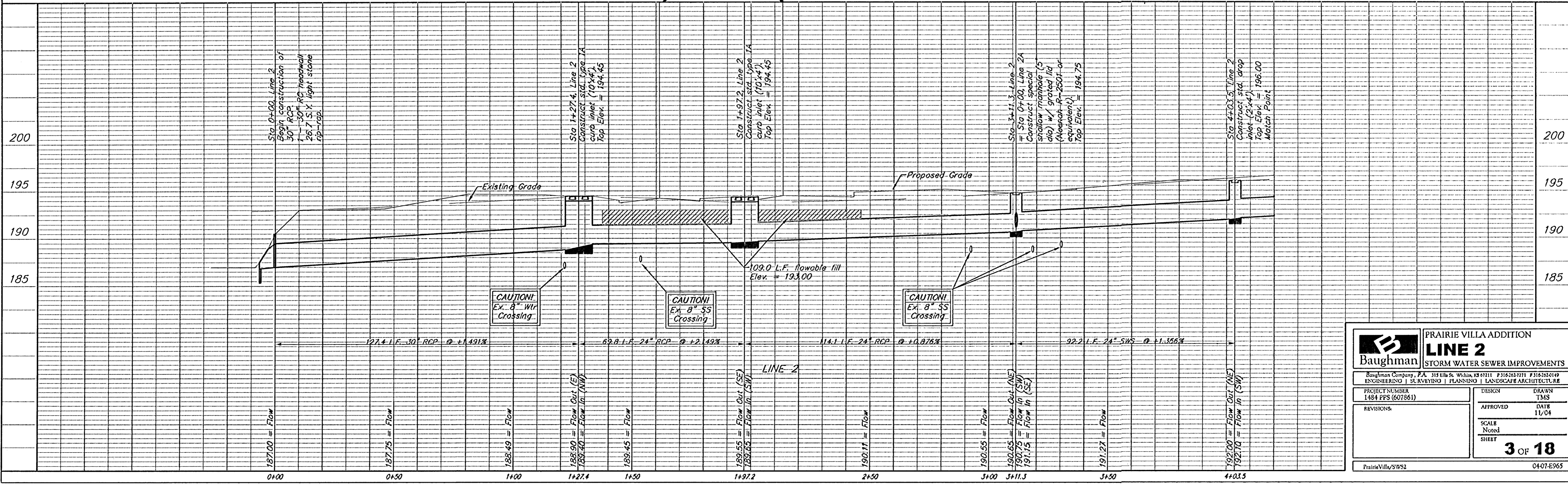
Baughman		PRAIRIE VILLA ADDITION	
		LINE 1	
		STORM WATER SEWER IMPROVEMENTS	
Baughman Company, P.A. 315 Elm St. Wichita, KS 67211 P3162627711 F3162620149			
ENGINEERING SURVEYING PLANNING LANDSCAPE ARCHITECTURE			
PROJECT NUMBER 1484 PPS (607861)	DESIGN TMS	DRAWN TMS	DATE 11/04
REVISIONS	APPROVED	SCALE Noted	SHEET
			2 OF 18
PrairieVilla/SWS1		0407-E965	

BENCHMARKS:
 BM #1: "□" cut on back of walk at the SW corner of Woodgate 2nd Addition
 Elev. = 221.80 (City Datum)

BM #2: "X" on inlet top SW of the NW corner of Wichita Land Addition.
 Elev. = 195.45 (City Datum)

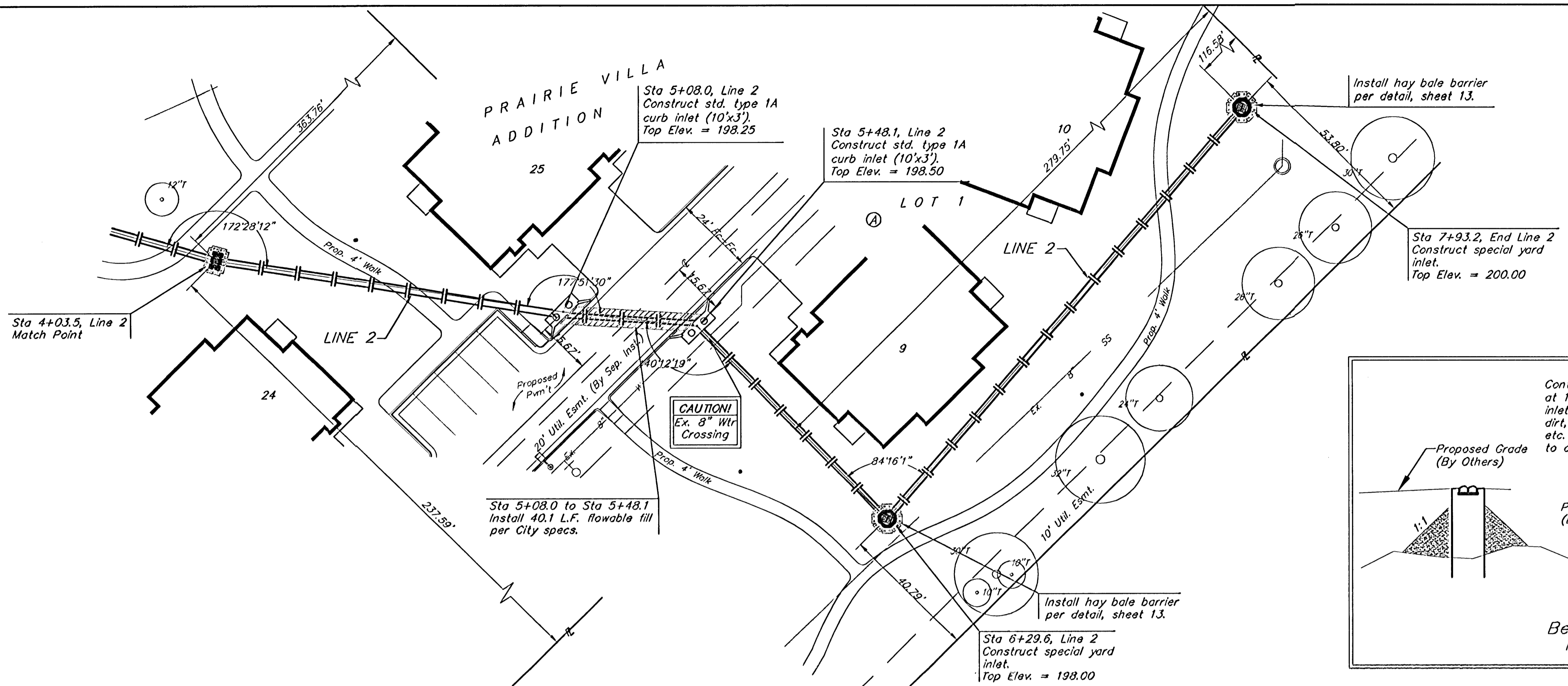


Scale: 1" = 40' Horizontal
 1" = 5' Vertical
 • = Iron

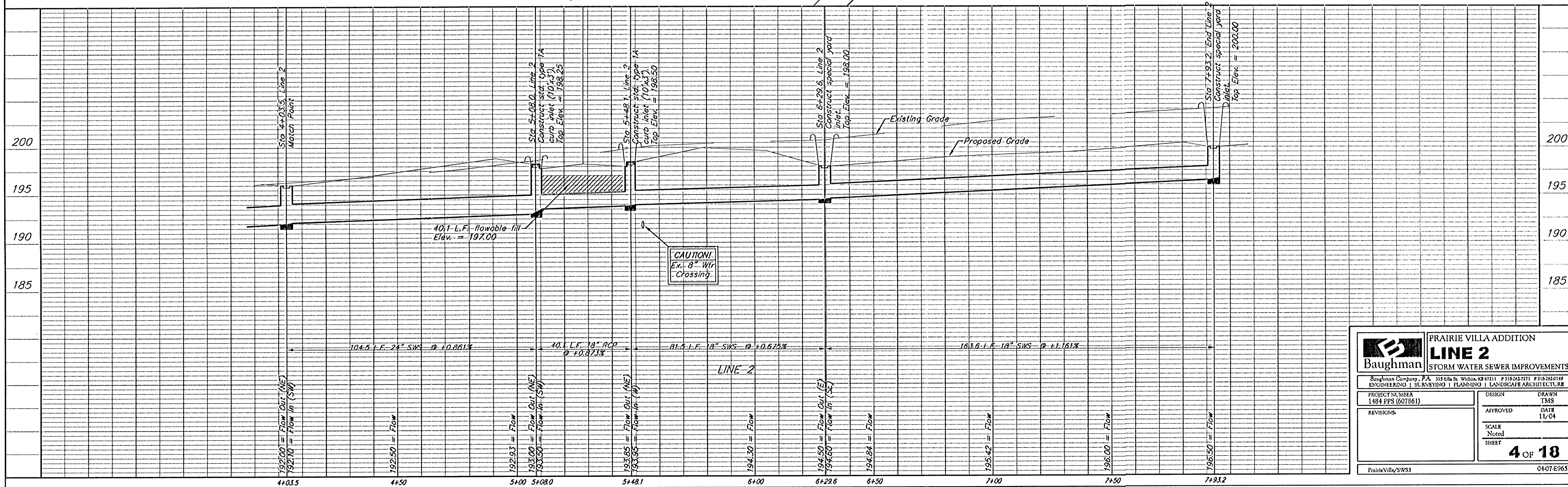
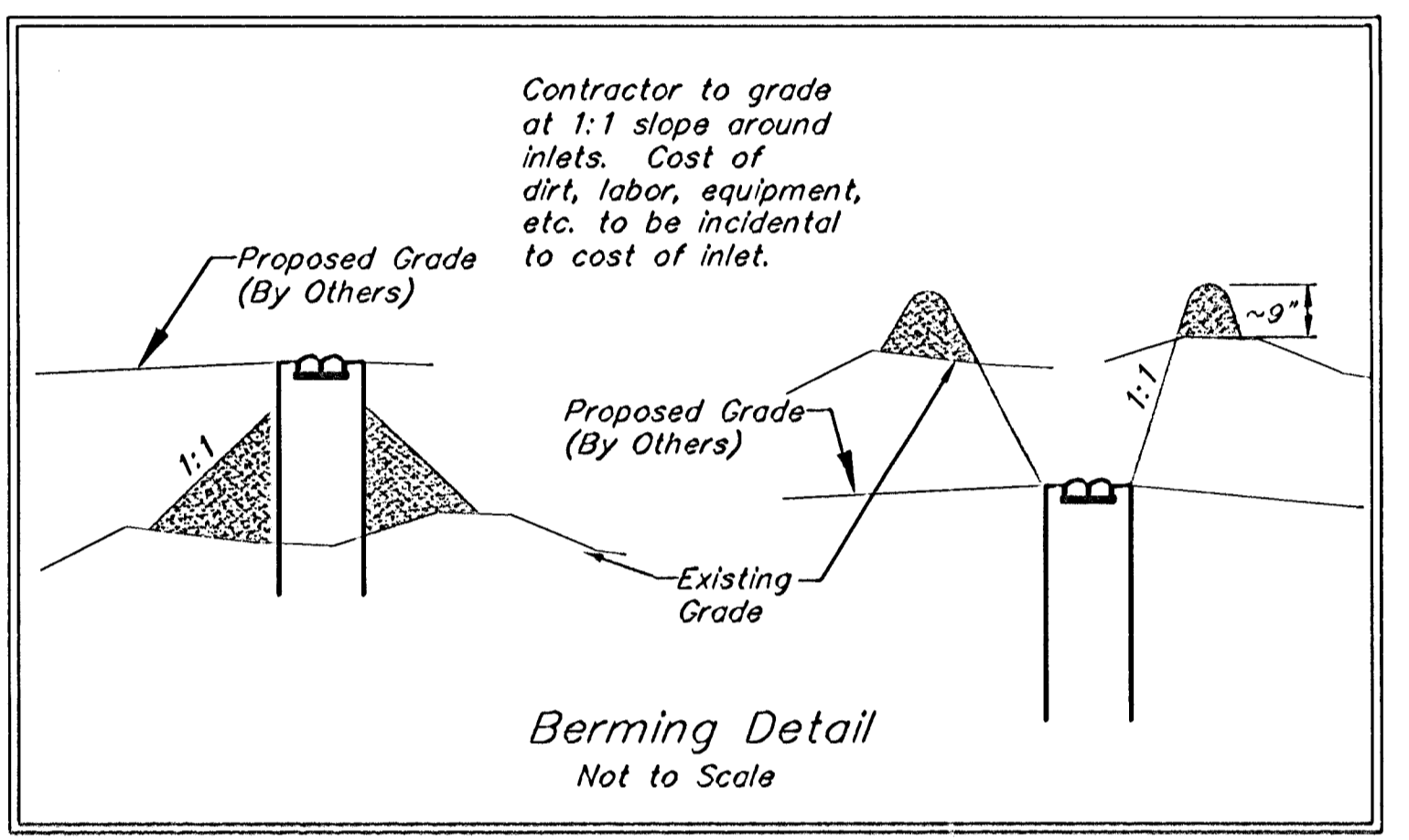


		PRAIRIE VILLA ADDITION LINE 2 STORM WATER SEWER IMPROVEMENTS	
		<small>Baughman Company, P.A. 319 Ellis St. Wichita, KS 67211 P3162637771 P3162621419 ENGINEERING SURVEYING PLANNING LANDSCAPE ARCHITECTURE</small>	
PROJECT NUMBER 1484 PPS (607861)		DESIGN DRAWN TMS	
REVISIONS:		APPROVED DATE 11/04	
		SCALE Noted SHEET	
		3 OF 18	
<small>PrairieVilla/SWS2</small>		<small>0407-E965</small>	

BENCHMARKS:
 BM #1: "□" cut on back of walk at the SW corner of Woodgate 2nd Addition
 Elev. = 221.80 (City Datum)
 BM #2: "X" on inlet top SW of the NW corner of Wichita Land Addition.
 Elev. = 195.45 (City Datum)

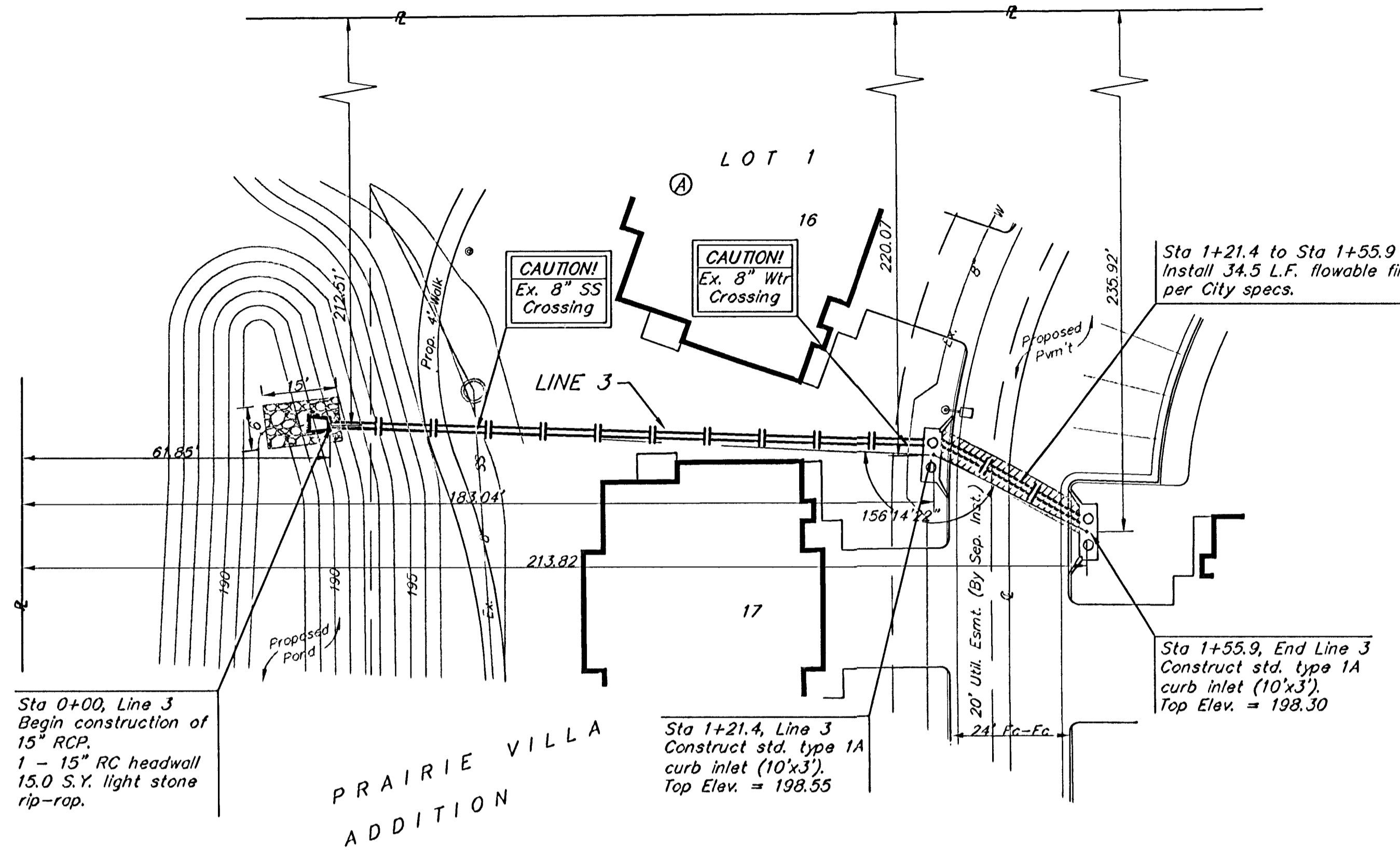
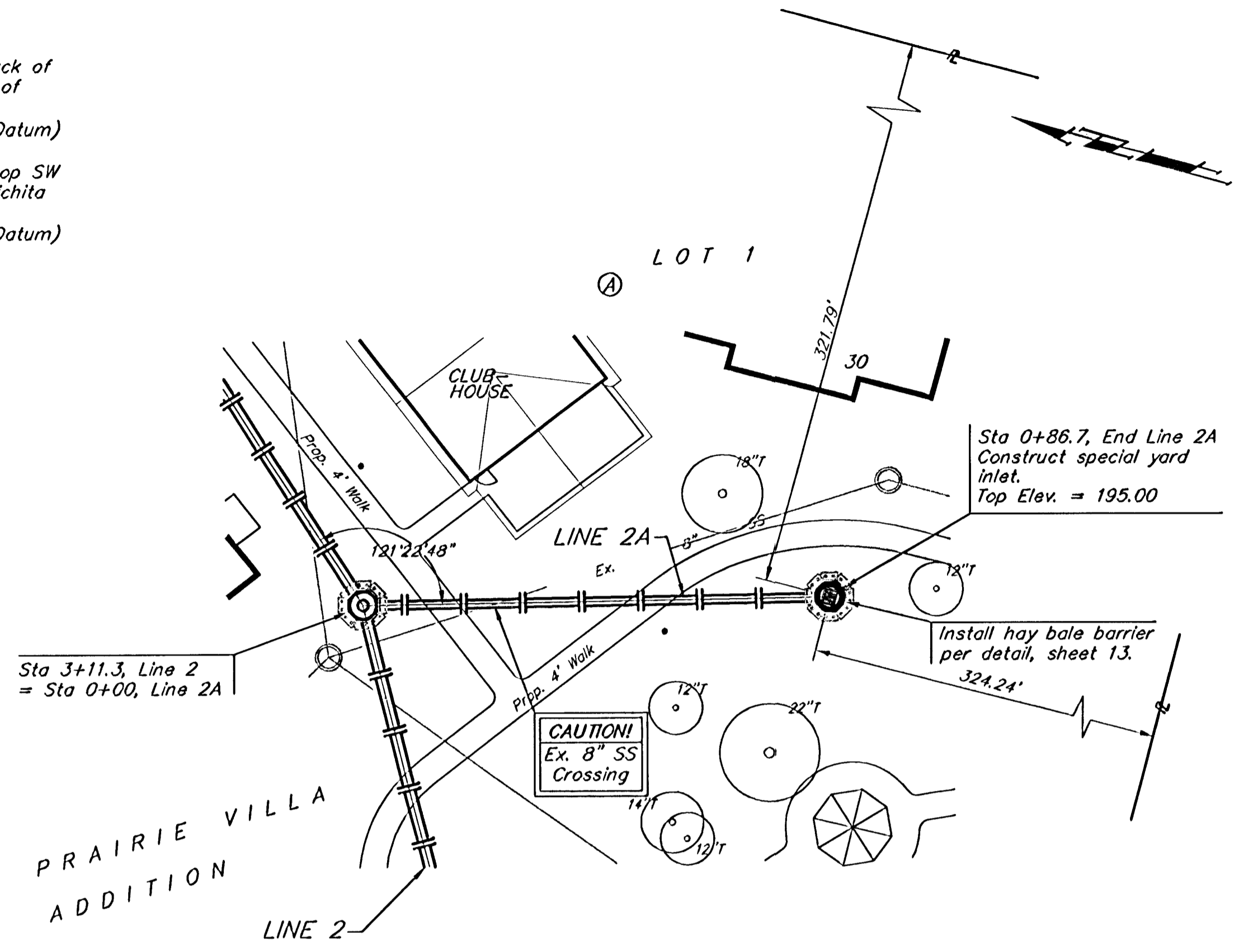


Scale: 1" = 40' Horizontal
 1" = 5' Vertical
 • = Iron

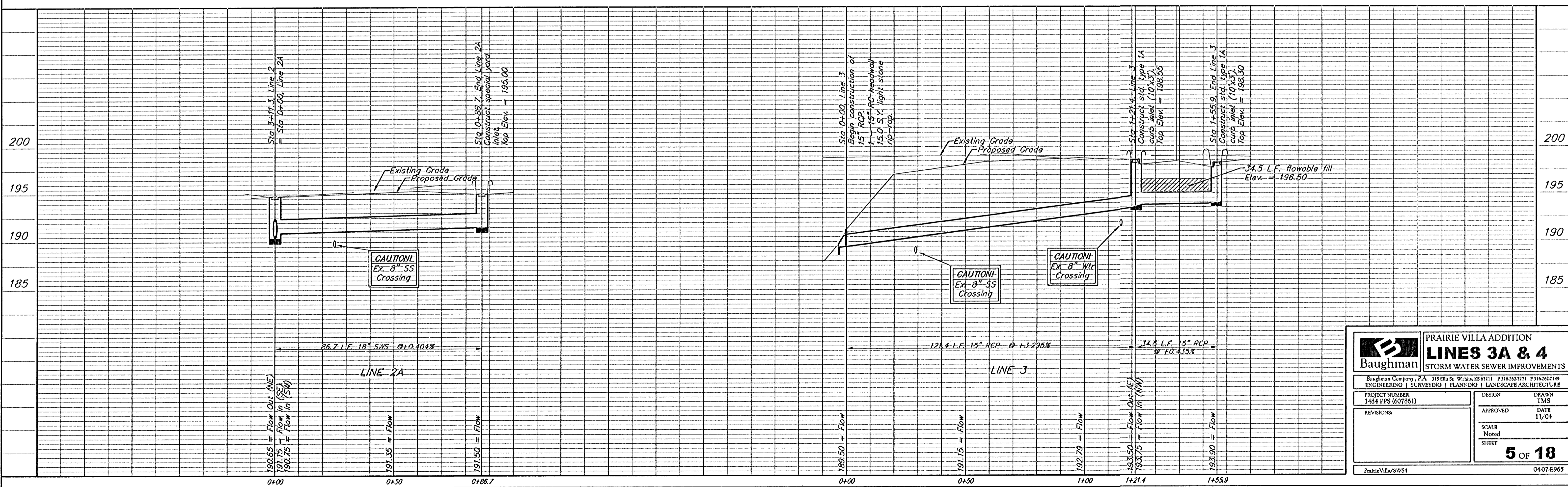


		PRAIRIE VILLA ADDITION LINE 2 STORM WATER SEWER IMPROVEMENTS	
		<small>Baughman Company, P.A. 315 Ellis St. Wichita, KS 67211 P 316-263-2711 F 316-263-0149 ENGINEERING SURVEYING PLANNING LANDSCAPE ARCHITECTURE</small>	
<small>PROJECT NUMBER 1484 PPS (607861)</small>	<small>DESIGN TMS</small>	<small>APPROVED DATE 11/04</small>	<small>DRAWN TMS</small>
<small>REVISIONS:</small>	<small>SCALE Noted SHEET</small>	4 OF 18	
<small>PrairieVilla/SWS3</small>		<small>04-07-E963</small>	

BENCHMARKS:
 BM #1: "□" cut on back of walk at the SW corner of Woodgate 2nd Addition Elev. = 221.80 (City Datum)
 BM #2: "X" on inlet top SW of the NW corner of Wichita Land Addition. Elev. = 195.45 (City Datum)



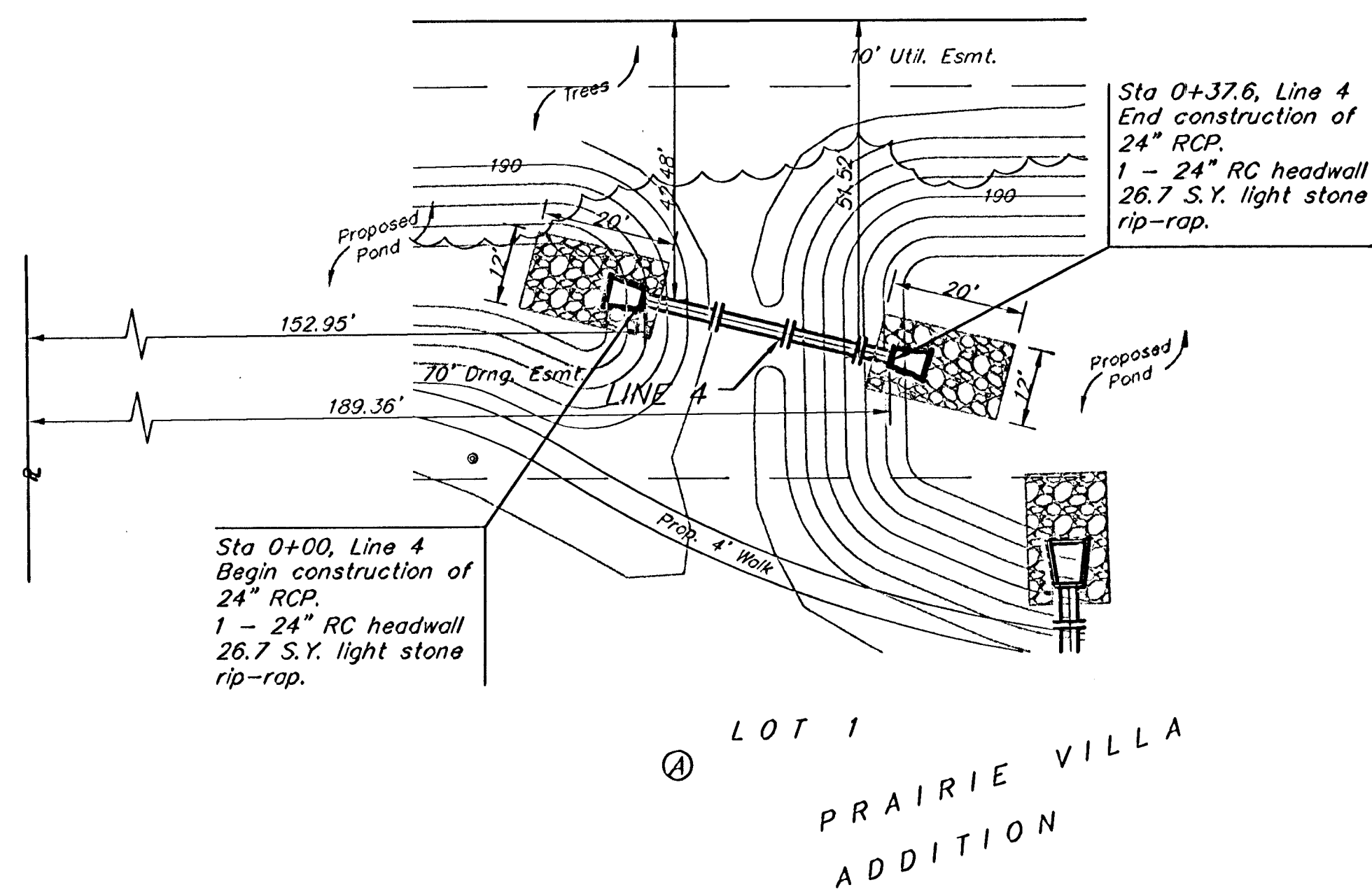
Scale: 1" = 40' Horizontal
 1" = 5' Vertical
 • = Iron



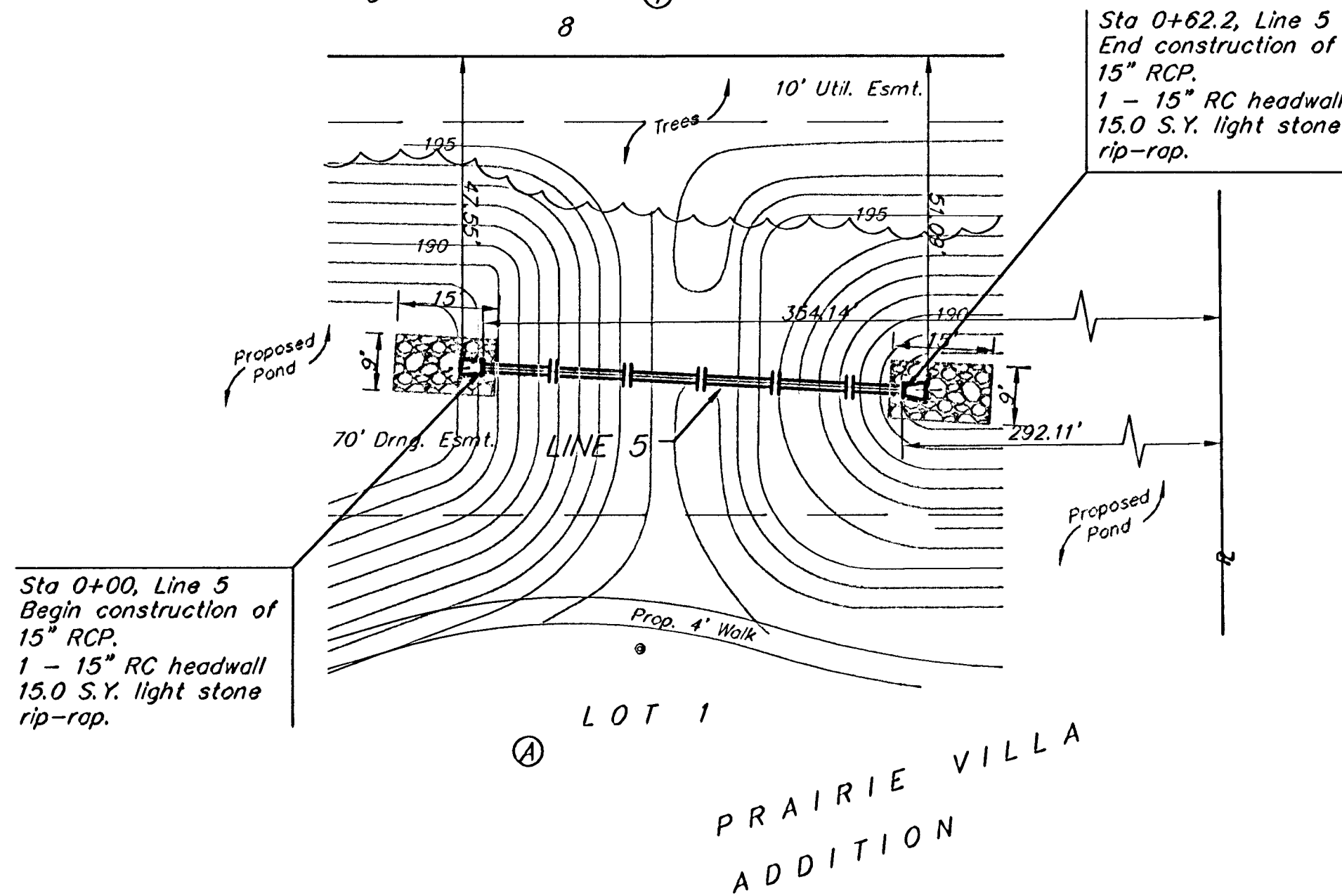
		PRAIRIE VILLA ADDITION LINES 3A & 4 STORM WATER SEWER IMPROVEMENTS	
		<small>Baughman Company, P.A. 315 Ellis St. Wichita, KS 67211 P 316-262-7771 F 316-262-0149 ENGINEERING SURVEYING PLANNING LANDSCAPE ARCHITECTURE</small>	
<small>PROJECT NUMBER 1484 PPS (607861)</small>		<small>DESIGN TMS</small>	
<small>REVISIONS:</small>		<small>APPROVED DATE 11/04</small>	
<small>SCALE Noted SHEET</small>		<small>5 OF 18</small>	
<small>PrairieVilla/SWS4</small>		<small>04-07-E965</small>	

BENCHMARKS:
 BM #1: "□" cut on back of walk at the SW corner of Woodgate 2nd Addition Elev. = 221.80 (City Datum)
 BM #2: "X" on inlet top SW of the NW corner of Wichita Land Addition. Elev. = 193.45 (City Datum)

WOODLAWN PLACE
 5TH ADDITION

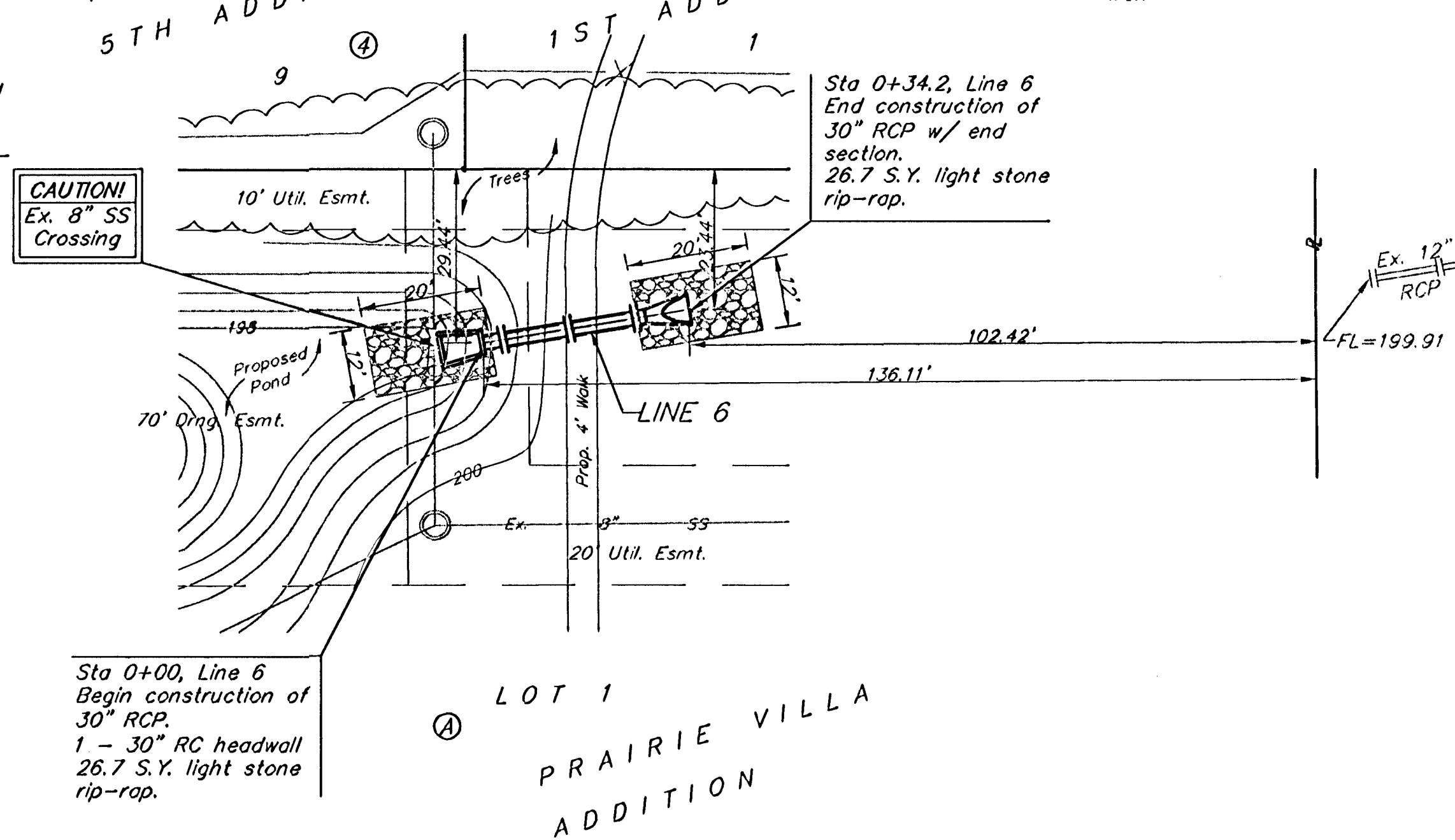


WOODLAWN PLACE
 5TH ADDITION

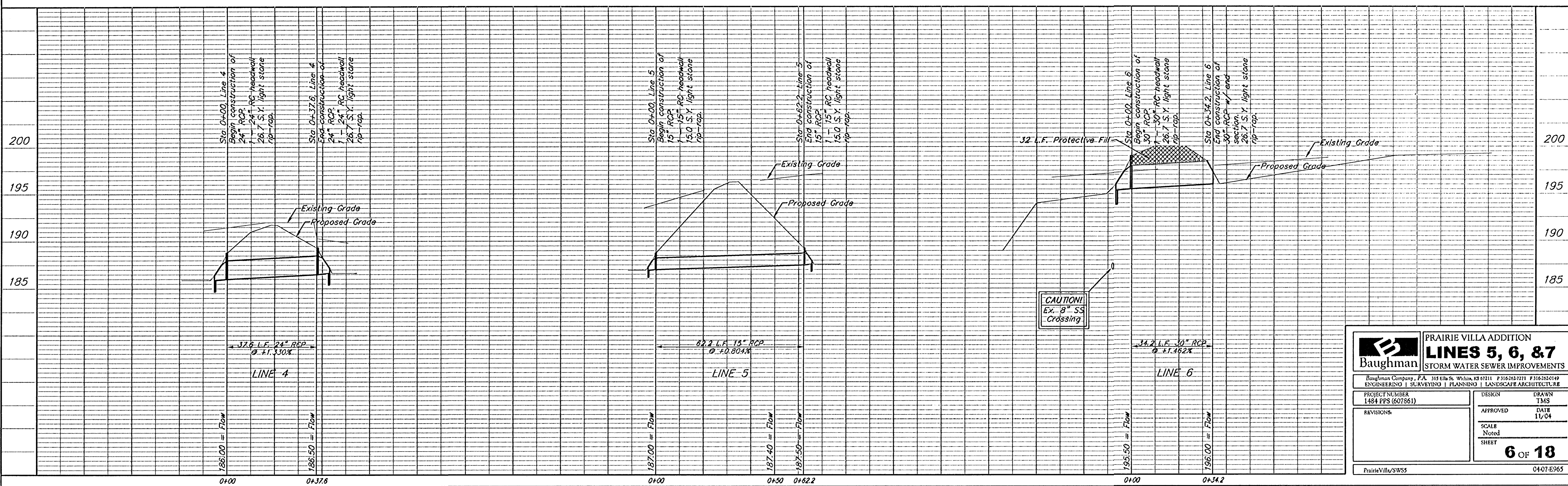


WOODLAWN PLACE
 5TH ADDITION

WILLIE COLE
 1ST ADDITION



Scale: 1" = 40' Horizontal
 1" = 5' Vertical
 * = Iron



Baughman ENGINEERING | SURVEYING | PLANNING | LANDSCAPE ARCHITECTURE

**PRAIRIE VILLA ADDITION
 LINES 5, 6, & 7
 STORM WATER SEWER IMPROVEMENTS**

PROJECT NUMBER: 1484 PPS (607861)
 DESIGNER: TMS
 DATE: 11/04

REVISIONS:

SCALE: Noted
 SHEET: **6 OF 18**

PrairieVilla/SWS5 0407-E965