

# PRIVATE STORM WATER SEWER EXTENSION

TO SERVE

## WOOLMAN HALL REPLACEMENT - FRIENDS UNIVERSITY

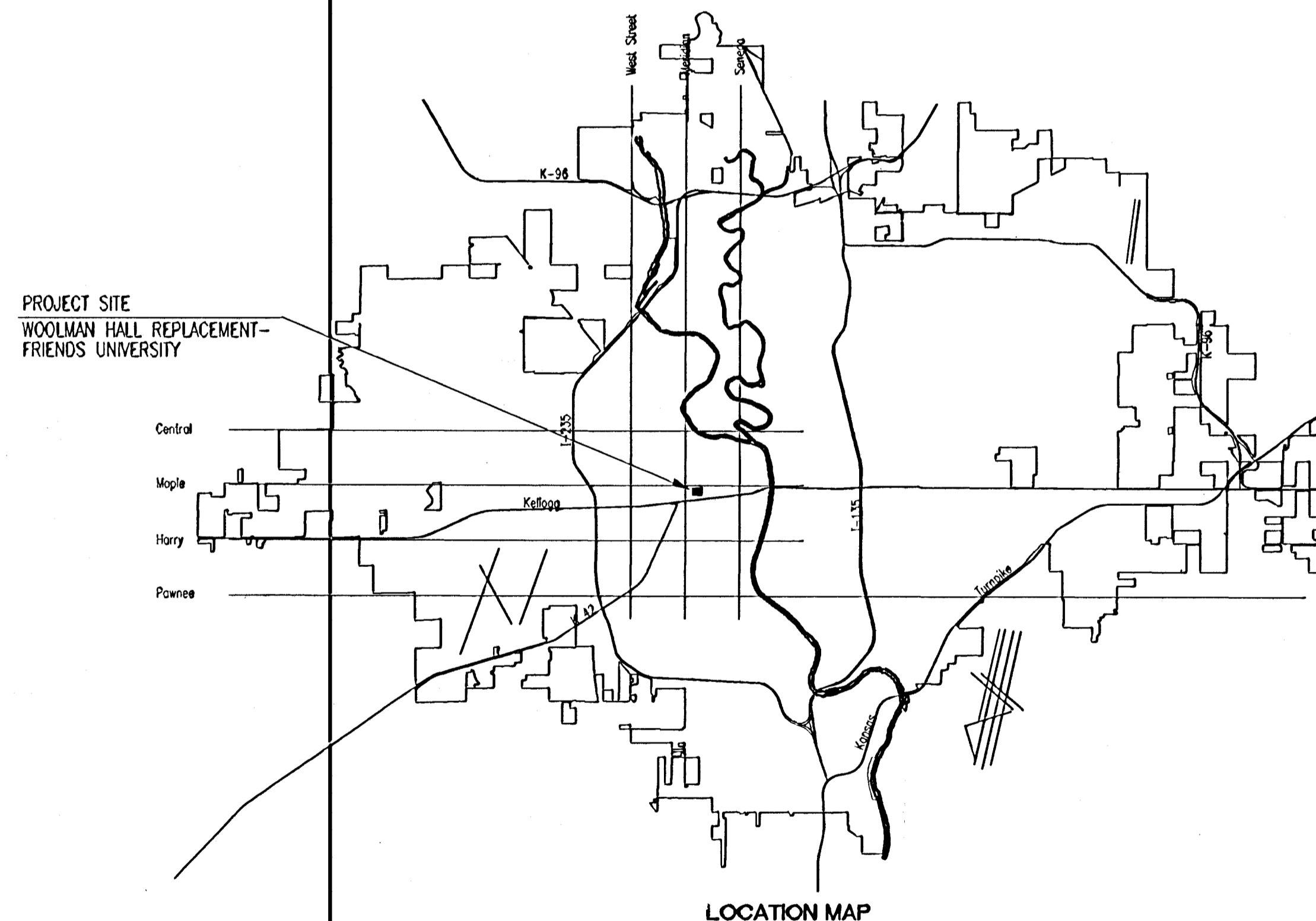
PRIVATE PROJECT NO. 1524 PPS (607861)

### CITY OF WICHITA, KANSAS

JAMES L. ARMOUR, P.E. - ACTING CITY ENGINEER

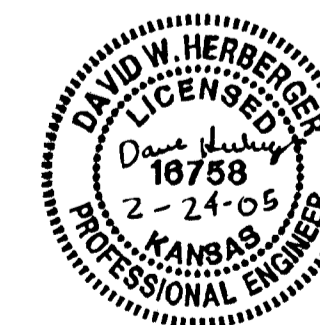
#### INDEX OF SHEETS

SHEET NO. 1	TITLE SHEET
SHEET NO. 2	KEY MAP AND GENERAL NOTES
SHEET NO. 3	SWS PLAN AND PROFILE LINE NO. 1
SHEET NO. 4	SWS PLAN AND PROFILE LINE NO. 1
SHEET NO. 5	SWS PLAN AND PROFILE LINE NO. 1A & 1B
SHEET NO. 6	SWS PLAN AND PROFILE LINE NO. 2
SHEET NO. 7	TYPE 1 CURB INLET DETAILS
SHEET NO. 8	STANDARD AREA INLET DETAILS
SHEET NO. 9	SHALLOW MANHOLES TYPE 'P' & 'C'
SHEET NO. 10	FRAME AND COVER DETAILS
SHEET NO. 11	SOIL EROSION BMP DETAILS COMMERCIAL
SHEET NO. 12	SOIL EROSION BMP DETAILS
SHEET NO. 13	SOIL EROSION BMP DETAILS
SHEET NO. 14	SOIL EROSION BMP DETAILS



## FEBRUARY 2005

PLANS PREPARED BY  
**PROFESSIONAL ENGINEERING CONSULTANTS, P.A.**  
ENGINEERS  
WICHITA, KANSAS



APPROVED AS NOTED  
By CITY ENGINEER OF WICHITA

Sanitary Sewers \_\_\_\_\_  
Storm Sewers VRH 2/25/05  
Driveway Approaches \_\_\_\_\_  
Paving \_\_\_\_\_

#### NOTE TO CONTRACTOR

INSPECTION AND TESTING FOR THIS PROJECT IS TO BE PROVIDED BY A LICENSED CONSULTING ENGINEERING FIRM CONTRACTED BY THE OWNER/DEVELOPER. SAID INSPECTION TO BE IN ACCORDANCE WITH THE CITY OF WICHITA STANDARD CONSTRUCTION ENGINEERING PRACTICES AND CERTIFIED BY A LICENSED PROFESSIONAL ENGINEER. NO WORK SHALL BE PERFORMED IN DEDICATED EASEMENTS OR PUBLIC RIGHT-OF-WAY BY THE CONTRACTOR UNTIL SUCH INSPECTION IS ARRANGED FOR AND REQUIRED BONDS HAVE BEEN SUBMITTED TO AND APPROVED BY THE CITY. NOR SHALL ANY WORK BE COMMENCED IN DEDICATED EASEMENTS OR PUBLIC RIGHT-OF-WAY WITHOUT WRITTEN AUTHORIZATION BY THE CITY ENGINEER. IMPROVEMENTS PERFORMED UNDER THIS PROJECT SHALL NOT BE ACCEPTED BY THE CITY UNTIL ALL APPLICABLE DOCUMENTATION HAS BEEN SUBMITTED TO THE CITY ENGINEER. THIS MAY INCLUDE: RECORD DRAWINGS, INSPECTION LOGS, TEST DOCUMENTATION, TV TAPES, AND A CERTIFICATE OF COMPLETION. THE ABOVE SHALL BE PERFORMED BY THE CONSULTING FIRM CONTRACTED TO INSPECT THIS PROJECT.

AS BUILT 9/2005  
REISS & GOODNESS ENGINEERS

**CONTROL POINTS**

Pt.#5- N-4,999.3972, E-5,213.3386  
Found Hill Nail in N edge of asphalt parking lot  
21.00' E,  $\odot$  N entrance to parking lot for Marriage and  
Family Therapy building

Pt.#7- N-5,055.0652, E-4,956.8850  
Set Mag Nail in  $\odot$  E end of concrete drive on N side of  
Casado Campus Center  
2.50' W, W back of curb Bonn Street  
7.50' S,  $\odot$  of University Street to the E  
10.50' N, N back of curb of University Street  
13.00' E,  $\odot$  of Bonn Street to S

Pt.#9- N-4,707.1080, E-4,939.5360  
Found Chiseled "+" on concrete sidewalk at NW corner  
of Bonn Street and Kellogg Drive  
No ties taken

Pt.#20- N-5,055.0624, E-4,488.5105  
1/2" Rebar at NW corner of new dormitory at  $\odot$  of Bonn Street  
22.61' N, Chiseled "+" on concrete light pole base  
33.52' ENE, Stamped "+" on top of curb for round planter  
47.55' SE, Chiseled "+" on concrete light pole base

Pt.#21- N-5,321.3793, E-4,596.6983  
1/2" Rebar in grass area SE of football field  
36.93' SW, Nail and shiner in E face of 36" Ash  
40.07' SE, Nail and shiner in N face of 12" Ash  
81.60' NE, SW corner brick building (Energy Center)

Pt.#22- N-5,518.0642, E-4,683.4444  
1/2" Rebar in grass area on N side of Energy Center parking lot  
6.04' N, Chiseled "+" on top of E-W concrete retaining wall  
23.98' ENE, Chiseled "+" on top of guard post  
(No distance) NW, Davis Building

Pt.#23- N-5,305.8625, E-4,793.3967  
1/2" Rebar in grass area SW of Davis Building  
26.95' N, Chiseled "+" on bottom concrete step for metal stairs  
27.12' SE, Nail and shiner in E face of 18" Walnut  
76.70' NW, SE corner of brick building (Energy Center)

**BENCH MARKS**

BM#8  
Set Chiseled "d" on concrete base of light pole at NW  
corner of University Street and Bonn Street  
Elev.=110.03

BM#10  
Set Chiseled "d" on center, S side of curb inlet at NW  
corner of Kellogg Drive and Bonn Street  
Elev.=110.55

BM#11  
Found railroad spike in power pole at SW corner of  
Hiram Street and University Street  
Elev.=111.17

BM#30  
Chiseled "d" on curb inlet on W side of brick area at  
NW corner of new dormitory SE of tennis courts  
Elev.=109.04

BM#31  
Chiseled "d" on SE corner of concrete pad for electric  
transformer of E side of football field  
Elev.=111.38

BM#32  
Chiseled "d" on concrete pad for fuel oil tank on E  
side of Energy Building W side of Davis Building  
Elev.=111.83

SCALE: 1"=50'

**GENERAL NOTES**

UNDERGROUND UTILITY SERVICE LINES AND OVERHEAD UTILITY POLE LINES ARE TO BE ADJUSTED AS NECESSARY BY OTHERS PRIOR TO CONSTRUCTION UNLESS THE PLANS SPECIFICALLY CALL FOR THEIR ADJUSTMENT BY THE CONTRACTOR. EXISTING UTILITIES AND THEIR LOCATION, AS SHOWN ON THE PLANS, REPRESENT THE BEST INFORMATION OBTAINABLE FOR DESIGN. LOCATION INFORMATION HAS BEEN OBTAINED FROM THE VARIOUS UTILITY COMPANIES AND IS EITHER FROM COMPANY RECORD DRAWINGS OR COMPANY PROVIDED FIELD LOCATIONS. THE CONTRACTOR WILL BE REQUIRED TO WORK AROUND EXISTING UTILITIES WITHIN THE RIGHT-OF-WAY WHICH DO NOT CONFLICT WITH PROPOSED CONSTRUCTION. CONTRACTOR SHALL SATISFY HIMSELF OF SUBSURFACE CONDITIONS PRIOR TO BIDDING.

TREES AND SHRUBS IN PUBLIC RIGHT-OF-WAY WHICH ARE IN DIRECT CONFLICT WITH PROPOSED NEW CONSTRUCTION SHALL BE REMOVED BY THE CONTRACTOR WITH THE ENGINEER'S APPROVAL. TREES AND SHRUBS WHICH ARE NOT IN DIRECT CONFLICT WITH PROPOSED NEW CONSTRUCTION SHALL BE SAVED AND PROTECTED FROM DAMAGE.

RUBBLE FROM THE REMOVAL OF MISCELLANEOUS STRUCTURES SHALL BE DISPOSED OFF SITE TO BE PROVIDED BY THE CONTRACTOR.

ALL DISPOSAL SITES MUST BE APPROVED BY THE KANSAS DEPARTMENT OF HEALTH AND ENVIRONMENT. MATERIAL EITHER STOCKPILED OR DISPOSED OF IN A FLOOD PLAIN WOULD REQUIRE A KANSAS STATE BOARD OF AGRICULTURE PERMIT. ANY MATERIAL DUMPED IN WATERS OF THE UNITED STATES OR WETLANDS IS SUBJECT TO U.S. CORPS OF ENGINEERS PERMITTING REGULATIONS. ANY MATERIAL BURIED OR STOCKPILED BEYOND APPROVED CONSTRUCTION LIMITS WOULD REQUIRE ADDITIONAL ARCHEOLOGICAL INVESTIGATIONS UNLESS BURIED IN A PREVIOUSLY APPROVED BORROW LOCATION.

CONTRACTOR SHALL PROVIDE A MINIMUM SEVENTY-TWO (72) HOUR ADVANCE NOTICE (EXCLUDING WEEKENDS AND HOLIDAYS) PRIOR TO BEGINNING ANY EXCAVATION, TO KANSAS ONE-CALL SYSTEM, A UTILITY LOCATION SERVICE, AT (316) 687-2470 TO REQUEST THE FOLLOWING UTILITY COMPANIES TO LOCATE ALL EXISTING LINES WITHIN THE PROJECT AREA: K.G.S. GAS, WESTAR ENERGY, SBC, COX COMMUNICATIONS, CITY OF WICHITA SEWER MAINTENANCE AND CITY OF WICHITA WATER DEPARTMENT.

THE CONTRACTOR SHALL BE RESPONSIBLE FOR PRESERVING PROPERTY IRONS. THE CONTRACTOR WILL BE REQUIRED TO RE-ESTABLISH ANY PROPERTY IRONS WHICH ARE DAMAGED OR DESTROYED BY HIS CONSTRUCTION OPERATIONS. SUCH IRONS SHALL BE RE-ESTABLISHED BY A LICENSED LAND SURVEYOR IN ACCORDANCE WITH STATE LAWS.

ALL AREAS DISTURBED DURING CONSTRUCTION SHALL BE SEEDED, FERTILIZED, AND MULCHED ACCORDING TO CITY OF WICHITA STANDARDS AND SPECIFICATIONS.

ALL CONSTRUCTION MATERIALS AND PROCEDURES SHALL BE IN ACCORDANCE WITH THE CITY OF WICHITA STANDARDS AND SPECIFICATIONS FOR STORM SEWER CONSTRUCTION.

ALL LAWN/TURF AREAS DISTURBED BY CONSTRUCTION OF THE PROPOSED IMPROVEMENTS SHALL BE SEEDED PER THE SPECIFICATIONS OR RESTORED WITH THE SAME GRASS/SOD AS EXISTING. RESTORATION OF DISTURBED AREAS SHALL INCLUDE, BUT NOT BE LIMITED TO, TOP SOIL PREPARATION, SEEDING, MULCH, AND/OR RESEEDING. ALL SEEDING/SODDING WORK SHALL BE IN ACCORDANCE WITH THE CITY OF WICHITA STANDARD SPECIFICATIONS AND THE CITY OF WICHITA ADMINISTRATIVE REGULATION NO. AR78 WHICH GOVERNS CLEANUP AND RESTORATION OR REPLACEMENT FOLLOWING CONSTRUCTION.

THE CONTRACTOR SHALL GIVE ALL PROPERTY OWNERS AND/OR TENANTS OF DEVELOPED PROPERTY ADJACENT TO THE CONSTRUCTION OF THIS PROJECT A MINIMUM OF TEN (10) DAYS ADVANCE NOTICE PRIOR TO START OF CONSTRUCTION.

THE WATER DEPARTMENT SHALL FIELD LOCATE WATER VALVES ONE TIME DURING CONSTRUCTION WHEN REQUESTED BY THE CONTRACTOR. IT SHALL BE THE CONTRACTOR'S RESPONSIBILITY TO PRESERVE SUCH FIELD LOCATIONS DURING THE CONSTRUCTION PROCESS. WATER VALVES, WATER VALVE BOXES OR FIRE HYDRANTS DAMAGED DURING CONSTRUCTION SHALL BE REPAIRED BY THE CONTRACTOR AT HIS OWN EXPENSE.

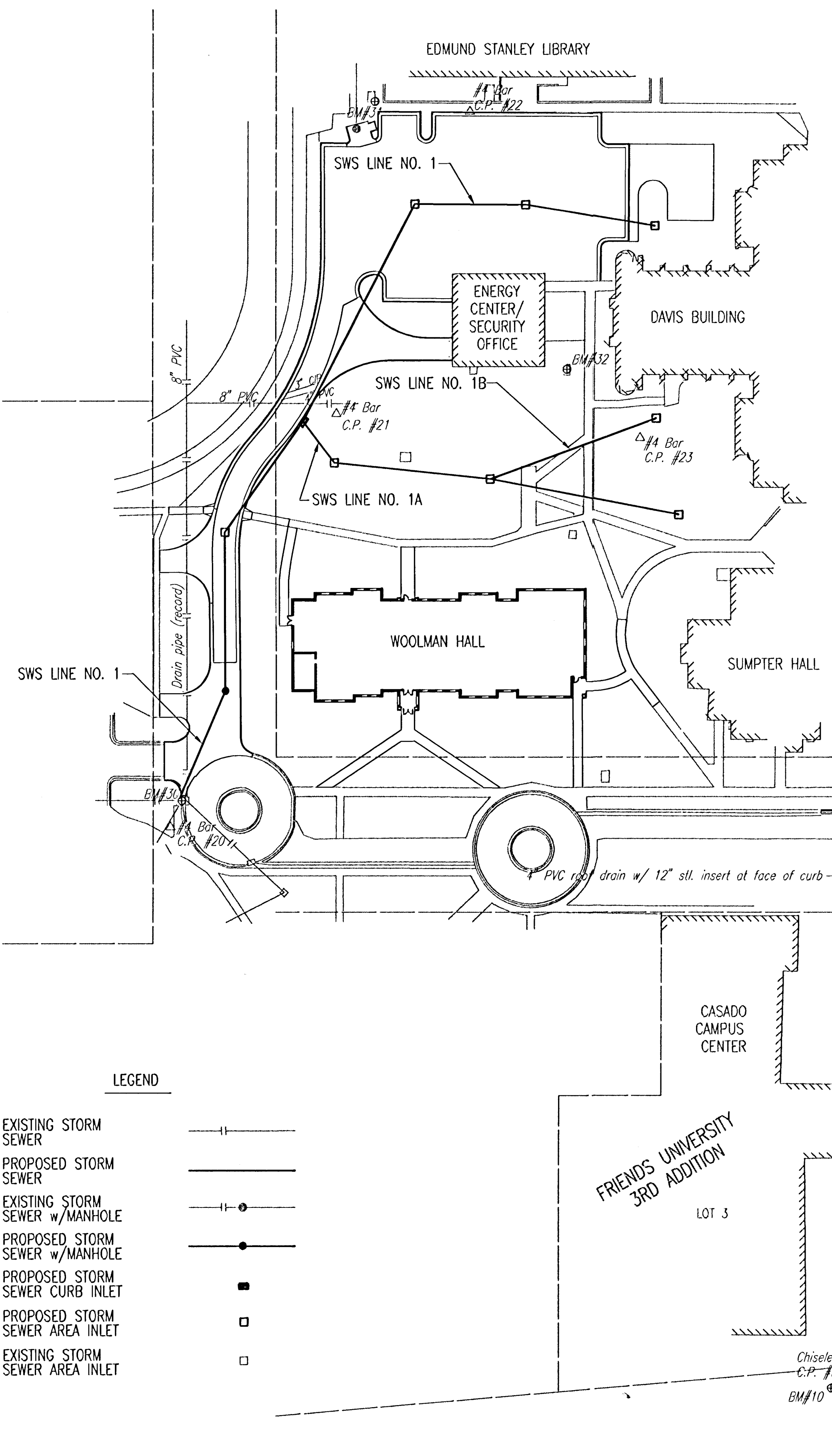
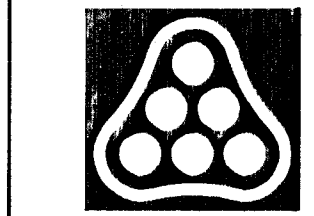
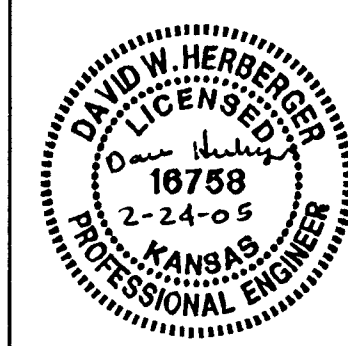
CUTS MADE IN PAVED SURFACES ON PUBLIC PROPERTY WILL BE REPAIRED BY THE CITY'S CONTRACTOR AND CHARGED AGAINST THE OWNER/APPLICANT. UNIT REPAIR PRICES ARE AVAILABLE FROM THE CITY AT 268-4418. A SURCHARGE MAY BE APPLICABLE. CALL 268-4418 FOR DETAILS. REPAIR COSTS TO BE PAID PRIOR TO RELEASE OF WATER SERVICE IF WATER SERVICE IS AFFECTED.

EXCESS EXCAVATED MATERIAL AND EXCESS TOPSOIL SHALL BE STOCKPILED OR WASTED WITHIN THE PLAT LIMITS. THE CONTRACTOR SHALL CONTACT THE OWNER'S ENGINEER AT 262-2691 FOR INFORMATION PERTAINING TO THE ACCEPTABLE LOCATIONS FOR THE DISPOSITION OF EXCESS MATERIAL. WASTE MATERIAL SHALL BE GRADED SMOOTH AND SLOPED TO DRAIN.

ALL MANHOLE AND INLET TOPS SHALL BE ADJUSTED TO MATCH FLUSH WITH FINAL GRADES.

AS BUILT 9/2005

No.	Revision	By	Date
CITY OF WICHITA, KANSAS JAMES L. ARMOUR, P.E. - ACTING CITY ENGINEER WOOLMAN HALL REPLACEMENT - FRIENDS UNIVERSITY <b>KEY MAP AND GENERAL NOTES</b> CITY OF WICHITA PRIVATE PROJECT NO. 1524 PPS (607861) <b>Professional Engineering Consultants, P.A.</b> 303 S. TOPEKA • WICHITA, KANSAS 67202 316-262-2691 • FAX 316-262-3003			
Designed by	DWH	Job No.	35-04549-0259
Drawn by	SAW	Date	February 2005
			Sh. 2 of 14



**LEGEND**

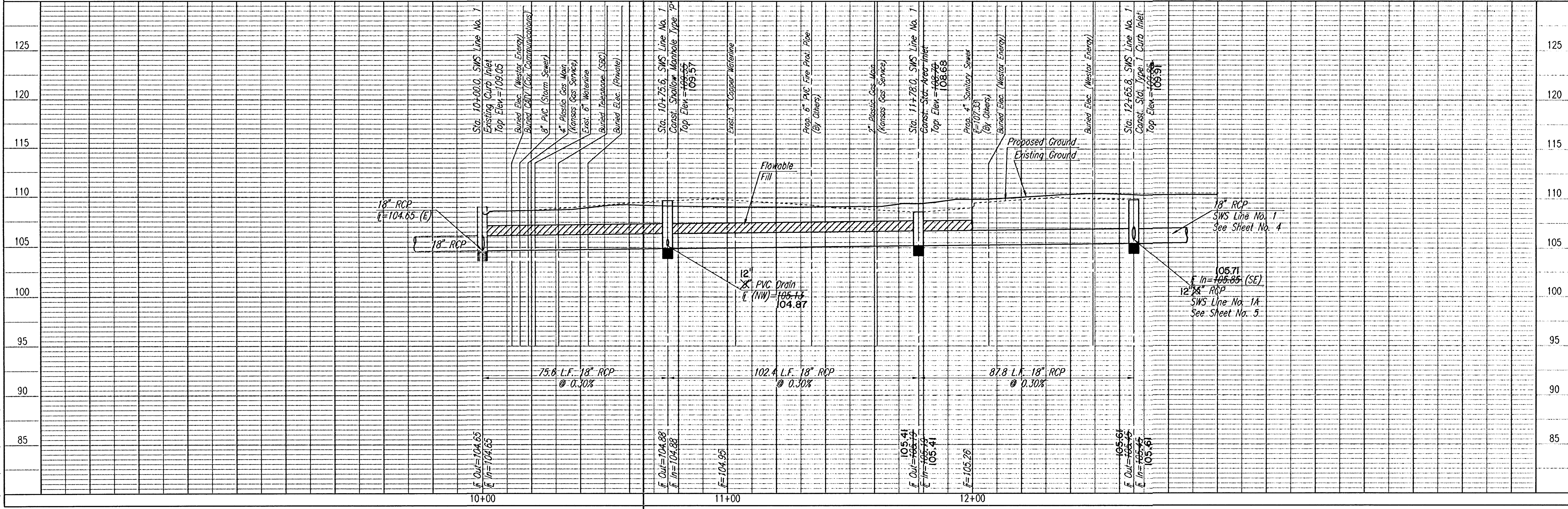
- EXISTING STORM SEWER
- PROPOSED STORM SEWER
- EXISTING STORM SEWER w/MANHOLE
- PROPOSED STORM SEWER w/MANHOLE
- PROPOSED STORM SEWER CURB INLET
- PROPOSED STORM SEWER AREA INLET
- EXISTING STORM SEWER AREA INLET

DSNR: DWH OPER: SAW SCALE: 1"=50.00  
 C:\2004\04-649\000\SWS\04-649-000-C-Key Map 02-24-2005 02:13:37 pm

PLAN	CHECKED	CHECKED
BY		
DATE		

PROFILE	CHECKED	CHECKED
BY		
DATE		

DSNR: DMH OPER. SAW SCALE: 1"=20.00  
 Q:\2004\04549\000\SWS\04549-000-C-SWSPP1 02-24-2005 02:14:11 pm



N-5,072.3772, E-4,496.0262  
 Sta. 10+00.0, SWS Line No. 1  
 Connect to Existing Curb Inlet\*  
 L=104.65  
 Install 75.6 L.F. 18" RCP(NNE)

N-5,142.4870, E-4,524.2049  
 Sta. 10+75.6, SWS Line No. 1  
 Const. Shallow Manhole Type 'P'  
 Dia. = 4'-0"  
 Top Elev.=109.55  
 Install 102.4 L.F. 18" RCP(N)  
 See Sheet No. 9

N-5,244.8637, E-4,524.2049  
 Sta. 11+78.0, SWS Line No. 1  
 Const. Std. Area Inlet  
 L=5'-0", W=4'-0"  
 Top Elev.=108.70  
 Install 87.8 L.F. 18" RCP(NE)  
 See Sheet No. 8

N-5,244.8637, E-4,524.2049  
 Sta. 12+65.8, SWS Line No. 1=  
 Sta. 20+00.0, SWS Line No. 1A  
 Const. Std. Type 1 Curb Inlet  
 L=6'-4", W=4'-4"  
 Top Elev.=109.85  
 Install 158.6 L.F. 18" RCP(NE)  
 Install 33.6 L.F. 15" RCP(SSE)  
 See Sheet No. 7

\*CUT OPENING IN WALL OF INLET, AND REMOVE FLOOR SHAPING AS NECESSARY. INSTALL NEW PIPE, CUT FLUSH WITH INLET WALL, AND GROUT IN PLACE WITH NON-SHRINK GROUT. INSTALL NEW FLOOR SHAPING. (THIS WORK SUBSIDIARY TO 18" RCP)

CAUTION !!!  
 Buried Elec. (Westar Energy)  
 Buried CATV (Cox Communications)

CAUTION !!!  
 8" PVC Storm Water Sewer (To Be Abandoned)

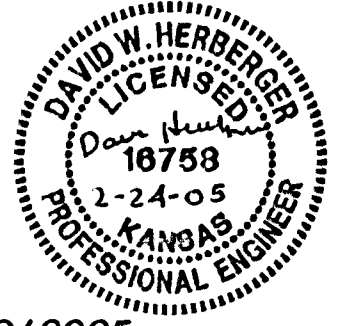
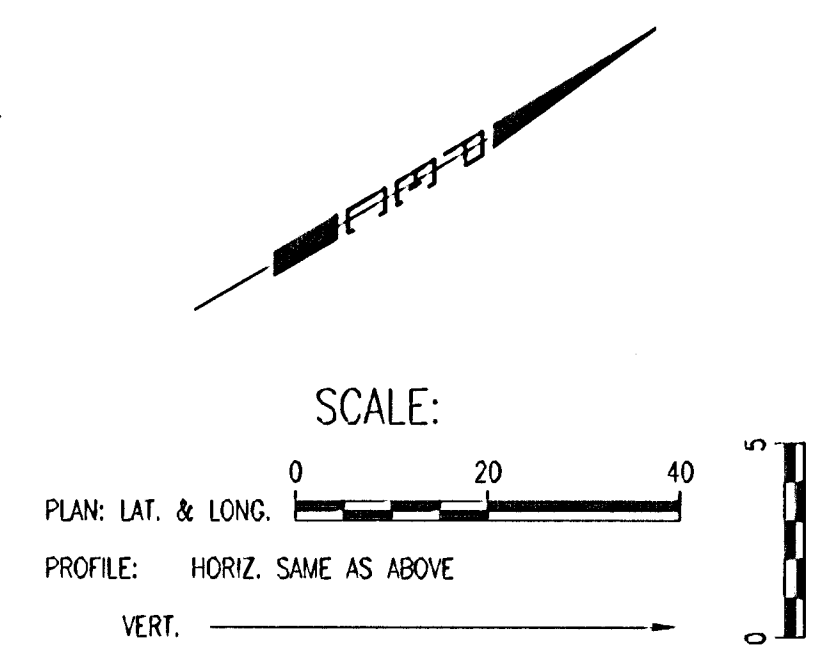
CAUTION !!!  
 Buried Electric (Private)  
 4" Plastic Gas Main (Kansas Gas Service)

CAUTION !!!  
 Existing 3" Copper Waterline

CAUTION !!!  
 2" Plastic Gas Main (Kansas Gas Service)

CAUTION !!!  
 Proposed 4" Sanitary Sewer (By Others)

CONTRACTOR SHALL EXPOSE ALL UTILITIES AT CROSSINGS AND REPORT FINDINGS TO THE ENGINEER. WORK SHALL BE ACCOMPLISHED PRIOR TO ORDERING ANY MATERIALS, PIPING, OR STRUCTURES.



Professional Engineering Consultants, P.A.  
 303 S. TORREBA - WICHITA, KANSAS 67202  
 316-262-2691 • FAX 316-262-3003

City of Wichita, Kansas  
 James L. Armour, P.E. - Acting City Engineer  
 Woolman Hall Replacement - Friends University  
 SWS LINE NO. 1  
 STA. 10+00.0 TO STA. 12+65.8  
 CITY OF WICHITA PRIVATE PROJECT NO. 1524 PPS (607961)

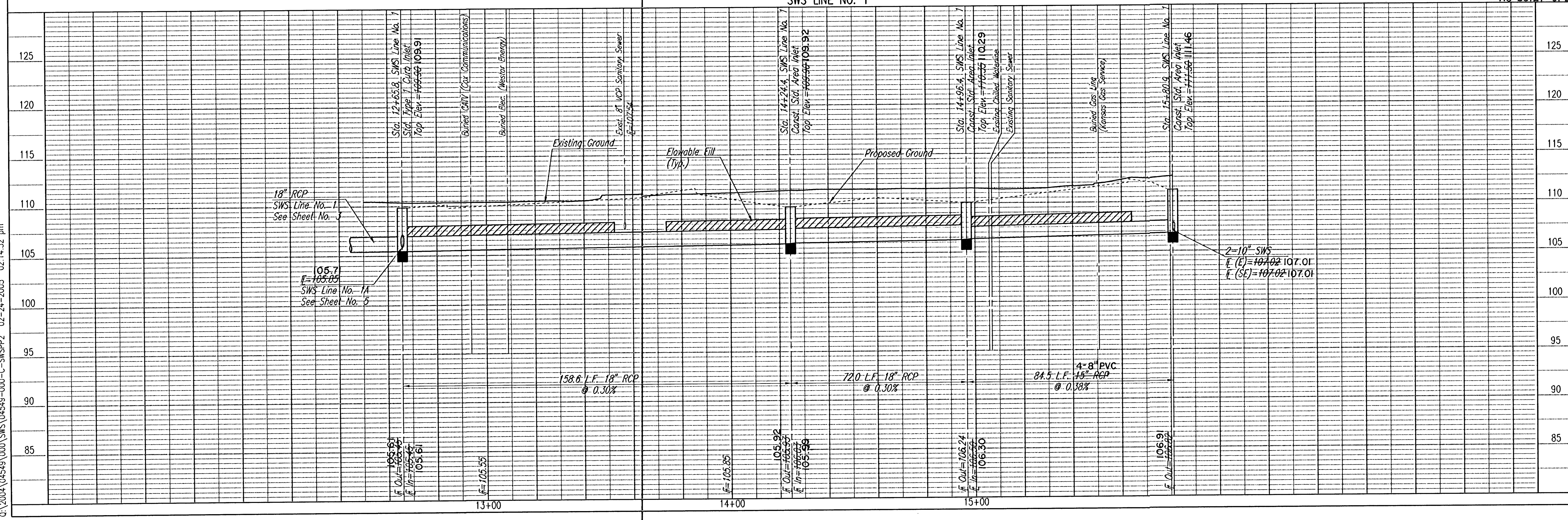
Designed By: DMH  
 Drawn By: SAW  
 Job No.: 35-04549-0259  
 Date: February 2005

Sheet 3 of 14

PLAN	CHECKED	CHECKED
BY		
DATE		

PROFILE	CHECKED	CHECKED
BY		
DATE		

DSNR: SAW OPER. SAW SCALE: 1"=20.00  
 C:\2004\04549\000\SAWS\04549-000-C-SNSP2 02-24-2005 02:14:52 pm

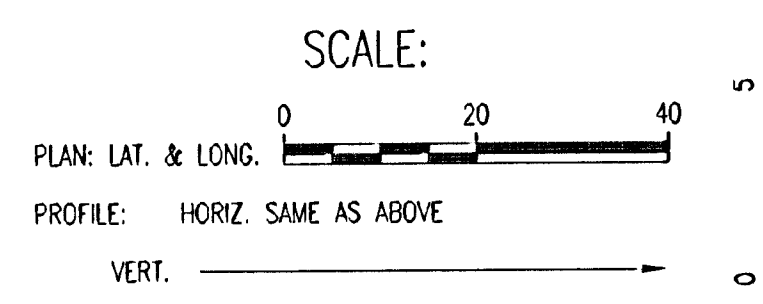


N-5,457.4767, E-4,647.6386  
 Sta. 14+24.4, SWS Line No. 1  
 Const. Std. Area Inlet  
 L=5'-0", W=3'-0"  
 Top Elev.=109.90  
 Install 72.0 L.F. 18" RCP (E)  
 See Sheet No. 8

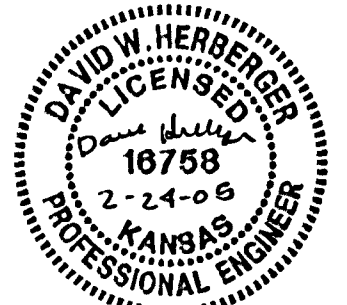
N-5,244.8637, E-4,524.2049  
 Sta. 12+65.8, SWS Line No. 1=  
 Sta. 20+00.0, SWS Line No. 1A  
 Std. Type 1 Curb Inlet  
 Top Elev.=109.85

N-5,457.1925, E-4,719.6380  
 Sta. 15+80.9, SWS Line No. 1  
 Const. Std. Area Inlet  
 L=5'-0", W=3'-0"  
 Top Elev.=111.50  
 See Sheet No. 8

N-5,457.1925, E-4,719.6380  
 Sta. 14+96.4, SWS Line No. 1  
 Const. Std. Area Inlet  
 L=5'-0", W=3'-0"  
 Top Elev.=110.35  
 Install 84.5 L.F. 15" RCP (SE)  
 See Sheet No. 8



CONTRACTOR SHALL EXPOSE ALL UTILITIES AT CROSSINGS AND REPORT FINDINGS TO THE ENGINEER. WORK SHALL BE ACCOMPLISHED PRIOR TO ORDERING ANY MATERIALS, PIPING, OR STRUCTURES.



AS BUILT 9/2005

Professional Engineering Consultants, P.A.  
 303 S. TORBEN • WICHITA, KANSAS 67202  
 316-262-2891 • FAX 316-262-3003

City of Wichita, Kansas  
 James L. Armour, P.E. - Acting City Engineer  
 Woolman Hall Replacement - Friends University  
 SWS LINE NO. 1  
 STA. 12+65.8 TO STA. 15+80.9  
 CITY OF WICHITA PRIVATE PROJECT NO. 1524 BPS (607861)

Designed By: DWH  
 Job No.: 35-04549-0259  
 Date: February 2005

Drawn By: SAW

Sheet 4 of 14

N-5,244.8637, E-4,524.2049  
Sta. 12+65.8, SWS Line No. 1=  
Sta. 20+00.0, SWS Line No. 1A  
Std. Type 1 Curb Inlet  
Top Elev.=109.85

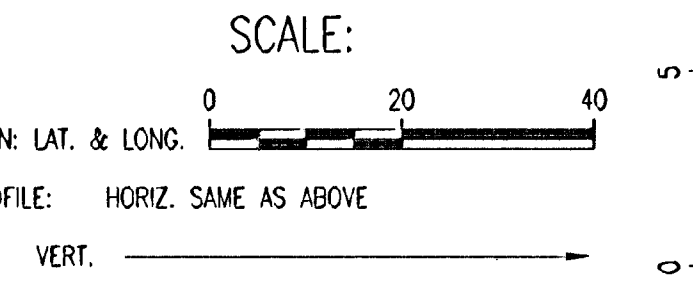
N-5,289.8112, E-4,595.2684  
Sta. 20+33.6, SWS Line No. 1A  
Const. Std. Area Inlet  
L=5'-0", W=4'-0"  
Top Elev.=108.50  
Install 102.0 L.F. 15" RCP(E)  
See Sheet No. 8

N-5,279.2565, E-4,696.7209  
Sta. 21+35.6, SWS Line No. 1A=  
Sta. 30+00.0, SWS Line No. 1B  
Const. Std. Area Inlet  
L=6'-0", W=3'-0"  
Top Elev.=108.70  
Install 124.0 L.F. 15" RCP(SE)  
Install 114.2 L.F. 15" RCP(NE)  
See Sheet No. 8

Remove and Replace  
15 L.F. Concrete Walk

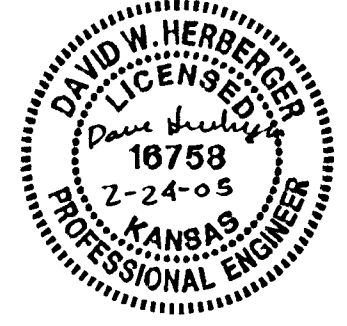
N-5,256.3040, E-4,818.5781  
Sta. 22+59.6, SWS Line No. 1A  
Const. Std. Area Inlet  
L=5'-0", W=3'-0"  
Top Elev.=110.00  
See Sheet No. 8

N-5,279.2565, E-4,696.7209  
Sta. 30+00.0, SWS Line No. 1B=  
Sta. 21+35.6, SWS Line No. 1A  
Std. Area Inlet  
Top Elev.=108.70



Remove and Replace  
20 L.F. Concrete Walk

N-5,318.5989, E-4,803.9251  
Sta. 31+14.2, SWS Line No. 1B  
Const. Std. Area Inlet  
L=5'-0", W=3'-0"  
Top Elev.=111.65  
See Sheet No. 8



CAUTION!!!  
Buried Telephone (SBC)  
Buried CATV (Cox Communications)

CAUTION!!!  
Buried Telephone (SBC)  
Buried 2" Gas Line (KGS)

Existing Building to  
be Demolished  
By Others.

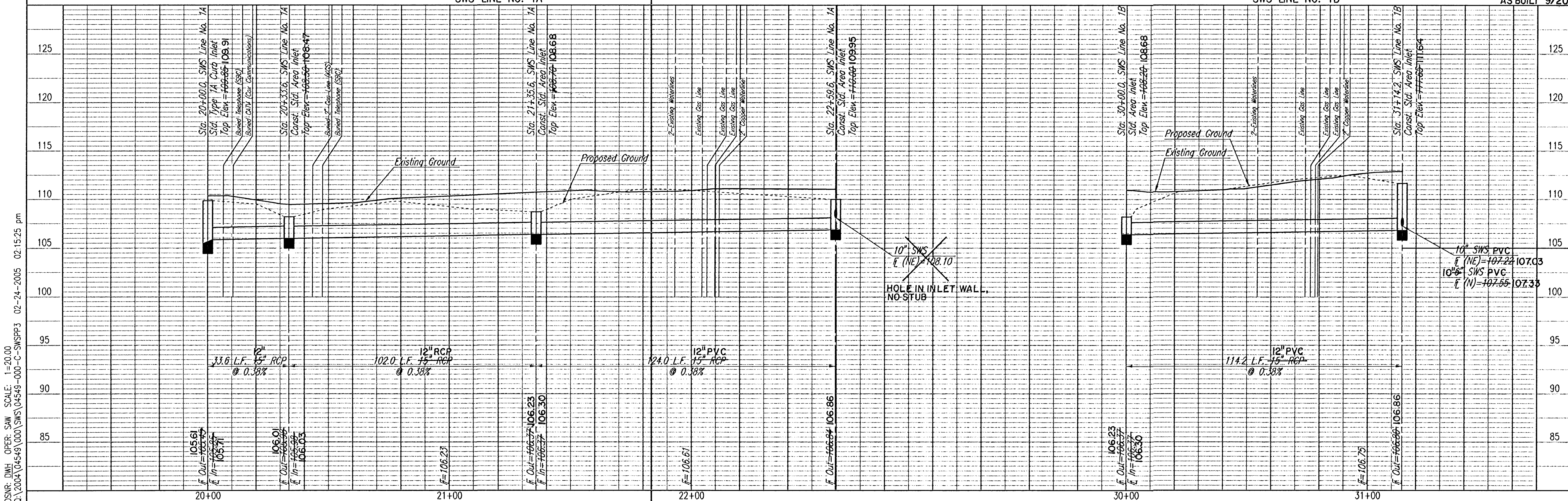
CAUTION!!!  
2" Copper Waterline  
3-Existing Gas Lines  
2-Existing Waterlines

CONTRACTOR SHALL EXPOSE ALL UTILITIES AT CROSSINGS  
AND REPORT FINDINGS TO THE ENGINEER. WORK SHALL  
BE ACCOMPLISHED PRIOR TO ORDERING ANY MATERIALS,  
PIPING, OR STRUCTURES.

CAUTION!!!  
2" Copper Waterline  
3-Existing Gas Lines  
2-Existing Waterlines

PLAN	CHECKED	DATE

PROFILE	CHECKED	DATE



DSNR: DMH OPER: SAW SCALE: 1"=20.00  
C:\2004\04-549\000\SWS\04549-000-C-SWSPP3 02-24-2005 02:15:25 pm

CITY OF WICHITA, KANSAS  
JAMES L. ARMOUR, P.E. - ACTING CITY ENGINEER  
WOOLMAN HALL REPLACEMENT - FRIENDS UNIVERSITY  
SWS LINE NO. 1A &  
SWS LINE NO. 1B

Professional Engineering Consultants, P.A.  
303 S. TORRECA, WICHITA, KANSAS 67202  
316-262-2691 • FAX 316-262-3003

Designed By: DMH Date: February 2005  
Drawn By: SAW

Sheet 5 of 14

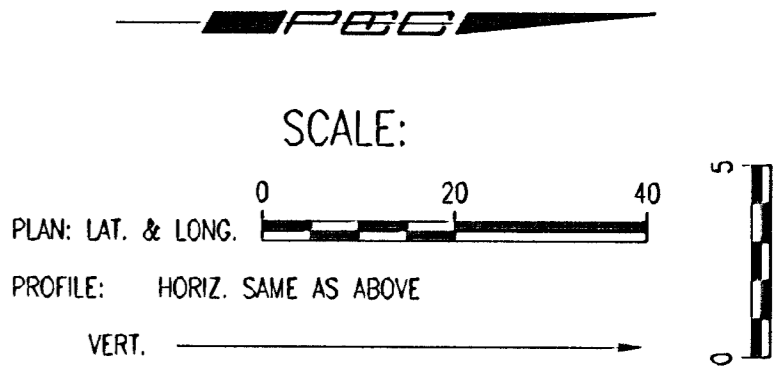
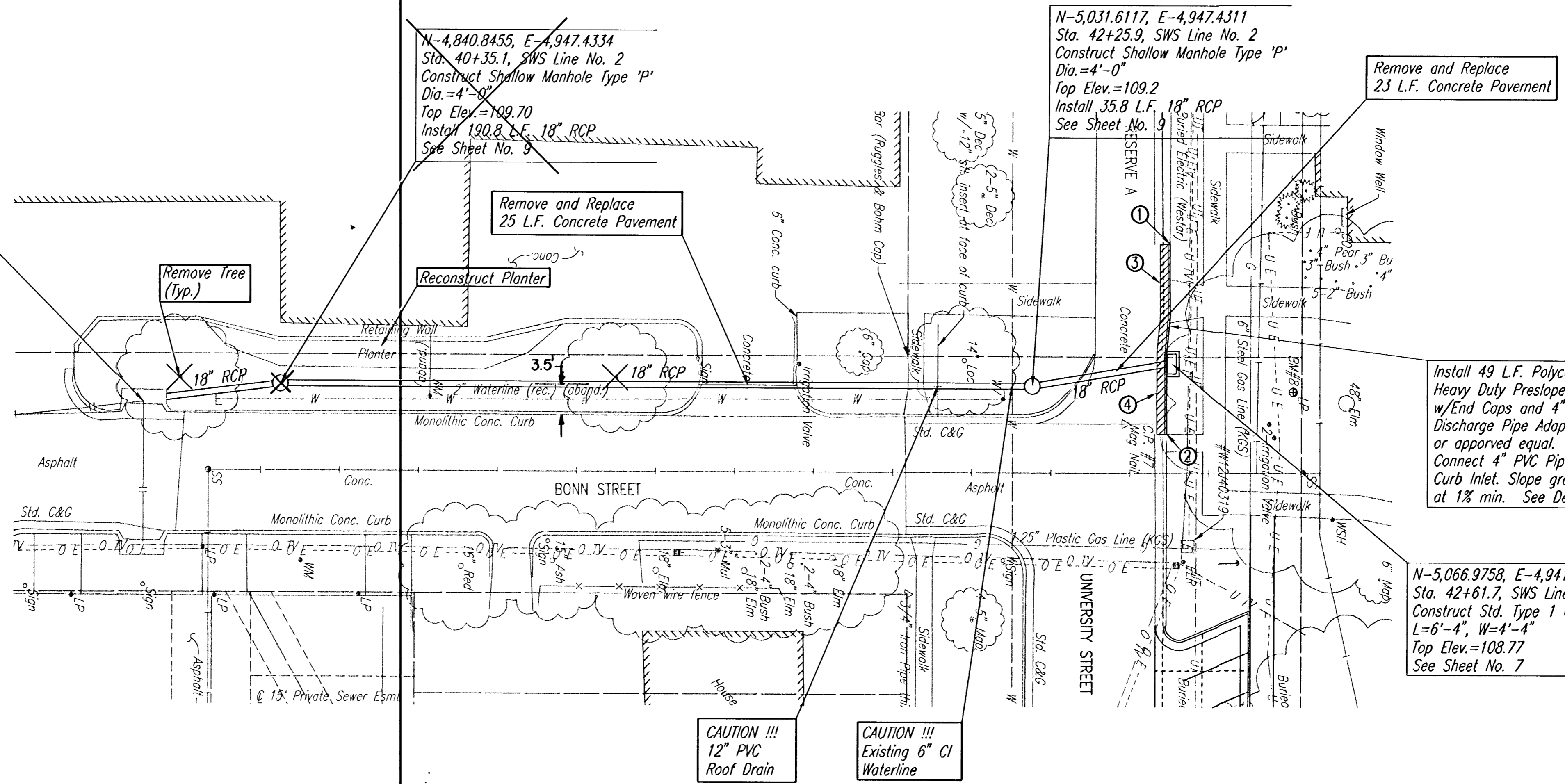
DATE: \_\_\_\_\_ BY: \_\_\_\_\_  
 CHECKED: \_\_\_\_\_  
 PLAN

DATE: \_\_\_\_\_ BY: \_\_\_\_\_  
 CHECKED: \_\_\_\_\_  
 PROFILE

DSNR: DMH OPER. SAW SCALE: 1"=20.00  
 Q:\2004\04549\000\SWS\04549-000-C-SWSPP4 02-24-2005 02:15:58 pm

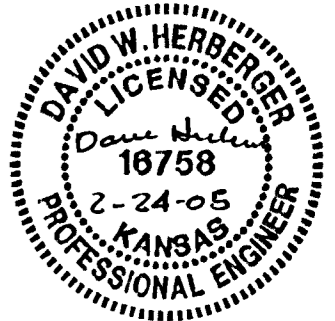
- ① N-5,066.4493, E-4,911.1990  
Limits of Presloped System,  
Install End Cap.
- ② N-5,065.6503, E-4,959.4707  
Limits of Presloped System,  
Install End Cap.
- ③ Remove and reconstruct roll type  
curb w/presloped system.  
Match curb type "inkind".
- ④ Remove and reconstruct standard  
curb and gutter w/presloped system.  
Match curb type "inkind".

\*CUT OPENING IN WALL OF INLET, AND REMOVE FLOOR  
 SHAPING AS NECESSARY. INSTALL NEW PIPE, CUT  
 FLUSH WITH INLET WALL, AND GROUT IN PLACE WITH  
 NON-SHRINK GROUT. INSTALL NEW FLOOR SHAPING.  
 (THIS WORK SUBSIDIARY TO 18" RCP)



Install 49 L.F. Polycast 600 Series  
 Heavy Duty Presloped System  
 w/End Caps and 4" Bottom  
 Discharge Pipe Adaptor  
 or approved equal.  
 Connect 4" PVC Pipe to  
 Curb Inlet. Slope grades  
 at 1% min. See Detail Sheet 8.

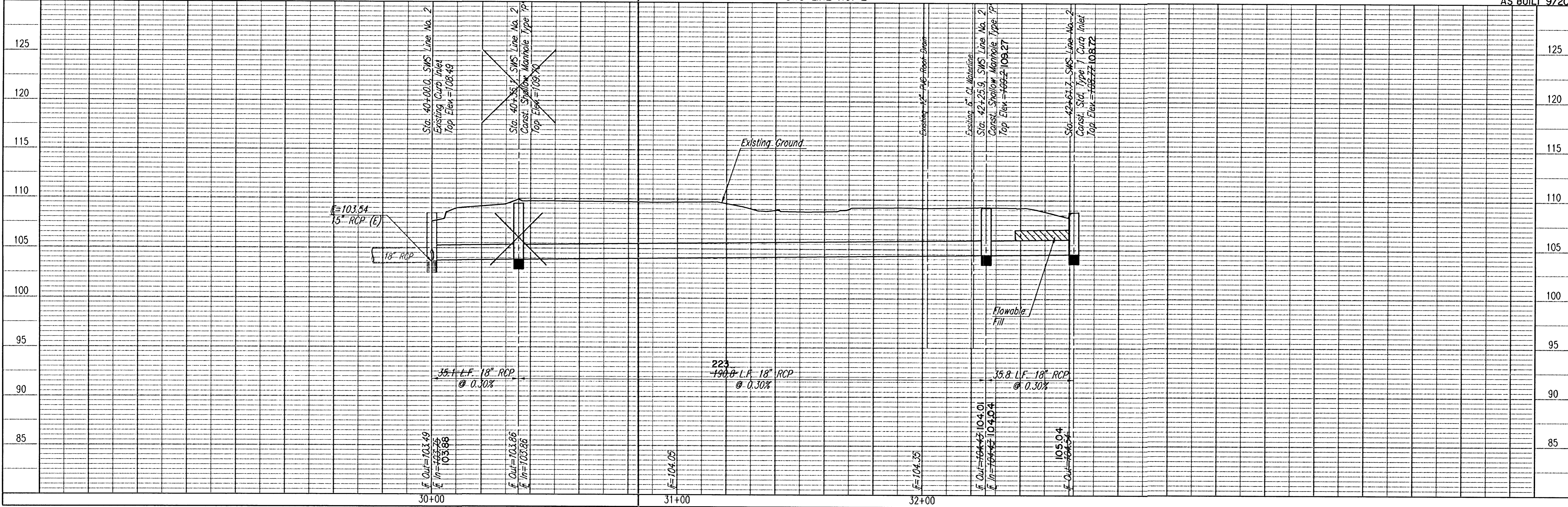
N-5,066.9758, E-4,941.6396  
 Sta. 42+61.7, SWS Line No. 2  
 Construct Std. Type 1 Curb Inlet  
 L=6'-4", W=4'-4"  
 Top Elev.=108.77  
 See Sheet No. 7



CONTACTOR SHALL EXPOSE ALL UTILITIES AT CROSSINGS  
 AND REPORT FINDINGS TO THE ENGINEER. WORK SHALL  
 BE ACCOMPLISHED PRIOR TO ORDERING ANY MATERIALS,  
 PIPING, OR STRUCTURES.

SWS LINE NO. 2

'AS BUILT 9/2005



Professional Engineering Consultants, P.A.  
 308 S. TORREKA • WICHITA, KANSAS 67202  
 316-262-2691 • FAX 316-262-3003

City of Wichita, Kansas  
 James L. Armour, P.E., Acting City Engineer  
 Woolman Hall Replacement - Friends University  
 SWS LINE NO. 2

City of Wichita, Private Project No. 1524 PPS (6/7/96)

Designed By: DMH Job No. 35-04549-0259 Date: February 2005  
 Drawn By: SAW

Sheet 6 of 14